

## Women's Leadership Center

Annual Report 2006 - 2007

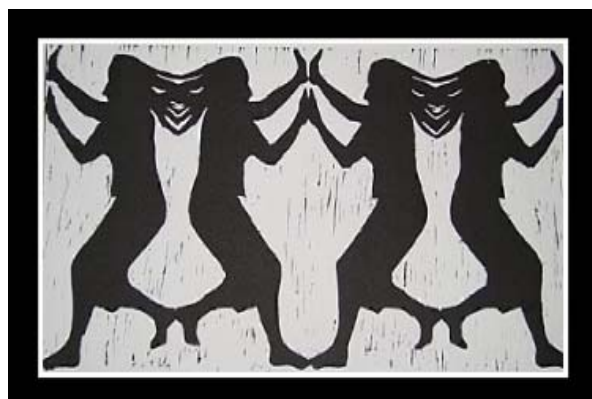


Image by Catherine Aiello, School of Art and Design '08

### Providing Key Leadership Elements for Women

- Skill-building in a female-friendly environment
- A theoretical base for understanding gender and leadership issues
- Access to women mentors and role models
- Opportunities for real world application of talents

## A Message from the Director

Greetings,

*This past year we inaugurated several important new programs at the Women's Leadership Center. Our Women's Leadership Academy brings to life our goal of offering a signature leadership program for women at AU. Members of the inaugural class networked with Senators and CEOs, learned about leadership theory, and will soon embark on their ambitious capstone projects (see page 9 for more about the Academy).*

*During this summer's Women Leaders of Tomorrow Summer Institute for high school girls, our participants learned essential leadership skills and then conducted leadership workshops for their younger peers. It was a joy to see these dynamic young women and girls learn and laugh together, and lead each other to a greater understanding of their individual and collective potential (see page 11 for more about the Institute).*

*Susan Rogers' memorable speech during Reunion 2007 (see page 5 for details) has inspired us to plan a Women's Leadership Conference during Reunion 2008. Alumnae - we would like your feedback about this idea. Please complete a short survey at <http://www.alfred.edu/alumni/>, "Express Your Interest."*

*As we look ahead to the 2007-2008 school year, I find that our focus at the WLC must necessarily shift from creating new programs to bringing depth and understanding to what we have done so far. Fostering meaningful campus dialogue on questions such as - "Why do we need a Women's Leadership Center?" and "What does feminism have to do with the WLC or with me?" will be priorities for this year.*

*We've heard a great deal about the so-called "boy's crisis" recently. Certainly our young men have needs and concerns that are uniquely their own. But that should not detract from the fact that women - regardless of the accolades they may receive in college - frequently earn fewer accolades in the form of raises and promotions in their post-graduate years. It takes persistence and commitment to ensure that society appropriately recognizes and rewards women for their accomplishments. I am proud that the WLC provides a venue where young women can discover and value their own potential, so that others will as well.*

*I welcome your input and participation as we move into year three of the WLC!*

Warmest Regards,

Amy Jacobson  
Director of the Women's Leadership Center

## Our Mission

Building on Alfred University's heritage as the first truly co-educational institution in the nation, the Women's Leadership Center offers women the opportunity to explore and fulfill their leadership potential personally, professionally, and in their communities.

## Advisory Board

The Women's Leadership Center Advisory Board performs in an advisory capacity to the Director of the AU Women's Leadership Center.

### AU Alumni

Pamela Bernstein '71  
Teri Knopf Pullara '88  
Jessica Gottlieb '98  
Suzanne Harwood '69  
Elizabeth Judson '82  
Amy Karle '02  
Christine Kulp '71  
Victoria Meyer '81  
Christa Nyman Christakis '01  
Patricia Riley '65  
Sherry C. Walton '80

*"In just two short years, the Women's Leadership Center has positively impacted women students across campus in so many ways. The WLC has become part of what makes Alfred University unique. It's a pleasure to serve on the WLC Advisory Board side-by-side with the smart, creative and diverse group of people who work hard to make the WLC effective."*



Kathy Woughter  
VP for Student Affairs  
Alfred University  
WLC Advisory Board

### AU Faculty / Staff

Sylvia Bryant  
Laura Greyson  
Mark McFadden '99  
Kathy Woughter '93

## Become Involved

Find out how you can become a part of the WLC community. For more information please contact Amy Jacobson, Director of the WLC, at 607.871.2971 or [wlc@alfred.edu](mailto:wlc@alfred.edu).

## Women of Influence Speakers

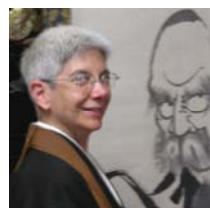
This program continues to bring powerful female role models to campus, providing inspiration and guidance to our current students through lectures and small group discussions.

Jessica Gottlieb '98  
Attorney  
Hoffman-La Roche, Inc., New Jersey  
*"Creating Your Own Path to Success"*



Ms. Gottlieb shared her experience of finding a challenging and rewarding profession, connecting with a network of supportive women professionals, and choosing a work environment that suits her personality and lifestyle.

Roko Sherry Chayat  
Dharma Teacher  
Zen Center of Syracuse, New York  
*"Women of the Way: Women of Buddhism, Yesterday and Today"*



Roko Chayat provided insight into the meaning of success and leadership, drawing on examples of inspiring women throughout history who - despite the odds - created their own path to spiritual fulfillment.

Dr. Peggy J. Wozniak '72  
Superintendent  
Binghamton City Schools  
*"We're Not Done Yet - The Continuing Development of Women as Leaders"*



Dr. Wozniak provided advice about how women can and should take advantage of the many opportunities available to them, but also described the changes that society still needs to make in accepting women as leaders.

## Women of Influence Speakers, continued



New York State Senator  
Catharine M. Young  
*"Reflections on Leadership"*

Senator Catharine Young of New York's 57th Senate District reflected on her path to public service and the mentors who inspired her, and urged students to pursue leadership through service to others.



Enid Borden '72  
President and CEO,  
Meals On Wheels Association of America  
*"How I Will End Hunger in My Lifetime"*

Ms. Borden shared her vision for ending hunger in her lifetime. She encouraged students to find their passion and to see themselves as effective agents for change.



Susan M. Rogers '77  
Executive Vice President  
WXXI Public Broadcasting Council  
Rochester, New York  
*"Change and Thrive"*

Through personal experiences and the stories of others, Ms. Rogers shared her insights about women's ability to adapt to change without losing sight of the things they cherish most.

### Literary Guest's Talk and Reading:



Diana Abu-Jaber, author of *Arabian Jazz* and *Language of Baklava*, read from her new novel *Origin*. She also provided endearing personal anecdotes illustrating how hard it can be for women to recognize and promote our own talents. This was a collaborative event with the Writing Center, NEH, and English Division.

## Skill-Building Workshops

These workshops provide effective training while encouraging personal and professional growth.

*"Tough Guise"* - A video about masculinity featuring Jackson Katz, directed by Sut Jhally

What does it mean to be masculine in today's society? This thought-provoking video was followed by a discussion led by Dr. Norm Pollard, Dean of Students.



### Women's Restorative Retreat

Participants learned the restorative powers of silence, and techniques to improve self-esteem. Roko Sherry Chayat, a master of Zen meditation, was the guide for this amazing retreat.

### Women's Money Workshop I: "The Liberating Power of Money"

Geralyn Gough, a professional financial planner, showed participants how to minimize debt, maximize savings, and invest wisely.



### Women's Money Workshop II: "Grant Writing"

Participants learned the powerful skill of grant writing, critical for success in any field. Taught by AU's own Dr. Sylvia Bryant, Interim Vice President of University Relations.

## Skill-Building Workshops, continued

### Good Sense Gourmet "Focus on Fad Diets"

The WLC and AU Dining Services collaborated with Health and Wellness Educator Pam Schu and Biology Professor Kathryn Kohel for our 2nd annual Good Sense Gourmet. AU students enjoyed a delicious and nutritious meal in an elegant setting, learned about the pitfalls of fad diets, and took away quick tips for healthy eating.



### Public Speaking Workshop "Say What?"

AU Communications Professor Dr. Pamela Schultz taught students how to present with confidence and personality, how to avoid presentation pitfalls, and how to use technology as an asset rather than a crutch.

### Self-Defense Workshop "Practical Self-Defense"

Sensei Elise Flynn, together with a team of instructors (including Police Officer Walt Mackney) presented the basic elements of self-defense for women. After instruction, the students practiced their techniques on the padded "Red Man" (Professor Scott Mixture).



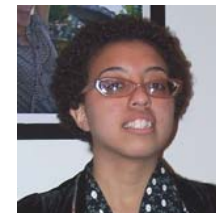
### Stress-Buster Study Night

Chase Angier, Assistant Professor of Dance, showed students how to restore energy and reduce stress through gentle meditative positions, imagery exercises, and constructive rest. A perfect event leading into finals week.

## Student Leadership Opportunities

### Internships

We had seven interns at the WLC during the 06-07 school year. Internships included three Publicity Interns, two Art Curator Interns (*Right: Tiffany Butler, School of Art and Design '10*), one Communications Studies Intern, and one Graduate Assistant who analyzed the results of the "Finding the Line" survey.



### Women's Excellence in Leadership Award

The WLC is proud to announce that Jessica Webster, a senior in the College of Business, was selected as the winner of the second annual Women's Excellence in Leadership Award. We also congratulate Erin Collins of the School of Engineering and Sarah Hall Weaver of the College of Liberal Arts and Sciences who received Honorable Mention. *The WELA is made possible by Teri Knopf Pullara '88.*



### WLC Student Newsletter

Our intern of two years, Grace Stewart (*School of Art and Design '08*), wrote and produced the new WLC newsletter. The newsletter profiles international, national, and regional women leaders. It also features *The College Girl*, a comic strip by Meagan O'Brien (*School of Art and Design '08*) which highlights issues of importance to today's college women.



"Since working at the WLC I feel more confident in my abilities and opinions and I feel more focused on what I care about and enjoy."

~Grace, WLC Intern



## Women's Leadership Academy



The *Women's Leadership Academy* launched with ten amazing students in the inaugural class! Last spring these students participated in a *Gender and Leadership* seminar featuring faculty, staff, alumni, and community leaders as guest lecturers who addressed subjects such as "The Psychology of Women's Leadership," "Leading Through Language" and "The Pay Gap." Through journaling, students engaged in insightful reflections, demonstrating a growing understanding of gender and leadership issues generally, as well as their own leadership strengths and needs. In the fall of 2007, Academy students will embark on their capstone projects, and we will welcome the next class of eighteen Academy members.

"Sometimes women feel it is necessary to take the male approach to gain respect, while men can feel comfortable in whatever role they choose."

~Academy member's reflection.

## Finding the Line

*Finding the Line*, the WLC's survey project about campus sexual harassment, and funded by the American Association of University Women (AAUW), went on tour in 2006-2007. Students Grace Stewart (*School of Art and Design '08*) and Stephanie Fukes (*Graduate Student in the Counseling Program '08*), together with Professor Karen Porter and Amy Jacobson presented the survey findings at a regional AAUW conference at the Susan B. Anthony House in Rochester, NY, and at a statewide AAUW conference in Saratoga Springs, NY. They also participated in ongoing campus efforts aimed at preventing and redressing incidents of sexual harassment.



Dr. Karen Porter and Stephanie Fukes



"Working with the survey results and participating in the AAUW conferences were wonderful and invaluable experiences...not to mention great fun."

~Stephanie Fukes, WLC Graduate Assistant

## Networking & Mentoring

Networking and mentoring are often cited as key to women's success. The WLC provides several programs where AU students can both be and have mentors.

\*[MentorNet](#) provides professional mentors for AU students in the fields of math, science, and engineering. This service is made possible through a joint effort of the WLC and the School of Engineering.

\*The Career Development Center and WLC offer an [Alumni Network](#) that pairs AU students with alumni in their field of interest.

\*Through the WLC's [High School Mentoring Project](#), ten AU women student mentors were matched with ten Wellsville High School students. Mentors and protégées attended skill-building workshops and cultural events, and corresponded by email about topics such as study tips, college applications, and the challenge of juggling school, family and friends.

## Women Leaders of Tomorrow Summer Institute

Our first foray into summer programming for high school students was a great success! Fourteen young women participated in a five-day program focused on building skills and boosting self-esteem. Several days into the session, our high school participants used their new skills to design and teach leadership workshops for local Girl Scouts. They were excellent role models for their younger peers, and felt empowered by taking on a leadership role. Everyone went home with new friends and great memories.



*Institute Students with Co-Director Mark McFadden*

## Women's Leadership Center

Alfred University  
1 Saxon Drive  
Alfred, NY 14802

Phone: 607.871.2971  
Web: [www.alfred.edu/wlc](http://www.alfred.edu/wlc)  
E-mail: [wlc@alfred.edu](mailto:wlc@alfred.edu)