

ALFRED
UNIVERSITY
HANDBOOK

1938 - 1939

Presented by the

Christian Associations
of Alfred University

to the

Members of the Class of 1942

INDEX

	Page
Administration Rules	
Assembly	18
Athletics	24
Attendance	21
Examinations	20
For Registering—Liberal Arts	17
For Registering—College of Ceramics	18
For Student Conduct	25
Library Regulations	23
Special Rules	24
Standings	19
Athletic Schedules	74
Clubs and Honorary Societies	95
College Calendar	114
Colors	121
Faculty	106
Freshman Court	28
Freshman Rules	27
Fraternities and Sororities	70
Greetings from the President	5
Greetings from the Christian Associations	6
Intersorority Council Constitution ..	89
Independent Group	93
Interfraternity Council	
Constitution	80
Rushing	87
Merit System	43
Men's Athletics	59
Eligibility	60
Constitution	62

INDEX

	Page
Music	105
Recitation Schedules	124
Religious Life	31
Church Services	33-34
Rules for Student Conduct	
At Examinations	25
Cheating	25
Infirmary Regulations	25
Songs	115
Story of Alfred University	11
Student Government	
Senate	35
Constitution	35
Student Christian Movement	7
Y.W.C.A.	8
A.U.C.A.	9
Student Life Committee	51
Student Publications	104
Track Records	76
University Forum	103
Women's Athletics	
Constitution	71
Women's Student Government	
Constitution	48
Regulations	51
Closing Hours	53
Yells	121

TO THE CLASS OF 1942

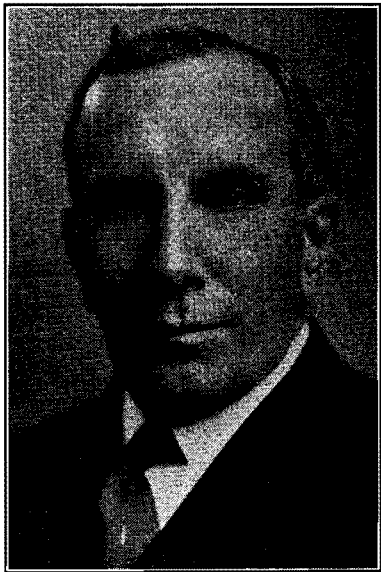
Welcome :

It is, indeed, a pleasant task as the years roll by to welcome new classes to Alfred University. Your high school days are over and you are undertaking the adventure of college. I am glad that you have chosen Alfred as your school. I hope that you will like us and that Alfred will like you. In other words, I hope that you are the type of persons which this school can successfully lead in the attainment of real education.

I hope that you will have an enjoyable time here. Most students do. A touch of homesickness occasionally bothers one during these first weeks, but it is a disease never fatal and requiring the attention of no graduate of a medical college. I hope that the social life, the sports, the dramatics, the journalistic opportunities and other extra-classroom activities will claim their proper share of your time and interest. They are a real part of a well-rounded education.

I hope that you are getting into the right courses. If you are planning on engineering, art, teaching, business, social work, medicine, dentistry, law, or what-not, I hope you are fairly sure you are after what you really want. Now is the time to expend gray-matter on that issue. I welcome you to a lot of hard study and real intellectual growth.

I hope you will find many congenial spirits, and a very small circle of cronies. These cronies should be a very select



J. Nelson Norwood, M.A., Ph.D., President

group. They will largely determine certain types of your growth in college. If possible have a few who are a notch above you in standards and ideals. Remember that these friendships will in some cases last a lifetime. One of these friends may become your wife (or husband).

I hope you will plan to grow in right directions. You will grow, that is inevitable; that you cannot control. But how and toward what you grow is partly your business. I welcome you to the opportunity to grow into bigger and more worthwhile men and women. After all, whatever profession we may be studying to fill, we will have another supremely important job on our hands. We must not only know our business and acquire our needed skills to do something in life, but we must grow to be somebody. I welcome you to that task in this fine, old institution.

J. NELSON NORWOOD, President

GREETINGS

To the Class of 1942:

The Christian Associations of Alfred heartily welcome you to the activities on the Campus. They urge you to take an active part in the life of the University and to enter into the spirit and traditions which are characteristic of its growth and progress.

Especially do they invite you to share in the work of the Christian Associations, and, by so doing, make them a dynamic force for good, influencing the entire life on the Campus.

Mildred E. Wesp, Pres. Y.W.C.A.
Alfred G. Dyer, Pres. A.U.C.A.

THE STUDENT CHRISTIAN MOVEMENT

Three years ago, the college Y.M.C.A. and Y.W.C.A. groups on various campuses throughout the United States, joined forces with the various church groups, and from their united efforts evolved the Student Christian Movement. In New York State this movement incorporates in its fellowship the students of all the colleges and normal schools. It is democratically directed by a council of representatives elected by the member college organizations and members-at-large who represent the church bodies. Young Men's and Young Women's Christian Associations and college departments of religion. The Movement maintains a staff of traveling secretaries whose services are available to all the colleges.

On the Alfred Campus are two such organizations: The Young Women's Christian Association, and the Alfred University Christian Association (the men's group).

The Y.W.C.A. was organized forty-five years ago and stated as its purpose "to unite in the desire to realize a full and creative life through a growing knowledge of God". This still remains the purpose of the organization although the activities and interests of the group have changed constantly through the years.

Meetings are held each Sunday evening during the college year at which various individuals from faculty, student body and outside are invited to speak. Discussion groups have been sponsored and musicales

held for the entire campus. They have been responsible through the years for many innovations to improve the relationships of the women on the campus, having successfully carried on the "Big and Little Sister" plan which more recently was taken over by the Women's Student Government. Likewise, each year this group sends representatives to intercollegiate conferences sponsored by the Student Christian Movement in N. Y. State. They have been regularly represented at the Silver Bay Conference, held in June of each year.

1938-39 Officers

Y.W.C.A.

President—Mildred Wesp
Vice-President—Miriam Howd
Secretary—Rebecca Vail
Treasurer—Nancilu Butler

The A.U.C.A. had a long and honorable history of nearly half a century as the Y. M.C.A., changing its name to A.U.C.A. in 1930. Like most college organizations it has had both bright and dull years of life on the Alfred campus, depending very largely upon its student leadership. It once incorporated in its membership all men in the college but in more recent years has elected to its membership those men who were interested in giving a major portion of their time to this extra-curricular activity.

The group meets twice a month and several times unites with the Y.W.C.A. in joint meetings on Sunday evening. With the development of the Student Christian Movement there is a growing tendency to make the projects of the two organizations co-operative and hence co-educational.

The A.U.C.A. has for its purpose to deepen the spiritual life of the campus and achieves this through co-operation in the various religious activities, such as the University Church, Chapel and the promotion of discussion groups.

Like the Y.W.C.A. it also sends representatives to various intercollegiate conferences including Silver Bay. It has sponsored the establishment of the Blue Key, aided in the reorganization of the Interfraternity Council, thus promoting better relationships between the men's groups, and recently sponsored through its membership the Alfred University Forum. From time to time groups of men from this organization have appeared as representatives of Inter-Faith Cooperation, at service clubs, church groups and on the air.

During the coming year, plans have been made for Vesper services conducted by the two organizations, discussion groups on Sunday evenings and occasional smokers, at which there will be guest speakers.

Each year these groups have been responsible for bringing to the campus as Assembly speakers, such men as: Kirby Page, Sherwood Eddy, Paul Harris, Dr. T. Z. Koo, Mrs. Harper Sibley, Ray Sweetman, Secretary of the Student Christian Movement, and Miss Katherine Duffield of the same organization.

1938-39 Officers

A.U.C.A.

President—Al Dyer
Vice-President—Dighton Polan
Secretary-Treasurer—Lewis Blackmer, Jr.

These two organizations of men and women on the Alfred University Campus, through their affiliation with the Student

Christian Movement, are likewise a part of the World's Student Christian Federation, which brings together twenty-three national student Christian movements enrolling more than three hundred thousand students and faculty members. Since its creation in 1895 the Federation has grown steadily and increased its influence, its spirit being undiminished by the World War. Today it stands out as one of the most potent influences for world harmony.

"In a world torn by war, class conflict, racial tensions, organized selfishness, nationalistic ambition and materialism the World's Student Christian Federation dares to believe in a Christian World Community and works to create it."

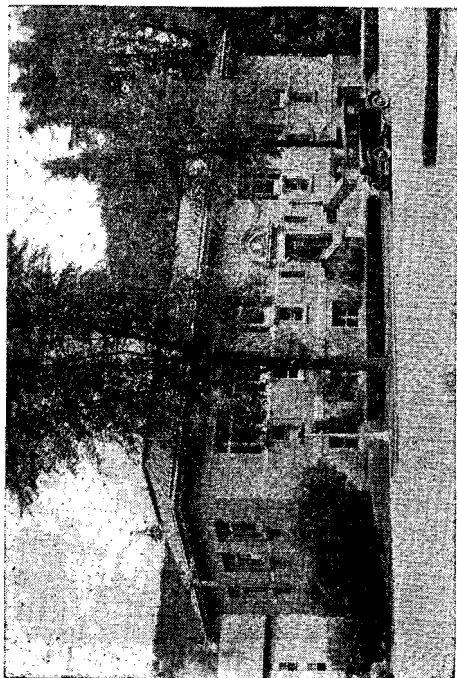
Those students who make up the membership of the Y.W.C.A. and A.U.C.A. extend to the members of the entering class, a sincere invitation to join them in their united efforts to achieve this ideal.

STORY OF ALFRED UNIVERSITY

To you young men and young women coming upon the campus of Old Alfred for the first time, coming to make yourselves Alfred's and Alfred yours; to you I say the questions will naturally arise: "How and when and why did Alfred University start," "What has it been?" "How has it become what we now see?" To be sure, there is a spirit and ideal here that you can learn about only by contact and experience with it; but glimpses at the story of its past can be given, which will aid you to learn of its spirit.

Just one hundred and two years ago the fifth day of next December, thirty-seven young people got together in an upper room in one of the eight or ten houses that made up Alfred Center, as it was then called, forming the select school, the seed of Alfred University. The teacher was a young man named Bethuel C. Church. He taught one winter, and was succeeded the second winter by a student from Union College, named James R. Irish. The school was already a success and people had said, "Go to, let us build a school building for our new school." This was done by the fall of 1837. The new building had 28 by 38 feet floor space and was ten feet high to the eaves. It was surmounted by a cupola which caused the students to dub it the "Horned Bug," but more dignified people called it "The Cadmus." It cost \$550.

In 1839, when Mr. Irish resigned, another Union student, Jonathan Allen, famous in Alfred history, took charge and gave his whole life to the building up of Alfred



The Carnegie Library

University. When the little select school was chartered as an academy in 1843, his title became Principal, and when it asked in 1857 for a college charter, but got a university charter, his title was changed to President. He died in the presidential harness ten years later.

Although "The Cadmus" was enlarged still bigger ideas were incubating. A tract of forest land was bought on the lower slope of Pine Hill (perhaps you are sitting somewhere on it as you read this) and was slowly made to resemble a campus. By 1846, three new buildings appeared on the hillside. Lumber and labor were cheap, much of both was donated, so that the total cost of these structures was \$16,000. There was North Hall, a dormitory, which had a checkered career. It stood about where the Steinheim now stands. In 1868 it was sold to the school district and moved down to the present site of Kanakaden Hall and used as a school house. But its "moving down" propensities had not disappeared, for it was acquired by a private individual and moved still further down the hill and fitted up as a hotel. This private individual was Mr. William C. Burdick, who, in 1896 allowed the University to use the building as a dormitory. Later his heirs gave it to the school. Have you guessed it? Yes, that's it, its present name is—Burdick Hall.

Then, there was old South Hall, a girls' dormitory. It stood where the Social Hall now is, and went up in smoke one cold February morning in 1858. Middle Hall, a boarding place, and a home for some of the teachers, stood on that old cellar site south of the Steinheim. Later it came to be the home of President Allen, and just after being wholly remodeled as a college dormitory, it was burned early in 1912.

Meantime the old Chapel (Alumni Hall, with the quill-pen weather vane), 1852, and the Brick, 1859, so-called to mark its contrast with all the other buildings, which were of wood, appeared. In due time (1863-66) was completed the William A. Rogers Observatory (now taken down) introducing the name of one of the most famous men in the field of science Alfred has ever possessed.

When President William C. Kenyon ended his labors in 1867, all eyes turned to a member of the faculty, Jonathan Allen, as his logical successor. Professor Allen had been a student in that first select school, and like some of his classmates, had paid his tuition by chopping six cords of four foot wood. He shrank from the task imposed upon him by the trustees, but proved that they and other friends had been right in naming him president, for under his direction Alfred University prospered, and his influence spread far and wide in the land.

In 1879 the unique and beautiful structure called the Steinhelm was finished. It represented many things, including a Rhine castle, the geological formation hereabouts, and in its interior finish, many local woods. The building and its collections were bought by the University.

At President Allen's suggestion, a suitable monument to President Kenyon was erected (1882) in the beautiful Kenyon Memorial Hall. The Gothic was a faculty member's home, and was purchased by the University in 1875.

President Allen managed Alfred's affairs for an even quarter of a century, dying in 1892. The late Professor A. B. Kenyon, as acting-president for a year, and Dean Ar-

thur E. Main as President for two years, brings our story to 1895, when President Davis began his long and successful service as bullder of the New Alfred. Then came others of our familiar buildings: Babcock Hall of Physics (1897) (burned in 1929), the Ceramic School (1900), Kana-kadea Hall (1908), the School of Agriculture (1909), the Carnegie Library (1912), the central heating plant (1917), Allen Memorial Laboratory (1923), Track and Field House (1929), Susan Howell Social Hall (1930), Bartlett Memorial Dormitory (1931), and the new Ceramic College building (1931). In November (1932), the Brick was largely destroyed by fire and remodeled in 1933. During 1934 the new Hall of Physics was completed. These buildings constitute the obvious Alfred of 1938. Again let it be remarked that knowledge of the inner Alfred—the soul of these buildings and campus—is a matter of slow growth in appreciation. Let me drop one hint. It is said that when South Hall was on fire in 1858, one of the loyal supporters of the school, accompanied by his wife, was riding to town in the old farm wagon. When the pair reached the crest of the hill west of the village and saw the flames and smoke, the wife exclaimed: "South Hall's afire! I see where I wear my old dress another year."

Incidents like this enable us to sense more vividly the meaning of a stanza of Alma Mater which runs:

"She was founded in toil, cemented with blood,
And nurtured through yearnings and tears.
Her treasure, the hearts of brave heroes
who stood
Undaunted throughout trying years.
Each stone was a prayer and her battle
ments there,

Have memories of purposes strong.
Staunch daughters and sons are her monuments fair,
And they lift up the grateful song."

1933 saw another important page written into the history of Alfred University. The long term of President Davis came to a close (1895-1933) and Dr. Paul E. Tittsworth was appointed to take his place. The school mourned the death of this truly great leader, a scant few months later. He made his short presence keenly felt and was loved by all those who were fortunate to know him. Dr. J. Nelson Norwood was appointed President in his place, and is undertaking to carry on the work of his illustrious predecessors.

In 1936, Alfred University celebrated the 100th anniversary of its founding. Highlights of the five-day Centennial celebration were a pageant, a Centennial convocation, and the 100th annual commencement. Many distinguished guests attended the celebration, among them Miss Frances Perkins, Secretary of Labor. The Centennial was preserved for future generations of Alfredians, on motion picture film.

ADMINISTRATION RULES

REGISTRATION RULES FOR THE COLLEGE OF LIBERAL ARTS

Students will register at the Registrar's office or the Library on registration days. A fee of five dollars (\$5.00) will be charged for late registration.

Students are expected to register for no more than 17 hours, but if a student has an average standing of B in the preceding semester he may register for 18 or more hours upon the approval of the Dean and Registrar.

Physical Training may be taken in addition to the maximum of 17 hours.

Regulations concerning standings to be maintained by students to entitle them to the privilege of registration without probation the following semester:

Freshman Year, first semester, no definite index. Second semester, 0.20.

Sophomore Year, first semester, 0.40. Second semester, 0.60.

Junior Year, first semester, 0.80. Second semester, 1.00.

Senior Year, first semester, 1.00. Second semester, 1.00.

For graduation it is required that a student have an average scholarship index throughout his course of 1.00.

All indices mentioned above are cumulative and are based on grades for the course thus far.

For complete details see the catalogue of the College of Liberal Arts.

Students desiring to drop a subject for which they have registered, must obtain permission from the instructor, and report to the Registrar's office.

No subject can be dropped after the first week of the semester. For exceptions see grade "W" below.

REGISTRATION RULES FOR THE COLLEGE OF CERAMICS

The procedure for registration in the Ceramic College is the same as that for the College of Liberal Arts and all the registration rules mentioned above hold equally for Liberal Art and Ceramic students except the regulations concerning standings to be maintained by students to entitle them to the privilege of registration the following semester. In the College of Ceramics they are as follows:

Freshmen are required to have an average scholastic index of 0.50.

Sophomores are required to have an average scholastic index of 0.75.

Juniors and Seniors are required to have an average scholastic index of 1.00.

A student, whose average cumulative index falls in a range between the average index mentioned above and an index of 0.50 less than that average index, shall be placed on probation for the following semester. If at the end of the probationary period the average cumulative scholastic index fails to come up to the requirement for his class he shall be dismissed for low scholarship.

A student, whose average index at the end of a semester falls below the range specified for probation, shall be dismissed because of low scholarship.

For further rules see the catalogue of the New York State College of Ceramics.

ASSEMBLY

On each Thursday morning at 11:00 o'clock there is a College Assembly at

which an address or entertainment is given. Attendance credit will be allowed provided absences do not exceed three for the semester. *No excuses for assembly are granted.* Four semesters of attendance credit in assembly are required for graduation.

STANDINGS

The standings of students are reported to them only by letters, and not by percentages.

"A" signifies excellent or superior work; "B" signifies good work or above the average; "C" signifies average or fair work; "D" signifies poor or unsatisfactory work, and is the lowest passing mark; "E" signifies conditioned failure which may be made up by re-examination, or other conditions imposed by the instructor; "I" signifies that work is unfinished; "W" signifies that course has been dropped; "F" signifies failure, which may be made up only by repeating the course in which the grade was received.

A condition or "E" grade shall be given whenever a student has failed to do work of a passing grade, but has done sufficient work to be able to complete the course without repeating the class work. A condition may be removed any time during the following semester. Upon report from the instructor that the condition has been removed, the office will change the grade from "E" to "D".

An *incomplete* (designated by the letter "I") shall be given to the student whose work has been of passing grade but who has not completed the full amount of work required by the end of the semester. An incomplete may be removed during the following semester, when the student has satisfactorily completed the required work.

The grade "W" will be given to all students who drop a course after the first week of the semester and within two weeks prior to the beginning of final examinations providing the consent of the instructor is secured. If a student drops a course within two weeks of examination time, the final grade shall be "F". The "W" shall count as (-1) in determining an index. A student may be excused from these penalties by vote of the faculty for good and sufficient reasons.

When a student has failed to complete one-half of the work required in a course, the final grade will be "F" and not "I".

An incomplete or a condition which is not removed during the next following semester of residence in the college, shall automatically be changed in the office to a failure (F) grade.

No credit is given, except by special vote of the Faculty, for one semester of any course which the instructor has designated to be pursued for a full year.

EXAMINATIONS

Final examinations are held at the close of each semester. Occasionally, written tests are held during the semester. Fees will be charged for all examinations taken by those not regular members of classes or for examinations or announced hour class tests taken at other times than those appointed. The fee for a special examination to take the place of a final examination is \$5. The fee for any special test to take the place of an announced one-hour class test is \$1.

When the student wishes to take a special examination or class test, he shall bring to the instructor a receipt from the University Treasurer, saying that the fee for the special examination or test has been paid. This receipt must be countersigned

by the Dean (or by the Registrar in the absence of the Dean) to show that permission has been obtained to take the special examination. No special examination will be given by an instructor unless this receipt, properly countersigned, has first been presented.

ATTENDANCE REGULATIONS

Sec. 1. Regular attendance at class exercises is expected. In the event of absence for any reason the student is expected to make up the work to the satisfaction of the instructor. If, and when possible this arrangement should be made before the student absents himself from class.

Sec. 2. Excuses for absences will be granted for the following reasons only:

a. Necessary absence incurred by one representing the University on official business such as participation in athletics, dramatics, student conferences and debates, provided arrangement has previously been made with the Dean.

b. Illness, provided the student arranges with the University physician or infirmary superintendent, secures a satisfactory statement from the officials concerned and files same within one week after the absent period.

c. Serious illness at home or other imperative matters necessitating the student's absence, provided such absence is arranged for with the Dean within one week from the date of the absence.

Sec. 3. Absences per semester for each course may be permitted without penalty not to exceed the number of class exercises. Two tardinesses may be reported as an absence. No absence, however, may be taken by any student on the day immediately preceding or following any college recess.

Sec. 4. Seniors and Juniors who have a cumulative index of 1.25 or better and have not been previously disciplined for violation of rules limiting absences shall have the privilege of voluntary attendance at classes on days other than those which immediately precede or follow any college recess. Seniors and Juniors with a cumulative index above 2.00 shall have the privilege of voluntary attendance regardless of previous disciplinary action. If in the opinion of the Dean this privilege is detrimental to the welfare of any student, that student shall forfeit this privilege.

Sec. 5. Penalties:

a. All students absent without excuse on the day next preceding or immediately following any college recess shall have their credit for that semester reduced an hour for each course in which the absence occurs.

b. Whenever any student, except those Seniors and Juniors who have the privilege of voluntary attendance, has reached the limit of absences permitted in any course this fact shall be reported by the Instructor to the Dean who will investigate and in the event of further absences shall use such disciplinary measures as may seem necessary.

c. If a student's physical condition, as indicated by the number of absences caused by chronic illness, is such that he is unable to do satisfactory work he may be required to withdraw from college.

Sec. 6. No excuses for any reason shall be granted for absences from assembly. Three absences from assembly per semester are allowed.

Sec. 7. Absence from any class on the first day of the semester shall be interpreted as late registration for which a fee of five dollars (\$5) is charged. Absences will

be counted from the first session of the class at the beginning of the semester.

Sec. 8. These regulations are administered by the Deans whose decision is final.

LIBRARY REGULATIONS

1. Library Hours—The Library is open for regular work from 8:30 A. M., until 12:00 o'clock, and from 1:30 to 5:30 P. M., on week days. It is also open from 3:00 to 5:00 P. M., on Saturday and Sunday, and from 7:00 to 9:30 P. M., every evening except Thursday and Saturday, on these evenings it is open from 7:30 to 9:00 P. M.

2. Loan of Books:

(1) Books may be retained two weeks with the privilege of renewal. (Current fiction may be retained for one week without the privilege of renewal).

(2) A fine of two cents a day, holidays included, will be imposed for all books overdue.

(3) Students whose fines are in arrears must settle the same before receiving their final standings at the end of each semester.

(4) Books are transferable on cards at the desk. Borrowers are not expected to pass books from one to another without making the transfer at the desk.

3. Reserve Books:

(1) Reserve books used in the library must be returned to the desk before leaving the room.

(2) Reserve books may be drawn from the library at 9 o'clock at night and must be returned not later than 10 o'clock the following morning. Failure to comply with this regulation on the part of any student will subject him to a fine of 25 cents. Continued failure to comply with the above regulation will result in loss of all library privileges.

(3) Reserve books drawn Friday must be returned Saturday afternoon at 3 o'clock, and those drawn Saturday night must be returned Sunday afternoon at 3 o'clock.

ATHLETICS

All students, unless excused by the University Physician are required to do one semester hour in physical training each semester during the freshman and sophomore years, under the supervision of the Director. The required work of the freshman year shall include lectures and gymnasium practice. Sophomores shall elect either advanced gymnasium practice or athletic sports supervised by the Department of Physical Education.

See Eligibility Rules.

SPECIAL RULES

1. Any painting on the University buildings or any other University property is strictly forbidden. The classes as a whole will be penalized for any violation of the rule by any of its members.

2. All smoking in classrooms or in laboratory buildings is prohibited.

3. Smoking on the part of any college woman while under college jurisdiction is strictly forbidden, except in the rooms provided expressly for that purpose by the University.

4. The use of intoxicants by any student is forbidden. As a condition precedent to the students being accepted and remaining in the University, it is understood that the use, possession, or transportation of intoxicating liquors is forbidden. Violation of this rule of the University is sufficient cause to terminate a student's connection with the University.

RULES FOR STUDENT CONDUCT

AT EXAMINATIONS

1. All books, wraps, etc., not needed for the examination must be placed in the front of the room.

2. Any communication between students must go through a professor or proctor in charge.

3. The appearance of cheating must be avoided. Circumstantial evidence can lead to dismissal.

4. Heavy sweaters are not permitted at examinations of an hour or longer.

5. No blue books are to be taken from the examination room. (The proctor may permit question papers to be taken out.)

CHEATING

Cheating in laboratories, tests and examinations will not be tolerated. The burden of proof will be on the student, who must avoid even the appearance of cheating. Individual instructors will handle cases of cheating as they see fit. Every effort will be made to see that every dishonest student is so labeled in letters of recommendation.

INFIRMARY REGULATIONS

1. Office hours at the Infirmary every morning at 9 o'clock except Saturday and Sunday. Students wishing to see Dr. Hitchcock must be at the Infirmary promptly at nine.

2. Students must have a written order from the Infirmary to see Dr. Hitchcock in his private office.

3. Only in an emergency is a student justified in calling Dr. Hitchcock directly.

4. Students calling at the Doctor's office without a written order will be charged the regular price, except in an emergency, that to be determined by the Doctor.

5. Students living in private homes must notify the Infirmary when ill and before calling the Doctor, except in an emergency.

6. Students in their own houses must notify the Infirmary and the nurse will visit them before an excuse can be given.

7. All excuses for illness will be issued at the Infirmary and must be filed at the Registrar's office not later than one week after the end of the absence period.

8. Students' visiting hours at the Infirmary are from 3 to 4 in the afternoon, and 7 to 8 in the evening.

9. After being admitted to the Infirmary students are not allowed visitors for the first 24 hours, without special permission.

10. Permission to visit the opposite sex must be obtained from the Dean of Women.

FRESHMAN RULES

ARTICLE I

The Freshman Rules shall be incorporated into the By-Laws of the Constitution of the Students Association of Alfred University.

ARTICLE II—FRESHMAN RULES

1. All freshman men shall be required to wear the regulation green cap with yellow button, and all freshman women shall wear the green beret, from Freshman Week in September until semesters in January. The cap shall be worn without alteration in any way, from six a. m. to six p. m., Monday through Friday, and at all home athletic contests. Freshmen may remove their caps and berets if the freshmen are victorious in an organized contest which will be conducted by the Senate after Thanksgiving.

2. All freshmen shall be forbidden to use tobacco in any form on the campus, i. e., east of Main Street, between Terrace and Pine streets, except in private dwellings and Burdick Hall.

3. Freshmen shall be strictly required to observe all the rules of common courtesy, and shall show due respect to University Faculty and Upperclassmen by touching caps, giving preference in entering and leaving buildings, etc.

4. Freshmen shall greet all faculty members, students, and campus guests with the customary "hello" or a similar greeting.

5. All freshmen shall keep off the grass on the campus as defined above.

6. The regulation frosh buttons shall be worn conspicuously from the time of registration until four weeks after classes begin.

7. Freshmen are prohibited from wearing monograms of any athletic association except that of Alfred.

8. Freshmen shall learn the Alma Mater and all Freshman Rules, and shall be required to pass an examination on the same on or about October 15, at the discretion of the Senate.

9. Men of the Freshman Class who violate such Rules as set forth above shall be tried and sentenced by the Freshman Court, whose members shall execute, or cause to be executed all decisions rendered by that body. Women of the Freshman Class who violate these rules shall be tried and sentenced by the Women's Student Government.

FRESHMAN COURT

ARTICLE 1. Name. The name of the organization shall be the Freshman Court.

ARTICLE 2. Purpose. SEC. 1. The purpose of this court shall be to uphold Alfred traditions and campus rules.

SEC. 2. To bring male offenders, freshmen, against such traditions and rules, up for trial.

SEC. 3. To prosecute offenders by suitable and just punishment for infringement of said traditions and rules.

ARTICLE 3. Organization and Administration. SEC. 1. The Blue Key, service honor society, shall appoint a chief judge and six jurors of Freshman Court from the Senior Class. At least one shall be a mem-

ber of the Senate and at least three shall be members of the Blue Key.

SEC. 2. The Freshman Court shall meet weekly, and shall summon violators of freshman rules before its meetings. Penalties, including wearing of sign, public apologies in assembly, etc., may be imposed.

SEC. 3. Paddling shall be eliminated from the penalties for violations of freshman rules and no monetary fines may be imposed.

SEC. 4. For flagrant and persistent violation of freshman rules, the violator may be summoned before a meeting of the Dean of Men, chief judge of Freshman Court, president of Blue Key, and president of the Senior Class. Suitable penalties may be imposed, including the denial of permission to leave town, and the denial of dance, movie, and Collegiate privileges.

SEC. 5. The constitution of Freshman Court may be amended by a two-thirds vote of the Blue Key with the ratification of the Senate.

SEC. 6. Any member of the Court may be removed from office for attitude, indifference or violation of the spirit of the Court, by a two-thirds vote of the Blue Key.

FRESHMAN COURT 1938-39

Chief Judge—Richard Thomas

Jurors—Robert Molyneux

Robert Perry

Isadore Goldenberg

Julius Siegel

Walter Gardner

Francis O'Neill



Chaplain James C. McLeod

RELIGIOUS LIFE IN ALFRED

The community of Alfred was established by a small group of pioneers of deep religious conviction. In the development over more than a century of the life of the institution of higher learning within the community, it is natural that one finds the same fine, tolerant Christian spirit prevailing. Founded by a small sect of Protestantism, the Seventh Day Baptists, the doors to its halls of learning have always been open to young men and women of all creeds and races. It has been the observation of many a visitor that nowhere is there greater tolerance for all beliefs than at Alfred University.

Those who this year enter Alfred University as Freshmen will find opportunity to worship at many different services. The oldest church group is the Seventh Day Baptists who hold a morning worship service on the Sabbath, (Saturday) at eleven o'clock in the Village Church. All are welcome to attend. On Sabbath evening (Friday) there is a Young People's meeting at eight o'clock at the Gothic.

Since the vast majority of the student body worship on Sunday, there are several services which you may attend. At eleven o'clock Sunday morning there is a service of worship at the Village Church, known as the Union University Church service. A large number of the student body and the faculty attend this service at which the University Church Choir of forty voices sings.

At 10 o'clock Sunday morning, those who are Catholic may attend the Mass at the Gothic Chapel, conducted by a visiting priest from St. Bonaventure College.

At 5 o'clock Sunday afternoon, an Evening Prayer Service is conducted at the Gothic Chapel by the Reverend John Gilbert Spencer of Hornell, New York.

In addition to the formal religious services, there are several religious groups on the campus, the oldest of which are the two Christian Associations, known as the A.U.C.A. and the Y.W.C.A. The latter holds regular meetings Sunday evening at seven o'clock for the women of the college, and the men's group meets twice a month and sponsors several other meetings during the year. A complete statement of these organizations, their function and purpose is found in the front part of this handbook which is published and distributed by them.

Newman Club 1938-39 Officers

President—Harold Rhodes
Vice-Presidents—Robert O'Neill, Russ Barreca
Secretary—Bernadine Eberl
Treasurer—Bill Dorhan

The Newman Club for Catholic students was established in 1931 under the direction of Chaplain James C. McLeod, and all Catholic students are welcomed into its membership. In the past years this group has been instrumental in bringing to the campus speakers of distinction and also in sponsoring social activities for its members.

The Brent Fellowship, newest of the religious groups is sponsored by the Episcopal Church for men and women affiliated with that denomination. Only a year old it promises to make a real contribution to the spiritual life of the campus and this year will bring several speakers to the campus.

Although no formal organization has been established for Hebrew students of a definitely religious nature, the members of the Kappa Nu Fraternity (National Hebrew) have sponsored Sabbath evening services at their home and this year will sponsor several such services.

Nine years ago, the University Board of Trustees, in cooperation with the Council of Church Boards of Education, established the office of college chaplain and called to that position, the Reverend James C. McLeod, the present chaplain of the college. As pastor of the Union University Church, and director religious activities, he conducts the daily Chapel service, at which attendance is voluntary, and makes himself available to the students for personal interviews. He may be reached at his office in Kenyon Hall or at his home on Park Street. The McLeod home always has the latch string out, for all students are always welcome.

THE UNION UNIVERSITY CHURCH (Interdenominational)

James C. McLeod, Minister

Morning worship at 11 o'clock each Sunday. A vested choir of forty voices sing at each service. The church is governed by an executive committee composed of six students and four faculty members, elected annually.

THE SEVENTH DAY BAPTIST CHURCH

A. Clyde Ehret, Pastor

Morning Worship at 11 o'clock each Sabbath morning.
Sabbath School at 10 A. M.
Senior Y.P.S.C.E. each Friday at 8 P. M.

CHRIST CHAPEL
(Episcopal)

Dr. John Gilbert Spencer, Rector

Evening Prayer service at the Gothic at five o'clock each Sunday afternoon.

CATHOLIC MASS

Service at the Gothic Chapel at 10 A. M. each Sunday.

DAILY CHAPEL

James C. McLeod, Chaplain

Service at ten o'clock each Monday, Tuesday, Wednesday and Friday while college is in session.

ORGAN VESPERS

Ray Winthrop Wingate, Organist

Each Friday evening from seven-thirty to eight o'clock at the Village Church.

CARILLON RECITALS

STUDENT GOVERNMENTS OF ALFRED UNIVERSITY

SENATE

1938-39 Officers

President—John L. Dougherty, Jr.

Vice-President—Olaf M. Loytty

Secretary—Beatrice C. Collins

Treasurer—Isadore Goldenberg

Eleven Seniors, representing Alfred University's fraternities, sororities and independent groups, annually make up the Student Senate, which has supreme authority over student activities. The Senate for 1938-39 already has conducted the first set of campus elections under a new election system, and has instituted a system of modified Freshman Rules and a Freshman Court. The Senate also makes up a budget, allotting grants to deserving organizations.

Senate meetings are open to all students. Senate is the student life of Alfred University. You are welcome to bring your suggestions, complaints, ideas to the meetings, and they will be properly considered.

CONSTITUTION OF STUDENT'S
ASSOCIATION OF ALFRED
UNIVERSITY

As Revised May 5, 1938

ARTICLE I—NAME

Section 1. The name of this organization shall be the Student's Association of Alfred University.

ARTICLE II—PURPOSE

Section 2. Realizing that the Faculty has supreme authority over all matters connected with student life, and yet knowing that they are willing to cooperate with the students to promote the welfare of the school, the students have organized themselves into the Student's Association of Alfred University in order to develop a wise and intelligent self-control, to preserve and regulate beneficial customs and traditions of Alfred, to have charge of and control all college elections, and to assume, whenever expedient, the control of student affairs, all subject to the further provisions of this constitution.

ARTICLE III—MEMBERSHIP

Section 1. All persons enrolling as students of Alfred University shall be considered as members of this association.

Section 2. No tax may be levied for the support of this except as may be voted by the Association for any purpose that the Association may deem necessary.

ARTICLE IV—ORGANIZATION

Section 1. The Student's Association shall be headed and represented by a Senate consisting of one senior from each of the following organizations, namely: Delta Sigma Phi, Theta Kappa Nu, Klan Alpine, Kappa Psi Upsilon, Kappa Nu, Pi Alpha Pi, Theta Theta Chi, Sigma Chi. The non-fraternity group shall have three representatives (Amendment 1, 1938).

Section 2. The Senate shall have a President, Vice-President, Secretary-Treasurer and such other officers as it may deem necessary. The President, Vice-President

and Secretary-Treasurer shall also act as officers of the Student's Association.

ARTICLE V—ELECTIONS

Section 1. On or before the second Monday in April, each organization shall appoint a Junior to represent that organization on the Student Senate.

Section 2. The President of the Senate may call these representatives to attend any meeting in order to observe the procedure of the Senate.

Section 3. Each Senate member shall be required to take the following oath of office when he takes over the duties as a Senator:

"I, upon my honor as a student of Alfred University, solemnly swear that I will carry out the duties of this organization to the best of my ability, in an unbiased, trustworthy and gentlemanly fashion."

The president has the right to call upon any or all members of the Senate to give the above oath at any meeting as he sees fit.

Section 4. Officers of the Student Senate shall be elected at the last meeting of the retiring Senate. Only incoming Senators shall vote in the election of new Senate officers. (Amendment 2, 1938).

ARTICLE VI—ELIGIBILITY

Section 1. Members of the Student Senate shall be Seniors.

Section 2. No member of the Senate shall lose his seat on account of a change in his college ranking.

Section 3. Two consecutive, unexcused absences from meetings by any member shall terminate his membership; however,



The New Ceramic Building

an excuse for an absence must be presented to the Senate for acceptance or rejection.

Section 4. Any member is liable to impeachment and removal for misconduct in office by a three-fourths vote of the Senate.

Section 5. Any organization may permanently change its representative with the consent of the Senate, if said change is deemed necessary.

ARTICLE VII—MEETINGS

Section 1. The Senate shall hold regular meetings at least once a month on a date set at the beginning of each school year by the Senate.

Section 2. Special meetings may be called by the president at any time.

Section 3. Three-fourths of the members shall constitute a quorum at these meetings.

ARTICLE VIII—POWERS

Section 1. The President shall preside at all meetings of the Senate, of the Association, and of the student body.

Section 2. The President of the Senate shall have the power to vote.

Section 3. The Secretary-Treasurer shall keep the minutes of all meetings of the Senate and of the Association; he shall attend to the correspondence of the Association and perform such other duties as are usually performed by the Secretary-Treasurer of such an organization. He shall also have charge of such funds as are voted by the Association.

Section 4. The Senate shall have final authority over all college customs and tradition; it shall regulate and supervise stu-

dent activities as stated in the constitution and regulation of student activities; it shall represent the Association in all its relations with the Faculty, Alumni, Trustees and other exterior bodies; it shall be authorized to use discretionary power in all matters requiring immediate action.

Section 5. The Senate shall govern the following campus elections:

1. Officers of the Senior, Junior and Sophomore classes.
2. Kanakadea Staff.
3. Officers of the Athletic Council.
4. Freshman Court.
5. Student Life Committee.
6. Women's Student Government.
7. Flat Lux.

in the following manner:

(a) The names of candidates for campus officers must be presented two weeks before the first Thursday in May. (Amendment 3, 1938).

(b) All represented groups are to nominate one representative. (Amendment 4, 1938).

(c) Candidates may also be presented to the Senate outside of the nominations submitted by each organization if accompanied by a petition signed by 75 students. (Amendment 5, 1938).

(d) Members of each class shall nominate their candidates for the following year, in meetings of the fraternity, sorority and outsider groups. (Amendment 6, 1938).

(e) Pledges are to vote on all nominations. (Amendment 7, 1938).

(f) All nominations should be made public within one week after the Senate receives them. (Amendment 8, 1938).

(g) The Merit System must be rigorously upheld and enforced.

(h) An index of 0.5 for the semester prior to election and an average index of 0.8 will be required of all nominees.

(i) Election day shall be the first Thursday in May. (Amendment 9, 1938).

(j) At least one member of the Student Senate shall be present at the meetings for the election of officers to present the names of the nominees. All meetings for the election of class officers will be held on the same day at the same hour, as designated by the Student Senate.

(k) The final elections of officers shall be voted upon by closed ballot by the respective groups. A majority vote of those present shall be necessary for election. (Amendment 10, 1938). In the event a majority vote is not obtained on the first ballot, the two highest shall be voted for again until a majority is obtained. (Amendment 11, 1938).

Section 6. Freshman elections shall be conducted in the presence of the Freshman class by the Student Senate before Nov. 1. It shall be the duty of the Senate to see that some form of class competition is carried on between the Freshman and Sophomore classes sometime before Nov. 10.

Section 7. The Student Senate shall have power to take cognizance of the violation of the campus rules and shall be a court of last resort in the interpretation of these rules.

Section 8. It shall be the duty of the Senate to condemn any practice which may be deemed not in accordance with the true college spirit; to summon to its meetings individuals indulging in such practice or violating Campus Rules, and in case of

proven misconduct to inflict such penalties as it shall deem expedient.

Section 9. In all cases, its power may extend censure of individual or groups of individuals for misconduct.

Section 10. The Student Senate, either on its own initiative, or upon the suggestion of college officers, shall assume a vigorous control of situations arising in the field of student activities and student government.

Section 11. Violation of all rules, excepting those set forth in Article II under Campus Rules, shall be referred to the Student Senate for settlement. The Senate and Freshman Court may or may not publish the names of the convicted offenders in the Fiat Lux.

ARTICLE IX

Section 1. The Student Senate shall pay the Christian Association one dollar per page for publishing in their annual handbook the revised Constitution and By-Laws of the Students' Association.

Section 2. Only letter men in football, basketball, cross-country, track and wrestling may wear the regulation V-neck sweaters.

Section 3. Dances for the benefit of the Athletic Association shall be managed by a person appointed by the athletic council.

ARTICLE X

Any student transacting any financial business for any student activity or in any activity involving students of Alfred University, shall be responsible to a Faculty member chosen annually by the Senate from a number suggested by the Faculty. Such a responsibility will be interpreted to mean a strict accounting of methods and

finance at whatever time the auditor chooses. Should any officer fail to do so, the auditor shall suggest an action to the body that placed him in that office.

ARTICLE XI—AMENDMENTS

Section 1. This Constitution and By-Laws may be amended at any regular meeting of the Senate by a three-fourths vote of the entire Senate, providing such amendments have been read at a meeting at least one week previous.

Section 2. The Athletic Association Constitution and the Women's Student Government Constitution may be amended as stated in the different articles under their respective Constitutions.

THE MERIT SYSTEM

1. All officers and members of any student organization or activity in Alfred University or in the New York State College of Ceramics shall be classified according to a definite system of credits, the number of which shall be in proportion to the demand of each office upon the time of the student, as well as upon the honor of the position.

2. An index of 0.5 must be obtained at the end of each semester in order to hold any office on the campus or participate in athletics during the following semester.

3. All teams, organizations, and groups, recognized as existing upon this campus, shall be conducted in accordance with the following eligibility rules:—

At the beginning of the functioning periods of these said bodies, the faculty advisers or executive heads shall submit to the Student Senate a list of those in whom they are interested. The Senate

shall obtain their indices for the first preceding official index and notify the responsible parties of any who may not be eligible according to section two above, and any other rules in force at that time. At the request of the before mentioned parties the Senate shall ask the Dean to obtain the current indices of those previously found to be ineligible, and to determine if they are then eligible. All former ineligibles, found to be eligible, shall be allowed to continue in that organization until again found ineligible. All those found ineligible shall not be permitted to represent that organization during the time in which they remain in such state.

4. The activities in which anyone may engage during *any one time* shall be limited to 15 units, subject to such requirements as are otherwise stated.

5. In order to insure that the Merit System shall not work injustice to anyone, the President of the Student Senate, and the President of the Athletic Council, shall sit with a faculty committee, to be known as the Merit System Scale Committee.

Points are as follows:

ALFRED ATHLETIC COUNCIL	Units
President	7
Secretary	3
Members	2

ATHLETICS

Team Members (major sports).....	4
Team members (minor sports).....	3
Freshman Teams	3
Class and Fraternity teams	2
Captains (major sport).....	2
Captains (minor teams).....	1
Captains (Freshman teams).....	2

MANAGERS

Football	6
Track	5
Cross-country	5
Basketball	6
Interscholastics	5
Wrestling	4
Tennis	4
Assistants	3

TRAINERS	3
Assistants	1

CLUB MEMBERS

Theta Alpha Phi	5
Glee Club	5
Varsity "A" Club	
President	3
Other Officers	2

Purple Key	
President	3
Other Officers	2
Members	1

Junior Follies	
Director	3
Assistants	1

Freshman Camps	
Director	5
Assistants	3
Councilors	1

Interfraternity and Intersorority Councils	
President	5
Other Officers	3
Members	1

Campus Court	
Judge	6
Examiners	4
Jurors	2

Christian Associations	
Presidents	4
Other Officers	2
Cabinet Members	1
Class Officers	
Upperclass Presidents	5
Underclass Presidents	3
Class Treasurers	2
Other Officers	1
Department of Campus Duties	
Administrator	7
Assistants	4
Fraternity Officers	
President	3
Steward	3
House Manager	3
Treasurer	3
Other Officers	1
Student Senate	
President	7
Secretary	3
Treasurer	3
Members	2
Women's Student Government	
President	7
Secretary	5
Members	2
PUBLICATIONS	
Fiat Lux	
Editor-in-Chief	7
Associate Editor	4
Assistant Editors	3
Reporters	2
Business Manager	7
Assistants	3
Kanakadea	
Editor-in-Chief	7
Associates	3
Business Manager	7
Associates	3
Art Editor	5

Freshman Handbook	
Editor-in-Chief	3
Associate Editor	2
Business Manager	2

ALL OTHER GROUPS

President	3
Other Officers	1
Intra-mural Association	
President	7
Representatives	1
Women's Athletic Governing Board	
Members	
Cheerleaders	4
Assistants	3

6. The Merit System shall be incorporated into the constitution and by-laws of the Students' Association of the College Department of Alfred University.

WOMEN'S STUDENT GOVERNMENT

1938-39 Officers

President—Norma Witschleben
Vice-President—Winifred Winikus
Secretary—Blanche Field
Treasurer—Adrienne Owre

Nine members, representing the sororities, the dormitory, and the independent group, annually make up the Council of the Women's Student Government, which has power to deal with the conduct of its members in their College life, insofar as these are not regulated by the Student Senate, and come within a list of regulations approved by a two-thirds vote of the Women's Student Government, and granted

by the Student Life Committee. This body has the power to inflict the penalties to enforce its decisions.

CONSTITUTION

ARTICLE I—NAME

This organization shall be called the Women's Student Government of Alfred University.

ART. II—MEMBERSHIP AND VOTING

Sec. 1. The membership of the Women's Student Government shall consist of all the women students in the College of Liberal Arts of Alfred University and of the College of Ceramics of Alfred University. Membership is not compulsory with those whose parents are residents of Alfred. All members shall have equal power of voting.

ART. III—PURPOSE—POWER

Sec. 1. The Women's Student Government shall have power to deal with all questions concerning the conduct of its members in their College life, insofar as these are not regulated by the Student Senate, and come within a list of regulations approved by a two-thirds vote of the Women's Student Government, and granted by the Student Life Committee. It shall have power to inflict the penalties to enforce its decisions.

ART. IV—COUNCIL

Sec. 1. The executive and judicial power of the Women's Student Government shall be vested in a council, composed of the president of the organization, the president of The Brick and seven other members, one of whom shall be chosen as an upper-

class representative of Theta Theta Chi, Pi Alpha Pi and Sigma Chi Nu, three of whom shall be chosen as representatives of the Brick and one of whom shall be chosen from the town girls.

Sec. 2. All business transacted in council meetings shall be kept secret unless otherwise ordered by a two-thirds vote of the council.

ART. V—ELECTIONS

Sec. 1. Election of the council shall take place by April 15.

Sec. 2. In case there is a vacancy in the council at any time, this vacancy may be filled by vote of the council.

Sec. 3. The representative from the Freshman class shall be elected by the class every two months. No Freshman shall be eligible for representative for more than two months in the year.

ART. VI—DUTIES OF OFFICERS

Sec. 1. The president shall be the executive officer of the organization, and shall call together and preside over all meetings of the organization and council.

Sec. 2. The duties of the vice president shall be to assume the duties of the president in the absence, or at the request of the president.

Sec. 3. The duties of the secretary shall be to keep the minutes of all meetings of the organization.

Sec. 4. The duties of the treasurer shall be to act as custodian of all funds of the organization, paying bills only by vote of the council.

ART. VII—ELIGIBILITY

Sec. 1. The President of the Women's Student Government shall be a Senior, and she shall have perferably served on the

council, either as a representative or as a member prior to her Senior year.

Sec. 2. Three unexcused absences from Council meetings by a member shall disqualify her from office.

Sec. 3. Any member is liable to impeachment for misconduct in office by a two-thirds vote of the Council and may be removed from office by a two-thirds vote of the entire Women's Student Government.

ART. VIII

A quorum of the Women's Student Government shall consist of at least two-thirds of its members.

ART. IX

Six members of the council shall constitute a quorum, and no action shall be taken by the council upon the agreement of five voting members.

ART. X—MEETINGS

Sec. 1. The President of the Organization with the advice of the Council, shall call a meeting whenever sufficient business demands it. Attendance at these meetings shall be compulsory.

Sec. 2. The council shall meet regularly every week for discussion of matters and for the transaction of such business as is necessary.

Sec. 3. The council shall appear at all Student Government meetings attired in the regulation cap and gown. The Juniors and Sophomores will wear only the gown.

ART. XI—PUBLICITY

Sec. 1. Each member of the organization shall be supplied with a copy of the Constitution and Regulations of the Women's Student Government at the begin-

ning of each College year. The Constitution and the Regulations shall be read by the president to the freshman class at its first meeting.

ART. XII

Sec. 1. After a careful and thorough explanation of the rules by the president of the organization, the Freshmen shall be required to pass an examination on the rules and regulations pertaining to W. S. G., attaining at least a B Grade on such an examination. This shall be conducted by the council not later than Nov. 1. In case anyone fails to pass this examination, due punishment will be inflicted until the grade is attained.

Sec. 2. Provision shall be made to send the president and a junior representative to the annual Inter-Collegiate Student Government Convention. In case the President cannot go, another delegate shall be elected by the organization from either the Junior or Senior Class.

ART. XIII—AMENDMENTS

Sec. 1. This Constitution may be amended by a two-thirds vote of the organization.

REGULATIONS

ART. 1—PREAMBLE

Sec. 1. The Women's Student Government heartily believes that normal comradeship between young men and young women, in mutual respect and reverence, in fine self-direction and self-control are essential to the co-operation of social life and activities with the claims of health and scholarship.

Sec. 2. The following regulations are an attempt to adapt the members of this organization to the special conditions of the college community. This organization expects its members to be guided by the underlying principles of wholesome social relationships in all situations whether covered by these definite statements or not. Disregard of these principles or violations of the regulations will be considered sufficient grounds for imposing penalties.

ART. 2.—CLOSING HOURS

Sec. 1. Closing hours are indicated on the opposite page. Following are the exceptions:

a. Senior women on the approved list may have later permission on Friday and Saturday nights. Approved list consists of Senior women recommended by the Dean of Women and the W. S. G.

b. 11 P. M. shall be the closing hour during vacation except by special arrangement with the house hostess.

c. 11 P. M. shall be the closing hour after all exams have ended.

FRESHMAN REGULATIONS

1. Freshman women shall not ride in cars with escorts after 6 P. M.

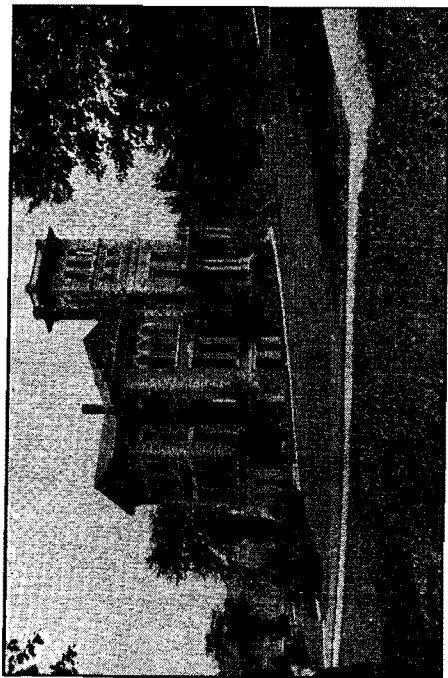
2. Freshman women shall not date during the first semester, except for the show Thursday evening and Friday and Saturday evenings.

(a) If at the beginning of the second semester a Freshman woman fails to attain at least a one point index (a C average) her case will be referred to the Dean of Women.

(b) A date shall be defined as any casual or pre-arranged meeting (lasting more than 15 minutes) with a man after 6:00 p. m.

CLOSING HOURS

	Mon.	Tues.	Wed.	Thurs.	Fri.	Sat.	Sun.
Seniors	10:00	10:00	10:00	2d show	11:00	11:00	10:30
Juniors	9:45	9:45	9:45	2d show	10:30	11:00	10:30
Sophomores	9:30	9:30	9:30	9:30	10:30	11:00	10:00
Freshmen	9:30	9:30	9:30	9:30	10:00	10:30	10:00
1st semester							
Freshmen	9:30	9:30	9:30	9:30	10:00	11:00	10:00
2d semester							



Kenyon Memorial Hall

SPECIAL REGULATIONS

1. Young women may not call for or meet young men at the houses where men live.

2. When a woman is invited to visit at the home of a man, she must show to the Dean of Women permission from home and an invitation from the man's mother or other member of the family.

3. When a woman is invited to visit other than a college woman or other than a near relative, it is necessary to show the Dean of Women permission from home.

4. Any overnight absence must be arranged with the Head of the House. Students may spend the night in residence houses other than their own only on Friday or Saturday night, unless by special permission. No woman must be absent from her own house after a college party of any kind. Special permission to go to her own home after any such occasion must be obtained from the Dean of Women. If the permission is granted, the student must return to her own house and report in person before leaving.

5. Women returning to college from home or a visit must be at house of residence before closing time.

"THE TEN COMMANDMENTS"

1. All permissions in accordance with the Student Government Regulations shall be granted by the President of the Council any time before 8:30 p. m. If you are unable to reach the President, permission may be granted by two other Council Members.

2. No more than six late permissions shall be granted unless the applicant has an index of 2.0.

(a) Late permission to work in the Ceramic School shall be granted by the President of the W. S. G. as she deems wise.

3. Restaurant privilege is allowed after college calendar events until 11:00 p. m. No restaurant privilege is allowed after this hour.

4. Women not attending college dances on the college calendar may with *permission* observe 11:30 p. m. closing hours, and be permitted to go to Hornell or elsewhere without such action being counted as a late permission, although, of course, with proper chaperonage.

5. Any member upon leaving town shall leave with the person in authority at her place of residence, information as to where she is going and her address while out-of-town.

6. Smoking shall be allowed only in such rooms as provided for by the University.

7. Beginning with Moving-Up Day all classes shall observe the rules of the classes above them.

8. Entertaining at the Houses shall be in accordance with the House Rules.

9. Each member is assessed \$1.25 per year.

10. The W. S. G. shall have the power to recommend any woman to the Dean of Women for suspension.

All Women's Student Government regulations are in effect as long as Women are on the campus.

STUDENT LIFE COMMITTEE

There is a college committee on Student Life composed of both faculty and student members. There are four faculty members, two of whom are elected by the faculty and two by the student body, and three students, one of whom is elected by the faculty and one by the student body and one by the Student Senate.

This committee shall be a regular medium of intercourse between students and faculty. It shall be its duty at all times to advise with the Student Senate and make suggestions to it bearing on matters of student conduct and self-government. The Student Senate will confer with this committee on any or all matters of student interest.

The committee has advisory supervision over all student social functions and amusements. It grants all dates for the campus social calendar and students desiring to promote any entertainment, party, class affair, dance, etc., must make application to the committee. All permissions granted shall at once be submitted to the Dean of Women who shall approve of the arrangements and chaperonage of such functions.

STUDENT LIFE REGULATIONS

No student social function shall occur within one week prior to examinations, during the examination period, or during Commencement.

Each fraternity or non-fraternity organization may have a maximum of four calendar parties per year.

Each fraternity or non-fraternity organization may have small parties subject to

the regulations which govern the large social functions. These parties end at 11:00 p. m.

Arrangements for all social affairs must be made with the Dean of Women by Monday of the week in which the party is held. Information must be given in regard to chaperones, date, place, and type of party. For small parties, the arrangements may be made later in the week, but not later than 24 hours before the party is held.

The chaperones for all parties must be chosen from the faculty unless by special arrangement with the Dean of Women.

If women are entertained for dinner, or otherwise, at fraternity or other houses where men live, a woman member of the faculty or the wife of a member of the faculty must be invited.

For each party a student committee of the organization must be responsible for carrying out the social regulations of the college.

No out-of-town dances are to be attended during the week except by special permission from the Dean of Women. During the week-end, out-of-town dances may be attended only if satisfactory arrangements are made with the Dean of Women. This applies also when visiting. (See sections 2 and 3 under Special Regulations.)

All social regulations apply to recess and inter-semester affairs as well as to those held during the college term.

MEN'S ATHLETICS

Alfred University offers opportunities for participation in and observation of, both Varsity and Freshman: football, cross-country, wrestling, basketball, track. Boxing, fencing, tennis and golf enthusiasts may participate in these activities under skilled supervision, although they are still minor sports.

The College Freshman who does not go out for some sport misses a splendid opportunity to become acquainted with outstanding men of the campus, and to distinguish himself through participation in athletic contests. Freshmen making a team are awarded numerals and certificates.

In addition to Freshman and Varsity athletics there are interclass competitions, both for the men and for the women, and intramural sports controlled by the Intramural A. A. and supervised by the Director of Physical Education. A trophy is provided in these intramural contests.

The, but slightly altered, undefeated and untied football team of last year under the skillful tutelage of Coach Yunevich should make a good showing against the stiffer competition of this year's schedule. Night football will be continued for all home games this season.

Basketball also should be an outstanding sport feature, when last year's team augmented by recruits from a top-notch freshman squad takes the court against some of the stiffest competition in the East.

Cross-country is one of the most outstanding sports at Alfred as Alfred University has been a consistent winner in the State Conference championships and has

shown up creditably in the Middle Atlantic.

Track, also, has been successful, three State Conference titles having been captured and the team has been well toward the top in Middle Atlantic Conference rating.

The wrestling team was fairly successful last year and aided by several promising sophomores should have a good season. A large Senior class representation will deplete the ranks so freshmen are urged to come out for this sport.

Tennis and golf include University tournaments and matches with outside teams. More active interest in these matches will make them outstanding sport events.

ELIGIBILITY RULES

1. In order to be eligible to play on Athletic teams, a student must be regularly enrolled in one of the four college courses, or as a special student, and must take a minimum of sixteen semester hours per week, doing full work in a regular course as defined in the curriculum.

2. In order to be eligible to play on Athletic teams, a student must have attained in the last official index, a minimum index of 0.50. But those made ineligible by semester grades may be made eligible by mid-semester grades. In case of Freshmen eligibility will be lost at mid-semester by any individual whose index falls below 0.50. Immediately after every official index, those persons whose index is below 0.50 may have two weeks in which to raise the index to the necessary 0.50 before being dropped from the team. An official index is taken immediately after the close of each semester.

3. No student shall participate in inter-collegiate games until he shall have been in attendance for one full collegiate year subsequent to attaining the equivalent of Freshman rank in the College of Liberal Arts or in the College of Ceramics.

4. No student shall participate in inter-collegiate games for more than three years in the aggregate, and any member of the team who plays in any part of an inter-collegiate athletic contest does thereby participate in Athletics for the year.

5. No student shall play in any game under an assumed name.

6. A student who participates in Inter-collegiate Athletics and does not complete the work of that semester shall not be permitted to compete in the same sport in his next year of residence.

7. No member of the faculty of Alfred University shall participate in any inter-collegiate or inter-scholastic contest.

8. The Junior Varsity shall consist of only those men who have regularly participated in practice against the varsity. The second team shall be under the jurisdiction of the coach, and no group of men other than the above stated shall represent the University in any form of athletics.

GENERAL REGULATIONS

1. The coach shall have complete jurisdiction of the team in all matters of conduct. He shall be required to suspend from the team, for a time commensurate with the offence, any person guilty of immoral, ungentlemanly, or unsportsmanlike conduct.

2. The Coach will report to the Committee on Absences immediately after an out-of-town game the names of the students, who have participated in the contest, and the time when they left Alfred and when they returned to Alfred. This information

is for the use of the Committee on Absences.

3. No body of students exceeding four in number (two in basket ball) shall take part in any games played out of town, outside of the regular schedule approved by the athletic committee.

4. Match games shall not be played on either Saturday or Sunday except by special permission of the President.

5. No more than one game of basketball, baseball, or football shall be played in any one week, except when the team can profitably play a series of games on any one trip away from home. Extra games may be played on days when classes are not in session. (See rules 2 and 3).

6. The Administration permits the following teams to make schedules: football team, women's basketball team, men's basketball team, track teams, tennis team, cross-country teams, wrestling team, and golf team.

THE ATHLETIC GOVERNING BOARD

ARTICLE I—NAME

The name of this committee is the Alfred University Athletic Governing Board.

ARTICLE II—MEMBERSHIP

The following constitutes the membership of the committee:

Athletic Director
Managers of all sports
Assistant Coaches
Chairman Committee on Athletics
(Board of Trustees)
Chairman Committee on Athletics
(Faculty)

President Athletic Association
Secretary Athletic Association

Two Alumni to be selected annually by the committee.

ARTICLE III—OBJECT

Sec. 1. To finance all athletic events.

Sec. 2. To approve the schedules of all intercollegiate contests.

Sec. 3. To equip all teams, squads, and participants in athletics.

Sec. 4. To sanction all insignia, honors and prizes recommended by the coaches in their respective (field) sports.

Sec. 5. Generally to act in advisory capacity to the director of athletics and coaches.

ARTICLE IV—OFFICERS

The officers of the committee are:

- (1) Chairman (Director of Athletics)
- (2) Vice Chairman (Assistant Director)
- (3) Secretary (Secretary of Athletic Association).

ARTICLE V—DUTIES OF OFFICERS

Sec. 1. The chairman shall:

(a) Preside at the meetings of the committee.

(b) Have immediate and personal supervision over all the details in connection with the athletic events of the University.

(c) Be invested with the authority necessary to represent the committee in emergencies.

Sec. 2. The vice-chairman shall in the absence of the chairman preside at the meetings.

Sec. 3. The secretary shall keep complete records of all the proceedings at the meetings and shall notify members of the committee of a regular or special meeting.

ARTICLE VI—MEETINGS

Sec. 1. The first meeting of the school year shall occur on the second Tuesday

following the opening of the fall semester in the office of the Director of Athletics at 7:00 P. M.

Sec. 2. There shall be a monthly meeting in the office of the graduate manager at a time decided upon by the committee at its first meeting.

Sec. 3. A special meeting may be called at the direction of the chairman or the request of six members of the committee.

ARTICLE VII—QUORUM

Ten members including either the chairman or vice-chairman shall constitute a quorum.

ARTICLE VIII—CHANGE OF CONSTITUTION

An affirmative vote of two-thirds the total membership at a regular meeting shall be required to change the constitution, the change having been proposed at a preceding meeting.

THE ATHLETIC ASSOCIATION

1938-39 Officers

President—Raymond Buckley

Secretary—Lyle Perkins

ARTICLE I—NAME

Section 1. The name of this organization is the Alfred University Athletic Association.

ARTICLE II—OBJECT

Section 1. The object of the association is the physical development of men and women through games, contests, and athletics.

Section 2. To promote athletic contests between scholastic and collegiate institutions.

Section 3. To raise funds for the promotion of such enterprises.

ARTICLE III—MEMBERSHIP

Section 1. Any student of Alfred University paying the dues of the association becomes a member, eligible to vote in matters of business and entitled to a seasonal pass to all home games under its auspices.

ARTICLE IV—OFFICERS

Section 1. President and Secretary elected by the student body.

Section 2. The Director of Athletics shall be bonded to the Association to the extent of \$500, and may receive such remuneration as may be approved by the Advisory Board.

Section 3. A student manager for each sport who shall be a Senior.

Section 4. Two assistant managers for each sport who shall be Juniors.

Section 5. A student manager for each Freshman sport who shall be a Senior.

Section 6. A head trainer who shall be a Junior with two Sophomore assistants.

ARTICLE V—DUTIES OF OFFICERS

Section 1. The Director of Athletics:

Shall be a member of the association and subject to the articles of the constitution.

Shall submit to the Athletic Association and the Alumni Advisory Board at the end of each term a complete financial statement and inventory on all property, making account for any loss or wear of equipment.

Shall have charge of all departmental equipment deposited with him and shall surrender it to the various managers on a regular account basis each season.

Shall arrange with the various Coaches schedules for intercollegiate and interscholastic contests.

Shall be accountable to the governing board and the Alumni Advisory Board for all debts incurred by the association.

Section 2. The President:

Shall preside at all meetings of the association.

Shall call meetings of the association provided they be given reasonable advance publicity. Then association members may call a meeting by a signed notice, posted 36 hours prior to the time specified.

Shall act as ex-officio member of the governing board.

Shall call and preside at pep meetings as occasion demands.

Section 3. The secretary:

Shall keep the records of the association.

Shall act as ex-officio member of the governing board and as secretary of that organization.

Section 4. The student managers:

Shall act as assistants to the graduate or faculty manager either upon his request or during his absence.

Shall work under the direction of the coach in his particular sport in supervising practice, trips, and games; and be responsible to the graduate or faculty manager for all equipment allotted for his sport.

Shall govern the activities of his two assistants and all candidates for the position.

Section 5. The assistant managers:

Shall operate under the direction of their manager.

Section 6. The Freshman manager:

Shall have duties the same as the Varsity manager in his particular field.

Section 7. The cheerleader and assistants:

Shall have charge of the student conduct at all Varsity athletic contests. Freshman

candidates for the position shall assume the same responsibility at Freshman contests.

Shall have charge of the training of all candidates for the position.

Section 8. The trainer and assistants:

Shall have charge of all medical supplies and training paraphernalia supplied by the graduate manager.

Shall act at the coach's direction in the performance of the trainer's work.

ARTICLE VI—WOMEN'S ATHLETICS

Section 1. Major sports for women shall consist of Hockey, Basketball and Archery.

Section 2. Minor sports for women shall consist of Tennis, Indoor Base Ball, Volley Ball, Swimming, and Hiking.

Section 3. There shall be an upperclass Student Manager for each of the Major sports.

(a) Duties of the Managers:

1. Shall be responsible to the Women's Athletic Director for the administration of the sport.

2. Shall meet class captains of the sport for the purpose of explaining respective duties.

3. Shall give to the respective class captains their record books in which shall be kept attendance and training.

4. Shall notify the Women's Athletic Director of the number of points obtained by each person in her sport.

Section 4. Points shall be awarded in the following manner:

1. Major Sports

a. Class team membership, 5 points

b. Championship team membership, 7 points

c. All-Alfred team membership, 10 points

2. Minor Sports

a. Hiking, Swimming. Any girl participating in 75% of the activity shall receive 1 point

b. Tennis. Any girl after an elimination tournament, representing her class in singles or doubles competition shall receive 2 points. Winning her event, 3 points.

c. Volley Ball, Baseball. Girls representing their class teams, 3 points. Girls on the championship teams, 5 points.

3. If a girl in any one year scores honors in two major sports, she shall be limited to point credit to two minor sports for the year.

Section 5. Awards. Awards for women shall be an old English "A" (7 inch) and class numerals. Under special considerations, insignia may be awarded to an individual by the recommendation of the Coach and approved by the Board.

a. Class numerals may be worn in the first resident year by the accumulation of ten points under the present point system.

b. The old English "A" shall be given to all those girls who shall earn 50 points in Athletics.

Upon recommendation by the Women's Athletic Governing Board, the Athletic Association shall at the first meeting of the year present approved standard blazers to all Senior women who have won their Varsity Old English "A".

ARTICLE VII—REGULATIONS GOVERNING MEN'S ATHLETICS

Section 1. Major sports for men are football, basketball, track, cross-country and wrestling. Tennis, boxing, fencing and golf are minor.

Section 2. Insignia for major sports shall be a 7-inch chenille "A" except that managers' and trainers' letters shall be designated by small M and small T attached to that letter.

Section 3. Insignia for minor sports shall be a 7-inch chenille block "A" with 3-inch block letters designating the sport on either side, except that managers shall have the small M attached as above

Section 4. To win a major "A" in football or basketball a person must play two-thirds of the actual playing time during a season. To win a major "A" in track a person must score at least nine (9) points during the season. Those points scored in the conference meet are to count double. To win a major "A" in cross-country a person must place in a meet won by Alfred or be a point-winning member of a team placing no less than third in a conference meet. To win a major "A" in wrestling a person must engage in one-half the meets and win at least one point in an intercollegiate wrestling contest.

Section 5. To win a minor "A" in tennis a person must engage in one-half the matches and win a singles match or pair in a winning doubles match in an intercollegiate tennis contest.

Section 6. Numerals shall be awarded for participation in Freshman sport or by Freshmen in a Varsity sport under the same regulations as govern Varsity awards in each sport.

ARTICLE VIII—BY-LAWS

Section 1. The dues of the association shall include the athletic fee collected by the administration on the semester bill and any special assessment voted by the association.

Section 2. Any person entitled to insignia shall receive a certificate designating authority to wear such insignia. The certificate shall be signed by the chairman of the faculty committee on athletics, the graduate or faculty manager, the coach, and the president of the association.

Section 3. Under special conditions, insignia may be awarded to an individual by recommendation of the coach and approval of the governing board.

Section 4. Managers, assistant managers, trainer, assistant trainers, and cheerleader, shall be elected by the governing board from such men and women as have been in competition for the position unless there is no candidate available when they may select from available prospects in the proper class.

Section 5. Major and minor letters shall be awarded managers, according to the classification of their sport; and to trainers with the designating letter attached.

Section 6. Upon recommendation by the governing board, the association shall present approved standard sweaters to all persons receiving their major "A" for the first time. Other awards may be voted team members by the governing board.

Section 7. The governing board, at the conclusion of each sport season, shall select manager, Freshman manager, and assistant managers for the coming season. Head cheerleader, trainer, assistant trainers shall be selected by the governing board at the final meeting of each school year.

Section 8. An amendment to this constitution may be made only by a two-thirds affirmative vote after publication of the proposed change in the Flat Lux.

CONSTITUTION WOMEN'S ATHLETIC GOVERNING BOARD

ARTICLE I—NAME

The name of the Committee shall be the Alfred University Women's Athletic Governing Board.

ARTICLE II—MEMBERSHIP

Section A. The following shall constitute the membership of the committee:

- The Athletic Director for Women
- One Faculty Adviser
- One representative from the Senior, Junior and Sophomore classes
- The President of Alpha Tau Theta
- The Senior Student Managers of the major sports for women.

Section B. Perpetuation of membership. The Board shall perpetuate itself by electing to membership at the regular meeting in May:

- The Faculty Adviser
- The representatives from the three classes.
- The Senior Student Managers

ARTICLE III—OBJECT

Section A. The object of the Board shall be to promote and supervise the athletic activities of the women of the University and to stimulate interest in all forms of exercise.

Section B. To approve all intra-mural contests.

Section C. To sanction all insignia, honors and prizes recommended by the coaches in their respective sports.

Section D. To finance all athletic events.

ARTICLE IV—OFFICERS

Section A. The officers of the committee shall be: Chairman, the Women's Athletic Director; Vice-chairman, the Faculty Adviser; Secretary, the President of Alpha Tau Theta.

ARTICLE V—DUTIES OF OFFICERS

Section A. The Chairman.

1. Shall preside at all meetings of the committee and shall have immediate and personal supervision over all the details in connection with the Women's Athletic events of the University.

2. Shall be invested with the authority to represent the Committee in the emergencies.

Section B. Vice-Chairman.

1. She shall in the absence of the chairman preside at the meeting.

Section C. Secretary.

1. She shall keep complete records of all the proceedings of the committee.

2. Shall notify all members of the date of meetings.

3. Shall attend to all correspondence necessary to the business of the Board.

4. Shall keep a record on file of all athletic records, winners of contests and intra-mural contests.

ARTICLE VI—MEETINGS

Section A. The first meeting of the school year shall occur on the Tuesday following the opening of the Fall Semester.

Section B. There shall be a monthly meeting at a time decided upon by the Board at the first meeting of the year.

Section C. A special meeting may be called by the chairman, or at the request of any three members.

ARTICLE VII—VOTING

Section A. Six members, including either the chairman or the vice-chairman shall constitute a quorum.

ARTICLE VIII—AWARDS

Section A. The Board shall sanction and approve all merited awards and shall recommend to the Athletic Association that the approved standard sweaters shall be presented at the first meeting of the year to all Senior women who have won the Varsity Old English "A".

ARTICLE IX—AMENDMENTS

Section A. The constitution may be amended by a quorum vote at any regular meeting.

Section B. The proposed amendment must be presented at the meeting previous to the meeting of voting.

INTERSCHOLASTIC DAY

For the last twenty-eight years, Alfred has held an Interscholastic track meet at which high schools from central and western New York and Pennsylvania have been represented. Greater interest is shown in this event each year and large crowds come a great distance to see the meet. All the principal field and track contests are held and also two prize speaking contests—one for men and one for women.

1938-39 ATHLETIC SCHEDULES

Varsity Football

- Sept. 24—Hartwick at Alfred
 Oct. 8—Ithaca College at Ithaca
 Oct. 15—Buffalo at Alfred
 Oct. 22—Susquehanna at Alfred
 Oct. 29—St. Lawrence at Alfred
 Nov. 5—Clarkson at Potsdam
 Nov. 12—Hofstra at Hempstead

Freshman Football

- Oct. 8—Cook Academy at Alfred
 Oct. 15—Buffalo, away
 Oct. 22—Scranton-Keystone Jr. College
 at La Plume
 Nov. 4—Manlius, away

Varsity Cross Country

- Oct. 8—Colgate at Alfred
 Oct. 15—Buffalo, away
 Oct. 22—Open
 Oct. 29—Manhattan away
 Nov. 5—Toronto at Alfred
 Nov. 12—Army, away
 Nov. 14—I. C. A. A. A.

Freshman Cross Country

This schedule was not made up when the handbook went to press.

Varsity Basketball

- Dec. 3—Hartwick at Alfred
 Dec. 10—McMaster at Alfred
 Dec. 14—Cornell at Ithaca
 Dec. 14—Cornell Junior Varsity at Ithaca
 Dec. 17—Springfield College at Alfred
 Jan. 7—Open
 Jan. 12—Lafayette, away
 Jan. 13—Lehigh, away

- Jan. 21—Ithaca College at Alfred
 Jan. 28—St. Bonaventure at Alfred
 Feb. 4—Niagara, away
 Feb. 7—Allegheny at Alfred
 Feb. 11—St. Bonaventure, away
 Feb. 17—Clarkson, away
 Feb. 18—St. Lawrence (afternoon 2:30)
 away
 Feb. 25—Bard at Alfred

Freshman Basketball

This schedule will not be made up until later in the fall.

Wrestling

- Feb. 9—Rochester Mechanics at Alfred
 Feb. 11—Colgate at Hamilton
 Feb. 18—Buffalo at Alfred
 Feb. 25—St. Lawrence (afternoon) at Alfred
 Mar. 4—Buffalo, away
 Springfield, tentative
 Waynesburg, tentative

Track

- Mar. 4—(Indoor) I. C. A. A. A.
 Mar. 31—(Indoor) Interclass
 May 6—Cortland at Alfred
 May 12-13—Middle Atlantic
 May 20—Syracuse, away
 May 27—Bucknell (tentative) at Lewisburg

VARSITY TRACK RECORDS

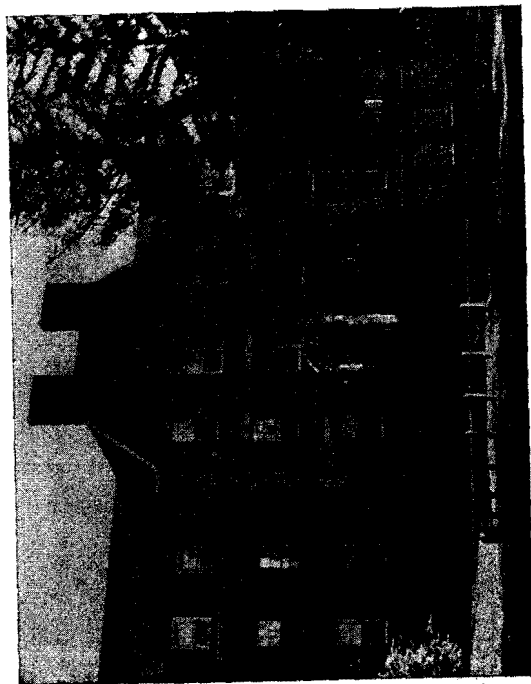
EVENT	HOLDER	RECORD	YEAR
100 yard dash	Newell Wallace '34.	10 seconds	1933
	Eric Hodges '36,		1934
	Howard Sephton '37		1935
220 yard dash	Newell Wallace '34	22 seconds	1934
	Eric Hodges '36		1936
440 yard dash	Newell Wallace '34	50.8 seconds	1934
880 yard run	Emil Zschiegner, Jr., '29	1 min. 56 sec.	1929
1 mile run	Wilbur Getz '29	4 min. 19 4/5 sec.	1929
1 mile relay	Dawson '37,		
	Giannasio '36,		1935
120 yard high hurdle	Minnick '36, Jones '37	3:30.8	1936
220 low hurdle	L. Schiffner '36	16	1935
Pole vault	L. Schiffner '36	25.3	1935
Running high jump	Charles Clark '35	12 ft. 10 1/4 in	1934
Running broad jump	Frank Park '38	5 ft. 10 1/4 inches	1937
16 lb. shot put	Joe Majeske '39	22 ft. 9 in.	1938
Discus	Sanford Arkin '39	44 ft. 6 in.	1938
Javelin	Jack Edleson '36	126 feet 3 inches	1935
2 mile run	Aaron Arnold '38	183 ft. 7 1/2 in.	1936
	Wilbur Getz '29	9 min. 43.2 sec.	1929

76

FRESHMAN RECORDS

EVENTS	HOLDER	RECORD	CLASS
100 yard dash	Frank Giannasio	10.1 seconds	1936
220 yard dash	Howard Sephton	23 seconds	1937
440 yard dash	Maynard Jones	51.8 seconds	1937
880 yard run	Frank Morley	2 min. 4.4 sec.	1941
1 mile run	Barnard Oldfield	4 min. 34 sec.	1935
1/2 mile Relay	John McConnell, Lewis		
	Graham, Burton Chubb,		
	Kenneth Robinson	1 min. 34 sec.	1932
1 mile relay	Martin Staiman, James		
	McFadden, Louis		
	Obourn, Frank Steele	3 min. 37 4/5 sec.	1931
120 yard high hurdles	Raymond Baschnagel	15 seconds	1937
220 yard low hurdles	Donald Bissell	28.8 seconds	1939
Pole vault	Charles Clark	11 ft. 6 in.	1935
Running high jump	John Halpin	5 ft. 9 1/2 in.	1940
Running broad jump	A. W. Stuart	21 ft. 4 in.	1929
12 lb. shot put	Sanford Arkin	49 ft. 4 in.	1939
Discus	Arthur Wells	118 ft. 7 in.	1937
Javelin	H. Glinesky	160 ft.	1941
4-5 mile relay	Morley, Gehrke, Burgess,		
	Lagasse,	2 min. 45.8 sec.	1941
2 mile run	Eugene Burgess	10 min. 8.4 sec.	1941
3/4 mile relay	Fleishman, Arkin,		
	Gardner. Martin	48.0 sec.	1939

77



The Brick

FRATERNITIES, SORORITIES, AND THE INDEPENDENTS

FRATERNITIES

Officers, 1938-39

Kappa Psi Upsilon

President—Martin Dykeman
Vice-President—Lloyd Angell
Secretary—Russell Pardee
Treasurer—Alfred Nutt

Theta Kappa Nu

President—Jack Eagan
Oracle—Robert Molyneux
Secretary—Robert Woodruff
Treasurer—Don Blissell

Klan Alpine

President—Kenneth Tracey
Vice-President—Richard Loomis
Secretary—William Gillespie
Treasurer—George Batley

Delta Sigma Phi

President—Daniel Sparler
Vice-President—Howard Cowan
Secretary—Henry Bangert
Treasurer—Robert Beers

Kappa Nu

President—Irving Hirshfield
Vice-President—Harold Edelson
Secretary—Seymour Fleischman
Treasurer—Leon Lerman

INTERFRATERNITY COUNCIL

1938-39 Officers

President—Henry Bangert, Delta Sigma Phi
Vice-President—Leonard Ruhenstein, Kappa Nu
Secretary—Martin Dykeman, Kappa Psi
Upsilon
Treasurer—George Batley, Klan Alpine

CONSTITUTION

We, the men's fraternal organizations of Alfred University, in order to promote harmony and mutual understanding among the fraternities on the campus; to act as an interpreting medium between the faculty and the allied organizations on the campus of the University; to lay and enforce rules for governing all situations of common interest to the fraternities, do hereby adopt and agree to be governed by the following Constitution and By-laws.

ART. I.—NAME AND OBJECT

Sec. 1. The name of this organization shall be "The Interfraternity Council of Alfred University."

Sec. 2. The object of this organization shall be to control and regulate all matters that may be determined to be of mutual interest to the various organizations herein represented.

ART. II.—MEMBERSHIP

Sec. 1. The council shall be composed of two representatives who are members of either of the two upper classes (Junior and Senior) from each member organization.

Sec. 2. Each fraternity shall be entitled to one vote in any meeting of the Council.

Sec. 3. Any new fraternity organized on the campus, upon approval by the faculty, must become a member organization of the Council.

Sec. 4. Representatives shall be elected during the first week of May, and shall act as an observing body in the remaining Council meetings of that year.

Sec. 5. By May 15, each fraternity shall purchase a bond of \$100 from the University Bank, said bond to be renewed by April 15 of each succeeding year. Failure to renew this membership by any member fraternity shall result in its forfeiture to the Interfraternity Council.

Sec. 6. Any member organization of the Interfraternity Council choosing to withdraw shall automatically forfeit its membership bond.

ART. III.—OFFICERS AND DUTIES

Sec. 1. Officers shall be elected at the final meeting of the Council.

Sec. 2. The officers of the Council shall be a President, a Vice-president, a Secretary and a Treasurer.

Sec. 3. The duties of the officers shall be in general those pertaining to their respective offices by parliamentary custom.

Sec. 4. The Secretary shall furnish a copy of the minutes of each meeting of the Council to each member fraternity by the Monday following the night on which the meeting is held.

Sec. 5. The Treasurer shall pay out money only by the direction of the Council.

Sec. 6. The President shall be required to call a meeting of the Council the second and fourth Wednesday nights of each month of the college year.

ART. IV.—TRIBUNAL

Part 1. *Membership.*

Sec. 1. There shall be a tribunal composed of a faculty member from each fraternity represented on the Interfraternity Council and a faculty member who is not a member of any Alfred fraternity, who shall act as chairman of the tribunal.

Sec. 2. Each fraternity shall select its representative to the tribunal during the first week in May.

Sec. 3. The Interfraternity Council shall elect the non-fraternity member.

Sec. 4. The members of the tribunal shall serve for one year unless re-elected.

Part 2. *Powers*

Sec. 1. The tribunal shall be a final court of appeal in all matters, and may be appealed to by any member fraternity of the Council.

Sec. 2. The tribunal shall have the power to impose all penalties.

Part 3. *Conduct Bonds.*

Sec. 1. There shall also be purchased and maintained a bond of \$50 for conduct offenses, the nature and magnitude to be determined by the tribunal.

Sec. 2. All fines shall be payable to the tribunal which in turn shall be given to the treasurer of the Interfraternity Council.

ART. V.—PLEDGING

Sec. 1. Kappa Nu shall be exempt from all rushing and bidding rules in the Interfraternity Council. This provision shall hold unless another Jewish fraternity should be formed. In that event all fraternities shall come under the ruling of the Council.

Sec. 2. No man shall have a pledge pin in his possession until pledged according to the by-laws of this constitution, nor shall he be considered pledged until he wears a pledge pin in the proper place, or has signified in writing his intentions of joining a given fraternity.

Sec. 3. No fraternity shall bid or pledge a man who matriculates the first semester until he has attended Alfred University through one closed season.

No fraternity shall pledge an eligible man who matriculates the second semester until he has attended through one closed season.

Sec. 4. *Rushing Rules.*

a. Closed season shall be defined as the period from the beginning of college instruction in the fall until the Wednesday that all bids are returned to the respective fraternities, six weeks after college has formally begun instruction.

b. (1) During a closed season no eligible man is allowed in a fraternity house except for the time allotted each Monday, Wednesday and Friday evenings, and Saturday afternoons and evenings.

(2) During the closed season no fraternity shall be allowed to entertain more than five eligible men on Monday and Wednesday nights from 5:30 until 11:00.

(3) On Friday night of closed season from 7 until 12 P. M. each fraternity shall be allowed to entertain one-fourth of the eligible men selected by Article V. Not more than twenty cents per eligible man may be spent in entertaining the men.

c. On Saturday afternoons from 1:30 to 7 each fraternity may entertain ten men, and on the days of the home football games these ten men may be entertained from 1:30 P. M. until 12:00 P. M.

d. Representatives from each fraternity must meet at least four days before the first Friday of rushing and divide the eligible men into four equal groups or as nearly equal as possible, which shall be guests at the different fraternities on successive Friday nights. (That is, each group shall visit each house at least once.)

Sec. 5. Pledging shall be subject to the following rules:

a. On the morning after the last rush party, each eligible man shall receive a preferential card from a clerk appointed by the Council which must be filled out and returned by the 6 o'clock mail that same night. On or before 6 p. m. of this same night, each fraternity must have in the hands of the clerk a list of the eligible men they will accept as pledges.

b. Each house shall be limited to 17 freshmen preferentials.

c. Each house shall be permitted to maintain 17 men in each class; a man's class to be considered the one with which he is connected upon entrance.

d. Honorary members shall be exempt from the quota but may not be pledged until the conclusion of the regular rushing season.

e. A list of all bona fide pledges must be posted by the clerk of the Council by 10 a. m. of the following Wednesday morning immediately after the closed season has terminated.

f. All eligible men must be in their place of residence from 7 p. m. to 8 p. m. the Tuesday evening after bids are sent in.

g. Silent period shall extend from the last Friday of rushing at midnight until Saturday at 6 p. m. Silent period is limited to merely saying "Hello" to an eligible man and prohibits the association of fraternity men in any manner whatever with eligible men.

h. The first four weeks of school shall be a non-rushing period, during which time Freshmen are forbidden to enter into or on fraternity property.

i. There shall be a closed season from the Wednesday after pledging until one week from the following Thursday at 6 p. m. After this time there shall be unlimited rushing.

j. Any house may pledge any eligible man other than a Freshman at any time. An eligible man is defined as any man who has never been connected with a fraternity and has been through one closed season, or a man who *has* been connected with a fraternity and has been through a closed season since depledging.

k. Each fraternity must charge its pledges at least \$9 yearly fee, and may charge any amount over that if it sees fit to do so.

Sec. 6. a. No rush party or part of a rush party shall be held in the home of, or sponsored by, an alumnus, honorary, or active member of a fraternity. No *Eligible Man* shall room or board in any

fraternity house until he has been pledged by the fraternity. No fraternity shall approach any man when he has been pledged to another fraternity or has signified in writing his intention of being pledged.

b. Any fraternity which solicits the membership of any man in a manner which shall be considered unusual or unfraternal shall have committed a misdemeanor requiring judicial action by the tribunal.

c. No fraternity shall pledge a man who has worn the pledge pin of another fraternity of this council until the next rushing season. If a man should have a pledge pin taken from him, the council shall be informed by the fraternity whose pin he wore, and the circumstances concerning his case.

ART. VI.—INITIATION

Sec. 1. No man shall be formally initiated into any fraternity until he has attained an index of 1. for his first semester, or any subsequent official index.

Sec. 2. After a man has been initiated into a fraternity represented on this council he is not eligible for membership in any other fraternity during his stay in Alfred.

ART. VII

Sec. 1. All motions pertaining to reprimands, penalties, suspensions and expulsions shall be carried by a two-thirds vote.

Sec. 2. All amendments shall be carried by a unanimous vote.

ART. VIII

Sec. 1. These rules shall be subject to revision at the first March meeting of the Council, at which time all proposals of change shall be presented. All revisions must be completed before the second meeting in April.

Delta Sigma Phi
Kappa Nu
Kappa Psi Upsilon
Klan Alpine
Theta Kappa Nu

FRATERNITY RUSHING

Rushing season is a difficult time for Freshmen. It is then you will need all your common sense. Snap judgments are easy to make, but often lead you into paths of action from which it may be difficult to withdraw.

Remember that a fraternity is only a small part of college and that a man has just as much chance to make a name for himself in college whether he belongs to a fraternity or not. Don't allow the alluring promises of fraternity to blind you to actual realities.

During rushing season the Freshman is, for the moment, the object of very special attention. Don't be led to think that the treatment you receive will be continued for your special benefit the rest of the year. Try to discern the real character of the group and the individuals. Try to decide for yourself which fraternity you really care for most, and where you will make the best friends, where you will fit best. Remember you will be bound up with your group for your whole college career.

Remember that each fraternity has its good and its poor qualities. Discriminate, and choose the fraternity that has the greatest common interest for you in every way.

If you favor a particular one and it does not rush you, but you are rushed by some other, think carefully before you decide to join or not. It might be better to wait.

Beware of the "Mudslinger." Don't let others do your choosing for you. This includes your Freshman friends.

SORORITIES

Officers, 1938-39

Pi Alpha Pi

President—Eleanor Hargrave
Secretary—Betty Jacox
Treasurer—

Josephine Sill, Norma Witschieben

Sigma Chi

President—Marian Immediato
Vice-President—Kay Borman
Secretary—Nancilu Butler
Treasurer—Jane Uffert

Theta Chi

President—Rosemary Hallenbeck
Treasurer—Irma Komfort
Chaplain—Eileen Davis
Social Chairman—Beatrice Collins

INTERSORORITY COUNCIL

1938-39 Officers

President—Dorothy Wilson, Sigma Chi
Secretary-Treasurer—Irma Komfort, Theta Chi

Other Members—

Virginia Plummer, Pi Alpha
Ogareta Ehret, Pi Alpha
Rebecca Vail, Sigma Chi
Alice Flannigan, Theta Chi

Art. I. NAME AND OBJECT—Sec. 1. The name of this organization shall be the Women's Intersorority Council of Alfred University.

Sec. 2. The object of this organization shall be to control all matters which may be determined to be of interest to the various organizations herein represented.

Art. II. MEMBERSHIP—Sec. 1. The council shall be composed of two representatives from each woman's fraternity, at least one of whom shall have served previously.

Sec. 2. Each representative shall be entitled to one vote in each council meeting, except the President who votes only in case of tie.

Sec. 3. Any new woman's fraternity on the campus, being recognized by the faculty, automatically becomes a member of the council, after signing the Constitution.

Art. III. OFFICERS AND DUTIES. Sec. 1. The officers shall consist of a President, who shall be a Senior and a Secretary-treasurer.

Sec. 2. The officers of the Council shall be elected at the last meeting of the college year, when the old and new Councils

shall meet together. The new Council alone shall have power to vote at this election.

Art. IV. POWERS—The Council shall have power to enforce all enactments, regulations, etc., within its jurisdiction as defined by the articles and by-laws of this constitution.

Art. V. RUSHING—Sec. 1. A Rushee is defined as meaning a Freshman woman or transfer.

Sec. 2. Rushing Season:

(a) There shall be a *closed* period of the first semester. At the end of this time rushing shall be done in an open period.

(b) *Open* period shall be the first two weeks of the second semester.

(c) *Closed* season shall include only all informal, inexpensive entertainment and shall exclude any formal entertaining, entailing expense, and shall exclude all rushing at the houses except on Saturday afternoons, arrangements for which shall be made by the council. There shall be no entertainment for a sorority by a resident active member, an honorary, or an alumna.

(d) During closed season sorority girls are allowed to visit rushees at the Brick or in their residence as an opportunity for the sororities to acquaint themselves with the Freshman group.

(e) *Open* season shall include entertainment, with expense, at the houses, to be arranged by the council during closed season.

(f) Honorary members may be invited to the house at the times of entertaining the Freshmen.

(g) Sorority girls may not take rushees to their homes with them.

(h) All rules apply to vacation as well as to the school session.

Art. VI. BIDDING AND PLEDGING—Sec. 1. A bulletin will be issued with the rules of preferential bidding stated. To this bulletin shall be added a financial statement denoting the living expenses of each sorority, including price of room, board and dues. This shall be read at a meeting of "rushees" just before bids are sent out.

Sec. 2. Bidding shall be done by the preferential system in the fall.

Sec. 3. Upon receiving preferential slip a "rushee" shall make her decision for a sorority in absolute secrecy.

Sec. 4. Silence shall last from the time bids are sent out until they are accepted.

Sec. 5. Silence is defined as merely saying "hello."

Sec. 6. Sororities shall not be discussed with "rushees."

Sec. 7. A disinterested person to act as Clerk to the Council. (The duties shall be defined by the Council.)

Sec. 8. No one shall consult the clerk during bidding except in vote of the Council.

Sec. 9. All problems of bidding shall be dealt with by the Council.

Sec. 10. The clerk together with the council shall call a meeting of all rushees on a Monday night at the end of the two week period. At this meeting preference slips shall be given to such rushees as whose names appear on the preference lists of the sororities previously submitted to the clerk. These slips are marked, signed and handed to the clerk at this time.

Sec. 11. Bidding of honorary members shall take place after Christmas recess.

Art. VII. INITIATION—Sec. 1. Each fraternity shall determine the date of its initiation services.

Sec. 2. No woman shall be formally initiated into any fraternity until she has attained an index of 1.0.

Sec. 3. After a woman has been initiated into a fraternity represented on this Council, she is not eligible for membership in any other fraternity represented on this Council during her stay in Alfred.

Art. VIII. VOTING—Sec. 1. All voting shall be done by secret ballot unless otherwise designated.

Sec. 2. All matters pertaining to reprimand, penalties, suspension and expulsion shall be carried by a 2-3 majority vote.

Art. IX. MISDEMEANORS—Sec. 1. Any fraternity member who belittles, or attempts to belittle or degrade any other fraternity in the eyes of any person by word or action, shall be considered as having committed a misdemeanor requiring judicial action by the Council.

Sec. 2. If a sorority woman has broken a council rule, she shall have a hearing with the council, in which the two representatives of that sorority shall have a hearing; then the other four Council members, together with the disinterested person, shall decide the punishment unanimously.

Sec. 3. Any sorority or any of its members breaking a rule of the council shall be penalized as a house, such penalty to be decided by the council.

Art. X. RESIGNATION—No representative shall resign without the consent of the Council and her fraternity.

Art. XI. MEETINGS—Special meetings may be called at any time by the President, the Secretary-treasurer or by the decision of three members.

Art. XII. AMENDMENTS—Sec. 1. Amendments to this constitution may be suggested by any fraternity. The Council may vote upon it at any time after it has been submitted to the fraternities.

Sec. 2. All amendments to be carried must receive unanimous vote of the Council.

INDEPENDENT GROUP

Officers 1938-39

President—Joe Proe
Secretary—Margaret Lawrence
Six Board Members—

Seniors—

Lula Johnson, Seymour Smigrod

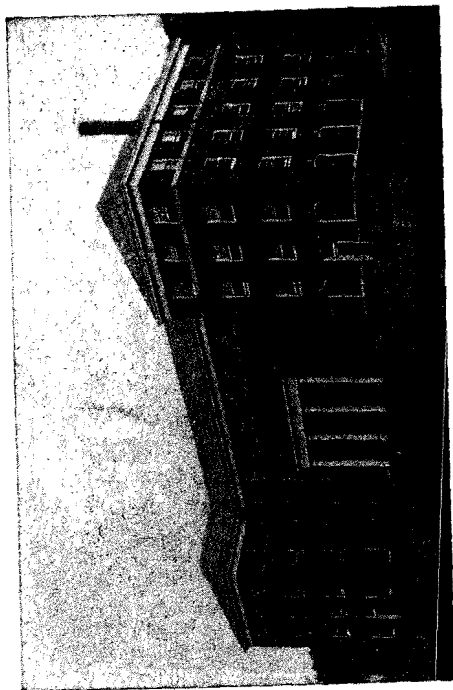
Juniors—

Blanche Field, James Thomas

Sophomores—

Eleanor Driscoll, James Hollingsworth

The Independent Group has recently been organized. The purpose of its organization was to get the non-fraternity and non-sorority students together so that they might have some sort of social contact in this University. Dances are to be planned for this year and years to come. There will be some sort of annual ball.



Bartlett Hall

CLUBS AND HONORARY SOCIETIES

AMERICAN CERAMIC SOCIETY

1938-39 Officers

President—Joe Proe
 Vice-President—Lucius Washburn
 Secretary—Martin Dykeman
 Treasurer—Jullus Siegel

An organization for all the students enrolled in the General Ceramic Engineering and Glass Technology courses and a national organization for all the leading men in the Ceramic Industry. The purpose of the student group is to bring a closer relationship between the student and the Industry.

Several important men in the field are attractions for some of the meetings of the year. Last year, Dr. Hall, research engineer of Onondaga Pottery Co. and Mr. L. I. Shaw, research engineer for the Western Electric Co. spoke to the Society.

Each year the seniors of the Ceramic College feature the annual St. Patrick's Festival, at which time some outstanding senior is chosen to represent St. Pat, the patron saint of all engineers. Two days of festivity mark this affair which is climaxed by the grand ball at which the campus queen is crowned.

CERAMIC GUILD

Officers

President—Dorothy Wilson
 Vice-President—Sanford Arkin
 Secretary—Margaret Diehl
 Treasurer—Rene Richtmeyer

An organization for the Ceramic Art students. It was organized to give experience and stimulate interest in commercial methods of pottery making. Members are chosen from the junior and senior art students whose work and interest qualifies them. Some of the proceeds from annual sales are retained by the members, the freshmen and sophomores working gratis.

MATHEMATICS CLUB

The Math. Club is a newly formed organization on Alfred's campus designed to promote an acquaintance with topics not ordinarily presented in classroom study. The Club was fortunate in having some interesting lectures by members of the faculty and outside speakers.

FORENSIC SOCIETY

The Forensic Society in conjunction with other colleges changed its program last year due to the New York Constitutional convention. Emphasis was on prepared talks and discussions on important public issues relative to the Constitutional convention rather than on intercollegiate debating. Two or three debates were had.

ASTRONOMY CLUB

President—James Tate
Faculty Adviser—Professor Ross

The Astronomy Club is a newly organized club, having been formed by students in astronomy wishing to learn more of the universe beyond the range of the naked eye. Meetings at intervals provide students with the opportunity of "star gazing" and discussions of the interesting phases of the universe about us. Occasional trips are made to nearby observatories.

INTERNATIONAL RELATIONS CLUB

President—Dighton Polan
Advisers—Dean Drake and Dr. Russell

The International Relations Club is an active group on the campus, holding frequent discussions of important national and international questions. It is affiliated with the Carnegie Foundation of Peace.

Varsity "A" CLUB

The Varsity "A" Club was formed in the interest of bigger and better athletics and the promotion of true fellowship among athletes. The club is composed of those athletes who have been duly voted a certificate for varsity athletics and are furthermore awarded the "Varsity "A" sweaters for this achievement. The most important purpose of the club is to promote athletics in Alfred, and create principles of true sportsmanship.

DEUTSCHER VEREIN (German Club)

Officers

President—Annemarie Lustig
Vice-President—Daniel Freed
Secretary-Treasurer—Ogareta Ehret
Faculty Adviser—
Professor Kaspar O. Myrvaagnes

Membership in the German Club is offered to all students interested in German. The club meets semi-monthly, offering an opportunity to students of gaining a more comprehensive knowledge of German and Germany through conversation, games, talks, readings, slides, and motion pictures.

SODALITAS LATINA
(Latin Club)

Officers

President—Marian Immediato
Vice-President—Lillian Sweeney
Secretary-Treasurer—Mary Bernadine Eberl
Faculty Adviser—Dr. G. Stewart Nease

The Latin Club is an organization to furnish those students interested in Latin a further opportunity of learning the customs of the Roman people and of relating these to modern life. The meetings, held monthly, are partly social and partly educational.

LE FLEUR DE LIS
(French Club)

Officers

President—Mary Bernardine Eberl
Historian—Ronald Bald
Secretary—Concetta Russo
Treasurer—Annemarie Lustig
Faculty Advisers—

Miss Eva L. Ford and Miss Marie Louise Cheval

The Fleur de Lis is a student organization formed for the purpose of attaining greater fluency in the speaking of French. The club plans an extensive "French Week Program" in the spring and sponsors French movies during the year. At the bi-weekly meetings, members often present papers on appropriate topics. Membership is open to all French majors.

FOOTLIGHT CLUB AND THETA ALPHA PHI

Officers

President—Robert Beers
Vice-President—Margaret Chester

Secretary—Mildred Wesp
Business Manager—Rosemary Hallenbeck
Publicity Manager—William Dermody

The Footlight Club and Theta Alpha Phi is an organization to promote the best in dramatic production. Its members are chosen from those who show the most ability for acting or stage production. Try-out plays are held the first part of each college year, and every year the club chooses and presents two full length plays

BLUE KEY

1938-39 Officers

President—Robert Molyneux
Vice-President—Joe Proe
Secretary—Ray Buckley
Treasurer—James Tate
Faculty Adviser—Chaplain McLeod

The Blue Key is an honorary fraternity composed of upperclassmen, recognized for their character, scholarship, student activities, leadership, and spirit of service on the campus. As a service organization, the Blue Key welcomes visiting groups on the campus, arranges intramural athletic contests, and performs other services as occasion arises. The Freshman Court, now reorganized, is under the jurisdiction of the Blue Key in connection with the Student Senate.

ALPHA TAU THETA

1938-39 Officers

President—Winnie Winikus
Vice-President and Secretary—
Virginia Plummer

It is an honorary athletic fraternity for women of Alfred. Its aims are the development of loyalty to the ideals of true

sportsmanship and the recognition and emphasis of worthwhile achievements in sportsmanship and leadership. This organization cannot include in its members more than one-tenth of the women of the student body and these members must maintain an index of 1. The director of athletics for women is always an associate member.

KERAMOS

1938-39 Officers

President—William Knapp
Vice-President—Willis Lawrence
Secretary—Donald Tucker
Treasurer—Wesley Weidman

Keramos is the National Professional Engineering Fraternity. Its membership is composed of students from ceramic colleges throughout the country, and men particularly prominent in the field of ceramics. The principal object of the fraternity is to promote and emphasize scholarship and character in the thoughts of the ceramic students, to stimulate mental achievement, and to promote interest in ceramic engineering. Membership is based on scholastic record and interest in ceramics and is the highest honor a student engineer can attain.

ETA MU ALPHA

Eta Mu Alpha, honorary scholastic fraternity on Alfred's campus, has for its goal the promotion of better scholarship and keener interest in things intellectual among the student body of the University. Only Juniors with an accumulative index of 2.4 and Seniors with one of 2.2 are eligible for this honor.

PHI SIGMA GAMMA

1938-39 Officers

President—Kay Borman
Secretary-Treasurer—Rosemary Hallenbeck

Phi Sigma Gamma, the women's honorary fraternity of Alfred, was founded in 1925 to provide an incentive for achievement among the women students of the university. The organization aims "to be a positive factor in Alfred's growth, to maintain and extend a spirit of co-operation and good will between fraternity and non-fraternity groups, and to uphold true Alfred ideals and express these ideals in service to Alfred." To this end, each year, are elected to membership those women who have best expressed these ideals by outstanding loyalty to the university, personal character, scholarship and service. Eligibility is limited to twenty-five of the women of the two upper classes.

SPIKED SHOE

1938-39 Officer

President—Lyle Perkins

The Spiked Shoe is a branch of the National Collegiate Society of Spiked Shoe which is for the promotion of track and cross country. The purpose of this organization is to bring together in a closer bond all those interested in track and cross-country and to this end, the members may be chosen, not only from among letter men but also from among those whose main interest is track and cross country. This society fosters interclass and intramural track meets, and incites interest in sub-collegiate institution, and to further the aims of track and cross country by serving as officials for meets among undergraduates and High Schools.

PI GAMMA MU

1938-39 Officers

President—John Dougherty
Vice-President—Dighton Polan

The national honorary social science fraternity was brought to the campus in 1927 to awaken interest and encourage underclass study in the field of social science. Membership includes a limited number of the faculty and upperclass members who must have an average index of 1.5 and 20 hours of study in the social sciences.

PHI PSI OMEGA

The aim of this honorary fraternity is to recognize men for their scholastic record, athletic ability, character and loyalty to Alfred. It is hoped that through striving to gain membership in this organization the high ideals of Alfred will be maintained.

CLASS OFFICERS FOR 1938-39

Seniors

President—Raymond Buckley
Vice-President—Irving Hirschfield
Secretary—Beatrice Collins
Treasurer—John Norwood

Juniors

President—Blanche Field
Vice-President—William Fellows
Secretary—Elizabeth Curtis
Treasurer—Harold Edleson

Sophomores

President—Robert Whitwood
Vice-President—John Trowbridge
Secretary—William Lawton
Treasurer—Bruce McGill

ALFRED UNIVERSITY FORUM

Established in 1935, the forum annually brings to Alfred some of the leading speakers, writers, musicians, and other entertainers of the day. The Forum for 1938-39 includes the following:

Marjorie Hillis: author of "Live Alone and Like It", and "Orchids on Your Budget", formerly associate editor of "Vogue" will speak about her experiences as a "Brand New Editor".

Sheldon Cheney: author of "A World History of Art", "Expressionism in Art", founder and former editor of "Theatre Arts Monthly" will speak on "Modernism in the Arts".

John Strachey: former Labor Member of Parliament and author of "The Coming Struggle for Power", "The Menace of Fascism" will speak on "Capitalism, Socialism, Communism-Defined".

Lottie Goslar: known as Europe's greatest dancing mime; she will present "Dances From Life" which are now being held in America as the outstanding performances of their kind.

The Master Singers:

Seven men who give a variety program with popular and classical music. They have been heard over the radio. Last year, they appeared before the University Assembly.

Single admission \$1.00

Season tickets \$2.50

Tickets will be on sale during the summer in the Library and the President's office. Tickets will also be on sale Registration Day in the Treasurer's office, or may be obtained from Kathryn Borman or Chaplain J. C. McLeod, co-chairmen, and at the desk in the University Library.

STUDENT PUBLICATIONS

THE FIAT LUX is the University paper, published weekly during the college year by a board of editors chosen by competition from the students. An editor-in-chief, usually a Senior elected by the staff, administers the policy of the paper in consultation with that body. Each college student automatically subscribes to the Fiat Lux when he matriculates, the cost of his subscription being included in the semester bill.

Editor-in-chief—John L. Dougherty, Jr., '39
Business Manager—Bernard Spiro, '39

The KANAKADEA is the Alfred University yearbook, and contains a record of the activities of all four classes during the college year at the end of which it is published. Editor and business manager of the KANAKADEA are elected by the staff from competing upperclassmen with previous experience on the book. Subordinate positions—class editors, literary assistants, and many others—are chosen by the editors from all four classes. Each Alfred student subscribes to the KANAKADEA on matriculation.

Editor-in-chief—Leonard Rubenstein, '39
Business Manager—Harold Nadel, '39

The SAXONIAN is the college quarterly magazine, and is literary or comic depending upon the nature of material submitted. Editors and business managers of the SAXONIAN are elected from the staff by the staff. Any student may become a contri-

butor or business assistant. Copies of the SAXONIAN sell for 25 cents.

Editor-in-chief—Rosemary Hallenbeck, '39
Business Manager—Joe Nutter, '41

All three Alfred publications are edited in the Publications Office, first floor of Burdick Hall.

MUSIC

MALE GLEE CLUB is a group of sixteen men directed by Prof. Ray W. Wingate, the positions being competitive. Besides day trips to neighboring towns, the club makes an extended concert tour including New York City during spring recess.

WOMEN'S GLEE CLUB under the direction of Mrs. John Reed Spicer is also on a competitive basis. Short trips to near-by towns and several local concerts make up the year's work.

UNIVERSITY BAND, directed by W. O. Marvin is open to all who play band instruments. Local concerts and short trips, besides the usual performances at pep rallies and football games, are included in plans for next year.

UNIVERSITY ORCHESTRA is also on a competitive basis with home recitals scheduled.

UNION UNIVERSITY CHOIR is directed by Mrs. Ramon Reynolds. Try-outs are held at the beginning of the year for those who desire to join. Special Christmas music is the big feature in the choir program for each year.

SEVENTH DAY BAPTIST CHOIR, under the leadership of Ray W. Wingate, furnishes music for Sabbath day services.

UNIVERSITY FACULTY DIRECTORY

* Indicates that this Professor is head of his respective department.

Charles R. Amberg, B. S., M. S. (1929)
Professor of Ceramic Engineering
(Office—*New Ceramic Building*)

Alva John Clarence Bond, A. M., B. D.,
D. D. (1935)
Dean School of Theology
English Bible, Philosophy of Religion,
and Practical Theology
(Office—*Gothic*)

Harold O. Boraas, A. B., A. M., Ph. D.
(1927)
Associate Professor of Education
(Office—*Hall of Physics*)

*Charles D. Buchanan, A. B., A. M., Ph. D.
(1930)
Professor of German
(Office—*Alumni Hall*)

*Harold O. Burdick, A. B., A. M. (1931)
Professor of Biology, Curator of Museum
(Office—*Laboratory Hall*)

Wendell M. Burditt, B. S., A. M. (1929)
Associate Professor of English and
Journalism
(Office—*Alumni Hall*)

Robert M. Campbell, B. S. (1933)
Professor of Ceramic Technology
(Office—*Binns Hall*)

†Marie Louise Cheval, A. B., M. A. (1931)
Assistant Professor of Romance Languages
(Office—*Kenyon Memorial Hall*)

† On leave of absence, 1938-39

Lavinia E. Creighton, B. S. (1936)
Director of Physical Education for
Women
(Office—*Gymnasium*)

A. Burdet Crofoot, B. S. (1936)
Instructor in English
(Office—*Green Block*)

Boothe C. Davis, A. M., Ph. D., D. D. (1895-
1933)
President-Emeritus
(Office—*Green Block*)

*Dora K. Degen, Ph. B., A. M. (1925)
Dean of Women
Professor of English Bible and Religious
Education
(Office—*Green Block*)

*M. Ellis Drake, A. M., Ph. D. (1926)
Dean of Men
Charles Potter Professor of History and
Political Science
(Office—*Kanakader Hall*)

*Beulah N. Ellis, A. B., A. M. (1923)
Professor of English
(Office—*Alumni Hall*)

*Eva L. Ford, A. B., A. M. (1928)
Professor of Romance Languages
(Office—*Kenyon Memorial Hall*)

Marion L. Fosdick (1915)
Assistant Professor of Ceramic Art
(Office—*Binns Hall*)

Alfred T. Goble, B. A., Ph. D. (1937)
Assistant Professor of Physics
(Office—*Hall of Physics*)

Ruth P. Greene, A. B., B. L. S. (1929)
Librarian
(Office—*Carnegie Library*)

Walter L. Greene, A. B., B. D., D. D. (1926)
Professor of Church History, School of
Theology
(Office—*Gothic*)

*Charles M. Harder (1927)
Professor of Ceramic Art
(Office—*New Ceramic Building*)

Harold C. Harrison, B. S.
Assistant Professor of Chemistry
(Office—*Binns Hall*)

*E. Fritjof Hildebrand, S. B., A. M. (1922)
George B. Rogers Professor of Industrial
Mechanics
(Office—*Shop Building*)

*Major E. Holmes, A. M., Ph. D. (1932)
Dean, New York State College of Ceramics
(Office—*New Ceramic Building*)

Frank E. Lobaugh, B. S. (1932)
Assistant Professor of Ceramic Engi-
neering
(Office—*Binns Hall*)

*Raymond H. Lounsbury, B. A., M. A., Ph. D.
(1937)
George W. Rosebush Professor of Eco-
nomics
(Office—*Alumni Hall*)

Lloyd L. Lowenstein, B. A., Ph. D. (1937)
Assistant Professor of Mathematics
(Office—*Hall of Physics*)

Everett E. Lund, B. S., M. A., Ph. D. (1937)
Assistant Professor of Biology
(Office—*Allen Laboratory*)

William O. Marvin (1938)
Assistant in Music

James A. McLane, B. P. E. (1928)
Director of Physical Education and of
Athletics, Associate Professor of
Physical Education
(Office—*Gymnasium*)

James C. McLeod, A. B., B. D. (1929)
Chaplain
Student Pastor and Director of Religious
Activities
(Office—*Kenyon Memorial Hall*)

Clarence W. Merritt, B. S. (1925)
Assistant Professor of Ceramic Engineer-
ing
(Office—*Binns Hall*)

Hazel M. Miller (1938)
Instructor of Romance Language
(Office—*Kenyon Memorial Hall*)

Kaspar O. Myrvagnes, A. M., Ph. D. (1933)
Assistant Professor of German
(Office—*Alumni Hall*)

*G. Stewart Nease, A. M., Ph. D. (1930)
Wm. C. and Ida F. Kenyon Professor of
Latin and Wm. B. Maxson Professor of
Greek
(Office—*Kenyon Memorial Hall*)

Clara K. Nelson (1921)
Assistant Professor of Drawing
(Office—*New Ceramic Building*)

J. Nelson Norwood, A. M., Ph. D. (1910)
President
(Office—*Carnegie Library*)

L. Ray Polan, A. B., M. S. (1931)
Assistant Professor of Mathematics
(Office—*Hall of Physics*)

Sylvester S. Powell, A. B., A. M., B. D.
(1937)
Professor of Biblical Languages, School
of Theology
(Office—Crandall Hall)

*Clifford M. Potter, M. S. (1919)
Babcock Professor of Physics
(Office—Hall of Physics)

*Murray J. Rice, A. M., Ph. D. (1927)
Professor of Chemistry in New York
State College of Ceramics
(Office—Binns Hall)

Elbert W. Ringo, A. B., A. M. (1934)
Assistant Professor of Romance Lan-
guages
(Office—Kenyon Memorial Hall)

*Fred W. Ross, B. S., M. S., Ph. D. (1926)
Professor of Botany and Geology
(Office—Kenyon Memorial Hall)

Willis C. Russell, A. M., Ph. D. (1934)
Assistant Professor of History and
Political Science
(Office—Kanakadea Hall)

Anna May Ryno, B. S. (1933)
Assistant Librarian
(Office—Carnegie Library)

*Paul C. Saunders, M. S., Ph. D. (1924)
Professor of Chemistry
(Office—Laboratory Hall)

*Samuel R. Scholes, A. B., Ph. D. (1932)
Professor of Glass Technology and Di-
rector of the Glass Laboratory
(Office—New Ceramic Building)

Donald Schreckengost (1935)
Professor of Ceramic Design
(Office—New Ceramic Building)

Ada Becker Seidlin (1920)
Professor of Pianoforte
(Office—Home)

*Joseph Seidlin, M. S., A. M., Ph. D. (1920)
Professor of Education
Director of Bureau of Appointments
(Office—Hall of Physics)

George B. Shaw, D. D. (1938)
Professor of English Bible
(Office—Gothic)

C. Duryea Smith, B. A., M. A. (1937)
Instructor in Public Speaking and
Dramatics
(Office—Green Block)

John R. Spicer, A. B., A. M. (1935)
Assistant Professor of English
Counsellor to Prospective Students
(Office—Green Block)

*Waldo A. Titsworth, A. M., M. S., Sc. D.
(1912)
Registrar
Professor of Mathematics
Director of Summer School
(Office—Kanakadea Hall)

Lelia E. Tupper, A. M. (1926)
Assistant Professor of English
(Office—Green Block)

Edgar D. Van Horn, A. M., D. D. (1927)
Professor of Theology and Social Science
School of Theology

Lloyd R. Watson, A. M., Ph. D. (1931)
Professor of Chemistry
(Office—Laboratory Hall)

David W. Weaver, B. S., M. S. (1930)
Assistant Professor of Chemistry
(Office—Laboratory Hall)

*Alfred E. Whitford, A. M., Sc. D. (1932)
Dean of the College of Liberal Arts
Stephen Babcock Professor of Higher
Mathematics
(Office—Hall of Physics)

Leland E. Williams, B. S., A. M. (1920)
Assistant Professor of Industrial Me-
chanics
(Office—Hall of Physics)

*Ray W. Wingate (1912)
Professor of Music
(Office—Green Block)

Alex Yunevich, B. P. E. (1937)
Head Coach of Athletics
(Office—Gymnasium)

GRADUATE ASSISTANTS

Raymond L. Alty, B. S. (1937)
Physics

Daniel Minnick, B. S. (1937)
Physical Education

W. Varick Nevins III, B. S. (1937)
Mathematics

Rae Whitney, B. S. (1938)
Biology

OFFICE DIRECTORY

J. Nelson Norwood, M. A., Ph. D. (1910)
President
(Office—Carnegie Library)

Curtis F. Randolph (1910)
Treasurer of the University
(Office—Carnegie Library)

Burton B. Crandall, A. M., M. B. A. (1930)
Assistant Treasurer
(Office—Carnegie Library)

R. O. Hitchcock, M. D. (1927)
University Physician
(Office—Home, Clawson Infirmary)

Lydia Conover, R. N. (1927)
Supt. Clawson Infirmary
(Office—Clawson Infirmary)

Ruth A. Rogers, Ph. B. (1926)
Assistant to the Treasurer
(Office—Carnegie Library)

Lucile B. Knapp, B. S. (1930)
Secretary to the President
(Office—Carnegie Library)

Helen Taylor (1928)
Secretary to the Treasurer
(Office—Carnegie Library)

Irene C. Post (1932)
Secretary to the Treasurer
(Office—Carnegie Library)

Roberta B. Mower, B. S. (1938)
Secretary to the Registrar
(Office—Kanakadea Hall)

Ruth D. Whitford, B. S. (1928)
Corresponding Secretary of the Alumni
Association
Secretary to Mr. Spicer
(Office—Green Block)

Alice Niederhauser (1937)
Secretary to the Dean, New York State
College of Ceramics
(Office—New Ceramic Building)

Marian C. Gardiner, B. S. (1934)
Secretary to the Deans

Katharine S. Titsworth, B. A. (1937)
Assistant in the Offices of the President
and Registrar

COLLEGE CALENDAR, 1937-38

First Semester

1938

Entrance examinations Mon., Sept. 19
 Registration for Seniors, Juniors and
 Sophomores Mon., Tues., Sept. 19, 20
 Freshman Week Tues., Wed., Sept. 20, 21
 Instruction begins Thurs., Sept. 22
 Thanksgiving recess begins
 Wed., 10 A. M., Nov. 23

THANKSGIVING RECESS

Instruction resumed, Mon., 8 A. M., Nov. 28
 Founders' Day Mon., Dec. 5
 Christmas recess begins
 Wed., 10 A. M., Dec. 21

CHRISTMAS RECESS

1939

Instruction resumed
 Thurs., 8 A. M., Jan. 5
 Mid-Year examinations begin Wed., Jan. 25
 Semester ends Fri., Feb. 3

Second Semester

Registration of new students Tues., Feb. 7
 Instruction begins Wed., Feb. 8

SPRING RECESS

Memorial Day—half holiday Tues., May 30
 Final examinations begin Wed., May 31
 Senior examinations end Fri., June 2
 Final examinations end Fri., June 9
 One Hundred and Third Commencement,
 Sat., June 10 to Mon., June 12

COLLEGE SONGS AND CHEERS

ALMA MATER

Nestled away 'mid the Empire State hills,
 'Neath the watch-care of sentinel pines,
 Where the murmuring song of the brook
 hums along.

And a favoring sun ever shines;
 In a valley so fair where the forest trees
 share

Dominion o'er hillside and glen.
 Stands the pioneer college of Western New
 York—

Alfred, the mother of men.

—Chorus—

Hail to thee, Alfred, thou guide of our
 youth.

Sweet, benign mother, all hail!
 Sing out thy anthems of duty and truth:
 May thy clear ringing music ne'er fail.

She was founded in toil, cemented with
 blood,

And nurtured thro' yearnings and tears,
 Her treasure the hearts of brave heroes
 who stood

Undaunted throughout trying years:
 Each stone was a prayer and her battle-
 ments there

Have memories of purposes strong,
 Staunty daughters and sons are her mon-
 uments fair.

And they lift up the grateful song.

—Chorus—

Others may boast of prestige and size,
 Of numbers and treasure and fame
 But Alfred's pride lies in manhood's clear
 eyes,

And womanhood's high stainless name.
O Alfred, dear Alfred, thy fame will abide
With Kenyon and Allen and Main
With Davis the builder and Titsworth our
guide,
May Norwood her power maintain.

—Chorus—

OUR COLLEGE A. U.

Alfred's our college, hail Old A. U.
For the Varsity team give a cheer,
Each manly player so sturdy and true,
Fights on the team without fear,
Encourage each fellow to play a swift game.
And follow the ball best he can;
And when the foes of old Alfred draw nigh.
To fight for her prestige and fame.

—Chorus—

Come give a cheer for your College,
Root for old Alfred A. U.
Cheer her when she is victorious,
Ever be loyal and true.
Purple and Gold are her colors,
Loyal in spirit A. U.
Urge her men on to the victory,
To the praise and the fame of A. U.

Aye and forever, be loyal to her,
With the Varsity spirit let's sing.
Strong on the line up, and swift in the
backs,
Shout 'till the loud echoes ring—
With spirit and vigor for Alfred we'll cheer.
Your whole heart put into the game,
And when the foes of Old Alfred draw nigh
We'll fight for her prestige and fame.

—Chorus—

CHEER FOR ALFRED

We are out to cheer for Alfred,
We will help her win the day,
Make her gain athletic vict'ry,
By our shouts of ray! ray! ray!
Alfred, O!
Purple and the gold triumphant,
Waving 'neath a smiling sky,
Make us say we'll fight for Alfred
'Till the years have all rolled by.

SONG OF CITIES

Sing a song of cities, roll dem cotton bale,
Nigger ne'er so happy as when he's out of
jail.
Norfolk for its oysters, Boston for baked
beans,
Alfred for pretty girls, but for niggers
New Orleans.

—Chorus—

I've been working on the railroad, all the
live long day,
I've been working on the railroad just to
pass the time away,
Don't you hear the cap'n shouting; rise up
so early in the morn.
Don't you hear the darkies calling, Oh
Dinah, blow your horn?

Sing a song of colleges, tell you where to go,
Harvard for its knowledge, Cornell for a
row,
Princeton's wealth, or Amherst's pride, for
them naught do we care.
For old A. U. is strong and true, and for
her we'll do and dare.

—Chorus—

WE'RE PROUD INDEED

We're proud indeed of you football men,
Um, hum and a little bit more,
We cheer for you with all our might,
Um, hum and a little bit more.
Although we can't be very eloquent, we'll
tell you o'er and o'er,
We love you true, indeed we do.
Um, hum and a little bit
Hum, and a little bit
Um and a little bit more.

ON SAXON WARRIORS

On Saxon warriors,
The Purple and the Gold defend;
On Saxon warriors,
Ever on like men.
Crash thru the opponent's line
And victory will come our way
Fight, Fight for Alfred,
And she will win the day.

OH, HERE WE ARE

Oh, here we are! Oh, here we are!
You see us marching down the street.
You hear our cry: "To do or die,
We have the team that can't be beat.
We have!" (shouted)
So give a cheer, a lusty cheer,
And let the echoes carry true,
With a tramp, tramp, tramp,
And a stamp, stamp, stamp,
For the team of old A. U.!

SONG OF THE BELL

By the roaring, roaring banks
Of the old Kanakadea,
Oft I've lingered in the springtime long
ago;
While the waters rushed along,
And the hills took up the song;
And a gentle voice was calling sweet and
low.

—Chorus—

O, I hear the echoes ringing from the belfry
on the hill,
And the song inspires my heart to do and
dare;
Calling me to love and duty, calling me
to faith and prayer,
For the bell is ringing, ringing, ringing
still.

When the autumn days were on,
And a brilliant crimson show
Where the Alfred hill-side glory met the
sky.
Voices whispered in the breeze
While I sat beneath the trees,
And communed with master minds of
days gone by.

—Chorus—

O, the days of frost and snow;
O, the coasters' ruddy glow;
O, the evening's long delight with com-
rades dear,
When we talked on mighty themes,
Or indulged in happy dreams
Of our victories in the future hov'ring
near.

—Chorus—

Now my hair is turning gray,
 For those days have passed away
 But their mem'ry lingers sweet and
 sweeter yet;
 And my fireside's evening cheer
 Seems to bring old Alfred near,
 And the faces which my heart can ne'er
 forget.

—Chorus—

RAY RAY SONG

Way up in Allegany
 'Neath the shade of sheltering pines,
 There stands a little college
 That's for training noble minds,
 And when they get together
 On the gridiron, field or track,
 You hear the students give their yell
 And bring the victory back.

—Chorus—

Oh! Ray! Ray! Ray! Ray! Ray!
 Hear the students yell,
 Ray! Ray! Ray! Ray! Ray!
 Notes of victory tell,
 Oh! Ray! Ray! Ray! Ray! Ray!
 Better move along
 When you hear the students
 Sing their Ray! Ray! song.

Oh here's the little college
 That will help you do your best,
 Her girls are true, her men are strong,
 They always stand the test,
 And when they get together
 On the gridiron, field or track,
 They put their shoulders to the wheel,
 And bring the victory back.

—Chorus—

COLORS

Purple and Gold

YELLS

DOUBLE "A"

AL - - FRED AL - - FRED
 A - L - F - R - E - D
 AL - - FRED
 Team! Team! Team!

VARSITY

V - A - R - S - I - T - Y
 VAR - SI - TY VAR - SI - TY
 A - L - F - R - E - D
 AL - FRED
 Team! Team! Team!

TRIPLE "A"

A - A - A
 L - L - L
 F - F - F
 R - R - R
 E - E - E
 D - D - D
 AL - FRED AL - FRED AL - FRED
 Team! Team! Team!

SPLIT SECTION

A - - - - L
F - - - - R
E - - - - D
AL - - FRED AL - - FRED
Team! Team! Team!

LOCOMOTIVE

A - - L - - F - - R - - E - - D
A - L - F - R - E - D
A - L - F - R - E - D
Team - Team - Team

BEAT_____

Beat
Beat
Beat
Fight - Alfred - Fight
Fight - Alfred - Fight
Beat
Team! Team! Team!

TEAM YEA-TEAM

T-E-A-M Yea-Team
T-E-A-M Yea-Team
T-E-A-M Yea-Team

SAXON WARRIORS

Sa-xon War-riors Rah-Rah-Rah-Rah
Sax-on War-riors Clap-Clap-Clap-Clap
Sa-xon War-riors Rah-Rah-Rah-Rah
Sax-on War-riors Clap-Clap-Clap-Clap
Team

WE'RE OUT FOR GORE

We're out for gore
We're out for gore
For.....is the captain of our team
Let'er go, Let'er go, Let'er go
Let'er go!

RECITATIONS—FIRST SEMESTER

HOURS	MONDAY	TUESDAY	WEDNESDAY	THURSDAY	FRIDAY
8:00					
9:00					
CHAPEL EVERY DAY AT 10:00					
10:30					
11:30					
1:30					
2:30					
3:30					
4:30					

RECITATIONS—SECOND SEMESTER

HOURS	MONDAY	TUESDAY	WEDNESDAY	THURSDAY	FRIDAY
8:00					
9:00					
CHAPEL EVERY DAY AT 10:00					
10:30					
11:30					
1:30					
2:30					
3:30					
4:30					

