

ALFRED  
UNIVERSITY  
  
**HANDBOOK**

1940 - 1941

---

Presented by the  
  
Christian Associations  
of Alfred University  
  
to the  
  
Members of the Class of 1944

## INDEX

	Page
Administration Rules	
Assembly	30
Athletics	32
Attendance	28
Examinations	27
For Registering—Agricultural School	30
For Registering—College of Ceramics	25
For Registering—Liberal Arts	24
Library Regulations	31
Special Rules	32
Standings	26
Athletic Schedules	102
Class Officers for 1940-1941	130
Clubs and Honorary Societies	118
College Calendar for 1940-1941	80
Colors of Alfred University	142
Expenses, Suggestions Regarding Incidental	37
Faculty	67
Fraternities	105
Freshman Court	36
Freshman Rules	34
Greetings from the Christian Associations	9
Greetings from the President	8
Independent Group	118
Interfraternity Council	
Constitution	106
Rushing	112
Intersorority Council Constitution	114
Introduction to the 1940-41 Handbook	4

## INDEX

	Page
Men's Athletics	82
Governing Board	83
Intramural Association	89
Track Records	98
Music	134
Office Directory	75
Recitation Schedules	136-139
Religious Life	41
Church Services	44
Newman Club	43
Rules for Student Conduct	
At Examinations	33
Cheating	33
Infirmary Regulations	33
Songs	139
Sororities	113
Story of Alfred University	20
Student Christian Movement	10
A.U.C.A.	11
A.U.C.A. Constitution	14
Y.W.C.A.	10
Student Government	
Senate	45
Constitution	45
Senate of the Agricultural School	64
Student Life Committee	64
Student Publications	132
University Forum	131
Women's Athletics	
Athletic Association Constitution	93
Women's Student Government	53
Closing Hours	60
Constitution	53
Freshmen Regulations	59
Regulations in General	58
Yells	142

## INTRODUCTION

The Handbook of Alfred University is a publication that enjoys a long and distinguished record. It was first published a number of years ago with the idea of its being merely a "Freshman" Handbook containing rules, information, and statistics that would be of interest only to the freshmen. As time passed, the potentialities of the Handbook were more thoroughly realized, and as a result its store of information has been gradually enlarged until at the present time it occupies the unique position of being an "All University" Handbook, a directory of "Who's-What-in-Which", and the University's unofficial Year Book. Realizing what is expected of this publication, the editor has made every effort to see that it will continue to fulfill its purpose.

The Handbook this year is somewhat larger than it has been in previous years because of the addition of material pertinent to the students of the Agricultural School. It is a real pleasure to have them share this Handbook with the other institutions in the University, and there is no doubt but that this step will reap rich rewards in even greater cooperation and understanding among the four schools of the University.

The freshmen will find all of the material in the Handbook valuable to them, but there is also a great amount of information with which they should be particularly familiar. The Alma Mater should naturally be memorized by all new students as soon as possible, as should the school colors and school motto. The freshman men should give the Freshman Rules and the discussion of the Freshman Court their immediate attention. All new women should familiarize themselves with the sec-

Government, for in this section will be found the rules by which they will be governed during their years at Alfred. A careful study of the Administration Rules at the soonest possible convenience will prove advisable for all new students so that there will be no confusion later on concerning grade markings, absences, etc. Men and women who are interested in the fraternity and sorority situation at Alfred will find it advisable to look over the sections devoted to Fraternities, Sororities, the Interfraternity Council, and the Intersorority Council. Also, the freshmen cannot be urged too strongly to give the section headed "Suggestions Regarding Incidental Expenses" their most careful consideration.

In summarizing the last paragraph, the following may be said:

*All new students*—be familiar in a general way with the contents of this Handbook—

Know the Alma Mater, school colors, and school motto.

Study the Administration Rules.

Study "Suggestions Regarding Incidental Expenses".

*All new men*—know the Freshman Rules and the functioning of the Freshman Court.

Study the sections devoted to Fraternities and the Interfraternity Council.

*All new women*—know the contents of the section devoted to the Women's Student Government.

Study the sections devoted to Sororities and the Intersorority Council.

At first glance new students might possibly find the various regulations numerous and confusing. In practice, however, these regulations have proven to be quite lenient and easy to abide by. In the event that there is anything in the Handbook that you

fail to understand fully. DO NOT HESITATE TO HAVE IT EXPLAINED TO YOUR COMPLETE SATISFACTION. You will find the faculty members and upper classmen only too glad to assist you in every way possible in order that your orientation may be a pleasant, harmonious experience.

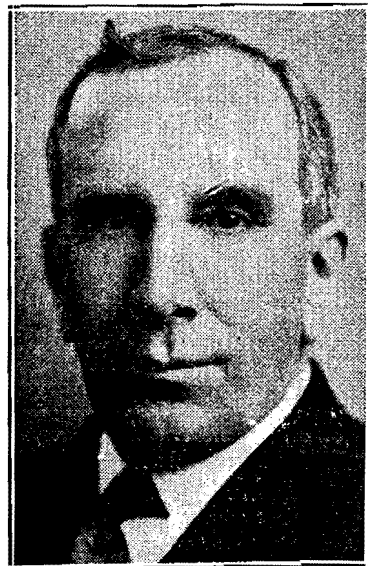
Of special interest to all students will be the schedule of athletic events for the year and the description of the new series of Forum programs that are to be held at the University.

As in previous years the Handbook contains a complete listing and description of clubs, honorary fraternities, and other organizations on the campus. In a great many instances the names of the current officers are given. Constitutions of organizations that have a direct bearing upon a majority of the students are to be found through-out the Handbook.

With this introduction the Alfred University Christian Association takes pleasure in presenting to the faculty and student body of Alfred University the 1940-1941 edition of the *University Handbook*, and it is hoped that this edition will fill a need that previous editions have filled so admirably.

THE EDITOR

June 27, 1940  
Alfred University  
Alfred, New York



J. Nelson Norwood, M.A., Ph.D., President

## TO THE CLASS OF 1944

Welcome :

It is, indeed, a pleasant task as the years roll by to welcome new classes to Alfred University. Your high school days are over and you are undertaking the adventure of college. I am glad that you have chosen Alfred as your school. I hope that you will like us and that Alfred will like you. In other words, I hope that you are the type of persons which this school can successfully lead in the attainment of real education.

I hope that you will have an enjoyable time here. Most students do. A touch of homesickness occasionally bothers one during these first weeks, but it is a disease never fatal and requiring the attention of no graduate of a medical college. I hope that the social life, the sports, the dramatics, the journalistic opportunities and other extra-classroom activities will claim their proper share of your time and interest. They are a real part of a well-rounded education.

I hope that you are getting into the right courses. If you are planning on engineering, art, teaching, business, social work, medicine, dentistry, law, or what-not, I hope you are fairly sure you are after what you really want. Now is the time to expend gray-matter on that issue. I welcome you to a lot of hard study and real intellectual growth.

I hope you will find many congenial spirits, and a very small circle of cronies. These cronies should be a very select group. They will largely determine certain types of your growth in college. If possible have a few who are a notch above you in standards and ideals. Remember that these friendships will in some cases last a lifetime. One of these friends may become your wife (or husband).

I hope you will plan to grow in right directions. You will grow, that is inevitable; that you cannot control. But how and toward what you grow is partly your business. I welcome you to the opportunity to grow into bigger and more worthwhile men and women. After all, whatever profession we may be studying to fill, we will have another supremely important job on our hands. We must not only know our business and acquire our needed skills to *do* something in life, but we must grow to *be* somebody. I welcome you to that task in this fine, old institution.

This year I take pleasure in offering a special welcome to the freshmen of the New York State School of Agriculture. The recent notable expansion of the curriculum, the additions to the instructional staff, the raising of entrance requirements, and the multifold increase in attendance have given your school a new place in the life of the University. May you all enjoy your courses, profit by and in all worthwhile ways be profitable to our whole educational program.

J. NELSON NORWOOD, President

## GREETINGS

To the Freshmen :

The Christian Associations of Alfred heartily welcome you to the activities on the Campus. They urge you to take an active part in the life of the University and to enter into the spirit and traditions which are characteristic of its growth and progress.

Especially do they invite you to share in the work of the Christian Associations, and, by so doing, make them a dynamic force for good, influencing the entire life on the Campus.

Anne A. Wasson, Pres. Y.W.C.A.  
Richard A. Humphrey, Pres. A.U.C.A.

## THE STUDENT CHRISTIAN MOVEMENT

Five years ago, the college Y.M.C.A. and Y.W.C.A. groups on various campuses throughout the United States, joined forces with the various church groups, and from their united efforts evolved the Student Christian Movement. In New York State this movement incorporates in its fellowship the students of all the colleges and normal schools. It is democratically directed by a council of representatives elected by the member college organizations and members-at-large who represent the church bodies; Young Men's and Young Women's Christian Associations and college departments of religion. The Movement maintains a staff of traveling secretaries whose services are available to all the colleges.

On the Alfred Campus are two such organizations: The Young Women's Christian Association, and the Alfred University Christian Association (the men's group).

### Y.W.C.A.

#### 1940-1941 Officers

President—Anne A. Wasson  
Vice-President—Sally Jane Morris  
Secretary—Elizabeth Olszowy  
Treasurer—Beatrice Nash

The Y.W.C.A. was organized forty-seven years ago and stated as its purpose "to unite in the desire to realize a full and creative life through a growing knowledge of God". This still remains the purpose of the organization although the activities and interests of the group have changed constantly through the years.

Meetings are held each Sunday evening during the college year at which various

individuals from faculty, student body and outside are invited to speak. Discussion groups have been sponsored and musicales held for the entire campus. They have been responsible through the years for many innovations to improve the relationships of the women on the campus, having successfully carried on the "Big and Little Sister" plan which more recently was taken over by the Women's Student Government. Likewise, each year this group sends representatives to intercollegiate conferences sponsored by the Student Christian Movement in N. Y. State. They have been regularly represented at the Silver Bay Conference, held in June of each year.

### A.U.C.A.

#### 1940-1941 Officers

President—Richard Humphrey  
Vice-President—Archibald Cameron  
Secretary—Alan Parks  
Treasurer—Frank Daiber

The A.U.C.A. had a long and honorable history of nearly half a century as the Y. M.C.A., changing its name to A.U.C.A. in 1930. Like most college organizations it has had both bright and dull years of life on the Alfred campus, depending very largely upon its student leadership. It once incorporated in its membership all men in the college but in more recent years has elected to its membership those men who were interested in giving a portion of their time to this extra-curricular activity.

The group meets twice a month and several times unites with the Y.W.C.A. in joint meetings on Sunday evening. With the development of the Student Christian Movement there is a growing tendency to make the projects of the two organizations co-operative and hence co-educational.

The A.U.C.A. has for its purpose to deepen the spiritual life of the campus and achieves this through co-operation in the various religious activities, such as the University Church, Chapel and the promotion of discussion groups.

Two years ago a new body was formed as an auxiliary group to the A.U.C.A. This was the Freshman Cabinet. This organization has its own activities, similar to those of the A.U.C.A., and elects its own members. Its purpose is to create an interest in the Christian Movement and to cultivate that interest by experience.

The A.U.C.A. also sends several representatives to various intercollegiate conferences including Silver Bay. It has sponsored the establishment of the Blue Key, aided in the reorganization of the Interfraternity Council, thus promoting better relationships between the men's groups, and recently sponsored through its membership the Alfred University Forum. From time to time groups of men from this organization have appeared as representatives of Inter-Faith Cooperation, at service clubs, church groups, and on the air.

During the coming year, plans have been made for Vesper services conducted by the two organizations, discussion groups on Sunday evenings and occasional smokers, at which there will be guest speakers.

Each year these groups have been responsible for bringing to the campus as Assembly speakers, such men as: Kirby Page, Sherwood Eddy, Paul Harris, Dr. T. Z. Koo, Mrs. Harper Sibley, Ray Sweetman, Secretary of the Student Christian Movement, and Miss Katherine Duffield of the same organization.

These two organizations of men and women on the Alfred University Campus,

through their affiliation with the Student Christian Movement, are likewise a part of the World's Student Christian Federation, which brings together twenty-three national student Christian movements enrolling more than three hundred thousand students and faculty members. Since its creation in 1895 the Federation has grown steadily and increased its influence, its spirit being undiminished by the World War. Today it stands out as one of the most potent influences for world harmony.

"In a world torn by war, class conflict, racial tensions, organized selfishness, nationalistic ambition and materialism, the World's Student Christian Federation dares to believe in a Christian World Community and works to create it."

Those students who make up the membership of the Y.W.C.A. and A.U.C.A. extend to the members of the entering class, a sincere invitation to join them in their united efforts to achieve this ideal.

# THE ALFRED UNIVERSITY

## CHRISTIAN ASSOCIATION

### CONSTITUTION

The name of this organization shall be:  
The Alfred University Christian Association.

#### ARTICLE I

Section 1. The administrative body of the Alfred University Christian Association shall be composed of the president, vice president, secretary, and treasurer, who shall be elected at the first meeting in May of each year. They shall assume duties of office immediately upon election.

Section 2. The duties of the officers shall be as follows:

The president shall preside at meetings and shall direct the activities of the organization. At the beginning of his term of office, he shall appoint the following:

Chairman of the committee on agenda.

Editor of the freshman handbook.

Chairman of the freshman reception

The vice-president shall preside at meetings in the absence of the president. He shall act as advisor to the Freshman Cabinet.

The secretary shall carry on all correspondence and keep a record of proceedings at all meetings.

The treasurer shall have charge of all funds and shall keep an accurate record of all receipts and expenditures.

Section 3. The college chaplain or director of religious activities shall be made ex-officio advisor to the organization.

#### ARTICLE II

Section 1. Membership: An active member shall be defined as one participating in the organization activities who has paid the usual fee of twenty-five cents each semester.

Section 2. Eligibility: All Alfred men professing belief in Christian ideals and principles shall be eligible to become members of the organization.

#### ARTICLE III.—FRESHMAN CABINET

Section 1. The freshman cabinet, which is headed by the vice president of this association, shall be organized at the beginning of each school year.

Section 2. The purpose of this body shall be to stimulate interest in Christian activities and to provide opportunities for participation in same.

This group shall function as an auxiliary body throughout the first semester. It shall elect suitable officers from its own numbers.

Section 3. There shall be an initiation ceremony at the first meeting of the second semester, at which time members of the freshman cabinet shall be adopted into the Alfred University Christian Association.

#### ARTICLE IV.—AMENDMENTS

This constitution may be amended provided the amendment is proposed at one meeting to be approved at the next meeting, by two-thirds of the members present.

#### ARTICLE V.—ADOPTION

This constitution shall become effective immediately following its approval by the administrative body and by two-thirds of the members present at any regular meeting.

Adopted May 23, 1939



## PLEDGE OF MEMBERSHIP

I believe that as a Christian student in Alfred University I should strive in my living to put God first, the other fellow second and myself third, and to evaluate life on the basis of what I believe to be a Christ-directed life, and do hereby resolve:

1. To maintain the highest possible standards of honesty in the classroom and in every other campus relationship; to give of my services to Alfred; and promise never to do anything on or off the campus that will discredit the name of my alma mater.

2. To consider my university training as fitting me for service to humanity and not merely for personal privilege and advancement.

3. To so live that the rich heritage which has come to me in the privileges of university life may be passed on to others with increased and not diminished value.

4. To seek to so develop, physically, mentally, socially and spiritually, that I may become an intelligent and willing participant, as leader or follower according to my talents, in the life of my community, state, nation and the world at large.

## COMMISSIONS IN THE A.U.C.A.

Every effort has been, and will be, made to assure each and every member of the A.U.C.A. the opportunity of serving the Association and the University in the field or fields that he is most interested in and best adapted for.

It has been found best to establish various commissions within the A.U.C.A. and to assign to each commission some definite service function. Each commission is headed by some capable member of the Association, and the chairmen are in turn assisted by other members of the A.U.C.A.

In this way every member is given the privilege of helping to further the work of the organization.

As a matter of interest, the commissions, the chairmen of the various commissions, and the functions of the various commissions are listed below:

### *Pre-College Conference Commission*

William G. Warr, Jr., Chairman

This group holds conferences with high school students and their parents to try to give them a better insight into college work and college life.

### *Deputations Commission*

Franklin P. Morley, Chairman

These men go out to churches in the vicinity that are holding services rather infrequently or not at all and try to assist them in becoming more active.

### *Orientation Commission*

Archibald D. Cameron and William B. Woods, Co-chairmen

We hope that you, the freshmen, have been helped by these men during your orientation week.

### *Campus Activities Commission*

Charles H. Rosenberg, Chairman

The duty of this group is to conduct the Thanksgiving dance and other functions of the A.U.C.A. which concern the campus as a whole.

### *Worship Commission*

William G. Warr, Jr., Chairman

This committee has the responsibility of planning for and helping to conduct certain chapel services throughout the year as

well as special services at Easter and similar occasions of special significance.

*Discussions Commission*

Herman Eichorn, Chairman

Lively discussions and open forums are planned for several times a month by this commission.

*Conferences Commission*

Alan H. Parks, Chairman

For the past several years Alfred University has taken a very active part in the various student conferences that have been held throughout the eastern part of the country. This commission prepares papers and resolutions for the Alfred representatives to present at these meetings.

*University Handbook Commission*

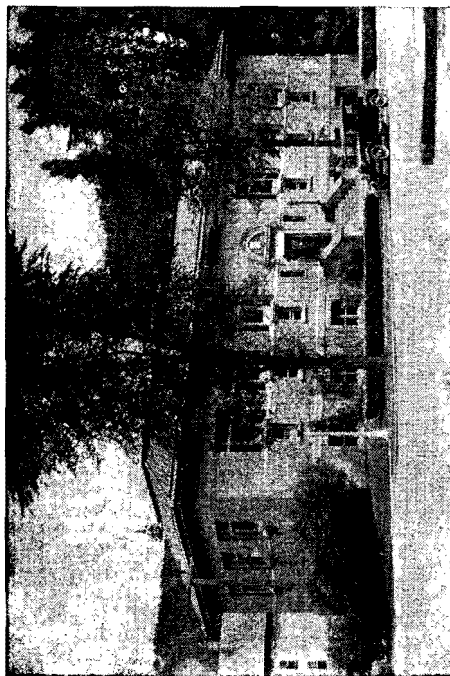
Paul Bruce Pettit, Editor

It is hoped that this, your Handbook, will speak for itself in describing the work done by this commission.

*Y.W.C.A. Relations Commission*

Alan H. Parks, Chairman

In an attempt to coordinate the activities of the A.U.C.A. and the Y.W.C.A. in as many ways as possible, the Y.W. Relations Commission has been established.



The Carnegie Library

## STORY OF ALFRED UNIVERSITY

To you young men and young women coming upon the campus of Old Alfred for the first time, coming to make yourselves Alfred's and Alfred yours; to you I say the questions will naturally arise: "How and when and why did Alfred University start," "What has it been?" "How has it become what we now see?" To be sure, there is a spirit and ideal here that you can learn about only by contact and experience with it; but glimpses at the story of its past can be given, which will aid you to learn of its spirit.

Just one hundred and four years ago the fifth day of next December, thirty-seven young people got together in an upper room in one of the eight or ten houses that made up Alfred Center, as it was then called, forming the select school, the seed of Alfred University. The teacher was a young man named Bethuel C. Church. He taught one winter, and was succeeded the second winter by a student from Union College, named James R. Irish. The school was already a success and people had said, "Go to, let us build a school building for our new school." This was done by the fall of 1837. The new building had 28 by 38 feet floor space and was ten feet high to the eaves. It was surmounted by a cupola which caused the students to dub it the "Horned Bug," but more dignified people called it "The Cadmus." It cost \$550.

In 1839, when Mr. Irish resigned, another Union student, Jonathan Allen, famous in Alfred history, took charge and gave his whole life to the building up of Alfred University. When the little select school was chartered as an academy in 1843, his

title became Principal, and when it asked in 1857 for a college charter, but got a university charter, his title was changed to President. He died in the presidential harness ten years later.

Although "The Cadmus" was enlarged still bigger ideas were incubating. A tract of forest land was bought on the lower slope of Pine Hill (perhaps you are sitting somewhere on it as you read this) and was slowly made to resemble a campus. By 1846, three new buildings appeared on the hillside. Lumber and labor were cheap, much of both was donated, so that the total cost of these structures was \$16,000. There was North Hall, a dormitory, which had a checkered career. It stood about where the Steinheim now stands. In 1868 it was sold to the school district and moved down to the present site of Kanaakadea Hall and used as a school house. But its "moving down" propensities had not disappeared, for it was acquired by a private individual and moved still further down the hill and fitted up as a hotel. This private individual was Mr. William C. Burdick, who, in 1896 allowed the University to use the building as a dormitory. Later his heirs gave it to the school. Have you guessed it? Yes, that's it, its present name is—Burdick Hall.

Then, there was old South Hall, a girls' dormitory. It stood where the Social Hall now is, and went up in smoke one cold February morning in 1858. Middle Hall, a boarding place, and a home for some of the teachers, stood on that old cellar site south of the Steinheim. Later it came to be the home of President Allen, and just after being wholly remodeled as a college dormitory, it was burned early in 1912.

Meantime the old Chapel (Alumni Hall, with the quill-pen weather vane), 1852, and

the Brick, 1859, so-called to mark its contrast with all the other buildings, which were of wood, appeared. In due time (1863-66) was completed the William A. Rogers Observatory (now taken down) introducing the name of one of the most famous men in the field of science Alfred has ever possessed.

When President William C. Kenyon ended his labors in 1867, all eyes turned to a member of the faculty, Jonathan Allen, as his logical successor. Professor Allen had been a student in that first select school, and like some of his classmates, had paid his tuition by chopping six cords of four foot wood. He shrank from the task imposed upon him by the trustees, but proved that they and other friends had been right in naming him president, for under his direction Alfred University prospered, and his influence spread far and wide in the land.

In 1879 the unique and beautiful structure called the Steinhelm was finished. It represented many things, including a Rhine castle, the geological formation hereabouts, and in its interior finish, many local woods. The building and its collections were bought by the University.

At President Allen's suggestion, a suitable monument to President Kenyon was erected (1882) in the beautiful Kenyon Memorial Hall. The Gothic was a faculty member's home, and was purchased by the University in 1875.

President Allen managed Alfred's affairs for an even quarter of a century, dying in 1892. The late Professor A. B. Kenyon, as acting-president for a year, and Dean Arthur E. Main as President for two years, brings our story to 1895, when President Davis began his long and successful service as builder of the New Alfred. Then came others of our familiar buildings: Bab-

cock Hall of Physics (1897) (burned in 1929), the Ceramic School (1900), Kankadea Hall (1908), the School of Agriculture (1909), the Carnegie Library (1912), the central heating plant (1917), Allen Memorial Laboratory (1923), Track and Field House (1929), Susan Howell Social Hall (1930), Bartlett Memorial Dormitory (1931), and the new Ceramic College building (1931). In November (1932), the Brick was largely destroyed by fire and remodeled in 1933. During 1934 the new Hall of Physics was completed. These buildings constitute the obvious Alfred of 1939. Again let it be remarked that knowledge of the inner Alfred—the soul of these buildings and campus—is a matter of slow growth in appreciation. Let me drop one hint. It is said that when South Hall was on fire in 1858, one of the loyal supporters of the school, accompanied by his wife, was riding to town in the old farm wagon. When the pair reached the crest of the hill west of the village and saw the flames and smoke, the wife exclaimed: "South Hall's afire! I see where I wear my old dress another year."

Incidents like this enable us to sense more vividly the meaning of a stanza of Alma Mater which runs:

"She was founded in toil, cemented with blood,  
And nurtured through yearnings and tears.  
Her treasure, the hearts of brave heroes  
who stood  
Undaunted throughout trying years.  
Each stone was a prayer and her battle-  
ments there,  
Have memories of purposes strong.  
Staunch daughters and sons are her monu-  
ments fair.  
And they lift up the grateful song."

1933 saw another important page written into the history of Alfred University.

The long term of President Davis came to a close (1895-1933) and Dr. Paul E. Titsworth was appointed to take his place. The school mourned the death of this truly great leader, a scant few months later. He made his short presence keenly felt and was loved by all those who were fortunate to know him. Dr. J. Nelson Norwood was appointed President in his place, and is undertaking to carry on the work of his illustrious predecessors.

In 1936, Alfred University celebrated the 100th anniversary of its founding. Highlights of the five-day Centennial celebration were a pageant, a Centennial convocation, and the 100th annual commencement. Many distinguished guests attended the celebration, among them Miss Frances Perkins, Secretary of Labor. The Centennial was preserved for future generations of Alfredians, on motion picture film.

## ADMINISTRATION RULES

### REGISTRATION RULES FOR THE COLLEGE OF LIBERAL ARTS

Students will register at the Registrar's office or the Library on registration days. A fee of five dollars (\$5.00) will be charged for late registration.

Students are expected to register for no more than 17 hours, but if a student has an average standing of B in the preceding semester he may register for 18 or more hours upon the approval of the Dean and Registrar.

Physical Training may be taken in addition to the maximum of 17 hours.

Regulations concerning standings to be maintained by students to entitle them to the privilege of registration without probation the following semester:

Freshman Year, first semester, no definite index. Second semester, 0.20.

Sophomore Year, first semester, 0.40. Second semester, 0.60.

Junior Year, first semester, 0.80. Second semester, 1.00.

Senior Year, first semester, 1.00. Second semester, 1.00.

For graduation it is required that a student have an average scholarship index throughout his course of 1.00.

All indices mentioned above are cumulative and are based on grades for the course thus far.

For complete details see the catalogue of the College of Liberal Arts.

Students desiring to drop a subject for which they have registered, must obtain permission from the instructor, and report to the Registrar's office.

No subject can be dropped after the first week of the semester without penalty. (See grade "W" below.)

### REGISTRATION RULES FOR THE COLLEGE OF CERAMICS

The procedure for registration in the Ceramic College is the same as that for the College of Liberal Arts and all the registration rules mentioned above hold equally for Liberal Art and Ceramic students except the regulations concerning standings to be maintained by students to entitle them to the privilege of registration the following semester. In the College of Ceramics they are as follows:

Freshmen are required to have an average scholastic index of 0.50.

Sophomores are required to have an average scholastic index of 0.75.

Juniors are required to have an average scholastic index of 0.85 at the end of the first semester and 1.00 at the end of the second semester.

Seniors are required to have an average scholastic index of 1.00.

A student, whose average cumulative index falls in a range between the average index mentioned above and an index of 0.50 less than that average index, shall be placed on probation for the following semester. If at the end of the probationary period the average cumulative scholastic index fails to come up to the requirement for his class he shall be dismissed for low scholarship.

A student, whose average index at the end of a semester falls below the range specified for probation, shall be dismissed because of low scholarship.

For further rules see the catalogue of the New York State College of Ceramics.

### STANDINGS

The standings of students are reported to them only by letters, and not by percentages.

"A" signifies excellent or superior work; "B" signifies good work or above the average; "C" signifies average or fair work; "D" signifies poor or unsatisfactory work, and is the lowest passing mark; "E" signifies conditioned failure which may be made up by re-examination, or other conditions imposed by the instructor; "I" signifies that work is unfinished; "W" signifies that course has been dropped; "F" signifies failure, which may be made up only by repeating the course in which the grade was received.

A condition or "E" grade shall be given whenever a student has failed to do work of a passing grade, but has done sufficient work to be able to complete the course without repeating the class work. A condition may be removed any time during the following semester. Upon report from the instructor that the condition has been removed, the office will change the grade from "E" to "D".

An *incomplete* (designated by the letter "I") shall be given to the student whose

work has been of passing grade but who has not completed the full amount of work required by the end of the semester. An incomplete may be removed during the following semester, when the student has satisfactorily completed the required work.

The grade "W" will be given to all students who drop a course after the first week of the semester and within two weeks prior to the beginning of final examinations providing the consent of the instructor and the Dean of the College is secured. If a student drops a course within two weeks of examination time, the final grade shall be "F". The "W" shall count as (-1) in determining an index. A student may be excused from these penalties by vote of the faculty for good and sufficient reasons.

When a student has failed to complete one-half of the work required in a course, the final grade will be "F" and not "I".

An incomplete or a condition which is not removed during the next following semester of residence in the college, shall automatically be changed in the office to a failure (F) grade.

### EXAMINATIONS

Final examinations are held at the close of each semester. Occasionally, written tests are held during the semester. Fees will be charged for all examinations taken by those not regular members of classes or for examinations or announced hour class tests taken at other times than those appointed. The fee for a special examination to take the place of a final examination is \$5. The fee for any special test to take the place of an announced one-hour class test is \$1.

When the student wishes to take a special examination or class test, he shall bring to the instructor a permit signed by the Dean of Women or Dean of Men. No special examination shall be given by an

instructor unless this permit has first been presented.

#### ATTENDANCE REGULATIONS

Sec. 1. Regular attendance at class exercises is expected. In the event of absence for any reason the student is expected to make up the work to the satisfaction of the Instructor. If, and when possible this arrangement should be made before the student absents himself from class.

Sec. 2. Excuses for absences will be granted for the following reasons only:

a. Necessary absence incurred by one representing the University on official business such as participation in athletics, dramatics, student conferences and debates, provided arrangement has previously been made with the Dean.

b. Illness, provided the student arranges with the University physician or infirmary superintendent, secures a satisfactory statement from the officials concerned and files same within one week after the absent period.

c. Serious illness at home or other imperative matters necessitating the student's absence, provided such absence is arranged for with the Dean within one week from the date of the absence.

Sec. 3. Absences per semester for each course may be permitted without penalty not to exceed the number of class exercises. Two tardinesses may be reported as an absence. No absence, however, may be taken by any student on the day immediately preceding or following any college recess.

Sec. 4. Seniors and Juniors who have a cumulative index of 1.25 or better and have not been previously disciplined for violation of rules limiting absences shall have the privilege of voluntary attendance at classes on days other than those which im-

mediately precede or follow any college recess. Seniors and Juniors with a cumulative index above 2.00 shall have the privilege of voluntary attendance regardless of previous disciplinary action. If in the opinion of the Dean this privilege is detrimental to the welfare of any student, that student shall forfeit this privilege.

#### Sec. 5. Penalties:

a. All students absent without excuse on the day next preceding or immediately following any college recess shall have their credit for that semester reduced an hour for each course in which the absence occurs.

b. Whenever any student, except those Seniors and Juniors who have the privilege of voluntary attendance, has reached the limit of absences permitted in any course this fact shall be reported by the Instructor to the Dean who will investigate and in the event of further absences shall use such disciplinary measures as may seem necessary.

c. If a student's physical condition, as indicated by the number of absences caused by chronic illness, is such that he is unable to do satisfactory work he may be required to withdraw from college.

Sec. 6. No excuses for any reason shall be granted for absences from assembly. Three absences from assembly per semester are allowed.

Sec. 7. Absence from any class on the first day of the semester shall be interpreted as late registration for which a fee of five dollars (\$5) is charged. Absences will be counted from the first session of the class at the beginning of the semester.

Sec. 8. These regulations are administered by the Deans whose decision is final.

# REGISTRATION RULES FOR THE SCHOOL OF AGRICULTURE

## Honor Points

A student for graduation must present a minimum of sixty-six honor points or one for each hour of required work. Not all subjects must be passed with honor point credit, but for each hour failed or passed at minimum grade, an equivalent number of hours must be passed with honors to offset the points lost. Assembly attendance (once weekly on Friday at eleven), is compulsory, and one honor point is deducted for each unexcused absence.

Equivalent letter grades and honor points are awarded to the following scale:

Quality	Honor points for each credit hour	Equivalent letter grades for transfer credit
Excellent	3	A
High	2	B
Average	1	C
Minimum	0	D
Incomplete	-1	E
Unsatisfactory	-2	F

The following minimum honor point requirements must be met for registration the following semester:

1st year, second semester	12, probation	9
2d year, first semester	27, probation	24
second semester	45, probation	42
graduation	66	

For complete details see the catalogue of the School of Agriculture.

## ASSEMBLY

On each Thursday morning at 11:00 o'clock there is an assembly for the Colleges of Liberal Arts and Ceramics, and on Friday at 11:00 for the School of Agriculture at which an address or entertainment is given. Attendance credit will be allowed provided absences do not exceed three for

the semester. *No excuses for assembly are granted.* Four semesters of attendance credit in assembly are required for graduation.

## LIBRARY REGULATIONS

1. Library Hours—The Library is open for regular work from 8:30 A. M., until 12:00 o'clock, and from 1:30 to 5:30 P. M., on week days. It is also open from 3:00 to 5:00 P. M., on Saturday and Sunday, and from 7:00 to 9:30 P. M., every evening except Thursday and Saturday, on these evenings it is open from 7:30 to 9:00 P. M. The Agricultural School reference library, where all books are classed as "Reserve Books", is open daily except Saturday from 8 to 5.

### 2. Loan of Books:

(1) Books may be retained two weeks with the privilege of renewal. (Current fiction may be retained for one week without the privilege of renewal).

(2) A fine of two cents a day, holidays included, will be imposed for all books overdue.

(3) Students whose fines are in arrears must settle the same before receiving their final standings at the end of each semester.

(4) Books are transferable on cards at the desk. Borrowers are not expected to pass books from one to another without making the transfer at the desk.

### 3. Reserve Books:

(1) Reserve books used in the library must be returned to the desk before leaving the room.

(2) Reserve books may be drawn from the library at 9 o'clock at night and must be returned not later than 10 o'clock the following morning. Failure to comply with this regulation on the part of any student will subject him to a fine of 25 cents. Continued failure to comply with the above regulation will result in loss of all library privileges.



(3) Reserve books drawn Friday must be returned Saturday afternoon at 3 o'clock, and those drawn Saturday night must be returned Sunday afternoon at 3 o'clock.

### ATHLETICS

All students, except those in the various technical courses of the School of Agriculture, unless excused by the University Physician are required to do one semester hour in physical training each semester during the freshman and sophomore years, under the supervision of the Director. The required work of the freshman year shall include lectures and gymnasium practice. Sophomores shall elect either advanced gymnasium practice or athletic sports supervised by the Department of Physical Education.

See Eligibility Rules.

### SPECIAL RULES

1. Any painting on the University buildings or any other University property is strictly forbidden. The classes as a whole will be penalized for any violation of the rule by any of its members.

2. All smoking in classrooms or in laboratory buildings is prohibited.

3. Smoking on the part of any college woman while under college jurisdiction is strictly forbidden, except in the rooms provided expressly for that purpose by the University.

4. The use of intoxicants by any student is forbidden. As a condition precedent to the students being accepted and remaining in the University, it is understood that the use, possession, or transportation of intoxicating liquors is forbidden. Violation of this rule of the University is sufficient cause to terminate a student's connection with the University.

## RULES FOR STUDENT CONDUCT

### AT EXAMINATIONS

1. All books, wraps, etc., not needed for the examination must be placed in the front of the room.

2. Any communication between students must go through a professor or proctor in charge.

3. The appearance of cheating must be avoided. Circumstantial evidence can lead to dismissal.

4. Heavy sweaters are not permitted at examinations of an hour or longer.

5. No blue books are to be taken from the examination room. (The proctor may permit question papers to be taken out.)

### CHEATING

Cheating in laboratories, tests and examinations will not be tolerated. The burden of proof will be on the student, who must avoid even the appearance of cheating. Individual instructors will handle cases of cheating as they see fit. Every effort will be made to see that every dishonest student is so labeled in letters of recommendation.

### INFIRMARY REGULATIONS

1. Office hours at the Infirmary every morning at 9 o'clock except Saturday and Sunday. Students wishing to see Dr. Hitchcock must be at the Infirmary promptly at nine.

2. Students must have a written order from the Infirmary to see Dr. Hitchcock in his private office.

3. Only in an emergency is a student justified in calling Dr. Hitchcock directly.

4. Students calling at the Doctor's office without a written order will be charged the regular price, except in an

emergency, that to be determined by the Doctor.

5. Students living in private homes must notify the Infirmary when ill and before calling the Doctor, except in an emergency.

6. Students in their own houses must notify the Infirmary and the nurse will visit them before an excuse can be given.

7. All excuses for illness will be issued at the Infirmary and must be filed at the Registrar's office not later than one week after the end of the absence period.

8. Students' visiting hours at the Infirmary are from 3 to 4 in the afternoon, and 7 to 8 in the evening.

9. After being admitted to the Infirmary students are not allowed visitors for the first 24 hours, without special permission.

10. Permission to visit the opposite sex must be obtained from the Dean of Women.

## FRESHMAN RULES

### ARTICLE I

The Freshman Rules shall be incorporated into the By-Laws of the Constitution of the Students Association of Alfred University.

### ARTICLE II—FRESHMAN RULES

1. All freshman men shall be required to wear the regulation green cap with yellow button, and all freshman women shall wear the green beret, from Freshman Week in September until a five weeks' period is up. The cap shall be worn without alteration in any way, from six a. m. to six p. m., Monday through Friday, and at all home athletic contests. Freshman court

shall be held for 5 weeks, beginning with Freshman Week and carrying through Thanksgiving unless Freshmen shall be victorious in a contest held in October when they shall also remove their caps.

2. All freshmen shall be forbidden to use tobacco in any form on the campus, i. e., east of Main Street, between Terrace and Pine streets, except in private dwellings and Burdick Hall.

3. Freshmen shall be strictly required to observe all the rules of common courtesy, and shall show due respect to University Faculty and Upperclassmen by touching caps, giving preference in entering and leaving buildings, etc.

4. Freshmen shall greet all faculty members, students, and campus guests with the customary "hello" or a similar greeting.

5. All freshmen shall keep off the grass on the campus as defined above.

6. The regulation frosh buttons shall be worn conspicuously from the time of registration until four weeks after classes begin.

7. Freshmen are prohibited from wearing monograms of any athletic association except that of Alfred.

8. Freshmen shall learn the Alma Mater and all Freshman Rules, and shall be required to pass an examination on the same on or about October 15, at the discretion of the Senate.

9. Men of the Freshman Class who violate such Rules as set forth above shall be tried and sentenced by the Freshman Court, whose members shall execute, or cause to be executed all decisions rendered by that body. Women of the Freshman Class who violate these rules shall be tried and sentenced by the Women's Student Government.

## FRESHMAN COURT

ARTICLE 1. Name. The name of the organization shall be the Freshman Court.

ARTICLE 2. Purpose. SEC. 1. The purpose of this court shall be to uphold Alfred traditions and campus rules.

SEC. 2. To bring male offenders, freshmen, against such traditions and rules, up for trial.

SEC. 3. To prosecute offenders by suitable and just punishment for infringement of said traditions and rules.

ARTICLE 3. Organization and Administration. SEC. 1. The Blue Key, service honor society, shall appoint a chief judge and six jurors of Freshman Court from the Senior Class. At least one shall be a member of the Senate and at least three shall be members of the Blue Key.

SEC. 2. The Freshman Court shall meet weekly, and shall summon violators of freshman rules before its meetings. Penalties, including wearing of sign, public apologies in assembly, etc., may be imposed.

SEC. 3. Paddling shall be eliminated from the penalties for violations of freshman rules and no monetary fines may be imposed.

SEC. 4. For flagrant and persistent violation of freshman rules, the violator may be summoned before a meeting of the Dean of Men, chief judge of Freshman Court, president of Blue Key, and president of the Senior Class. Suitable penalties may be imposed, including the denial of permission to leave town, and the denial of dance, movie, and Collegiate privileges.

SEC. 5. The constitution of Freshman Court may be amended by a two-thirds vote of the Blue Key with the ratification of the Senate.

SEC. 6. Any member of the Court may be removed from office for attitude, indif-

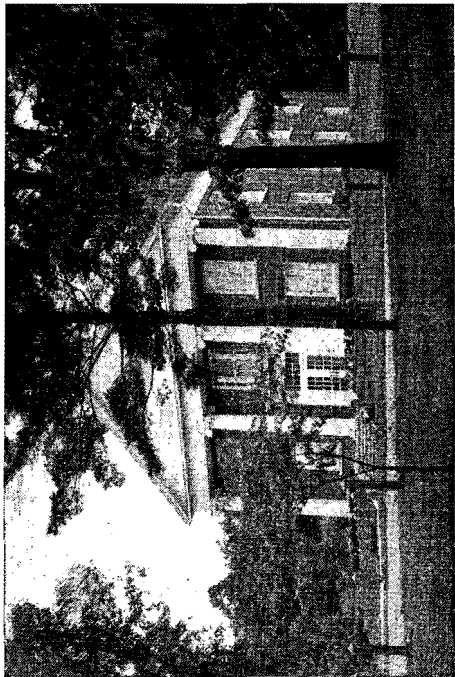
ference or violation of the spirit of the Court, by a two-thirds vote of the Blue Key.

## SUGGESTIONS REGARDING INCIDENTAL EXPENSES

One of the most important items involved in university living, and still one of the items that is seldom discussed, is the manner in which students spend and make use of their money in general. In order that the freshmen and other new students might more quickly become true Alfredians, it is perhaps best to look at this matter fairly and honestly.

Ever since its inception Alfred University has been an outstanding example of a democratic, friendly, medium-sized university. As is to be expected of any college or university, varying degrees of financial security are represented by the members of Alfred's student body, but in accordance with a long standing tradition at Alfred, students are judged by what they really are and not by what they have. The students at Alfred look with disapproval on any intentional ostentation and undue display of clothes, money, and the like. The surest way for one to make a good impression on the other University students is to be friendly, cheerful, cooperative, and to have the ability to accept helpful suggestions from others in the spirit in which they are intended.

There is a rather popular misconception that the pleasure one gets out of college life is in direct proportion to the amount of money spent. The untruth of this has been proven again and again. Informal dances, open without charge to the student body, are frequently held in the Social Hall. Various service organizations on the campus (A.U.C.A., Blue Key, etc.) hold open



Susan Howell Social Hall

parties throughout the year. The cost of these parties and of the parties held by the various classes is always quite nominal. The fraternities and sororities on the campus each sponsor several formal and a number of informal social functions during the year not to mention the Interfraternity and Intersorority Balls. In the majority of cases the cost of these is taken care of by a social assessment that is made each year upon those connected with the fraternity or sorority. Each year the Independent group also organizes several outstanding parties that may be attended by the members of this group at a reasonable cost.

One of the big celebrations on the campus each spring is the St. Pat's Festival. This festival is sponsored by the senior Engineers and is open to everyone. It includes a number of free entertainments as well as a tea dance, a formal ball, a variety show, and a motion picture. The blanket ticket for these four attractions costs in the neighborhood of five dollars. It might prove advisable for all those who intend to "take in" all of the St. Pat's Festival to anticipate the additional expense some weeks in advance.

Motion picture shows are held regularly three or four times a week, and the cost of these shows is greatly reduced by purchasing a ticket good for seven or fifteen shows.

These various social events are mentioned not with the idea that one should take advantage of them all. Nothing would be more foolish. They are mentioned rather with the hope that new students will look ahead at things to come and plan their expenses so that they will not make the mistake of spending their entire semester's amusement money during the first six or eight weeks of school.

The former dean of Lehigh University,

Dr. Max McConn, has put into a very few words one of the most valuable things that should be remembered about college expenses.

"A number of students who have quite sufficient funds get into difficulties in college because of extravagance. In certain cases, of course, the root of this extravagance is dissipation, against the unwisdom of which there is nothing to be said that even a freshman does not know. But more commonly it is an innocent, unconscious extravagance: the dimes and dollars just slip away, but long before the end of the month the student is 'strapped' and must either pinch himself unhealthfully or run bills and borrow".\*

Experience has proven it to be wise to follow the two "C's" of college expenses—caution and common sense—and if these are followed there is little doubt but that your years in college will be more pleasant and profitable.

---

\* Max McConn, *Planning for College* (New York: Frederick A. Stokes Company, 1937), pp. 260 f. Used with permission.

## RELIGIOUS LIFE IN ALFRED

The community of Alfred was established by a small group of pioneers of deep religious conviction. In the development over more than a century of the life of the institution of higher learning within the community, it is natural that one finds the same fine, tolerant Christian spirit prevailing. Founded by a small sect of Protestantism, the Seventh Day Baptists, the doors to its halls of learning have always been open to young men and women of all creeds and races. It has been the observation of many a visitor that nowhere is there greater tolerance for all beliefs than at Alfred University.

Those who this year enter Alfred University as Freshmen will find opportunity to worship at many different services. The oldest church group is the Seventh Day Baptists who hold a morning worship service on the Sabbath, (Saturday) at eleven o'clock in the Village Church. All are welcome to attend. On Sabbath evening (Friday) there is a Young People's meeting at eight o'clock at the Gothic.

Since the vast majority of the student body worship on Sunday, there are several services which you may attend. At eleven o'clock Sunday morning there is a service of worship at the Village Church, known as the Union University Church service. A large number of the student body and the faculty attend this service at which the University Church Choir of forty voices sings.

At 10 o'clock Sunday morning, those who are Catholic may attend the Mass at the Gothic Chapel, conducted by a visiting priest from St. Bonaventure College.

At 5 o'clock Sunday afternoon, an Evening Prayer Service is conducted at the Gothic Chapel by the Reverend John Gilbert Spencer of Hornell, New York.



Chaplain James C. McLeod

In addition to the formal religious services, there are several religious groups on the campus, the oldest of which are the two Christian Associations, known as the A.U.C.A. and the Y.W.C.A. The latter holds regular meetings Sunday evening at seven o'clock for the women of the college, and the men's group meets twice a month and sponsors several other meetings during the year. A complete statement of these organizations, their function and purpose is found in the front part of this handbook which is published and distributed by them.

Eleven years ago, the University Board of Trustees, in cooperation with the Council of Church Boards of Education, established the office of college chaplain and called to that position, the Reverend James C. McLeod, the present chaplain of the college. As pastor of the Union University Church, and director religious activities, he conducts the daily Chapel service, at which attendance is voluntary, and makes himself available to the students for personal interviews. He may be reached at his office in Kenyon Hall or at his home on Park Street. The McLeod home always has the latch string out, for all students are always welcome.

#### NEWMAN CLUB 1940 - 1941 Officers

President—John C. Eggleton  
Vice-Presidents—James F. Lynch, Leo Schifferli, Jr.  
Secretary—Elizabeth J. Olszowy  
Treasurer—Thaddeus Clark  
Historian—Peter Keenan

The Newman Club for Catholic students was established in 1931 under the direction of Chaplain James C. McLeod, and all Catholic students are welcomed into its membership. In the past years this group has been instrumental in bringing to the

campus speakers of distinction and also in sponsoring social activities for its members.

The Brent Fellowship, newest of the religious groups is sponsored by the Episcopal Church for men and women affiliated with that denomination. Only two years old it promises to make a real contribution to the spiritual life of the campus and this year will bring several speakers to the campus.

Although no formal organization has been established for Hebrew students of a definitely religious nature, the members of the Kappa Nu Fraternity (National Hebrew) have sponsored Sabbath evening services at their home and this year will sponsor several such services.

#### THE UNION UNIVERSITY CHURCH

*(Interdenominational)*

James C. McLeod, Minister

Morning worship at 11 o'clock each Sunday. A vested choir of forty voices sing at each service. The church is governed by an executive committee composed of seven students, three faculty members, and two townspeople, elected annually.

#### THE SEVENTH DAY BAPTIST CHURCH

Morning Worship at 11 o'clock each Sabbath morning.

Sabbath School at 10 A. M.

Senior Y.P.S.C.E. each Friday at 8 P. M.

#### CHRIST CHAPEL

*(Episcopal)*

Dr. John Gilbert Spencer, Rector

Evening Prayer service at the Gothic at five o'clock each Sunday afternoon.

#### CATHOLIC MASS

Service at the Gothic Chapel at 10 A. M. each Sunday.

#### DAILY CHAPEL

James C. McLeod, Chaplain

Services at eleven o'clock each Monday, Tuesday, Wednesday and Friday while college is in session.

## STUDENT GOVERNMENTS OF ALFRED UNIVERSITY

### SENATE

#### 1940-1941 Officers

President—Charles Rosenberg  
Vice-President—Russell Pardee  
Secretary—Claudia Wheeler  
Treasurer—Frank Maxwell

Eleven Seniors, representing Alfred University's fraternities, sororities and independent groups, annually make up the Student Senate, which has supreme authority over student activities. The Senate for 1938-39 conducted the first set of campus elections under a new election system, and has instituted a system of modified Freshman Rules and a Freshman Court. The Senate also makes up a budget, allotting grants to deserving organizations.

Senate meetings are open to all students. Senate is the student life of Alfred University. You are welcome to bring your suggestions, complaints, ideas to the meetings, and they will be properly considered.

## CONSTITUTION OF STUDENT'S ASSOCIATION OF ALFRED UNIVERSITY

### ARTICLE I—NAME

Section 1. The name of this organization shall be the Student's Association of Alfred University.

### ARTICLE II—PURPOSE

Section 2. Realizing that the Faculty has supreme authority over all matters connected with student life, and yet know-

ing that they are willing to cooperate with the students to promote the welfare of the school, the students have organized themselves into the Student's Association of Alfred University in order to develop a wise and intelligent self-control, to preserve and regulate beneficial customs and traditions of Alfred, to have charge of and control all college elections, and to assume, whenever expedient, the control of student affairs, all subject to the further provisions of this constitution.

#### ARTICLE III—MEMBERSHIP

Section 1. All persons enrolling as students of Alfred University shall be considered as members of this association.

Section 2. No tax may be levied for the support of this except as may be voted by the Association for any purpose that the Association may deem necessary.

#### ARTICLE IV—ORGANIZATION

Section 1. The Student's Association shall be headed and represented by a Senate consisting of one senior from each of the following organizations, namely: Delta Sigma Phi, Lambda Chi Alpha, Klan Alpine, Kappa Psi Upsilon, Kappa Nu, Pi Alpha Pi, Theta Theta Chi, Sigma Chi. The non-fraternity group shall have three representatives (Amendment 1, 1938).

Section 2. The Senate shall have a President, Vice-President, Secretary-Treasurer and such other officers as it may deem necessary. The President, Vice-President and Secretary-Treasurer shall also act as officers of the Student's Association.

#### ARTICLE V—ELECTIONS

Section 1. On or before the second Monday in April, each organization shall appoint a Junior to represent that organization on the Student Senate.

Section 2. The President of the Senate may call these representatives to attend any meeting in order to observe the procedure of the Senate.

Section 3. Each Senate member shall be required to take the following oath of office when he takes over the duties as a Senator:

"I, . . . . . upon my honor as a student of Alfred University, solemnly swear that I will carry out the duties of this organization to the best of my ability, in an unbiased, trustworthy and gentlemanly fashion."

The president has the right to call upon any or all members of the Senate to give the above oath at any meeting as he sees fit.

Section 4. Officers of the Student Senate shall be elected at the last meeting of the retiring Senate. Only incoming Senators shall vote in the election of new Senate officers. (Amendment 2, 1938).

#### ARTICLE VI—ELIGIBILITY

Section 1. Members of the Student Senate shall be Seniors.

Section 2. No member of the Senate shall lose his seat on account of a change in his college ranking.

Section 3. Two consecutive, unexcused absences from meetings by any member shall terminate his membership; however, an excuse for an absence must be presented to the Senate for acceptance or rejection.

Section 4. Any member is liable to impeachment and removal for misconduct in office by a three-fourths vote of the Senate.

Section 5. Any organization may permanently change its representative with the consent of the Senate, if said change is deemed necessary.



## ARTICLE VII--MEETINGS

Section 1. The Senate shall hold regular meetings at least once a month on a date set at the beginning of each school year by the Senate.

Section 2. Special meetings may be called by the president at any time.

Section 3. Three-fourths of the members shall constitute a quorum at these meetings.

## ARTICLE VIII--POWERS

Section 1. The President shall preside at all meetings of the Senate, of the Association, and of the student body.

Section 2. The President of the Senate shall have the power to vote.

Section 3. The Secretary-Treasurer shall keep the minutes of all meetings of the Senate and of the Association; he shall attend to the correspondence of the Association and perform such other duties as are usually performed by the Secretary-Treasurer of such an organization. He shall also have charge of such funds as are voted by the Association.

Section 4. The Senate shall have final authority over all college customs and tradition; it shall regulate and supervise student activities as stated in the constitution and regulation of student activities; it shall represent the Association in all its relations with the Faculty, Alumni, Trustees and other exterior bodies; it shall be authorized to use discretionary power in all matters requiring immediate action.

Section 5. The Senate shall govern the following campus elections:

1. Officers of the Senior, Junior and Sophomore classes.



The New Ceramic Building

3. Freshman Court.
4. Student Life Committee.
5. Women's Student Government.
6. Fiat Lux.

in the following manner:

(a) The names of candidates for campus officers must be presented two weeks before the first Thursday in May. (Amendment 3, 1938).

(b) All represented groups are to nominate one representative. (Amendment 4, 1938).

(c) Candidates may also be presented to the Senate outside of the nominations submitted by each organization if accompanied by a petition signed by 75 students. (Amendment 5, 1938).

(d) Members of each class shall nominate their candidates for the following year, in meetings of the fraternity, sorority and outsider groups. (Amendment 6, 1938).

(e) Pledges are to vote on all nominations. (Amendment 7, 1938).

(f) All nominations should be made public within one week after the Senate receives them. (Amendment 8, 1938).

(g) Repealed in May, 1939.

(h) An index of 0.5 for the semester prior to election and an average index of 0.8 will be required of all nominees.

(i) Election day shall be the first Thursday in May. (Amendment 9, 1938).

(j) At least one member of the Student Senate shall be present at the meetings for the election of officers to present the names of the nominees. All meetings for the election of class officers will be held on the same day at the same hour, as designated by the Student Senate.

(k) The final elections of officers shall be voted upon by closed ballot by the re-

spective groups. A majority vote of those present shall be necessary for election. (Amendment 10, 1938). In the event a majority vote is not obtained on the first ballot, the two highest shall be voted for again until a majority is obtained. (Amendment 11, 1938).

Section 6. Freshman elections shall be conducted in the presence of the Freshman class by the Student Senate before Nov. 1. It shall be the duty of the Senate to see that some form of class competition is carried on between the Freshman and Sophomore classes sometime before Nov. 10.

Section 7. The Student Senate shall have power to take cognizance of the violation of the campus rules and shall be a court of last resort in the interpretation of these rules.

Section 8. It shall be the duty of the Senate to condemn any practice which may be deemed not in accordance with the true college spirit; to summon to its meetings individuals indulging in such practice or violating Campus Rules, and in case of proven misconduct to inflict such penalties as it shall deem expedient.

Section 9. In all cases, its power may extend censure of individual or groups of individuals for misconduct.

Section 10. The Student Senate, either on its own initiative, or upon the suggestion of college officers, shall assume a vigorous control of situations arising in the field of student activities and student government.

Section 11. Violation of all rules, excepting those set forth in Article II under Campus Rules, shall be referred to the Student Senate for settlement. The Senate and Freshman Court may or may not publish the names of the convicted offenders in the Fiat Lux.

## ARTICLE IX

Section 1. The Student Senate shall pay the Christian Association one dollar per page for publishing in their annual handbook the revised Constitution and By-Laws of the Students' Association.

Section 2. Only letter men in football, basketball, cross-country, track and wrestling may wear the regulation V-neck sweaters.

Section 3. Dances for the benefit of the Athletic Association shall be managed by a person appointed by the athletic council.

## ARTICLE X

Any student transacting any financial business for any student activity or in any activity involving students of Alfred University, shall be responsible to a Faculty member chosen annually by the Senate from a number suggested by the Faculty. Such a responsibility will be interpreted to mean a strict accounting of methods and finance at whatever time the auditor chooses. Should any officer fail to do so, the auditor shall suggest an action to the body that placed him in that office.

## ARTICLE XI—AMENDMENTS

Section 1. This Constitution and By-Laws may be amended at any regular meeting of the Senate by a three-fourths vote of the entire Senate, providing such amendments have been read at a meeting at least one week previous.

Section 2. The Athletic Association Constitution and the Women's Student Government Constitution may be amended as stated in the different articles under their respective Constitutions.

Section 3. There shall be no Frosh-Soph contest on the campus other than those conducted under the jurisdiction of the Student Senate.

## WOMEN'S STUDENT GOVERNMENT

### 1940-1941 Officers

President—

Elizabeth Olszowy, Sigma Chi Nu

Vice-President—

Betty Stangl, Theta Theta Chi

Secretary—Helen Crawford, Sigma Chi Nu

Treasurer—Mary Ellen Mills, The Brick

Ten members, representing the sororities, the dormitory, the independent group, and the N. Y. A. girls, annually make up the Council of the Women's Student Government, which has power to deal with the conduct of its members in their college life, insofar as these are not regulated by the Student Senate, and come within a list of regulations approved by a two-thirds vote of the Women's Student Government, and granted by the Student Life Committee. This body has the power to inflict the penalties to enforce its decisions. The other members of this year's Council are:

Cleo Crawford—Pi Alpha Pi

Rea Bovit, Mildred Pivets, and Ruth

Vaughn—The Brick

Louise Santucci—the NYA girls

Louise Kenyon—the Independent girls.

## CONSTITUTION

### ARTICLE I.—NAME

This organization shall be called the Women's Student Government of Alfred University.

### ARTICLE II.—MEMBERSHIP AND VOTING

Section 1. The membership of the Women's Student Government shall consist of all the women students in the College of Liberal Arts of Alfred University, of the

College of Ceramics of Alfred University, and the School of Agriculture of Alfred University. Membership is not compulsory with those whose parents are residents of Alfred. All members shall have equal power of voting.

#### ARTICLE III.—PURPOSE · POWER

Section 1. The Women's Student Government shall have power to deal with all questions concerning the conduct of its members in their College life, insofar as these are not regulated by the Student Senate, and come within a list of regulations approved by a two-thirds vote of the Women's Student Government, and granted by the Student Life Committee. It shall have power to inflict the penalties to enforce its decisions.

#### ARTICLE IV.—COUNCIL

Section 1. The executive and judicial power of the Women's Student Government shall be vested in a council, composed of the president of the organization, the president of the Brick and eight other members, one of whom shall be chosen as an upper-class representative of Theta Theta Chi, Pi Alpha Pi and Sigma Chi Nu, three of whom shall be chosen as representatives of the Brick, one of whom shall be chosen from the town girls, and one from the School of Agriculture.

Section 2. All business transacted in council meetings shall be kept secret unless otherwise ordered by a two-thirds vote of the council.

#### ARTICLE V.—ELECTIONS

Section 1. Election of the council shall take place by April 15.

Section 2. In case there is vacancy in the council at any time, this vacancy may be filled by vote of the council.

Section 3. The representative from the Freshman class shall be elected by the class every two months. No Freshman shall be eligible for representative for more than two months in the year.

#### ARTICLE VI.—DUTIES OF OFFICERS

Section 1. The president shall be the executive officer of the organization, and shall call together and preside over all meetings of the organization and council.

Section 2. The duties of the vice-president shall be to assume the duties of the president in the absence, or at the request of the president.

Section 3. The duties of the secretary shall be to keep the minutes of all meetings of the organization.

Section 4. The duties of the treasurer shall be to act as custodian of all funds of the organization, paying bills only by vote of the council.

#### ARTICLE VII.—ELIGIBILITY

Section 1. The President of the Women's Student Government shall be a senior, and she shall have preferably served on the council either as a representative or as a member prior to her Senior year.

Section 2. Three unexcused absences from Council meetings by a member shall disqualify her from office.

Section 3. Any member is liable to impeachment for misconduct in office by a two-thirds vote of the Council and may be removed from office by a two-thirds vote of the entire Women's Student Government.

#### ARTICLE VIII.

A quorum of the Women's Student Government shall consist of at least two-thirds of its members.

## ARTICLE IX.

Six members of the council shall constitute a quorum, and no action shall be taken by the council upon the agreement of five voting members.

## ARTICLE X.—MEETINGS

Section 1. The president of the organization with the advice of the council, shall call a meeting whenever sufficient business demands it. Attendance at these meetings shall be compulsory.

Section 2. The council shall meet regularly every week for discussion of matters and for the transaction of such business as is necessary.

Section 3. The council shall appear at all Student Government meetings attired in the regulation cap and gown. The Juniors and Sophomores will wear only the gown.

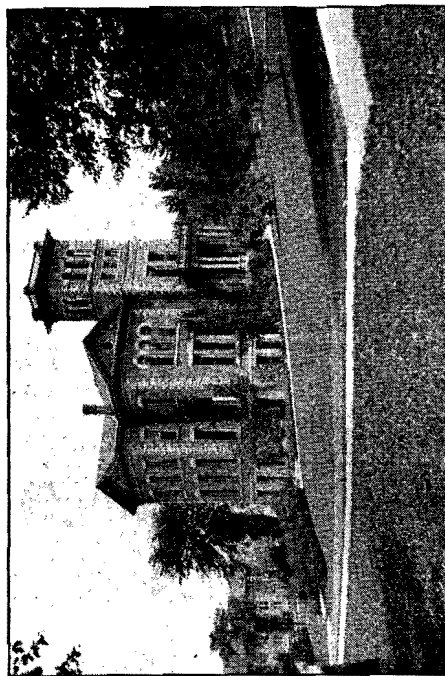
## ARTICLE XI.—PUBLICITY

Section 1. Each member of the organization shall be supplied with a copy of the Constitution and Regulations of the Women's Student Government at the beginning of each College year. The Constitution and the Regulations shall be read by the president to the freshman class at its first meeting.

## ARTICLE XII.

Section 1. After a careful and thorough explanation of the rules by the president of the organization, the Freshmen shall be required to pass an examination on the rules and regulations pertaining to W. S. G., attaining at least a B Grade on such an examination. This shall be conducted by the council not later than Nov. 1. In case anyone fails to pass this examination, due punishment will be inflicted until the grade is attained.

Section 2. Provision shall be made to



Kenyon Memorial Hall

send the president and a junior representative to the annual Inter-Collegiate Student Government Convention. In case the President cannot go, another delegate shall be elected by the organization from either the Junior or Senior class.

#### ARTICLE XIII.—AMENDMENTS

Section 1. This Constitution may be amended by a two-thirds vote of the organization.

#### REGULATIONS

##### ARTICLE I.—PREAMBLE

Section 1. The Women's Student Government heartily believes that normal comradeship between young men and young women, in mutual respect and reverence, in fine self-direction and self-control are essential to the co-operation of social life and activities with the claims of health and scholarship.

Section 2. The following regulations are an attempt to adapt the members of this organization to the special conditions of the college community. This organization expects its members to be guided by the underlying principles of wholesome social relationships in all situations whether covered by these definite statements or not. Disregard of these principles or violations of the regulations will be considered sufficient grounds for imposing penalties.

##### ARTICLE II.—CLOSING HOURS

Section 1. Closing hours are indicated on the opposite page. Following are the exceptions:

a. Senior women on the approved list may have later permission on Friday and Saturday nights. Approved list consists of Senior women recommended by the Dean of Women and the W.S.G.

b. Junior women on the approved list may have 12 o'clock permission once a month with the permission of the President of the W.S.G. and the house mother. Approved list consists of Junior women recommended by the Dean of Women and the W.S.G.

c. Seniors and Juniors may have second show permissions on Thursday, Friday, and Saturday nights.

d. Sophomores may have with permission one second show permission a month.

e. Freshmen may have with permission one Thursday night second show permission a month.

f. 11 P. M. shall be the closing hour during vacation except by special arrangement with the house hostess.

g. 11 P. M. shall be the closing hour after all examinations have ended.

##### FRESHMAN REGULATIONS

1. Freshman women shall not ride in cars with escorts after 6 P. M.

2. Freshman women shall not date during the first semester, except for the show Thursday evening and Friday and Saturday evenings.

(a) If, at the beginning of the second semester, a Freshman woman attains at least a one point index (a "C" average), she may date on Sunday nights as well.

(b) Those not attaining a one point index will observe the same dating regulations as during the first semester. Low indices will be referred to the Dean of Women.

3. A date shall be defined as any casual or pre-arranged meeting with a man after 6 P. M.

##### SPECIAL REGULATIONS

1. Young women may not call for or meet young men at the houses where men live.

# CLOSING HOURS

	Mon.	Tues.	Wed.	Thurs.	Fri.	Sat.	Sun.
Seniors	10:00	10:00	10:00	10:00	11:00	11:00	11:00
Juniors	9:45	9:45	9:45	9:45	10:30	11:00	10:30
Sophomores	9:30	9:30	9:30	9:30	10:30	11:00	10:00
Freshmen	9:30	9:30	9:30	9:30	10:00	11:00	10:00
2d semester							
Freshmen	9:30	9:30	9:30	9:30	10:00	10:30	10:00
1st semester							

2. When a woman is invited to visit at the home of a man, she must show to the Dean of Women permission from home and an invitation from the man's mother or other member of the family.

3. When a woman is invited to visit other than a campus woman or other than a near relative, it is necessary to show the Dean of Women permission from home.

4. Any member upon leaving town shall leave with the person in authority at her place of residence, information as to where she is going and her address while out-of-town.

5. Any overnight absence must be arranged with the Head of the House. Students may spend the night in residence houses other than their own only on Friday or Saturday night, unless by special permission. No woman must be absent from her own house after a college party of any kind. Special permission to go to her own home after any such occasion must be obtained from the Dean of Women. If the permission is granted, the student must return to her own house and report in person before leaving.

6. Women returning to college from home or a visit must be at house of residence before closing time unless special permission has been given.

## "THE TEN COMMANDMENTS"

1. All permissions in accordance with the Student Government Regulations shall be granted by the President of the Council any time before 7:00 P. M. If you are unable to reach the President, permission may be granted by a Council Member appointed by the President.

2. No more than six 11 o'clock permissions shall be granted unless the applicant has an index of 2.0.

(a) Late permission to work in the Ceramic School shall be granted by the President of the W.S.G. as she deems wise. The permission is not later than 10 o'clock unless with the approval of the department head.

(b) Freshman women cannot have Ceramic School permission.

3. Restaurant privilege is allowed after college calendar events until 11:00 p. m. No restaurant privilege is allowed after this hour.

4. Women not attending college dances on the college calendar may with *permission* observe 11:30 p. m. closing hours, and be permitted to go to Hornell or elsewhere without such action being counted as a late permission, although, of course, with proper chaperonage.

5. A "campus" means that a woman may not leave her house of residence after 8 P. M.

(a) A "social campus" means that a woman may not go to social recreation places including the Collegiate and "Dog Cart" and may say merely "hello" to men. Any social meeting with men will be considered as violating "social campus".

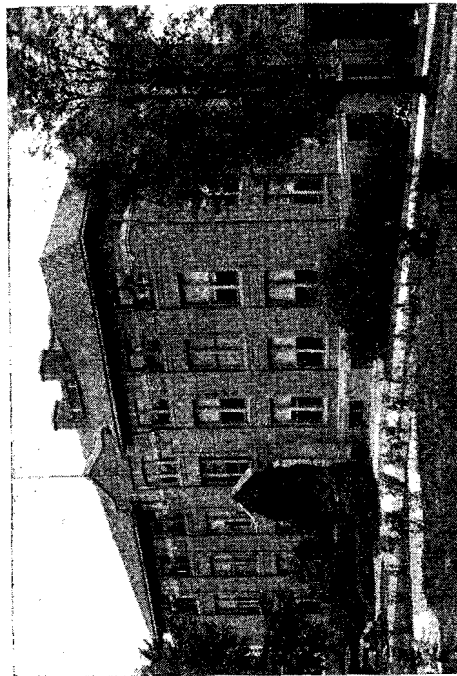
6. Smoking shall be allowed only in such rooms as provided for by the University.

7. Beginning with Moving-Up Day all classes shall observe the rules of the classes above them.

8. Entertaining at the houses may be done only on week-end afternoons and evenings unless by special permission of the house mother.

9. Each member, except Council members, is assessed \$1.00 per year.

10. The W. S. G. shall have the power to recommend any woman to the Dean of Women for suspension.



Agricultural School



All Women's Student Government regulations are in effect as long as Women are on the campus.

## STUDENT SENATE OF THE AGRICULTURAL SCHOOL

The Agricultural School Senate is a manifestation of the democratic propensities of both the faculty and the students. It is a representative body of the various groups in the school, consisting of eight members: the senior and freshman class Presidents are automatically on the board, there are two seniors and two freshmen two-year course men, and one senior and one freshman three-year course men.

Literally the Senate is the governing unit of the student body and it intercedes between student demands and the faculty. The board has at its discretion the dispensation of all money to be allotted to the various organizations, controls all extra-curricular activities, and decides the policies of the school.

Because of its position, all Agricultural School organizations and class officers are responsible for their actions to the Senate.

## STUDENT LIFE COMMITTEE

There is a college committee on Student Life composed of both faculty and student members. There are four faculty members, two of whom are elected by the faculty and two by the student body, and three students, one of whom is elected by the faculty and one by the student body and one by the Student Senate.

The committee elected for the 1940-1941 school year includes:

Morris Musgrave—President  
Elizabeth Olszowy—Secretary  
Dean Dora K. Degen  
Dean Ellis M. Drake  
Professor H. O. Burdick  
Professor Donald Schreckengost

This committee shall be a regular medium of intercourse between students and faculty. It shall be its duty at all times to advise with the Student Senate and make suggestions to it bearing on matters of student conduct and self-government. The Student Senate will confer with this committee on any or all matters of student interest.

The committee has advisory supervision over all student social functions and amusements. It grants all dates for the campus social calendar and students desiring to promote any entertainment, party, class affair, dance, etc., must make application to the committee. All permissions granted shall at once be submitted to the Dean of Women who shall approve of the arrangements and chaperonage of such functions.

## STUDENT LIFE REGULATIONS

No student social function shall occur within one week prior to examinations, during the examination period, or during Commencement.

Each fraternity or non-fraternity organization may have a maximum of four calendar parties per year.

Each fraternity or non-fraternity organization may have small parties subject to the regulations which govern the large social functions. These parties end at 11:00 p. m.

Arrangements for all social affairs must be made with the Dean of Women by Monday of the week in which the party is held.

Information must be given in regard to chaperones, date, place, and type of party. For small parties, the arrangements may be made later in the week, but not later than 24 hours before the party is held.

The chaperones for all parties must be chosen from the faculty unless by special arrangement with the Dean of Women.

If women are entertained for dinner, or otherwise, at fraternity or other houses where men live, a woman member of the faculty or the wife of a member of the faculty must be invited.

For each party a student committee of the organization must be responsible for carrying out the social regulations of the college.

No out-of-town dances are to be attended during the week except by special permission from the Dean of Women. During the week-end, out-of-town dances may be attended only if satisfactory arrangements are made with the Dean of Women. This applies also when visiting. (See sections 2 and 3 under Special Regulations.)

All social regulations apply to recess and inter-semester affairs as well as to those held during the college term.

## UNIVERSITY FACULTY DIRECTORY

\* Indicates that this professor is the chairman of his respective department.

(Note—If no division of the University is noted in connection with a faculty member, he is on the staff of the College of Liberal Arts.)

Raymond L. Alty, B.S. (1937)  
Instructor in Physics  
(Office—Hall of Physics)

Charles R. Amberg, B.S., M.S. (1929)  
Professor of Ceramic Engineering  
(Office—New Ceramic Building)

Bror H. Anderson, B.S. (1939)  
Floriculture and Horticulture  
(Office—Agricultural School)

Ahva John Clarence Bond, A.M., B.D., D.D.  
(1935)  
Dean School of Theology  
English Bible, Philosophy of Religion,  
and Practical Theology  
(Office—Gothic)

Harold O. Boraas, A.B., A.M., Ph.D. (1927)  
Associate Professor of Education  
(Office—Hall of Physics)

† Hazel M. Boyle, A.B., A.M. (1938)  
Instructor in Romance Languages  
(Office—Kenyon Memorial Hall)

Robert J. Brooks, B.S. (1937)  
Air Conditioning  
(Office—Agricultural School)

\* Charles D. Buchanan, A.B., A.M., Ph.D.  
(1930)  
Professor of German  
(Office—Alumni Hall)

† Substitute

\*Harold O. Burdick, A.B., A.M., Sc.D. (1931)  
Professor of Biology, Curator of Museum  
(Office—Allen Laboratory)

Wendell M. Burditt, B.S., A.M. (1929)  
Associate Professor of English and  
Journalism  
(Office—Alumni Hall)

Forrest Burnham (1939)  
Instructor in Ceramic Art

Twila Chapin, B.S. (1940)  
Secretarial Training  
(Office—Agricultural School)

Marie Louise Cheval, A.B., A.M. (1931)  
Assistant Professor of Romance Languages  
(Office—Kenyon Memorial Hall)

George F. Craig, B.S. (1937)  
Radio  
(Office—Agricultural School)

Mary Craig, B.S. (1939)  
Mathematics  
(Office—Agricultural School)

Lavinia E. Creighton, B.S. (1936)  
Director of Physical Education for  
Women  
(Office—Gymnasium)

A. Burdet Crofoot, B.S. (1936)  
Instructor in English  
(Office—Green Block)

Boothe C. Davis, A.M., Ph.D., D.D. (1895-  
1933)  
President Emeritus  
(Office—Green Block)

\*Dora K. Degen, Ph.B., A.M. (1925)  
Dean of Women  
Professor of English Bible and Religious  
Education  
(Office—Green Block)

\*M. Ellis Drake, A.M., Ph.D. (1926)  
Dean of Men  
Charles Potter Professor of History and  
Political Science  
(Office—Kanakadeu Hall)

\*Beulah N. Ellis, A.B., A.M. (1923)  
Professor of English  
(Office—Alumni Hall)

Kenneth B. Floyd, B.S.A., M.S. (1935)  
Agricultural Business  
(Office—Agricultural School)

† \*Eva L. Ford, A.B., A.M. (1926)  
Professor of Romance Languages  
(Office—Kenyon Memorial Hall)

Marion L. Fosdick (1915)  
Professor of Ceramic Art  
(Office—Binns Hall)

Alfred T. Goble, B.A., Ph.D. (1937)  
Assistant Professor of Physics  
(Office—Hall of Physics)

Ruth P. Greene, A.B., B.L.S., M.S. (1929)  
Librarian  
(Office—Carnegie Library)

Walter L. Greene, A.B., B.D., D.D. (1926)  
Professor of Church History, School of  
Theology  
(Office—Gothic)

\*Charles M. Harder, B.S. (1927)  
Professor of Ceramic Art  
(Office—New Ceramic Building)

† On leave of absence, 1940-41

Harold C. Harrison, B.S., Ph.D. (1936)  
 Assistant Professor of Chemistry  
*(Office—Binns Hall)*

William B. Harrison (1937)  
 Electrical Shop  
*(Office—Agricultural School)*

\*E. Fritjof Hildebrand, B.S., A.M. (1922)  
 George B. Rogers Professor of Industrial  
 Mechanics  
*(Office—Shop Building)*

Walter C. Hinkle, B.S. (1937)  
 Farm Machinery  
*(Office—Agricultural School)*

\*Major E. Holmes, A.M., Ph.D. (1932)  
 Dean, New York State College of Ceramics  
*(Office—New Ceramic Building)*

William Jaeger, B.S. (1940)  
 Power Distribution  
*(Office—Agricultural School)*

Frank E. Lobaugh, B.S. (1932)  
 Assistant Professor of Ceramic Engi-  
 neering  
*(Office—Binns Hall)*

\*Lloyd L. Lowenstein, B.A., Ph.D. (1937)  
 Associate Professor of Mathematics  
*(Office—Hall of Physics)*

Everett E. Lund, B.S., M.A., Ph.D. (1937)  
 Assistant Professor of Biology  
*(Office—Allen Laboratory)*

\*Arlie Estus McGuire, M.S., Ph.D. (1938)  
 Associate Professor of Sociology and  
 Philosophy  
*(Office—Alumni Hall)*

James A. McLane, B.P.E. (1928)  
 Director of Physical Education and of  
 Athletics, Professor of Physical Edu-  
 cation  
*(Office—Gymnasium)*

James C. McLeod, A.B., B.D. (1929)  
 Chaplain  
 Student Pastor and Director of Religious  
 Activities  
*(Office—Kenyon Memorial Hall)*

Clarence W. Merritt, B.S. (1925)  
 Assistant Professor of Ceramic Engineer-  
 ing  
*(Office—Binns Hall)*

Daniel Minnick, B.S. (1937)  
 Instructor in Physical Education and  
 Athletics  
*(Office—Gymnasium)*

Erle M. Myers, B.S. (1926)  
 Dairy Engineering  
*(Office—Agricultural School)*

Kaspar O. Myrvaagues, A.M., Ph.D. (1933)  
 Assistant Professor of German  
*(Office—Alumni Hall)*

\*G. Stewart Nease, A.M., Ph.D. (1930)  
 Wm. C. and Ida F. Kenyon Professor of  
 Latin and Wm. B. Maxson Professor of  
 Greek  
*(Office—Kenyon Memorial Hall)*

Clara K. Nelson (1921)  
 Assistant Professor of Drawing  
*(Office—New Ceramic Building)*

W. Varick Nevins, III, B.S. (1937)  
 Instructor in Mathematics  
*(Office—Hall of Physics)*

J. Nelson Norwood, A.M., Ph.D. (1910)  
 President  
*(Office—Carnegie Library)*

Paul B. Orvis, B.S. (1936)  
 Director, New York State School of  
 Agriculture  
*(Office—Agricultural School)*

Truman A. Parish, B.S. (1936)  
Agronomy  
(Office—*Agricultural School*)

Agnes M. Pearson, B.S., M.S. (1939)  
Instructor in Business and Secretarial  
Studies  
(Office—*Alumni Hall*)

L. Ray Polan, A.B., M.S. (1931)  
Assistant Professor of Mathematics  
(Office—*Hall of Physics*)

Herman Poppelbaum, Ph.D. (1940)  
Special Lecturer  
Anthropology and Psychology

\*Clifford M. Potter, M.S. (1919)  
Babcock Professor of Physics  
(Office—*Hall of Physics*)

\*Murray J. Rice, A.M., Ph.D. (1927)  
Professor of Chemistry in New York  
State College of Ceramics  
(Office—*Binns Hall*)

Elbert W. Ringo, A.B., A.M. (1934)  
Assistant Professor of Romance Lan-  
guages  
(Office—*Kenyon Memorial Hall*)

George S. Robinson (1918)  
Poultry Husbandry  
(Office—*Agricultural School*)

Lloyd W. Robinson, B.S. (1919)  
Animal Husbandry and Farm Management  
(Office—*Agricultural School*)

\*Fred W. Ross, B.S., M.S., Ph.D. (1926)  
Professor of Botany and Geology  
(Office—*Kenyon Memorial Hall*)

Willis C. Russell, A.M., Ph.D. (1934)  
Assistant Professor of History and  
Political Science  
(Office—*Kanakadea Hall*)

‡ Substitute

Anna May Ryno, B.S. (1933)  
Assistant Librarian  
(Office—*Carnegie Library*)

\*Paul C. Saunders, M.S., Ph.D. (1924)  
Professor of Chemistry  
(Office—*Allen Laboratory*)

Ann Scholes, B.S., M.S. (1939)  
Mathematics  
(Office—*Agricultural School*)

\*Samuel R. Scholes, A.B., Ph.D. (1932)  
Professor of Glass Technology and Di-  
rector of the Glass Laboratory  
(Office—*New Ceramic Building*)

‡ Samuel R. Scholes, Jr., B.S., Ph.D. (1940)  
Instructor in Chemistry  
(Office—*Allen Laboratory*)

Mrs. Samuel R. Scholes (1937)  
Director of Music  
(Office—*Agricultural School*)

Donald Schreckengost (1935)  
Professor of Ceramic Design  
(Office—*New Ceramic Building*)

Ada Becker Seidlin (1920)  
Professor of Pianoforte  
(Office—*Home*)

\*Joseph Seidlin, M.S., A.M., Ph.D. (1920)  
Professor of Education  
Director of Graduate Division  
Director of Bureau of Appointments  
(Office—*Hall of Physics*)

George B. Shaw, B.D., D.D. (1938)  
Professor of English Bible  
(Office—*Gothic*)

‡ Substitute

Herman E. Sicker (1938)  
General Electricity  
(Office—Agricultural School)

\*C. Duryea Smith, II, B.A., M.A. (1937)  
Assistant Professor Public Speaking and  
Dramatics  
(Office—Green Rock)

†John R. Spicer, A.B., A.M. (1935)  
Assistant Professor of English  
Counsellor to Prospective Students  
(Office—Green Block)

Waldo A. Tittsworth, A.M., M.S., Sc.D. (1912)  
Registrar  
Professor of Mathematics  
Director of Summer School  
(Office—Kanakadca Hall)

\* Lelia E. Tupper, A.M. (1926)  
Assistant Professor of English  
(Office—Green Block)

Audrey Utter, A.B. (1938)  
Librarian  
(Office—Agricultural School)

Edgar D. Van Horn, A.M., D.D. (1927)  
Professor of Theology and Social Science  
School of Theology  
(Office—Gothic)

Lloyd R. Watson, A.M., Ph.D. (1931)  
Professor of Chemistry  
(Office—Allen Laboratory)

†David W. Weaver, B.S., M.S. (1930)  
Assistant Professor of Chemistry  
(Office—Allen Laboratory)

\*John E. Whitcraft, B.S., M.S. (1939)  
Assistant Professor of Business and  
Secretarial Studies  
(Office—Alumni Hall)

† On leave of absence, 1940-41

Alfred E. Whitford, A.M., Sc.D. (1932)  
Dean of the College of Liberal Arts  
Stephen Babcock Professor of Higher  
Mathematics  
(Office—Hall of Physics)

Leland E. Williams, B.S., A.M. (1920)  
Assistant Professor of Industrial Me-  
chanics  
(Office—Hall of Physics)

\*Ray W. Wingate (1912)  
Professor of Music  
(Office—Green Block)

Alex Yunevich, B.P.E. (1937)  
Head Coach of Athletics  
(Office—Gymnasium)

#### OFFICE DIRECTORY

Joseph J. Auer (1939)  
Accountant  
(Office—Agricultural School)

James D. Bennehoff, D.V.M.  
Veterinarian  
(Office—Agricultural School)

Lydia Conover, R.N. (1927)  
Supt. Clawson Infirmary  
(Office—Clawson Infirmary)

Helen Cottrell (1934)  
Secretary to the Director of the Agricul-  
ture School

Burton B. Crandall, A.M., M.B.A. (1930)  
Treasurer  
(Office—Carnegie Library)

Benjamin F. Crump (1939)  
Accountant  
(Office—Carnegie Library)

Boothe Colwell Davis, Ph.D., D.D., LL.D.  
(1895 - 1933)  
President Emeritus of the University  
(Office—Green Block)

Marian C. Gardiner, B.S. (1934)  
Secretary to the Deans

R. O. Hitchcock, M.D. (1927)  
University Physician  
(Office—Home, Clawson Infirmary)

Betty M. Jacox, A.B. (1939)  
Secretary to Director Bureau of  
Appointments  
(Office—Hall of Physics)

Lucille B. Knapp, B.S. (1930)  
Secretary to the President  
(Office—Carnegie Library)

Roberta B. Mower, B.S. (1938)  
Secretary to the Registrar  
(Office—Kanakadea Hall)

Alice Niederhanser (1937)  
Secretary to the Dean, New York State  
College of Ceramics  
(Office—New Ceramic Building)

J. Nelson Norwood, M.A., Ph.D. (1910)  
President  
(Office—Carnegie Library)

Paul B. Orvis, B.S. (1936)  
Director, New York State School of  
Agriculture  
(Office—Agricultural School)

Irene C. Post (1932)  
Secretary to the Treasurer  
(Office—Carnegie Library)

Charles Roberts (1938)  
Coordinator of N.Y.A. Boys  
(Office—Agricultural School)

Minna Stubbs (1939)  
Coordinator of N.Y.A. Girls  
(Office—Agricultural School)

Helen Taylor (1928)  
Secretary to the Treasurer  
(Office—Carnegie Library)

Katharine S. Titsworth, A.B. (1937)  
Assistant in the offices of the President  
and Registrar

Mary K. Lewis (1940)  
Assistant in the Registrar's Office  
(Office—Kanakadea Hall)

Ruth D. Whitford, B.S. (1928)  
Secretary of the Alumni Association  
Secretary to Mr. Spicer  
(Office—Green Block)



Alfred E. Whitford,  
A.M., Sc.D.  
Dean of the  
College of  
Liberal Arts

Paul B. Orvis,  
B.S.  
Director of the  
New York State  
School of  
Agriculture



Major E. Holmes,  
A.M., Ph.D.  
Dean of the  
New York State  
College of  
Ceramics



Ahva J. C. Bond,  
B.D., D.D.  
Dean of the  
School of  
Theology





## CALENDAR FOR 1940-1941

### First Semester

1940

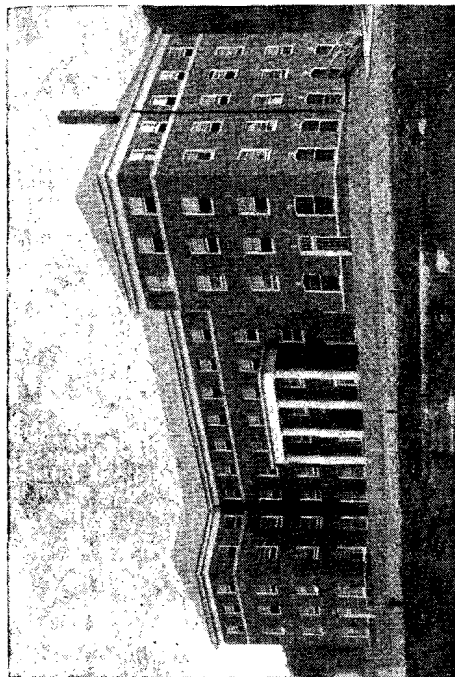
Entrance examinations Mon., Sept. 16  
 Registration for Seniors, Juniors and  
 Sophomores Mon., Tues., Sept. 18, 17  
 Freshman Days Tues., Wed., Sept. 17, 18  
 Instruction begins Thurs., Sept. 19  
 Founders' Day Exercises Thurs., Nov. 7  
 Thanksgiving recess begins  
 Wed., 10 A. M., Nov. 20  
 THANKSGIVING RECESS  
 Instruction resumed Mon., 8 A. M., Nov. 25  
 Christmas recess begins  
 Fri., 10 A. M., Dec. 20  
 CHRISTMAS RECESS

1941

Instruction resumed Mon., 8 A. M., Jan. 6  
 Review Days Mon., Tues., Jan. 20, 21  
 Mid-Year examinations begin Wed., Jan. 22  
 Examinations end; semester ends  
 Fri., Jan. 31

### Second Semester

Registration of new students Tues., Feb. 4  
 Instruction begins Wed., Feb. 5  
 SPRING RECESS Time to be announced  
 Review Days Mon., Tues., May 26, 27  
 Final examinations begin  
 Tues. P. M., May 27  
 Memorial Day—half holiday Fri., May 30  
 Senior examinations end Mon., June 2  
 Final examinations end Fri., June 6  
 One Hundred and Fifth Commencement  
 Sat., June 7 to Mon., June 9



Bartlett Dormitory

## MEN'S ATHLETICS

Alfred University offers opportunities for participation in and observation of, both Varsity and Freshman: football, cross-country, wrestling, basketball, track. Boxing, fencing, tennis and golf enthusiasts may participate in these activities under skilled supervision, although they are still minor sports.

The College Freshman who does not go out for some sport misses a splendid opportunity to become acquainted with outstanding men of the campus, and to distinguish himself through participation in athletic contests. Freshmen making a team are awarded numerals and certificates.

In addition to Freshman and Varsity athletics there are interclass competitions, both for the men and for the women, and intramural sports controlled by the Intramural A. A. and supervised by the Director of Physical Education. A trophy is provided in these intramural contests.

The, but slightly altered football team, defeated only four times in the last three years, under the skillful tutelage of Coach Yunevich, should make a good showing against the stiffer competition of this year. Night football will be continued for all home games this season.

Basketball also should be an outstanding sport feature, when last year's team augmented by recruits from a freshman squad takes the court against some of the stiffest competition in the East.

Cross-country is one of the most outstanding sports at Alfred as Alfred University has been a consistent winner in the State Conference championships and has shown up creditably in the Middle Atlantic.

Track, also, has been successful, three State Conference titles having been captured and the team has been well toward the top in Middle Atlantic Conference rating.

The wrestling team was fairly successful last year and aided by several promising sophomores should have a good season. A large Senior class representation will deplete the ranks so freshmen are urged to come out for this sport.

Tennis and golf include University tournaments and matches with outside teams. More active interest in these matches will make them outstanding sport events.

### THE ATHLETIC GOVERNING BOARD

#### 1940-1941 Officers

Chairman—Professor James A. McLane  
Vice-Chairman—Russell Pardee  
Secretary—Franklin Morley

#### ARTICLE I.—NAME

The name of this organization shall be the Alfred University Athletic Governing Board.

#### ARTICLE II.—MEMBERSHIP

The following constitute the membership of the Board:

Director of Athletics  
Coaches of all sports  
Senior managers of all sports  
Chairman of the Committee on Athletics  
(Board of Trustees)  
Chairman of the Committee on Athletics  
(Faculty)  
Student representatives (2) (Elected by the Student Association)  
Two Alumni to be selected annually

### ARTICLE III.—OBJECT

Section 1. To submit the budget for the ensuing year to the University for approval.

Section 2. To approve the schedules of all intercollegiate contests.

Section 3. To sanction all insignia and honors recommended by the coaches in their respective sports.

Section 4. To act in an advisory capacity to the Director of Athletics.

Section 5. To elect managers and assistant managers for all sports.

Section 6. To promote good relationships with other universities and colleges.

### ARTICLE IV.—OFFICERS

The officers of the board are:

- (1) Chairman (Director of Athletics)
- (2) Vice-Chairman (Student Association representative)
- (3) Secretary (Student Association representative)

### ARTICLE V.—DUTIES OF THE OFFICERS

Section 1. The chairman shall:

(a) Preside at the meetings of the Governing Board.

(b) Submit the budget, schedules and policies to the Governing Board for approval.

(c) Be authorized to represent the Governing Board in emergencies.

Section 2. The vice-chairman shall preside at the meetings in the absence of the chairman.

Section 3. The secretary shall keep complete records of all proceedings at the meetings and shall notify members of the committee of a regular or special meeting.

### ARTICLE VI.—MEETINGS

Section 1. Meetings shall occur immediately following the close of each seasonal sport.

Section 2. Special meetings may be called at the direction of the chairman or at the request of six members of the Governing Board.

### ARTICLE VII.—QUORUM

Ten members including either the chairman or vice-chairman shall constitute a quorum.

### ARTICLE VIII.—CHANGE OF CONSTITUTION

An affirmative vote of two thirds of the total membership at a regular or special meeting shall be required to change the constitution, the change having been proposed at a preceding meeting.

### ARTICLE IX.—BY-LAWS

Section 1. Student Varsity Managers:

Shall act as assistants to the Director of Athletics either during his absence or at his request.

Shall work under the direction of the coach in his particular sport in supervising practice, trips, and games; and be responsible for all equipment allotted for his sport.

Shall govern the activities of his assistants and all candidates for managerial positions of his particular sport.

Section 2. Student Freshman Manager:

Shall have as duties the same as the Varsity manager in his particular sport.

Section 3. Election of Managers:

Managers and assistant managers shall be elected by the governing board from such men as have been in competition for the position, unless there is no candidate

available. If such be the case, selection of available candidates may be made from the proper class.

At the conclusion of each sport season, upon recommendation of the present manager and coaches, the governing board shall elect Varsity manager, Freshman managers and assistant managers for the coming season.

#### Section 4. Regulations governing Managers:

(a) A student manager for each Varsity and Freshman sport shall be a Senior unless voted otherwise by a 2-3 majority of the governing board.

(b) Assistant managers for each sport shall be Juniors.

(c) Managers of any particular sport may be removed from office upon recommendation of the coach by a 2-3 majority of the Governing Board.

Section 5. At the last meeting of the school year two Alumni representatives shall be elected to the Athletic Governing Board.

#### Section 6. Regulations governing athletics:

(a) Major sports are football, basketball, track, cross-country and wrestling. Minor sports are tennis, boxing, fencing, and golf.

(b) Insignia for major sports shall be a 7-inch chenille "A" except that managers' letters shall be designated by small "m" attached to that letter.

(c) Insignia for minor sports shall be a 7-inch chenille block "A" with 3-inch block letters designating the sport on either side, except that managers shall have the small "m" attached.

(d) To win a major "A" in football or basketball, a person must play two-thirds (2-3) of the actual playing time during a

season. To win a major "A" in track a person must score at least nine (9) points during the season, those points scored in a conference meet to count double. To win a major "A" in cross country a person must place in a meet won by Alfred or be a point-winning member of a team placing no less than third in a conference meet. To win a major "A" in wrestling, a person must engage in one-half ( $\frac{1}{2}$ ) the meets and obtain a total of nine points for the season. To win a minor "A" in tennis a person must engage in one-half ( $\frac{1}{2}$ ) the matches and win a singles match or pair in a winning doubles match in an inter-collegiate contest.

(e) Numerals shall be awarded for participation in a Freshman sport, under the same regulations that govern Varsity awards.

(f) Varsity and freshman managers shall be awarded insignia for their particular sport at the completion of the season.

(g) Any person entitled to insignia shall receive a certificate designating authority to wear such insignia. The certificate shall be signed by the Director of Athletics and Coach of that particular sport.

(h) Under special conditions, insignia may be awarded to individuals and teams on recommendation of the coach and approval of the board.

(i) Approved standard sweaters shall be presented to those individuals receiving their major "A" for the first time.

#### Section 7. Eligibility.

(a) A faculty committee on athletics, appointed by the President of the University, shall have the responsibility of determining the academic eligibility of a candidate for an inter-collegiate team.

(b) In order to be eligible to play on intercollegiate athletic teams a student must be regularly enrolled in Alfred University and must take a minimum of twelve semester hours per week, doing full work in a regular course as defined in the curriculum.

(c) No student shall participate in Varsity inter-collegiate contests until he shall have been in attendance for one full academic year subsequent to attaining the equivalent of Freshman rank.

(d) No student shall participate in inter-collegiate games for more than three years in the aggregate, and any member of the team who plays in any part of an intercollegiate contest does thereby participate in athletics for the year.

#### Section 8. General regulations.

(a) The coach shall have complete jurisdiction of the team in all matters of conduct.

(b) The coach shall report to the Committee on Absences of the University immediately after out-of-town games the names of the students who have participated in the contest, the time when they left and when they returned.

(c) No body of students exceeding four in number (two in basketball) shall take part in any contests played out of town, outside of the regular schedule approved by the athletic governing board.

(d) The Junior Varsity shall consist of those men who have regularly participated in practice against the Varsity. The second team shall be under the jurisdiction of the coach, and no group of men other than as above stated shall represent the University in any form of athletics.

## ALFRED UNIVERSITY INTRAMURAL ASSOCIATION

1940 - 1941 Officers

President—Russell Pardee

The other members are:

Morris Musgrave

Ernest Nadelstein

Ralph Rhodes

Robert Whitwood

### ARTICLE I.—NAME

The name of this committee is the Alfred University Intramural Association.

### ARTICLE II.—MEMBERSHIP

The following constitutes the membership of the Association:

One member representing each fraternity and one representative from any group entering a team in organized contests.

Each organization shall be taxed the sum of \$1.00 for each sport in which they participate.

### ARTICLE III.—OBJECT

Section 1. To promote better feeling and sportsmanship on the campus.

Section 2. To provide for organized intramural competition.

Section 3. To enable a larger group to participate in organized sports.

Section 4. To promote interclass competition.

### ARTICLE IV.—OFFICERS

The officers of the association are:

(1) President

(2) Vice-President

(3) Secretary-Treasurer

## ARTICLE V.—DUTIES OF OFFICERS

### Section 1. The President shall:

(a) Preside at the meetings of the Intramural Association.

(b) Submit budget and policies to the Association.

(c) Make all schedules for Intramural sports.

Section 2. The Vice-President shall in the absence of the president preside at all meetings.

Section 3. The Secretary-Treasurer shall keep complete records of all proceedings at the meetings and notify all members of association of regular or special meetings. Also keep a financial record which must be submitted to the Student Senate for approval.

## ARTICLE VI.—MEETINGS

Section 1. All meetings shall be called at the direction of the president.

## ARTICLE VII.—QUORUM

Section 1. One-half of the members of the association, including the president or the vice-president constitute a quorum.

## ARTICLE VIII.—CHANGE OF CONSTITUTION

Section 1. An affirmative vote of 2-3 of the total membership at a regular or special meeting shall be required to change the constitution, the change having been proposed at a preceeding meeting.

## ARTICLE IX.—BY-LAWS

Section 1. Election of Officers. Officers shall be elected annually at a meeting held at the close of the softball tourney.

Section 2. Eligibility:

(a) All members competing in intramural sports must be regularly enrolled students carrying not less than 10 semester hours.

(b) All persons on either the Varsity, Jay-Vee or Freshman basketball squads are ineligible to play in intramural basketball competition.

(c) All persons having earned a Varsity "A" in basketball are ineligible in basketball competition.

(d) Officials at all intramural contests shall be appointed and approved by the Association.

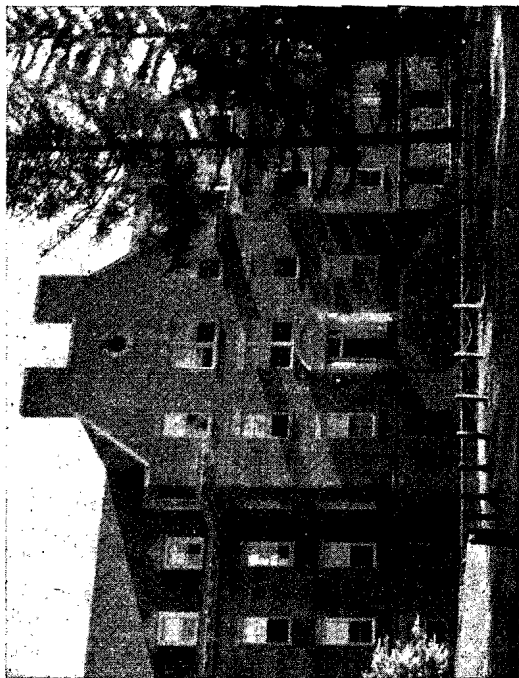
Section 3. Any organized group can enter a team in any intramural sport.

Section 4. All teams entered in basketball tournament must have individual jerseys for players.

Section 5. To retire any trophy from competition any group must win three "legs" on the trophy for which they are competing.

Section 6. The Association shall make awards at the conclusion of each sport. The number of awards shall be decided upon by the Association.

Section 7. Lists of team members must be handed in to the Association within a week after competition begins. Lists must be complete as there will be no changing of lists after said date.



The Brick

## WOMEN'S ATHLETIC ASSOCIATION

1940 - 1941 Officers

President—Betty Tim Kaiser

Secretary—Ann Bastow

Treasurer—Jane Morris

### CONSTITUTION

(Revised 1940)

#### ARTICLE I—NAME

The name of the organization shall be the Women's Athletic Association of Alfred University.

#### ARTICLE II—MEMBERSHIP

Section A. All college women shall be members of the Association.

Section B. The following shall constitute the membership of the W.A.G.B.:

The Athletic Director for Women

One Faculty Advisor

One Representative from each of the four classes

The President of Alpha Tau Theta

Section C. Perpetuation of Membership.

The Board shall perpetuate itself by electing to membership at the regular meeting in May a group of girls who have indicated their interest in membership and a faculty advisor.

#### ARTICLE III—OBJECT

Section A. The object of the Board shall be to promote and supervise the athletic activities of the women of the University and to stimulate interest in all forms of exercise.

Section B. To approve all intra-mural contests.

Section C. To sanction all insignia, honors and prizes recommended by the managers in their respective sports.

Section D. To supervise expenditures.

#### ARTICLE IV—OFFICERS

Section A. The officers of the Board shall be: President, Secretary, Treasurer.

#### ARTICLE V—DUTIES OF OFFICERS

Section A. The President.

1. Shall preside at all meetings of the committee and shall have immediate and personal supervision over all the details in connection with the Women's Athletic events of the University.

2. Shall be invested with the authority to represent the Committee in the emergencies.

Section B. Secretary.

1. She shall keep complete records of all the proceedings of the committee.

2. Shall notify all members of the date of meetings.

3. Shall attend to all correspondence necessary to the business of the Board.

4. Shall keep a record on file of all athletic records, winners of contests and intra-mural contests.

5. Shall observe that all motions made are in accordance with the constitution.

#### ARTICLE VI—MEETINGS

Section A. The first meeting of the school year shall occur on the Tuesday following the opening of the Fall Semester.

Section B. There shall be a monthly meeting at a time decided upon by the Board at the first meeting of the year.

Section C. A special meeting may be called by the President or at the request of any three members.

Section D. A Faculty Member must be present at all meetings.

Section E. There shall be a meeting of all Freshmen women at the beginning of the year.

#### ARTICLE VII—VOTING

Section A. Six members shall constitute a quorum.

#### ARTICLE VIII—SPORTS

Section A. Major sports for women shall consist of Hockey, Basketball, Archery, and Badminton.

Section B. Minor sports for women shall consist of Tennis, Baseball, Ping Pong, Swimming, Hiking, and Fencing.

Section C. There shall be an upper-student Manager for each of the Major sports. Recommended.

Section D. Position of point-recorder shall be delegated to one of its members.

(a) Duties of the Managers:

1. Shall be responsible to the President for the administration of the sport.

2. Shall meet class captains of the sport for the purpose of explaining respective duties.

3. Shall give to the respective class managers their record books in which shall be kept attendance and training.

4. Shall notify the Point-Recorder of the number of points obtained by each person in her sport.

5. The Publicity Manager shall keep notices of women's athletics in the *Fiat Lux*.

6. The Publicity Manager shall take charge of any other publicity necessary to women's athletics.



7. The Publicity Manager shall keep a scrap book of *Fiat Lux* reports and present it to the Board at the end of the year.

#### ARTICLE IX—POINT SYSTEM

Section A. Points shall be awarded in the following manner:

In Major Sports, Hockey and Basketball.

- |   |    |
|---|----|
| a. Class and intra-mural team membership .....                | 5  |
| b. Champion team membership.....                              | 7  |
| c. All Alfred team membership.....                            | 10 |
| d. Honorable mention on All-Alfred team .....                 | 7  |
| e. Captains and Managers of class and intra-mural teams ..... | 1  |
| f. Time and Score Keeper .....                                | 1  |

Section B. Points shall be awarded in the following manner in Archery:

- |  |    |
|--|----|
| a. Membership on the telegraphic team .....    | 10 |
| b. Entering in any Tournament.....             | 2  |
| c. Placing first in any tournament adds .....  | 7  |
| d. Placing second in any tournament adds ..... | 5  |

Badminton:

- |   |    |
|---|----|
| a. Membership on Club Team—First String ..... | 10 |
| b. Others on Club Team.....                   | 5  |
| c. Placing 1st in tournament.....             | 7  |
| d. Placing 1st in consolation .....           | 5  |
| e. Placing semi-finals 2nd .....              | 5  |
| f. Entry .....                                | 2  |

Section C. Minor Sports:

- |   |   |
|---|---|
| a. Hiking, Swimming and Fencing.<br>Any girl participating in 75% of the activity shall receive ..... | 3 |
| b. Ping-Pong and Tennis:<br>Entry in tournament .....   | 2 |
| Placing first .....   | 3 |
| (Any person defaulting in the first round shall not receive credit.)                                  |   |
| c. Baseball:  |   |

Any girl representing her class team 1

Any girl on the championship team.. 2

d. Any girl participating in any unorganized athletic activity for 12 hours per semester shall receive one (1) point, providing she submit, at the time of the activity, a slip indicating the time, date, and the activity.

Section D. Any girl participating in a Sport's Day program shall receive 4.

Section E. A Member of the Women's Athletic Governing Board shall receive 5.

Section F. A girl is limited to fifteen points per year in any sport.

Section G. Any girl refereeing in as many games as required by team competition shall be awarded for officiation 5.

#### ARTICLE X—AWARDS

Section A. The Board shall sanction and approve all merited awards and shall recommend to the Student Senate that the approved standard blazers be presented at the time of the annual banquet of the year to all upperclass women who, having won the Varsity Old English "A", have been voted this honor by the Board.

Section B. Blazers are awarded upon outstanding qualities of leadership, ability, and personality.

Section C. The Old English "A" shall be awarded to all those girls who shall earn 65 points in athletics.

#### ARTICLE XI—AMENDMENTS

Section A. The constitution may be amended by a quorum vote at any meeting.

Section B. The proposed amendment must be presented at the meeting previous to the meeting of voting.

# TRACK AND FIELD RECORDS AT ALFRED UNIVERSITY Correct to Spring of 1941

## VARSITY

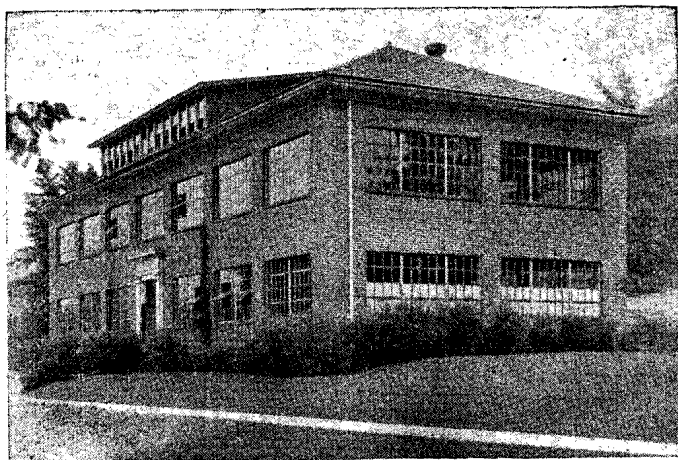
EVENT	TIME	NAME	CLASS	YEAR
100 yd. dash	10"	Newell Wallace	'34	1933
		Eric Hodges	'36	1934
		Howard Sephton	'37	1935
220 yd. dash	22"	Newell Wallace	'34	1934
		Eric Hodges	'36	1935
440 yd. dash	50.8"	Newell Wallace	'34	1934
880 yd. run	1:56.0	Emil Zbiegner	'30	1929
1 mile run	4:19.4	Wilbur Getz	'29	1929
2 mile run	9:44.2	Bradley Rendell	'41	1939
Unofficial	9:23.1	Bradley Rendell	'41	1939
120 yd. high hurdle	16"	Louis Schiffner	'36	1936
220 yd. low hurdle	25.3"	Louis Schiffner	'36	1935
Pole vault	12'10 $\frac{3}{8}$ "	Charles Clarke	'35	1934
Running high jump	6'1"	Walter Johnson	'41	1940

Running broad jump	22'9"	Joseph Majeske	'39	1938
16 pound shot	46'5 $\frac{1}{8}$ "	Mearl Greene	'42	1940
Discus	135'5"	Mearl Greene	'42	1940
Javelin	183' 7 $\frac{3}{8}$ "	Aaron Arnold	'38	1936
Mile relay	3:30.2"	Dawson '37, Giannasio '36, Minnick '36, Jones '37	'37	1935

## FRESHMEN

EVENT	TIME	NAME	CLASS	YEAR
100 yd. dash	10.1"	Frank Giannasio	'36	1933
220 yd. dash	23.0"	Howard Sephton	'37	1934
440 yd. dash	51.8"	Maynard Jones	'37	1934
880 yd. run	2:04.2"	Frank Morley	'41	1938
1 mile run	4:45"	Bernard Oldfield	'36	1933
2 mile run	10:07.4"	Elton Gamble	'42	1939
120 yd. high hurdle	17.3"	Carlos Morales	'41	1938

220 yd. low hurdle	27.8"	Bissell	'39	1936
Pole vault	11' 6"	Charles Clarke	'35	1932
Running high jump	5' 9½"	John Halpin	'40	1937
Running broad jump	21' 4"	A. W. Stuart	'29	1926
12 pound shot	50' 4"	Mearl Greene	'42	1939
Discus	129' 9"	Mearl Greene	'42	1939
Javelin	160'	Harold Glinsky	'41	1938
4-5 mile relay	2:43.5"	Roger Marks, Everett Leahy, Franklin Heasley, Warren Sephton	'43	1940
½ mile relay	1:34.0"	John McConell, L. Graham, Burton Chubb, Kenneth Robinson	'32	1928
1 mile relay	3:37.4"	Martin Stalman, James McFadden, Lewis Oburn, Frank Steele	'31	1928
Medley relay (880, 440, 220, mile)	8:03.3"	Edwin Lagasse, Clifford Leahy, Joseph Kelly, Eugene Burgess	'41	1938



Allen Laboratory

## 1940-1941 ATHLETIC SCHEDULES

### CROSS-COUNTRY

- Oct. 12—Colgate at Alfred  
 Oct. 18—Cornell at Ithaca  
 Oct. 26—Toronto at Alfred  
 Nov. 2—Open  
 Nov. 6—Open  
 Nov. 18—I.C.A.A.A.A. at New York  
 Nov. 25—N.C.A.A. at East Lansing, Mich.

Two additional meets to be scheduled

### VARSITY FOOTBALL

- Sept. 28—Cortland at Alfred  
 Oct. 5—St. Lawrence at Alfred  
 Oct. 12—Hofstra at Alfred  
 Oct. 19—Buffalo at Alfred  
 Oct. 26—Brooklyn at Brooklyn  
 Nov. 2—Clarkson at Potsdam  
 Nov. 9—Hartwick at Oneonta

### FRESHMAN FOOTBALL

- Oct. 19—University of Buffalo at Alfred  
 Oct. 26—Scranton-Keystone at Alfred  
 Third game to be scheduled

### WRESTLING

- Jan. 18—Rochester Mechanics at Alfred  
 Jan. 25—Toronto (afternoon) at Alfred  
 Feb. 5—Colgate (afternoon) at Hamilton  
 Feb. 6—Springfield at Springfield  
 Feb. 12—Buffalo (afternoon) at Alfred  
 Feb. 22—St. Lawrence at Alfred  
 Mar. 1—Buffalo at Alfred

### VARSITY BASKETBALL

- Dec. 7—Cornell at Ithaca  
 Dec. 10—Niagara at Niagara Falls  
 Dec. 13—McMasters at Alfred  
 Dec. 17—Hartwick at Alfred  
 Dec. 20—Christmas Vacation Starts  
 Jan. 6—Christmas Vacation Ends  
 Jan. 11—Ithaca at Alfred  
 Jan. 15—Hartwick at Oneonta  
 Jan. 18—Open

Jan. 22—Mid-Years

Jan. 25—Open

- Feb. 1—St. Bonaventure at Alfred  
 Feb. 3—Mid-Years End  
 Feb. 4—Hobart at Geneva  
 Feb. 5—Start of Second Semester  
 Feb. 7—Union at Schenectady  
 Feb. 8—R.P.I. at Troy  
 Feb. 12—Buffalo at Alfred  
 Feb. 14—Cortland at Alfred  
 Feb. 21—Clarkson at Potsdam  
 Feb. 22—St. Lawrence at Canton  
 Feb. 25—Allegheny at Alfred  
 Feb. 26—Buffalo at Buffalo  
 Mar. 5 and 6—Steuben-Allegheny Counties  
 Interscholastic Basketball Tournament

### FRESHMAN BASKETBALL

- Dec. 7—Cook Academy at Montour Falls  
 Dec. 10—Niagara University at Niagara  
 Dec. 13—R.B.I. at Alfred  
 Jan. 15—Syracuse Business Institute at Alfred

- Feb. 1—St. Bonaventure at Alfred  
 Feb. 4—Hobart at Geneva  
 Feb. 8—R.B.I. at Rochester  
 Feb. 12—Buffalo University at Alfred  
 Feb. 14—Jamestown Extension at Alfred  
 Feb. 25—Allegheny College at Alfred  
 Feb. 26—Buffalo University at Buffalo  
 One additional game to be scheduled

### TRACK

- Mar. 1—I.C. 4-A. (Indoor Championships) at New York City  
 Mar. 28—Indoor Interclass Meet at Alfred  
 Apr. 25—Penn Relays at Philadelphia  
 Apr. 26—Susquehanna University at Selinsgrove  
 Apr. 30—Ithaca College at Alfred  
 May 9—Middle Atlantic at Muhlenburg College, Allentown, Pa.  
 May 17—Colgate University at Alfred  
 May 24—Cortland at Cortland  
 May 30—I.C. 4-A. (Outdoor Championships) at New York City



Alumni Hall

## FRATERNITIES, SORORITIES, AND THE INDEPENDENTS

### FRATERNITIES

#### Lambda Chi Alpha

President—James Wygant  
Vice-President—Stanton Langworthy  
Secretary—Grant Tucker  
Treasurer—Bruce McGill

#### Kappa Psi Upsilon

President—Phillip Burdick  
Vice-President—Robert Weidel  
Secretary—Robert Burgess  
Treasurer—George Brown

#### Klan Alpine

President—Frank P. Maxwell  
Vice-President—Fred L. Cuneo  
Secretary—Jack Raineau  
Treasurer—Jack Haecker

#### Delta Sigma Phi

President—Kenneth W. Wheeler  
Vice-President—Carl A. Husted  
Secretary—Stan Gutheinz  
Treasurer—Robert Maas

#### Kappa Nu

President—Arthur Kaiser  
Vice-President—Irving Cotler  
Secretary—Herbert A. Berger  
Treasurer—Sanford Davidow

#### Theta Gamma (Agricultural School)

President—Harold Coleman  
Vice-President—Harry Gass  
Secretary-Treasurer—Carlton Jensen

#### Kappa Delta (Agricultural School)

President—John Dytman  
Vice-President—Robert Kellerman  
Secretary—Joseph Gorman  
Treasurer—Julian Plyter

## INTERFRATERNITY COUNCIL

### 1940-1941 Officers

President—Carl Kahn, Kappa Nu  
Vice-President—Edward Schleiter, Delta  
Sigma Phi  
Secretary—Joseph Meyer, Kappa Nu  
Treasurer—Robert Weidel, Kappa Psi Un-  
silon  
Interfraternity Sports Director—Ralph  
Rhodes, Klan Alpine

## CONSTITUTION

We, the men's fraternal organizations of Alfred University, in order to promote harmony and mutual understanding among the fraternities on the campus; to act as an interpreting medium between the faculty and the allied organizations on the campus of the University; to lay and enforce rules for governing all situations of common interest to the fraternities, do hereby adopt and agree to be governed by the following Constitution and By-laws.

### ART. I.—NAME AND OBJECT

Sec. 1. The name of this organization shall be "The Interfraternity Council of Alfred University."

Sec. 2. The object of this organization shall be to control and regulate all matters that may be determined to be of mutual interest to the various organizations herein represented.

### ART. II.—MEMBERSHIP

Sec. 1. The council shall be composed of two representatives who are members of either of the two upper classes (Junior

and Senior) from each member organization.

Sec. 2. Each fraternity shall be entitled to one vote in any meeting of the Council.

Sec. 3. Any new fraternity organized on the campus, upon approval by the faculty, must become a member organization of the Council.

Sec. 4. Representatives shall be elected during the first week of May, and shall act as an observing body in the remaining Council meetings of that year.

Sec. 5. By May 15, each fraternity shall purchase a bond of \$100 from the University Bank, said bond to be renewed by April 15 of each succeeding year. Failure to renew this membership by any member fraternity shall result in its forfeiture to the Interfraternity Council.

Sec. 6. Any member organization of the Interfraternity Council choosing to withdraw shall automatically forfeit its membership bond.

### ART. III.—OFFICERS AND DUTIES

Sec. 1. Officers shall be elected at the final meeting of the Council.

Sec. 2. The officers of the Council shall be a President, a Vice-president, a Secretary and a Treasurer.

Sec. 3. The duties of the officers shall be in general those pertaining to their respective offices by parliamentary custom.

Sec. 4. The Secretary shall furnish a copy of the minutes of each meeting of the Council to each member fraternity by the Monday following the night on which the meeting is held.

Sec. 5. The Treasurer shall pay out money only by the direction of the Council.

Sec. 6. The President shall be required to call a meeting of the Council the second

and fourth Wednesday nights of each month of the college year.

#### ART. IV.—TRIBUNAL

##### Part 1. *Membership.*

Sec. 1. There shall be a tribunal composed of a faculty member from each fraternity represented on the Interfraternity Council and a faculty member who is not a member of any Alfred fraternity, who shall act as chairman of the tribunal.

Sec. 2. Each fraternity shall select its representative to the tribunal during the first week in May.

Sec. 3. The Interfraternity Council shall elect the non-fraternity member.

Sec. 4. The members of the tribunal shall serve for one year unless re-elected.

##### Part 2. *Powers*

Sec. 1. The tribunal shall be a final court of appeal in all matters, and may be appealed to by any member fraternity of the Council.

Sec. 2. The tribunal shall have the power to impose all penalties.

##### Part 3. *Conduct Bonds.*

Sec. 1. There shall also be purchased and maintained a bond of \$50 for conduct offenses, the nature and magnitude to be determined by the tribunal.

Sec. 2. All fines shall be payable to the tribunal which in turn shall be given to the treasurer of the Interfraternity Council.

#### ART. V.—PLEDGING

Sec. 1. Kappa Nu shall be exempt from all rushing and bidding rules in the Interfraternity Council. This provision shall hold unless another Jewish fraternity should be formed. In that event all fraternities shall come under the ruling of the Council.

Sec. 2. No man shall have a pledge pin in his possession until pledged according to the by-laws of this constitution, nor shall he be considered pledged until he wears a pledge pin in the proper place, or has signified in writing his intentions of joining a given fraternity.

Sec. 3. No fraternity shall bid or pledge a man who matriculates the first semester until he has attended Alfred University through one closed season.

No fraternity shall pledge an eligible man who matriculates the second semester until he has attended through one closed season.

##### Sec. 4. *Rushing Rules.*

a. Closed season shall be defined as the period from the beginning of college instruction in the fall until the Tuesday that all bids are returned to the respective fraternities.

b. (1) During a closed season no eligible man is allowed in a fraternity house except for the time allotted each Monday, Wednesday and Friday evenings, and Saturday afternoons and evenings.

(2) During the closed season no fraternity shall be allowed to entertain more than five eligible men on Monday and Wednesday nights from 5:30 until 11:00.

(3) On Friday night of closed season from 7 until 12 P. M. each fraternity shall be allowed to entertain one-fourth of the eligible men selected by Article V. Not more than twenty cents per eligible man may be spent in entertaining the men.

c. On Saturday afternoons from 1:30 to 7 each fraternity may entertain ten men, and on the days of the home football games these ten men may be entertained from 1:30 P. M. until 12:00 P. M.

d. Representatives from each fraternity must meet at least four days before the first Friday of rushing and divide the eligible men into four equal groups or as

nearly equal as possible, which shall be guests at the different fraternities on successive Friday nights. (That is, each group shall visit each house at least once.)

Sec. 5. Pledging shall be subject to the following rules:

a. On the morning after the last rush party, each eligible man shall receive a preferential card from a clerk appointed by the Council which must be filled out and returned by the 6 o'clock mail that same night. On or before 6 p. m. of this same night, each fraternity must have in the hands of the clerk a list of the eligible men they will accept as pledges.

b. Each house shall be limited to 17 freshmen preferentials.

c. Each house shall be permitted to maintain 17 men in each class; a man's class to be considered the one with which he is connected upon entrance.

d. Honorary members shall be exempt from the quota but may not be pledged until the conclusion of the regular rushing season.

e. A list of all bona fide pledges must be posted by the clerk of the Council by 10 a. m. of the following Wednesday morning immediately after the closed season has terminated.

f. All eligible men must be in their place of residence from 7 p. m. to 8 p. m. the Tuesday evening after bids are sent in.

g. Silent period shall extend from the last Friday of rushing at midnight until Saturday at 6 p. m. Silent period is limited to merely saying "Hello" to an eligible man and prohibits the association of fraternity men in any manner whatever with eligible men.

h. The first four weeks of school shall be a non-rushing period, during which time Freshmen are forbidden to enter into or on fraternity property.

i. There shall be a closed season from the Wednesday after pledging until one week from the following Thursday at 6 p. m. After this time there shall be unlimited rushing.

j. Any house may pledge any eligible man other than a Freshman at any time. An eligible man is defined as any man who has never been connected with a fraternity and has been through one closed season, or a man who has been connected with a fraternity and has been through a closed season since depledging.

k. Each fraternity must charge its pledges at least \$9 yearly fee, and may charge any amount over that if it sees fit to do so.

Sec. 6. a. No rush party or part of a rush party shall be held in the home of, or sponsored by, an alumnus, honorary, or active member of a fraternity. No *Eligible Man* shall room or board in any fraternity house until he has been pledged by the fraternity. No fraternity shall approach any man when he has been pledged to another fraternity or has signified in writing his intention of being pledged.

b. No women shall take part in any rushing function at a fraternity house.

c. No fraternity shall pledge a man who has worn the pledge pin of another fraternity of this council until the beginning of the next school year. If a man should have a pledge pin taken from him, the council shall be informed by the fraternity whose pin he wore, and the circumstances concerning his case.

#### ART. VI.—INITIATION

Sec. 1. No man shall be formally initiated into any fraternity until he has attained an index of 1. for his first semester, or any subsequent official index.



Sec. 2. After a man has been initiated into a fraternity represented on this council he is not eligible for membership in any other fraternity during his stay in Alfred.

#### ART. VII

Sec. 1. All motions pertaining to reprimands, penalties, suspensions and expulsions shall be carried by a two-thirds vote.

Sec. 2. All amendments shall be carried by a unanimous vote.

#### ART. VIII

Sec. 1. These rules shall be subject to revision at any time throughout the school year by a unanimous vote, not previous to three weeks after the proposal.

Delta Sigma Phi  
Kappa Nu  
Kappa Psi Upsilon  
Klan Alpine  
Lambda Chi Alpha

#### FRATERNITY RUSHING

Rushing season is a difficult time for Freshmen. It is then you will need all your common sense. Snap judgments are easy to make, but often lead you into paths of action from which it may be difficult to withdraw.

Remember that a fraternity is only a small part of college and that a man has just as much chance to make a name for himself in college whether he belongs to a fraternity or not. Don't allow the alluring promises of fraternity to blind you to actual realities.

During rushing season the Freshman is, for the moment, the object of very special attention. Don't be led to think that the

treatment you receive will be continued for your special benefit the rest of the year. Try to discern the real character of the group and the individuals. Try to decide for yourself which fraternity you really care for most, and where you will make the best friends, where you will fit best. Remember you will be bound up with your group for your whole college career.

Remember that each fraternity has its good and its poor qualities. Discriminate, and choose the fraternity that has the greatest common interest for you in every way.

If you favor a particular one and it does not rush you, but you are rushed by some other, think carefully before you decide to join or not. It might be better to wait.

Beware of the "Mudslinger." Don't let others do your choosing for you. This includes your Freshman friends.

#### SORORITIES

##### 1940-1941 Officers

##### Pi Alpha Pi

President—Frances Fish  
Secretary—Jean Millspaugh  
Treasurer—Margaret Olney

##### Sigma Chi Nu

President—Claudia Wheeler  
Vice-President—Alice Schryver  
Secretary—Audrey Place  
Treasurer—Beatrice Nash

##### Theta Theta Chi

President—Peggy Humphrey  
Vice-President—Annette Irving  
Secretary—Irene Pearson  
Treasurer—Barbara Hill

## INTERSORORITY COUNCIL

### 1940 - 1941 Officers

President—Claudia Wheeler, Sigma Chi Nu  
Secretary-Treasurer—Margaret Olney, Pi

Alpha Pi  
Other Members—

Jane Morris, Sigma Chi Nu  
Betty Tim Kaiser, Theta Theta Chi  
Marilynn Burch—Pi Alpha Pi

## CONSTITUTION

Art. I. NAME AND OBJECT—Sec. 1. The name of this organization shall be the Women's Intersorority Council of Alfred University.

Sec. 2. The object of this organization shall be to control all matters which may be determined to be of interest to the various organizations herein represented.

Art. II. MEMBERSHIP—Sec. 1. The council shall be composed of two representatives from each woman's fraternity, at least one of whom shall have served previously.

Sec. 2. Each representative shall be entitled to one vote in each council meeting, except the President who votes only in case of tie.

Sec. 3. Any new woman's fraternity on the campus, being recognized by the faculty, automatically becomes a member of the council, after signing the Constitution.

Art. III. OFFICERS AND DUTIES. Sec. 1. The officers shall consist of a President, who shall be a Senior and a Secretary-treasurer.

Sec. 2. The officers of the Council shall be elected at the last meeting of the college year, when the old and new Councils shall meet together. The new Council alone shall have power to vote at this election.

Art. IV. POWERS—The Council shall have power to enforce all enactments, regulations, etc., within its jurisdiction as defined by the articles and by-laws of this constitution.

Art. V. RUSHING—Sec. 1. A Rushee is defined as meaning a Freshman woman or transfer.

Sec. 2. Rushing Season:

(a) There shall be a *closed* period of the first semester. At the end of this time rushing shall be done in an open period.

(b) *Open* period shall be the first two weeks of the second semester.

(c) *Closed* season shall include only "dutch treat" entertainment, and a sorority girl shall not accompany a rushee to any activity other than college functions.

Saturday afternoon rushing at the house is still permitted under arrangements made by the Council. There shall be no entertainment for a sorority by a resident active member, an honorary, or an alumna.

(d) During closed season sorority girls will be allowed to visit rushees at the Brick or their place of residence only during relaxation periods as described by the Brick House Rules.

(e) Open season shall include entertainment, with expense, at the houses, to be arranged by the council during closed season.

(f) Honorary members may be invited to the house at the times of entertaining the Freshmen.

(g) Sorority girls may not take rushees to their homes with them.

(h) All rules apply to vacation as well as to the school session.

Art. VI. BIDDING AND PLEDGING—Sec. 1. A bulletin will be issued with the rules of preferential bidding stated. To this bulletin shall be added a financial statement denoting the living expenses of each sorority, including price of room, board

and dues. This shall be read at a meeting of "rushees" just before bids are sent out.

Sec. 2. Bidding shall be done by the preferential system in the fall.

Sec. 3. Upon receiving preferential slip a "rushee" shall make her decision for a sorority in absolute secrecy.

Sec. 4. Silence shall last from the time bids are sent out until they are accepted.

Sec. 5. Silence is defined as merely saying "hello."

Sec. 6. Sororities shall not be discussed with "rushee."

Sec. 7. A disinterested person to act as Clerk to the Council. (The duties shall be defined by the Council.)

Sec. 8. No one shall consult the clerk during bidding except in vote of the Council.

Sec. 9. All problems of bidding shall be dealt with by the Council.

Sec. 10. The clerk together with the council shall call a meeting of all rushees on a Monday night at the end of the two week period. At this meeting preference slips shall be given to such rushees as whose names appear on the preference lists of the sororities previously submitted to the clerk. These slips are marked, signed and handed to the clerk at this time.

Sec. 11. Bidding of honorary members shall take place after Christmas recess.

Art. VII. INITIATION—Sec. 1. Each fraternity shall determine the date of its initiation services.

Sec. 2. No woman shall be formally initiated into any fraternity until she has attained an Index of 1.0.

Sec. 3. After a woman has been initiated

into a fraternity represented on this Council, she is not eligible for membership in any other fraternity represented on this Council during her stay in Alfred.

Art. VIII. VOTING—Sec. 1. All voting shall be done by secret ballot unless otherwise designated.

Sec. 2. All matters pertaining to reprimand, penalties, suspension and expulsion shall be carried by a 2-3 majority vote.

Art. IX. MISDEMEANORS—Sec. 1. Any fraternity member who belittles, or attempts to belittle or degrade any other fraternity in the eyes of any person by word or action, shall be considered as having committed a misdemeanor requiring judicial action by the Council.

Sec. 2. If a sorority woman has broken a council rule, she shall have a hearing with the council, in which the two representatives of that sorority shall have a hearing; then the other four Council members, together with the disinterested person, shall decide the punishment unanimously.

Sec. 3. Any sorority or any of its members breaking a rule of the council shall be penalized as a house, such penalty to be decided by the council.

Art. X. RESIGNATION—No representative shall resign without the consent of the Council and her fraternity.

Art. XI. MEETINGS—Special meetings may be called at any time by the President, the Secretary-treasurer or by the decision of three members.

Art. XII. AMENDMENTS—Sec. 1. Amendments to this constitution may be suggested by any fraternity. The Council may vote upon it at any time after it has been submitted to the fraternities.

Sec. 2. All amendments to be carried must receive unanimous vote of the Council.

## INDEPENDENT GROUP

1940 - 1941 Officers

President—John Hallock  
Vice-President—Arthur Petri  
Secretary-Treasurer—Sophia Perry

The past year has seen a great many worthwhile projects undertaken by the Independent Group of Alfred University. Expert leadership and splendid group cooperation have made possible a number of unusually good social functions. Last year a group of Independent men established the extremely successful Brookside enterprise. This consisted of living and boarding accommodations for approximately fifteen men.

The Independents are rapidly becoming an important faction in campus affairs.

## CLUBS AND HONORARY SOCIETIES

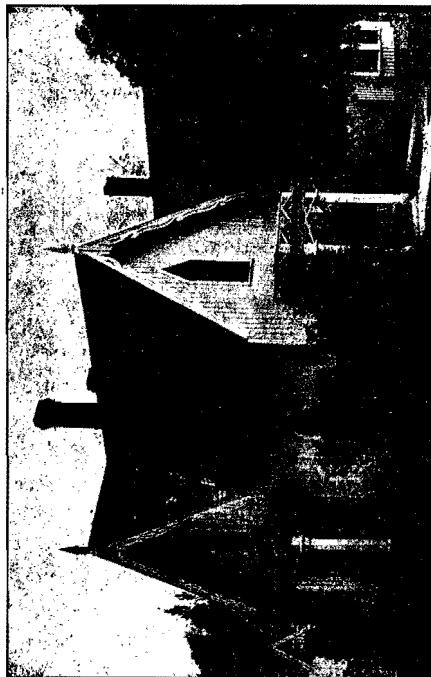
### AMERICAN CERAMIC SOCIETY

1940 - 1941 Officers

President—Robert Whitwood  
Vice-President—Cranston Shelley  
Secretary—Lawson Mason  
Treasurer—Morris Musgrave

An organization for all the students enrolled in the General Ceramic Engineering and Glass Technology courses and a national organization for all the leading men in the Ceramic Industry. The purpose of the student group is to bring a closer relationship between the student and the Industry.

Several important men in the field are attractions for some of the meetings of the year. Dr. Hall, research engineer of Onondaga Pottery Co., Mr. L. I. Shaw, research engineer for the Western Electric Co., and



THE GOTHIC

other distinguished men in the industry have spoken before the Society.

Each year the seniors of the Ceramic College feature the annual St. Patrick's Festival, at which time some outstanding senior is chosen to represent St. Pat, the patron saint of all engineers. Two days of festivity mark this affair which is climaxed by the grand ball at which the campus queen is crowned.

#### CERAMIC GUILD

##### 1940-1941 Officers

President—William G. Warr, Jr.  
Vice-President—Olwen Williams  
Secretary—Gwendolyn Hill  
Treasurer—Janet Howell

An organization for the Ceramic Art students. It was organized to give experience and stimulate interest in commercial methods of pottery making. Members are chosen from the junior and senior art students whose work and interest qualifies them. Some of the proceeds from annual sales are retained by the members, the freshmen and sophomores working gratis.

#### 1-3-6 CLUB

##### 1940-1941 Officers

Chairman—John Bohrer  
Vice-Chairman—John Breiterstein  
Secretary—Leo Schifferli, Jr.

The 1-3-6 Club was formed by the students enrolled in the Ceramic College for a furtherance of interest in glass. All students taking the Glass Technology course are eligible for membership. The meetings are held every two weeks and these meetings feature talks by the students themselves who have had industrial experiences in this field. While the club has been functioning only a short time, the outlook

for it is very bright, and the officers and members are looking forward to a most successful year.

#### MATHEMATICS CLUB

##### 1940-1941 Officers

President—Peter J. Keenan  
Secretary—Elizabeth Olszowy  
Treasurer—Ruth Lang

The Math. Club is an organization on Alfred's campus designed to promote an acquaintance with topics not ordinarily presented in classroom study. The Club was fortunate in having some interesting lectures by members of the faculty and outside speakers.

#### FORENSIC SOCIETY

##### 1940-1941 Officers

President—Franklin P. Morley  
Secretary-Treasurer—Peter Keenan  
Manager-Vice-president—Herman Elcborn

The Forensic Society is the debating society of Alfred University. Emphasis is on prepared talks and discussions on important public issues. Last year Alfred participated in a number of important debates, and arrangements are being made for her continued participation this year.

#### ASTRONOMY CLUB

The Astronomy Club is a club formed by students in astronomy wishing to learn more of the universe beyond the range of the naked eye. Meetings at intervals provide students with the opportunity of "star gazing" and discussions of the interesting phases of the universe about us. Occasional trips are made to nearby observatories.

#### INTERNATIONAL RELATIONS CLUB

The International Relations Club is an active group on the campus, holding fre-

quent discussions of important national and international questions. It is affiliated with the Carnegie Foundation of Peace.

#### VARSITY "A" CLUB

The Varsity "A" Club was formed in the interest of bigger and better athletics and the promotion of true fellowship among athletes. The club is composed of those athletes who have been duly voted a certificate for varsity athletics and are furthermore awarded the Varsity "A" sweaters for this achievement. The most important purpose of the club is to promote athletics in Alfred, and create principles of true sportsmanship.

#### DEUTSCHER VEREIN (German Club)

##### 1940-1941 Officers

President—Herman Eichorn  
Vice-President—Eugenie Reb  
Secretary-Treasurer—Grace Schlisman  
Faculty Advisor—

Professor Kasper O. Myrvaagnes

Membership in the German Club is offered to all students interested in German. The club meets semi-monthly, offering an opportunity to students of gaining a more comprehensive knowledge of German and Germany through conversation, games, talks, readings, slides, and motion pictures.

#### SODALITAS LATINA (Latin Club)

##### 1940-1941 Officers

President—Fay Greenberg  
Vice-President—Frances Fish  
Secretary-Treasurer—Jean Millsbaugh

The Latin Club is an organization to furnish those students interested in Latin a further opportunity of learning the cus-

toms of the Roman people and of relating these to modern life. The meetings, held monthly, are partly social and partly educational.

#### LE FLEUR DE LIS (French Club)

##### 1940-1941 Officers

President—Courtney Lawson  
Vice-President—Andree Place  
Secretary—Doris Simpson  
Treasurer—Rita Hussong

The Fleur de Lis is a student organization formed for the purpose of attaining greater fluency in the speaking of French. The club plans an extensive "French Week Program" in the spring and sponsors French movies during the year. At the bi-weekly meetings, members often present papers on appropriate topics. Membership is open to all French majors.

#### FOOTLIGHT CLUB

The Footlight Club is an organization to promote the best in dramatic production. Its members are chosen from those who show the most ability for acting or stage production. Much of the success of the University's dramatic season is due to the cooperation of the members of the Footlight Club.

#### THETA ALPHA PHI

The New York Alpha Chapter of Theta Alpha Phi, the national honorary dramatic fraternity, is located at Alfred University. Its membership is made up of those who have shown unusual interest in, and have particular aptitudes for, dramatic production in its various phases. Theta Alpha Phi, with the assistance of the Footlight Club, presents the "Fresh-Soph Plays" early

in the Fall of each year in an attempt to ferret out outstanding material from among the lower-classes on the campus. They also present at least two full length plays during the year.

#### BLUE KEY

##### 1940 - 1941 Officers

President—James F. Lynch  
Vice-President—Joseph Utter  
Secretary—Russell Pardee  
Treasurer—Ernest Nadelstein

The Blue Key is an honorary fraternity composed of upperclassmen, recognized for their character, scholarship, student activities, leadership, and spirit of service on the campus. As a service organization, the Blue Key welcomes visiting groups on the campus, arranges intramural athletic contests, and performs other services as occasion arises. The Freshman Court, now reorganized, is under the jurisdiction of the Blue Key in connection with the Student Senate.

#### ALPHA TAU THETA

##### 1940 - 1941 Officers

President—Betty Tim Kaiser  
Secretary—Elaine Richtmyer

It is an honorary athletic fraternity for women of Alfred. Its aims are the development of loyalty to the ideals of true sportsmanship and the recognition and emphasis of worthwhile achievements in sportsmanship and leadership. This organization cannot include in its members more than one-tenth of the women of the student body and these members must maintain an index of 1. The director of athletics for women is always an associate member.

#### KERAMOS

##### 1940 - 1941 Officers

President—A. John Haecker, Jr.  
Vice-President—Robert Whitwood  
Secretary—Frank P. Maxwell  
Treasurer—Lewis A. Kluth

Keramos is the National Professional Engineering Fraternity. Its membership is composed of students from ceramic colleges throughout the country, and men particularly prominent in the field of ceramics. The principal object of the fraternity is to promote and emphasize scholarship and character in the thoughts of the ceramic students, to stimulate mental achievement, and to promote interest in ceramic engineering. Membership is based on scholastic record and interest in ceramics and is the highest honor a student engineer can attain.

#### ETA MU ALPHA

##### 1940 - 1941 Officers

President—Cranston Shelley  
Vice-President—Robert Whitwood  
Secretary—John S. Breitenstein

Eta Mu Alpha, honorary scholastic fraternity on Alfred's campus, has for its goal the promotion of better scholarship and keener interest in things intellectual among the student body of the University. Only Juniors with an accumulative index of 2.4 and Seniors with one of 2.2 are eligible for this honor.

#### PHI SIGMA GAMMA

Phi Sigma Gamma, the women's honorary fraternity of Alfred, was founded in 1925 to provide an incentive for achievement among the women students of the university. The organization aims "to be a positive factor in Alfred's growth, to

maintain and extend a spirit of co-operation and good will between fraternity and non-fraternity groups, and to uphold true Alfred ideals and express these ideals in service to Alfred." To this end, each year, are elected to membership those women who have best expressed these ideals by outstanding loyalty to the university, personal character, scholarship and service. Eligibility is limited to twenty-five of the women of the two upper classes.

#### SPIKED SHOE

##### 1940 - 1941 Officers

President—Franklin P. Morley  
Vice-President—Joseph Kelly  
Secretary-Treasurer—Milton Tuttle

The Spiked Shoe is a branch of the National Collegiate Society of Spiked Shoe which is for the promotion of track and cross country. The purpose of this organization is to bring together in a closer bond all those interested in track and cross-country and to this end, the members may be chosen, not only from among letter men but also from among those whose main interest is track and cross country. This society fosters interclass and intramural track meets, and inculcates interest in sub-collegiate institution, and to further the aims of track and cross country by serving as officials for meets among undergraduates and High Schools.

#### PI GAMMA MU

The national honorary social science fraternity was brought to the campus in 1927 to awaken interest and encourage underclass study in the field of social science. Membership includes a limited number of the faculty and upperclass members who must have an average index of 1.5 and 20 hours of study in the social sciences.

#### PHI PSI OMEGA

##### 1940 - 1941 Officers

President—Franklin P. Morley  
Vice-President—Bruce McGill  
Secretary—Elson S. Gamble

The aim of this honorary fraternity is to recognize men for their scholastic record, athletic ability, character and loyalty to Alfred. It is hoped that through striving to gain membership in this organization the high ideals of Alfred will be maintained.

#### ALFRED ARCHERS CLUB

##### 1940 - 1941 Officers

President—Kay Kastner  
Secretary—June Chisholm  
Treasurer—Eva Hanneman  
Program Chairman—Eloise Bassett

The purpose of the Alfred Archers Club is to promote student interest in this sport. The Club sponsors tournaments for beginners as well as for advanced archers. During the past year this Club has competed with other colleges in this splendid sport.

#### SKI CLUB

Alfred, being situated as it is in rolling country, lends itself most admirably to skiing. Last winter the Club visited several other universities besides making use of the splendid facilities at hand for this sport. Plans are now being made for an even more active season this winter.

#### AIRO CLUB

The Airo Club was formed to coordinate the activities and interests of the air conditioning majors in the Agricultural School. Plans have been laid to visit many large industrial concerns during the year.



## SERVICE CLUB

The purpose of this Agricultural School club is to promote a better understanding of the air conditioning, radio, and general electrical field, and to encourage closer coordination in the service group.

## SHUTTER AND LENS CLUB

The growing interest in photography has manifested itself by the organization of the "Shutter and Lens". Here, dormant interests are activated and requisite skills for the perfection of the art are acquired. The fully equipped dark room, including an enlarger, has been made possible by the regular attendance and group sponsorship of meetings. Because of the keen interest in this activity, a series of exceptionally fine programs have been presented, being punctuated frequently with social affairs and picture hikes.

## ELECTRICAL ASSOCIATION

This growing organization was formed three years ago by electrical students of the Agricultural School. This club is fulfilling a twofold purpose by being both an educational and social group. The program committee sees to it that there is a happy balance between social functions and technical discussions conducted by informed speakers.

## HORN AND HOOF CLUB

The Horn and Hoof Club is the student organization for Animal Husbandry majors of the Agricultural School. Each year the club undertakes several projects, and last year the photographing of animals and construction of a board to measure calf growth was undertaken. Student reports on the newer phases in the animal husbandry field keep up with all new developments. In this

manner the Club fulfills its motto, "More and Better Milk".

## 'HORTUS CLUB

Formed in order to supplement technical training as commercial florists and landscape artists, this Agricultural School club has speedily become an interest center for formal speaker's meetings and round table discussions. Trips to distributor's and grower's places of business make for valuable contacts.

## MARKETEERS CLUB

The Marketeers Club was formed in November, 1939, by a group of interested members of the class in marketing. The aim of the club is to supplement class lectures and discussions with meetings to which executives and marketing specialists are invited. In addition to the discussions, the club hopes to take at least one field trip a year. Although first organized as a club for Agricultural students, it has proven itself to be a very valuable organization for students of Economics in the Liberal Arts College.

## DAIRY SCIENCE CLUB

The Dairy Science Club was organized by students in the Dairy Department of the Agricultural School who were primarily interested in milk and its allied technical phases. The motive of this organization is to integrate the activities of the dairy majors and to provide an extra-curricular means of approaching a better understanding of the dairy industry.

## FARM MACHINERY CLUB

From the young Farm Machinery course in the Agricultural School has evolved this

very active organization. Its purpose is to promote better scholarship and better fellowship among those interested in this field of work.

#### RADIO CLUB

To give students in the Radio Servicing course in the Agricultural School and all other interested University students an opportunity to do experimental radio work was the reason for organizing this club. Work will be resumed this Fall on the Club's new 1940 frequency modulation receiver, and many other interesting and worthwhile projects are being planned.

#### CLASS OFFICERS FOR 1940-1941

##### SENIORS

President—Russell Pardee  
Vice-President—Morris Musgrave  
Secretary—John Trowbridge  
Treasurer—Franklin Morley

##### JUNIORS

President—Jane Morris  
Vice-President—Ralph Rhodes  
Secretary—Irving Sapperstein  
Treasurer—Richard Peck

##### SOPHOMORES

President—Robert Starr  
Vice-President—Winston Report  
Secretary—Jane Lawrence  
Treasurer—Scott Burk

#### ALFRED UNIVERSITY FORUM

Alfred University, realizing the value to be derived from a well balanced series of cultural and entertaining programs, has this year assembled a group of five attractions that are *par excellence*.

All duly enrolled students in the College of Liberal Arts and the College of Ceramics may attend these splendid programs without cost.

Chaplain James C. McLeod is the chairman of the Alfred University Forum and will be assisted by the Forum Committee, on which both the faculty and the student body are represented. The Committee for 1940-1941 consists of eight from each group.

The faculty members are:

Chaplain James C. McLeod, Chairman  
John Reed Spicer, Counselor to Prospective Students

Dean A. E. Whitford  
Professor Charles M. Harder  
Professor Ada Becker Seidlin  
Doctor S. R. Scholes  
Professor H. O. Bardick  
Professor C. Duryea Smith, II

The student members are:

Margaret Aylor, Richard Humphrey,  
Betty Tim Kaiser, Douglas Manning,  
Sophia Perry, Paul Bruce Pettit, Audrey Place, William Warr.

#### FORUM PROGRAM FOR 1940-1941

Oct. 29, 1940—Arthur Kent: American bass-baritone, winner of the Metropolitan auditions prize, and member of the Metropolitan Opera Company.

Dec. 10, 1940—Vincent Sheean: famed American correspondent and author (*Personal History; Not Peace But A Sword; etc.*).

Jan. 14, 1941—Cornelia Otis Skinner: America's premier monologist and author of numerous humorous books (*Excuse It, Please; Dithers and Jitters*; etc.).

Mar. 10 and 11, 1941—The Stradivarius Quartet (Wolfe Wolfinsohn, Bernard Robbins, Marcel Dick, and Iwan d'Archambeau): internationally famous string quartet. They will give two informal afternoon programs, assisted by Prof. Ada Becker Seidlin of Alfred University, and one evening concert.

Apr. 16, 1941—Dr. Will Durant: distinguished philosopher and author of many best sellers (*The Story of Philosophy; The Life of Greece; Transition*; etc.).

## STUDENT PUBLICATIONS

### FIAT LUX

Editor-in-Chief—Jack B. Moore  
Business Manager—George V. Ward

All freshmen, especially those who are interested in journalism as a profession, have an excellent opportunity for practical experience in newspaper work in *The Fiat Lux*, Alfred University's weekly student newspaper.

*The Fiat*, as it is referred to in campus jargon, has always maintained a high rating among the college and university publications of the Intercollegiate News Association of the Middle Atlantic States and is expected to reach even greater heights this year.

The purpose of *The Fiat*, as it is outlined in its constitution, is "to report accurately the news of students, faculty, and alumni, to comment editorially on all matters affecting college students, to seek constant improvement in the journalistic ability of the staff, to reflect trends in edu-

cation, and to present an accurate picture of Alfred University to the outsider".

A six-week's trial period is conducted at the beginning of each year for candidates for reporters' positions on the staff. At the end of the six weeks the editorial staff votes upon the candidates who are recommended by the editors of each department. The same procedure is followed in electing business staff members. The opportunity for election and advancement to an editor's position is excellent for the reporter who is willing to work and who shows aptitude, ability, and interest.

*The Fiat Lux* Constitution may be found at the Publications Office in Burdick Hall for further information.

### THE KANAKADEA

Co-Editors-in-Chief—Saymour Barr,  
James Reardon  
Business Manager—Arthur Kaiser  
Associate Editor—Charles Rosenberg

The *Kanakadea* is the Alfred University yearbook, and contains a record of the activities of all four classes during the college year at the end of which it is published. Editor and business manager of the *Kanakadea* are elected by the staff from competing upperclassmen with previous experience on the book. Subordinate positions—class editors, literary assistants, and many others—are chosen by the editors from all four classes. Each Alfred student subscribes to the *Kanakadea* on matriculation.

### THE ARGOSY

Editor-in-Chief—Irving Sattell  
Business Manager—Frederick Neidlinger

The *Argosy* is the yearbook of the Agricultural School and has as its aim to present a graphic record of the students and

activities of the "Ag" School. The staff is appointed each year on the basis of talents and ability and willingness to serve.

The *Fiat Lux* and the *Kanakadea* are edited in the Publications Office, first floor of Burdick Hall. The *Argosy* is edited in the Agricultural School.

#### ALFRED UNIVERSITY HANDBOOK

1940-41 Editor-in-Chief—Paul Bruce Pettit

1940-41 Agricultural School Assistant—Donald Emens

The *Handbook* is published each Fall by the A.U.C.A. with the purpose of giving the incoming freshmen and others connected with the University a listing of important campus constitutions, clubs, organizations, officers of the various groups, athletic schedules, and other information that is of value and interest to the campus.

## MUSIC

MALE GLEE CLUB is a group of sixteen men directed by Prof. Ray W. Wingate, the positions being competitive. Besides day trips to neighboring towns, the club makes an extended concert tour including New York City during spring recess.

WOMEN'S GLEE CLUB under the direction of Mrs. John Reed Spicer is also on a competitive basis. Short trips to near-by towns and several local concerts make up the year's work.

The AGRICULTURAL SCHOOL MALE GLEE CLUB, directed by Mrs. S. R. Scholes, is a group made up of a score of the best male voices in that School. Several concerts, both in Alfred and out of town, are arranged for each year.

THE WOMEN'S GLEE CLUB OF THE AGRICULTURAL SCHOOL, also capably directed by Mrs. S. R. Scholes, makes several out-of-town appearances each season and lately has joined forces with the Men's Glee Club in a number of its engagements.

UNIVERSITY BAND, directed by Robert K. Howe, is open to all who play band instruments. Local concerts and short trips, besides the usual performances at pep rallies and football games, are included in plans for next year.

UNIVERSITY ORCHESTRA is also on a competitive basis with home recitals scheduled.

#### ORGAN VESPERS

Ray Winthrop Wingate, Organist

Each Friday evening from seven-thirty to eight o'clock at the Village Church, October 29 to April 28.

#### DAVIS MEMORIAL CARILLON CONCERTS

Ray Winthrop Wingate, Carillonneur

Friday Concerts—7:30 to 8:15 P. M.

Sunday Concerts—3:00 to 4:00 P. M.

(This schedule is effective from April 28 until October 29. At other times the Friday concert is from 5:00 to 5:30 P. M.)

UNION UNIVERSITY CHOIR is directed by Mrs. Ramon Reynolds. Try-outs are held at the beginning of the year for those who desire to join. Special Christmas music is the big feature in the choir program for each year.

SEVENTH DAY BAPTIST CHOIR, under the leadership of Ray W. Wingate, furnishes music for Sabbath day services.

## COLLEGE SONGS AND CHEERS

### ALMA MATER

Nestled away 'mid the Empire State hills,  
'Neath the watch-care of sentinel pines,  
Where the murmuring song of the brook  
    hums along,  
And a favoring sun ever shines;  
In a valley so fair where the forest trees  
    share  
Dominion o'er hillside and glen,  
Stands the pioneer college of Western New  
    York—  
Alfred, the mother of men.

—Chorus—

Hail to thee, Alfred, thou guide of our  
    youth,  
Sweet, benign mother, all hail!  
Sing out thy anthems of duty and truth;  
May thy clear ringing music ne'er fail.

She was founded in toil, cemented with  
    blood,  
And nurtured thro' yearnings and tears,  
Her treasure the hearts of brave heroes  
    who stood  
Undaunted throughout trying years:  
Each stone was a prayer and her battle-  
    ments there  
Have memories of purposes strong,  
Staunch daughters and sons are her mon-  
    uments fair,  
And they lift up the grateful song.

—Chorus—

Others may boast of prestige and size,  
Of numbers and treasure and fame  
But Alfred's pride lies in manhood's clear  
    eyes,

And womanhood's high stainless name.  
O Alfred, dear Alfred, thy fame will abide  
With Kenyon and Allen and Main  
With Davis the builder and Titsworth our  
    guide,  
May Norwood her power maintain.

—Chorus—

### OUR COLLEGE A. U.

Alfred's our college, hail Old A. U.  
For the Varsity team give a cheer,  
Each manly player so sturdy and true,  
Fights on the team without fear,  
Encourage each fellow to play a swift game,  
And follow the ball best he can:  
And when the foes of old Alfred draw nigh,  
To fight for her prestige and fame.

—Chorus—

Come give a cheer for your College,  
Root for old Alfred A. U.  
Cheer her when she is victorious,  
Ever be loyal and true.  
Purple and Gold are her colors,  
Loyal in spirit A. U.  
Urge her men on to the victory,  
To the praise and the fame of A. U.

Aye and forever, be loyal to her,  
With the Varsity spirit let's sing.  
Strong on the line up, and swift in the  
    backs,  
Shout 'till the loud echoes ring—  
With spirit and vigor for Alfred we'll cheer.  
Your whole heart put into the game,  
And when the foes of Old Alfred draw nigh  
We'll fight for her prestige and fame.

—Chorus—

## CHEER FOR ALFRED

We are out to cheer for Alfred,  
We will help her win the day,  
Make her gain athletic vict'ry,  
By our shouts of ray! ray! ray!  
Alfred, O!  
Purple and the gold triumphant,  
Waving 'neath a smiling sky,  
Make us say we'll fight for Alfred  
Till the years have all rolled by.

## SONG OF CITIES

Sing a song of cities, roll dem cotton bale,  
Nigger ne'er so happy as when he's out of  
jail.  
Norfolk for its oysters, Boston for baked  
beans.  
Alfred for pretty girls, but for niggers  
New Orleans.

—Chorus—

I've been working on the railroad, all the  
live long day.  
I've been working on the railroad just to  
pass the time away.  
Don't you hear the cap'n shouting; rise up  
so early in the morn.  
Don't you hear the darkies calling, Oh  
Dinah, blow your horn?

Sing a song of colleges, tell you where to go,  
Harvard for its knowledge, Cornell for a  
row,  
Princeton's wealth, or Amherst's pride, for  
them naught do we care.  
For old A. U. is strong and true, and for  
her we'll do and dare.

—Chorus—

## WE'RE PROUD INDEED

We're proud indeed of you football men,  
Um, hum and a little bit more.  
We cheer for you with all our might,  
Um, hum and a little bit more.  
Although we can't be very eloquent, we'll  
tell you o'er and o'er,  
We love you true, indeed we do.  
Um, hum and a little bit  
Hum, and a little bit  
Um and a little bit more.

## ON SAXON WARRIORS

On Saxon warriors,  
The Purple and the Gold defend;  
On Saxon warriors,  
Ever on like men.  
Crash thru the opponent's line  
And victory will come our way  
Fight, Fight for Alfred,  
And she will win the day.

## OH, HERE WE ARE

Oh, here we are! Oh, here we are!  
You see us marching down the street.  
You hear our cry: "To do or die,  
We have the team that can't be beat.  
We have!" (shouted)  
So give a cheer, a lusty cheer,  
And let the echoes carry true,  
With a tramp, tramp, tramp,  
And a stamp, stamp, stamp,  
For the team of old A. U.!

## SONG OF THE BELL

By the roaring, roaring banks  
Of the old Kanakadea,  
Oft I've lingered in the springtime long  
ago;  
While the waters rushed along,  
And the hills took up the song;  
And a gentle voice was calling sweet and  
low.

—Chorus—

O, I hear the echoes ringing from the belfry  
on the hill.  
And the song inspires my heart to do and  
dare;  
Calling me to love and duty, calling me  
to faith and prayer,  
For the bell is ringing, ringing, ringing  
still.

When the autumn days were on,  
And a brilliant crimson show  
Where the Alfred hill-side glory met the  
sky,  
Voices whispered in the breeze  
While I sat beneath the trees,  
And communed with master minds of  
days gone by.

—Chorus—

O, the days of frost and snow;  
O, the coasters' ruddy glow;  
O, the evening's long delight with com-  
rades dear,  
When we talked on mighty themes,  
Or indulged in happy dreams  
Of our victories in the future hov'ring  
near.

—Chorus—

Now my hair is turning gray,  
For those days have passed away  
But their mem'ry lingers sweet and  
sweeter yet;  
And my fireside's evening cheer  
Seems to bring old Alfred near,  
And the faces which my heart can ne'er  
forget.

—Chorus—

## RAY RAY SONG

Way up in Allegany  
Neath the shade of sheltering pines.  
There stands a little college  
That's for training noble minds.  
And when they get together  
On the gridiron, field or track,  
You hear the students give their yell  
And bring the victory back.

—Chorus—

Oh! Ray! Ray! Ray! Ray! Ray!  
Hear the students yell.  
Ray! Ray! Ray! Ray! Ray!  
Notes of victory tell.  
Oh! Ray! Ray! Ray! Ray! Ray!  
Better move along  
When you hear the students  
Sing their Ray Ray! song.

Oh here's the little college  
That will help you do your best.  
Her girls are true, her men are strong.  
They always stand the test,  
And when they get together  
On the gridiron, field or track,  
They put their shoulders to the wheel,  
And bring the victory back.

—Chorus—

## COLORS

Purple and Gold

---

## YELLS

### DOUBLE "A"

AL - - FRED      AL - - FRED

A - - - L

F - - - R

E - - - D

AL - - FRED

TEAM! TEAM! TEAM!

### VARSITY

V - A - R - S - I - T - Y

VAR - SI - TY    VAR - SI - TY

A - L - F - R - E - D

AL - FRED

TEAM! TEAM! TEAM!

### TRIPLE "A"

A - A - A

L - L - L

F - F - F

R - R - R

E - E - E

D - D - D

AL - FRED AL - FRED AL - FRED

TEAM! TEAM! TEAM!

## LOCOMOTIVE

A - - L - - F - - R - - E - - D

A - L - F - R - E - D

A-L-F-R-E-D

ALFRED! ALFRED!

TEAM! TEAM! TEAM!

### BEAT

Beat .....

Beat .....

Beat .....

Fight - Alfred - Fight

Fight - Alfred - Fight

Beat .....

Team! Team! Team!

TEAM YEA-TEAM

T-E-A-M Yea-Team

T-E-A-M Yea-Team

T-E-A-M Yea-Team

### ECHO

A - - - - A

L - - - - L

F - - - - F

R - - - - R

E - - - - E

D - - - - D

ALFRED! ALFRED!

ALFRED!

TEAM! TEAM! TEAM!



## FIGHT

## MEMORANDUM

AL - - - - FRED  
FIGHT! FIGHT! FIGHT! FIGHT!  
FIGHT!

AL - - - - FRED  
FIGHT! FIGHT! FIGHT! FIGHT!  
FIGHT!

ALFRED! ALFRED!  
TEAM! TEAM! TEAM!

## CHEERLEADERS

Head Cheerleader—Jack Brown

Assistant Cheerleader—Betty Baldridge

# RECITATIONS—FIRST SEMESTER

HOURS	MONDAY	TUESDAY	WEDNESDAY	THURSDAY	FRIDAY
8:00					
9:00					
10:00					
11:00	Chapel	Chapel	Chapel	Assembly	Chapel
11:30				Assembly	
1:45					
2:45					
3:45					
4:45					

146

# RECITATIONS—SECOND SEMESTER

HOURS	MONDAY	TUESDAY	WEDNESDAY	THURSDAY	FRIDAY
8:00					
9:00					
10:00					
11:00	Chapel	Chapel	Chapel	Assembly	Chapel
11:30				Assembly	
1:45					
2:45					
3:45					
4:45					

147

# AGRICULTURAL SCHOOL RECITATION SCHEDULE FIRST SEMESTER

148

Hours	Monday	Tuesday	Wedn'sday	Thursday	Hrs. for Friday	Friday
8:00					8:00 - 8:45	
9:00					8:45 - 9:30	
10:00					9:30 - 10:15	
11:00					10:15 - 11:00	
12:00	Luncheon	Luncheon	Luncheon	Luncheon	11:00 - 12:00	Assembly
1:00					12:00	Luncheon
2:00					1:00	
3:00					2:00	
4:00					3:00	
					4:00	

# AGRICULTURAL SCHOOL RECITATION SCHEDULE SECOND SEMESTER

149

Hours	Monday	Tuesday	Wedn'sday	Thursday	Hrs. for Friday	Friday
8:00					8:00 - 8:45	
9:00					8:45 - 9:30	
10:00					9:30 - 10:15	
11:00					10:15 - 11:00	
12:00	Luncheon	Luncheon	Luncheon	Luncheon	11:00 - 12:00	Assembly
1:00					12:00	Luncheon
2:00					1:00	
3:00					2:00	
4:00					3:00	
					4:00	

MEMORANDUM

MEMORANDUM



# MEMORANDUM

