

ALFRED
UNIVERSITY

HANDBOOK

1941 - 42

Presented by the

Alfred Christian Fellowship
of Alfred University

Sophia Perry, Editor

R. Douglas Manning, Pres. of ACF

INDEX

	Page
Administration Rules	
Assembly	22
Athletics	24
Attendance	20
Examinations	19
For Registering—Technical Institute	22
For Registering—College of Ceramics	17
For Registering—Liberal Arts	16
Library Regulations	23
Special Rules	25
Standings	18
Athletic Schedules	64
Class Officers for 1941-42	106
Clubs and Honorary Societies	96
College Calendar for 1941-42	63
Colors of Alfred University	116
Eligibility Regulations	24
Faculty Directory	50
Fraternities	83
Freshman Court	28
Freshman Rules	27
Greetings from the Christian Fellowship	6
Greetings from the President	5
Independent Groups	95
Interfraternity Council	84
Constitution	84
Intersorority Council Constitution ...	91
Introduction to 1941-42 Handbook....	4

INDEX

	Page
Men's Athletics	
Governing Board	66
Intramural Association	72
Track Records	80
Music	108
Office Directory	60
Religious Life	12
Alfred Christian Fellowship	14
Church Services	15
Newman Club	15
Rules for Student Conduct	
At Examinations	26
Cheating	26
Infirmary Regulations.....	26
Songs	110
Sororities	90
Story of Alfred University	8
Student Government	
Student Senate	30
Student Senate Constitution	30
Technical Institute Senate	46
Student Life Committee	46
Constitution	46
Regulations	48
Student Publications	107
University Forum	106
Women's Athletics	74
Women's Student Government	37
Yells	116

INTRODUCTION

The Handbook of Alfred University was first published a number of years ago with the idea of its being merely a "Freshman" Handbook containing rules, information, and statistics that would be of interest only to the freshmen. As time passed, the potentialities of the Handbook were more thoroughly realized, and as a result its store of information has been gradually enlarged until at the present time it occupies the unique position of being an "All University" Handbook, a directory of "Who's-What-in-Which", and the University's unofficial Year Book.

To aid students in becoming familiar with Alfred University, the Handbook Committee suggests:

All new students—be familiar in a general way with the contents of this Handbook—

Know the Alma Mater, school colors and motto, school songs and yells.

Study the Administration Rules.

All new men—know the Freshman Rules and the functioning of the Freshman Court.

Study the sections devoted to the Fraternities and Interfraternity Council.

All new women—know the contents of the section devoted to Sororities and the Intersorority Council.

Of special interest to all students will be the schedule of athletic events for the year and the description of the new series of Forum programs that are to be held this year.

With this introduction, the Alfred Christian Fellowship takes pleasure in presenting to the faculty and student body of Alfred University the 1941-42 edition of the University Handbook.

THE EDITOR

July 14, 1941
Alfred University
Alfred, New York

TO THE CLASS OF 1945

Welcome:

Your high school days are over and you are undertaking the adventure of college. I am glad that you have chosen Alfred as your school. I hope that you are the type of persons which this school can successfully lead in the attainment of real education.

I hope that you will have an enjoyable time here. Most students do. A touch of homesickness occasionally bothers one during these first weeks, but it is a disease never fatal. I trust that the social life, the sports, the dramatics, the journalistic opportunities and other extra-classroom activities will claim their proper share of your time and interest. They are a real part of a well-rounded education.

I hope you will find many congenial spirits, and a very small circle of cronies. These cronies should be a very select group. They will largely determine certain types of your growth in college. Remember that these friendships will in some cases last a lifetime. One of these friends may become your wife (or husband).

I hope you will plan to grow in right directions. You will grow, that is inevitable; that you cannot control. But how and toward what you grow is partly your business. I welcome you to the opportunity to grow into bigger and more worthwhile men and women. We must not only know our business and acquire our needed skills to do something in life, but we must grow to be somebody.

It is a pleasure to welcome to the campus new students enrolling in any one of the four divisions constituting Alfred University in its broadest sense. May you all enjoy and profit by your courses in this fine one-hundred-and-five-year-old institution.

J. NELSON NORWOOD, President

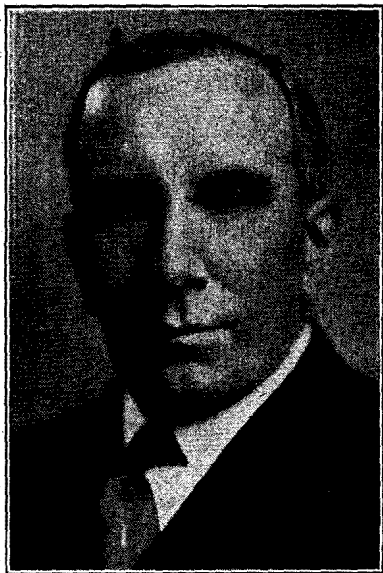
GREETINGS

Class of 1945:

The Alfred Christian Fellowship welcomes you to Alfred. Outstanding among the opportunities we enjoy as students here at Alfred, is the opportunity for religious expression both as individuals and in groups through worship, discussion and service.

The world we live in is making demands that are increasingly difficult to meet and we, as students, have an obligation to our God, to our Fellowmen and to ourselves to develop ourselves into men and women who can face squarely and accept the challenge thrown out by this most demanding world. We are looking for your whole-hearted co-operation in meeting the needs and solving the problems as they present themselves to us here at Alfred. It may seem strange that we should extend an welcome (and expect you to accept it) to an organization with a program that obviously involves work and sacrifice in no small amounts, but we have found joy in fellowship of this nature as well as in our social contacts. This is the *fellowship* to which we welcome you.

The Alfred Christian Fellowship,
R. Douglas Manning, President



J. Nelson Norwood, M.A., Ph.D., President

STORY OF ALFRED UNIVERSITY

To you young men and young women coming upon the campus of Old Alfred for the first time, coming to make yourselves Alfred's and Alfred yours; to you I say the questions will naturally arise: "How and when and why did Alfred University start." "What has it been?" "How has it become what we now see?" To be sure, there is a spirit and ideal here that you can learn about only by contact and experience with it; but glimpses at the story of its past can be given, which will aid you to learn of its spirit.

Just one hundred and five years ago the fifth day of next December, thirty-seven young people got together in an upper room in one of the eight or ten houses that made up Alfred Center, as it was then called, forming the select school, the seed of Alfred University. The teacher was a young man named Bethuel C. Church. He taught one winter, and was succeeded the second winter by a student from Union College, named James R. Irish. The school was already a success and people had said, "Go to, let us build a school building for our new school." This was done by the fall of 1837. The new building had 28 by 38 feet floor space and was ten feet high to the eaves. It was surmounted by a cupola which caused the students to dub it the "Horned Bug," but more dignified people called it "The Cadmus." It cost \$550.

In 1839, when Mr. Irish resigned, another Union student, William C. Kenyon, famous in Alfred history, took charge and gave his whole life to the building up of Alfred University. When the little select school was chartered as an academy in 1843, his title became Principal, and when it asked in 1857 for a college charter, but got a university charter, his title was changed to

President. He died in the presidential harness ten years later.

Although "The Cadmus" was enlarged s'll bigger ideas were incubating. A tract of forest land was bought on the lower slope of Pine Hill (perhaps you are sitting somewhere on it as you read this) and was slowly made to resemble a campus. By 1848, three new buildings appeared on the hillside. Lumber and labor were cheap, much of both was donated, so that the total cost of these structures was \$16,000. There was North Hall, a dormitory, which had a checkered career. It stood about where the Steinheim now stands. In 1868 it was sold to the school district and moved down to the present site of Kanakadea Hall and used as a school house. But its "moving down" propensities had not disappeared, for it was acquired by a private individual and moved still further down the hill and fitted up as a hotel. This private individual was Mr. William C. Burdick, who, in 1896 allowed the University to use the building as a dormitory. Later his heirs gave it to the school. Have you guessed it? Yes, that's it, its present name is—Burdick Hall.

Then, there was old South Hall, a girls' dormitory. It stood where the Social Hall now is, and went up in smoke one cold February morning in 1858. Middle Hall, a boarding place, and a home for some of the teachers, stood on that old cellar site south of the Steinheim. Later it came to be the home of President Allen, and just after being wholly remodeled as a college dormitory, it was burned early in 1912.

Meantime the old Chapel (Alumni Hall, with the quill-pen weather vane), 1852, and the Brick, 1859, so-called to mark its contrast with all the other buildings, which were of wood, appeared. In due time (1863-66) was completed the William A. Rogers Observatory (now taken down) introducing the name of one of the most fa-

mous men in the field of science Alfred has ever possessed.

When President William C. Kenyon ended his labors in 1867, all eyes turned to a member of the faculty, Jonathan Allen, as his logical successor. Professor Allen had been a student in that first select school, and like some of his classmates, had paid his tuition by chopping six cords of four foot wood. He shrank from the task imposed upon him by the trustees, but proved that they and other friends had been right in naming him president, for under his direction Alfred University prospered, and his influence spread far and wide in the land.

In 1879 the unique and beautiful structure called the Steinheim was finished. It represented many things, including the geological formation hereabouts, and in its interior finish, many local woods. The building and its collections were bought by the University.

At President Allen's suggestion, a suitable monument to President Kenyon was erected (1882) in the beautiful Kenyon Memorial Hall. The Gothic was a faculty member's home, and was purchased by the University in 1875.

President Allen managed Alfred's affairs for an even quarter of a century, dying in 1892. The late Professor A. B. Kenyon, as acting-president for a year, and Dean Arthur E. Main as President for two years, bring our story to 1895, when President Davis began his long and successful service as builder of the New Alfred. Then came others of our familiar buildings: Babcock Hall of Physics (1897) (burned in 1929), the Ceramic School (1900), Kanakadea Hall (1908), the School of Agriculture (1909), the Carnegie Library (1912), the central heating plant (1917), Allen Memorial Laboratory (1923), Track and Field House (1929), Susan Howell Social Hall (1930), Bartlett Memorial Dormitory (1931), and the new Ceramic College build-

ing (1931). In November (1932), the Brick was largely destroyed by fire and remodeled in 1933. During 1934 the new Hall of Physics was completed, while the new South Hall was acquired in 1940. These buildings constitute the obvious Alfred of 1941. Again let it be remarked that knowledge of the inner Alfred—the soul of these buildings and campus—is a matter of slow growth in appreciation. Let me drop one hint. It is said that when old South Hall was on fire in 1858, one of the loyal supporters of the school, accompanied by his wife, was riding to town in the old farm wagon. When the pair reached the crest of the hill west of the village and saw the flames and smoke, the wife exclaimed: "South Hall's afire! I see where I wear my old dress another year."

Incidents like this enable us to sense more vividly the meaning of a stanza of Alma Mater which runs:

"She was founded in toil, cemented with blood,
And nurtured through yearnings and tears.
Her treasure, the hearts of brave heroes
who stood
Undaunted throughout trying years.
Each stone was a praper and her battle-
ments there,
Have memories of purposes strong.
Staunch daughters and sons are her monu-
ments fair,
And they lift up the grateful song."

1933 saw another important page written into the history of Alfred University. The long term of President Davis came to a close (1895-1933) and Dr. Paul E. Ttsworth was appointed to take his place. The school mourned the death of this truly great leader, a scant few months later. He made his short presence keenly felt and was loved by all those who were fortunate to know him. Dr. J. Nelson

Norwood was appointed President in his place, and is carrying on the work of his illustrious predecessors.

In 1936, Alfred University celebrated the 100th anniversary of its founding. Highlights of the five-day Centennial celebration were a pageant, a Centennial convocation, and the 100th anniversary commencement. Many distinguished guests attended the celebration, among them Miss Frances Perkins, Secretary of Labor. The Centennial was preserved for future generations of Alfredians, on motion picture film.

MORE THAN FACTS OR SKILL

Machines do not have, nor can they produce, character. Some students who come to college to know many facts, or to develop a few specific skills are nothing more than scholastic machines. When you put a nickel in a juke-box it plays the record—feed these students the right kind of a question and they sing off the right answers. But don't ask them, "Why?"

In the happily adjusted, efficient person facts and skills need to be dominated and directed by a philosophy of life and a philosophy of life needs to be motivated and energized by a faith in the world in which we live. All business, all the professions, all government, indeed, all life gains its deepest meaning and most real success from the intangibles of faith, good-will, confidence, integrity and courage. These intangibles are spiritual factors, the product of religion.

Alfred offers more than a training in facts and skills. Alfred offers a fellowship with strong religious convictions and seeks to develop in each of her sons and daughters a strong, self-reliant, intellectually mature religious experience. This experience will provide a foundation for a

philosophy of life and direct the use of knowledge and skills in the many complex situations in the world today.

Alfred is more than tolerant of the variety of religious experiences found within her student body. Always she has actively encouraged each person to develop his or her own spiritual heritage to the fullest. The program of religious activities is varied and interesting, and is carefully planned to meet the needs of differing students.

The religious program has two main groups of students in mind:

1. Those who have not yet developed any, or only a very elementary religious point of view, or who are troubled about their religious convictions, and

2. Those who have a fairly clear and well-defined religious experience. A third part of the program concerns itself with developing voluntary and professional leadership for religious and character-building agencies in those advanced students who demonstrate their ability in this field.

For the first group there is offered the courses in the curriculum and many discussion groups sponsored by the student religious organizations (see below). Some of these discussions are the larger, "town-hall" type where visiting experts are heard and questioned. Others are of the small group type where intimacy and frankness prevail and no honest question is barred. Many of this group also find new light on their problems in the regular worship services (see below) or in personal conferences with the Chaplain and other faculty members.

For those students in the second group there are regular services of worship and church activities in which they can further develop and express their religious interests. Since most students are growing in their religious insights there is no hard and fast division of the two groups in the

program, but the varying needs of the two groups are kept in mind.

Since 1929 the University has maintained on its staff a Chaplain trained in religious work with students who acts as a counsellor to individuals and as advisor to the various organizations and their programs. The Chaplain has his office in Kenyon Memorial Hall adjoining the Chapel. All students are invited to call upon him at any time.

STUDENT RELIGIOUS ORGANIZATIONS

The Alfred Christian Fellowship is a group of men and women which carries on the work of the former student Y.W.C.A. and Y.M.C.A. There are regular meetings weekly and special project and interest groups from time to time.

This organization welcomes to its membership all "students and faculty who seek to understand Jesus and to express His principles on the campus, in the world and in their personal lives.... It endeavors to stimulate and encourage creative thinking and constructive work in any field that contributes to human welfare and mutual understanding."

Its program is administered through three Commissions:

1. Personal Religious Living, dealing with personality and character development, religious beliefs, prayer and worship.
2. Campus Relations, dealing with educational and cultural topics, student-faculty discussions, recreational and hobby activities.
3. Christian Citizenship at Home and Abroad, dealing with problems in the community (social welfare, economic, governmental) and in international relations.

The Alfred Christian Fellowship works with other campuses, with the Y.W.C.A. and Y.M.C.A. and with the various denominations through the Student Christian

Movement in New York State and always has a large delegation at the S.C.M. Conferences. Through the S.C.M. it is related to the National Intercollegiate Christian Council and the World Student Christian Federation. Last year the Fellowship raised \$235.00 for relief work with students in Europe and Asia.

President---Douglas Manning

1st Vice President---Mary Johnson

2nd Vice President---William Woods

Sec.-Treasurer---Bentrice Nash

The Newman Club is the Catholic organization on the campus and all Catholic students are automatically members. Though this club is mainly a religious organization it also sponsors social affairs as well as general forums with well-known off-campus Catholic speakers. During the year also there are held communion breakfasts, retreats and religious observances according to the season. All Catholic students are invited to become full-fledged members and enjoy the social and religious program and meet their fellow-catholics.

President---Paul Whelan

Vice President---Francis DiLaura

Secretary---Emma Jo Hill

Treasurer---Frank Trigillo

Jewish students have, as yet, no comparable organization, but Kappa Nu, national Jewish social fraternity, usually plays host to the Jewish community in the observance of the religious festivals.

REGULAR WORSHIP SERVICES

University Chapel--- 11 a. m., Monday, Tuesday, Wednesday and Friday in Kenyon Chapel. A 20 minute service, under the direction of the Chaplain, at which there are frequently student, faculty and off-campus speakers. Mr. Wingate is organist and

arranges special musical services from time to time.

University Church—11 a. m., Sundays in the Village Church. A non-sectarian service of Christian worship conducted by the Chaplain, assisted by the vested choir of forty voices. This church is governed by an Executive Committee of Students and faculty.

First Alfred Seventh Day Baptist Church—11 a. m., on the Sabbath in the Village Church. The Rev. E. T. Harris, Pastor.

Roman Catholic Mass—9:15 a. m., Sundays in Kenyon Chapel. Sponsored by the Newman Club.

Christ Chapel (Episcopal)—5 p. m., Sundays in the Gothic Chapel. The Rev. J. G. Spencer of Hornell, Rector.

ADMINISTRATION RULES

REGISTRATION RULES FOR THE COLLEGE OF LIBERAL ARTS

Students will register at the Registrar's office or the Library on registration days. A fee of five dollars (5.00) will be charged for late registration.

Students are expected to register for no more than 17 hours, but if a student has an average standing of B in the preceding semester he may register for 18 or more hours upon the approval of the Dean and Registrar.

Physical Training may be taken in addition to the maximum of 17 hours.

Regulations concerning standings to be maintained by students to entitle them to the privilege of registration without probation the following semester:

Freshman Year, first semester, no definite index. Second semester, 0.20.

Sophomore Year, first semester, 0.40. Second semester, 0.60.

Junior Year, first semester, 0.80. Second semester, 1.00.

Senior Year, first semester, 1.00. Second semester, 1.00.

For graduation it is required that a student have an average scholarship index throughout his course of 1.00.

All indices mentioned above are cumulative and are based on grades for the course thus far.

For complete details see the catalogue of the College of Liberal Arts.

Students desiring to drop a subject for which they have registered, must obtain permission from the instructor, and report to the Registrar's office.

No subject can be dropped after the first week of the semester without penalty. (See grade "W" below.)

REGISTRATION RULES FOR THE COLLEGE OF CERAMICS

The procedure for registration in the Ceramic College is the same as that for the College of Liberal Arts and all the registration rules mentioned above hold equally for Liberal Art and Ceramic students except the regulations concerning standings to be maintained by students to entitle them to the privilege of registration the following semester. In the College of Ceramics they are as follows:

Freshmen are required to have an average scholastic index of 0.50.

Sophomores are required to have an average scholastic index of 0.75.

Juniors are required to have an average scholastic index of 0.85 at the end of the first semester and 1.00 at the end of the second semester.

Seniors are required to have an average scholastic index of 1.00.

A student, whose average cumulative index falls in a range between the average

index mentioned above and an index of 0.50 less than that average index, shall be placed on probation for the following semester. If at the end of the probationary period the average cumulative scholastic index fails to come up to the requirement for his class he shall be dismissed for low scholarship.

A student, whose average index at the end of a semester falls below the range specified for probation, shall be dismissed because of low scholarship.

For further rules see the catalogue of the New York State College of Ceramics.

STANDINGS

The standings of students are reported to them only by letters, and not by percentages.

"A" signifies excellent or superior work; "B" signifies good work or above the average; "C" signifies average or fair work; "D" signifies poor or unsatisfactory work, and is the lowest passing mark; "E" signifies conditioned failure which may be made up by re-examination, or other conditions imposed by the instructor; "F" signifies that work is unfinished; "W" signifies that course has been dropped; "I" signifies failure, which may be made up only by repeating the course in which the grade was received.

A condition or "E" grade shall be given whenever a student has failed to do work of a passing grade, but has done sufficient work to be able to complete the course without repeating the class work. A condition may be removed any time during the following semester. Upon report from the instructor that the condition has been removed, the office will change the grade from "E" to "D".

An *incomplete* (designated by the letter "I") shall be given to the student whose work has been of passing grade but who

has not completed the full amount of work required by the end of the semester. An incomplete may be removed during the following semester, when the student has satisfactorily completed the required work.

The grade "W" will be given to all students who drop a course after the first week of the semester and within two weeks prior to the beginning of final examinations providing the consent of the instructor and the Dean of the College is secured. If a student drops a course within two weeks of examination time, the final grade shall be "I". The "W" shall count as (-1) in determining an index. A student may be excused from these penalties by vote of the faculty for good and sufficient reasons.

When a student has failed to complete one-half of the work required in a course, the final grade will be "F" and not "I".

An incomplete or a condition which is not removed during the next following semester of residence in the college, shall automatically be changed in the office to a failure (F) grade.

EXAMINATIONS

Final examinations are held at the close of each semester. Occasionally, written tests are held during the semester. Fees will be charged for all examinations taken by those not regular members of classes or for examinations or announced hour class tests taken at other times than those appointed. The fee for a special examination to take the place of a final examination is \$5. The fee for any special test to take the place of an announced one-hour class test is \$1.

When the student wishes to take a special examination or class test, he shall bring to the instructor a permit signed by the Dean of Women or Dean of Men. No

special examination shall be given by an instructor unless this permit has first been presented.

ATTENDANCE REGULATIONS

Sec. 1. Regular attendance at class exercises is expected. In the event of absence for any reason the student is expected to make up the work to the satisfaction of the Instructor. If, and when possible this arrangement should be made before the student absents himself from class.

Sec. 2. Excuses for absences will be granted for the following reasons only:

a. Necessary absence incurred by one representing the University on official business such as participation in athletics, dramatics, student conferences and debates, provided arrangement has previously been made with the Dean.

b. Illness, provided the student arranges with the University physician or infirmary superintendent, secures a satisfactory statement from the officials concerned and files same within one week after the absent period.

c. Serious illness at home or other imperative matters necessitating the student's absence, provided such absence is arranged for with the Dean within one week from the date of the absence.

Sec. 3. Absences per semester for each course may be permitted without penalty not to exceed the number of class exercises. Two tardinesses may be reported as an absence. No absence, however, may be taken by any student on the day immediately preceding or following any college recess.

Sec. 4. Seniors and Juniors who have a cumulative index of 1.25 or better and have not been previously disciplined for violation of rules limiting absences shall have the privilege of voluntary attendance at classes on days other than those which im-

mediately precede or follow any college recess. Seniors and Juniors with a cumulative index above 2.00 shall have the privilege of voluntary attendance regardless of previous disciplinary action. If in the opinion of the Dean this privilege is detrimental to the welfare of any student, that student shall forfeit this privilege.

Sec. 5. Penalties:

a. All students absent without excuse on the day next preceding or immediately following any college recess shall have their credit for that semester reduced an hour for each course in which the absence occurs.

b. Whenever any student, except those Seniors and Juniors who have the privilege of voluntary attendance, has reached the limit of absences permitted in any course this fact shall be reported by the Instructor to the Dean who will investigate and in the event of further absences shall use such disciplinary measures as may seem necessary.

c. If a student's physical condition, as indicated by the number of absences caused by chronic illness, is such that he is unable to do satisfactory work he may be required to withdraw from college.

Sec. 6. No excuses for any reason shall be granted for absences from assembly. Three absences from assembly per semester are allowed.

Sec. 7. Absence from any class on the first day of the semester shall be interpreted as late registration for which a fee of five dollars (\$5) is charged. Absences will be counted from the first session of the class at the beginning of the semester.

Sec. 8. These regulations are administered by the Deans whose decision is final.

REGISTRATION RULES FOR THE AGRICULTURAL AND TECHNICAL INSTITUTE

Honor Points

A student for graduation must present a minimum of sixty-six honor points or one for each hour of required work. Not all subjects must be passed with honor point credit, but for each hour failed or passed at minimum grade, an equivalent number of hours must be passed with honors to offset the points lost. Assembly attendance (once weekly on Friday at eleven), is compulsory, and one honor point is deducted for each unexcused absence.

Equivalent letter grades and honor points are awarded to the following scale:

Quality	Honor points for each credit hour	Equivalent letter grades for transfer credit
Excellent	3	A
High	2	B
Average	1	C
Minimum	0	D
Incomplete	-1	E
Unsatisfactory	-2	F

The following minimum honor point requirements must be met for registration the following semester:

1st year, second semester	12. probation	9
2d year, first semester	27. probation	24
second semester	45. probation	42
graduation	66	

For complete details see the catalogue of the School of Agriculture.

ASSEMBLY

On each Thursday morning at 11:00 o'clock there is an assembly for the Colleges of Liberal Arts and Ceramics, and on Thursday at 9:00 for the School of Agricul-

ture at which an address or entertainment is given. Attendance credit will be allowed provided absences do not exceed three for the semester. *No excuses for assembly are granted.* Four semesters of attendance credit in assembly are required for graduation.

LIBRARY REGULATIONS

1. Library Hours—The Library is open for regular work from 8:30 A.M. until 12:00 o'clock noon, and from 1:30 to 5:30 P.M. on week days. It is also open from 3:00 to 5:00 P.M. on Saturday and Sunday and from 7:00 to 9:30 every evening except Friday, Saturday and Sunday when it is open from 7:00 to 9:00 P.M. The Agricultural School reference library where all books are classed as "Reserve Books" is open daily from 8 to 5 o'clock except Saturday and Sunday.

2. Loan of Books:

(1) Books may be retained two weeks with the privilege of renewal. (Current fiction may be retained for one week without the privilege of renewal).

(2) A fine of two cents a day, holidays included, will be imposed for all books overdue.

(3) Students whose fines are in arrears must settle the same before receiving their final standings at the end of each semester.

(4) Books are transferable on cards at the desk. Borrowers are not expected to pass books from one to another without making the transfer at the desk.

3. Reserve Books:

(1) Reserve books used in the library must be returned to the desk before leaving the room.

(2) Reserve books may be drawn from the library at 9 o'clock at night and must

be returned not later than 10 o'clock the following morning. Failure to comply with this regulation on the part of any student will subject him to a fine of 25 cents. Continued failure to comply with the above regulation will result in loss of all library privileges.

(3) Reserve books drawn Friday must be returned Saturday afternoon at 3 o'clock, and those drawn Saturday night must be returned Sunday afternoon at 3 o'clock.

ATHLETICS

All students, except those in the various technical courses of the School of Agriculture, unless excused by the University Physician are required to do one semester hour in physical training each semester during the freshman and sophomore years, under the supervision of the Director. The required work of the freshman year shall include lectures and gymnasium practice. Sophomores shall elect either advanced gymnasium practice or athletic sports supervised by the Department of Physical Education.

ELIGIBILITY REGULATIONS

The University Faculty has passed the following eligibility regulations on recommendation of the faculty committee on athletics. (See also Section 7. Eligibility, of Constitution of The Athletic Governing Board for student eligibility regulations.)

1. Any student in the College of Liberal Arts or in the College of Ceramics who is on scholastic probation by action of the Scholastic Standards Committee, shall not be eligible to participate in intercollegiate athletics, all-college dramatic productions, the men's or women's Glee Clubs; or act as president of the Student Senate, as edi-

tor, associate editor or assistant editor or business manager of the Fiat Lux or Kana-kadea; or act as any officer of the Student Branch of the American Ceramic Society or of the Ceramic Guild.

2. Any student in the New York State Agricultural and Technical Institute who is on scholastic probation shall not be eligible to participate in inter-collegiate athletics.

3. An Eligibility Committee, composed of the Dean of the New York State College of Ceramics, the Dean of the College of Liberal Arts, the Director of the New York State Agricultural and Technical Institute, and the Registrar of the University, shall have final jurisdiction over doubtful cases.

SPECIAL RULES

1. Any painting on the University buildings or any other University property is strictly forbidden. The classes as a whole will be penalized for any violation of the rule by any of its members.

2. All smoking in classrooms or in laboratory buildings is prohibited.

3. Smoking on the part of any college woman while under college jurisdiction is strictly forbidden, except in the rooms provided expressly for that purpose by the University.

4. The use of intoxicants by any student is forbidden. As a condition precedent to the students being accepted and remaining in the University, it is understood that the use, possession, or transportation of intoxicating liquors is forbidden. Violation of this rule of the University is sufficient cause to terminate a student's connection with the University.

RULES FOR STUDENT CONDUCT

AT EXAMINATIONS

1. All books, wraps, etc., not needed for the examination must be placed in the front of the room.
2. Any communication between students must go through a professor or proctor in charge.
3. The appearance of cheating must be avoided. Circumstantial evidence can lead to dismissal.
4. Heavy sweaters are not permitted at examinations of an hour or longer.
5. No blue books are to be taken from the examination room. (The proctor may permit question papers to be taken out.)

CHEATING

Cheating in laboratories, tests and examinations will not be tolerated. The burden of proof will be on the student, who must avoid even the appearance of cheating. Individual instructors will handle cases of cheating as they see fit. Every effort will be made to see that every dishonest student is so labeled in letters of recommendation.

INFIRMARY REGULATIONS

1. Office hours at the Infirmary every morning at 9 o'clock except Saturday and Sunday. Students wishing to see Dr. Hitchcock must be at the Infirmary promptly at nine.
2. Students must have a written order from the Infirmary to see Dr. Hitchcock in his private office.
3. Only in an emergency is a student justified in calling Dr. Hitchcock directly.
4. Students calling at the Doctor's office without a written order will be charged the regular price, except in an

emergency, that to be determined by the Doctor.

5. Students living in private homes must notify the Infirmary when ill and before calling the Doctor, except in an emergency.

6. Students in their own houses must notify the Infirmary and the nurse will visit them before an excuse can be given.

7. All excuses for illness will be issued at the Infirmary and must be filed at the Registrar's office not later than one week after the end of the absence period.

8. Students' visiting hours at the Infirmary are from 3 to 4 in the afternoon, and 7 to 8 in the evening.

9. After being admitted to the Infirmary students are not allowed visitors for the first 24 hours, without special permission.

10. Permission to visit the opposite sex must be obtained from the Dean of Women.

FRESHMAN RULES

The Freshman Rules shall be incorporated into the By-Laws of the Constitution of the Students Association of Alfred University.

1. All freshman men shall be required to wear the regulation green cap with yellow button, and all freshman women shall wear the green beret, from Freshman Week in September until a five weeks' period is up. The cap shall be worn without alteration in any way, from six a. m. to six p. m., Monday through Friday, and at all home athletic contests. Freshman court shall be held for 5 weeks, beginning with Freshman Week and carrying through Thanksgiving unless Freshmen shall be victorious in a contest held in October when they shall also remove their caps.

2. All freshmen shall be forbidden to use tobacco in any form on the campus,

i. e., east of Main Street, between Terrace and Pine streets, except in private dwellings and Burdick Hall.

3. Freshmen shall be strictly required to observe all the rules of common courtesy, and shall show due respect to University Faculty and Upperclassmen by touching caps, giving preference in entering and leaving buildings, etc.

4. Freshmen shall greet all faculty members, students, and campus guests with the customary "hello" or a similar greeting.

5. All freshmen shall keep off the grass on the campus as defined above.

6. The regulation frosh buttons shall be worn conspicuously from the time of registration until four weeks after classes begin.

7. Freshmen are prohibited from wearing monograms of any athletic association except that of Alfred.

8. Freshmen shall learn the Alma Mater and all Freshman Rules, and shall be required to pass an examination on the same on or about October 15, at the discretion of the Senate.

9. Men of the Freshman Class who violate such Rules as set forth above shall be tried and sentenced by the Freshman Court, whose members shall execute, or cause to be executed all decisions rendered by that body. Women of the Freshman Class who violate these rules shall be tried and sentenced by the Women's Student Government.

FRESHMAN COURT

ARTICLE 1. Name. The name of the organization shall be the Freshman Court.

ARTICLE 2. Purpose. Sec. 1. The purpose of this court shall be to uphold Alfred traditions and campus rules.

Sec. 2. To bring male offenders, freshmen, against such traditions and rules, up for trial.

Sec. 3. To prosecute offenders by suitable and just punishment for infringement of said traditions and rules.

ARTICLE 3. Organizations and Administration. Sec. 1. The Blue Key, service honor society, shall appoint a chief judge and six jurors of Freshman Court from the Senior Class. At least one shall be a member of the Senate and at least three shall be members of the Blue Key.

Sec. 2. The Freshman Court shall meet weekly, and shall summon violators of freshman rules before its meetings. Penalties, including wearing of sign, public apologies in assembly, etc., may be imposed.

Sec. 3. Paddling shall be eliminated from the penalties for violations of freshman rules and no monetary fines may be imposed.

Sec. 4. For flagrant and persistent violation of freshman rules, the violator may be summoned before a meeting of the Dean of Men, chief judge of Freshman Court, president of Blue Key, and president of the Senior Class. Suitable penalties may be imposed, including the denial of permission to leave town, and the denial of dance, movie, and Collegiate privileges.

Sec. 5. The constitution of Freshman Court may be amended by a two-thirds vote of the Blue Key with the ratification of the Senate.

Sec. 6. Any member of the Court may be removed from office for attitude, indifference or violation of the spirit of the Court, by a two-thirds vote of the Blue Key.

STUDENT GOVERNMENTS OF ALFRED UNIVERSITY

SENATE

1941-1942 Officers

President—Ralph Rhodes
Vice-president—Clifford Reader
Secretary—Barbara Hill
Treasurer—Douglas Beals
Student Life Representative—Robert Todd

The Alfred University Student Senate, composed of eleven seniors representing the fraternities, sororities and outside men and women, is the governing body of student activities. Among the duties of the Senate are the running of annual campus elections, allocation of the campus budget, and promotion of student-faculty relations.

All students are invited to the Senate meetings which are open and are urged to bring with them any suggestions, complaints, or ideas for consideration.

CONSTITUTION OF STUDENT'S ASSOCIATION OF ALFRED UNIVERSITY

ARTICLE I—NAME

Section 1. The name of this organization shall be the Student's Association of Alfred University.

ARTICLE II—PURPOSE

Section 2. Realizing that the Faculty has supreme authority over all matters connected with student life, and yet knowing that they are willing to cooperate with the students to promote the welfare of the school, the students have organized them-

selves into the Student's Association of Alfred University in order to develop a wise and intelligent self-control, to preserve and regulate beneficial customs and traditions of Alfred, to have charge of and control all college elections, and to assume, whenever expedient, the control of student affairs, all subject to the further provisions of this constitution.

ARTICLE III—MEMBERSHIP

Section 1. All persons enrolling as students of Alfred University shall be considered as members of this association.

Section 2. No tax may be levied for the support of this except as may be voted by the Association for any purpose that the Association may deem necessary.

ARTICLE IV—ORGANIZATION

Section 1. The Student's Association shall be headed and represented by a Senate consisting of one senior from each of the following organizations, namely: Delta Sigma Phi, Lambda Chi Alpha, Klan Alpine, Kappa Psi Upsilon, Kappa Nu, Pi Alpha Pi, Theta Theta Chi, Sigma Chi. The non-fraternity group shall have three representatives (Amendment 1, 1938).

Section 2. The Senate shall have a President, Vice-President, Secretary-Treasurer and such other officers as it may deem necessary. The President, Vice-President and Secretary-Treasurer shall also act as officers of the Student's Association.

ARTICLE V—ELECTIONS

Section 1. On or before the second Monday in April, each organization shall appoint a Junior to represent that organization on the Student Senate.

Section 2. The President of the Senate may call these representatives to attend any meeting in order to observe the procedure of the Senate.

Section 3. Each Senate member shall be required to take the following oath of office when he takes over the duties as a Senator:

"I, upon my honor as a student of Alfred University, solemnly swear that I will carry out the duties of this organization to the best of my ability, in an unbiased, trustworthy and gentlemanly fashion."

The president has the right to call upon any or all members of the Senate to give the above oath at any meeting as he sees fit.

Section 4. It was voted that the constitution be amended to the effect that the election of the Senate president be by a student body vote and of the eleven representatives, two receiving the highest number of votes be the candidates for the final voting.

(Amendment 3, April 3, 1940)

Section 5. It was voted that the Senate conduct a special assembly wherein from the eleven candidates for the president of the Student Senate, those interested in the presidency should present their platform for the coming year.

(Amendment 4, April 17, 1940)

ARTICLE VI—ELIGIBILITY

Section 1. Members of the Student Senate shall be Seniors.

Section 2. No member of the Senate shall lose his seat on account of a change in his college ranking.

Section 3. Two consecutive, unexcused absences from meetings by any member shall terminate his membership; however, an excuse for an absence must be presented to the Senate for acceptance or rejection.

Section 4. Any member is liable to impeachment and removal for misconduct in office by a three-fourths vote of the Senate.

Section 5. Any organization may permanently change its representative with the consent of the Senate, if said change is deemed necessary.

ARTICLE VII—MEETINGS

Section 1. The Senate shall hold regular meetings at least once a month on a date set at the beginning of each school year by the Senate.

Section 2. Special meetings may be called by the president at any time.

Section 3. Three-fourths of the members shall constitute a quorum at these meetings.

ARTICLE VIII—POWERS

Section 1. The President shall preside at all meetings of the Senate, of the Association, and of the student body.

Section 2. The President of the Senate shall have the power to vote.

Section 3. The Secretary-Treasurer shall keep the minutes of all meetings of the Senate and of the Association; he shall attend to the correspondence of the Association and perform such other duties as are usually performed by the Secretary-Treasurer of such an organization. He shall also have charge of such funds as are voted by the Association.

Section 4. The Senate shall have final authority over all college customs and tradition; it shall regulate and supervise student activities as stated in the constitution and regulation of student activities; it shall represent the Association in all its relations with the Faculty, Alumni, Trustees and other exterior bodies; it shall be authorized to use discretionary power in all matters requiring immediate action.

Section 5. The Senate shall govern the following campus elections:

1. Officers of the Senior, Junior and Sophomore classes.

2. Freshman Court.
3. Student Life Committee.
4. Flat Lux.

in the following manner:

(a) The names of candidates for campus officers must be presented two weeks before the first Thursday in May. (Amendment 3, 1938).

(b) All represented groups are to nominate one representative. (Amendment 4, 1938).

(c) Candidates may also be presented to the Senate outside of the nominations submitted by each organization if accompanied by a petition signed by 75 students. (Amendment 5, 1938).

(d) Members of each class shall nominate their candidates for the following year, in meetings of the fraternity, sorority and outsider groups. (Amendment 6, 1938).

(e) Pledges are to vote on all nominations. (Amendment 7, 1938).

(f) All nominations should be made public within one week after the Senate receives them. (Amendment 8, 1938).

(g) Repealed in May, 1939.

(h) An index of 0.5 for the semester prior to election and an average index of 0.8 will be required of all nominees.

(i) Election day shall be the first Thursday in May. (Amendment 9, 1938).

(j) At least one member of the Student Senate shall be present at the meetings for the election of officers to present the names of the nominees. All meetings for the election of class officers will be held on the same day at the same hour, as designated by the Student Senate.

(k) The final elections of officers shall be voted upon by closed ballot by the respective groups. A majority vote of those present shall be necessary for election. (Amendment 10, 1938). In the event a majority vote is not obtained on the first ballot, the two highest shall be voted for

again until a majority is obtained. (Amendment 11, 1938).

Section 6. Freshman elections shall be conducted in the presence of the Freshman class by the Student Senate before Nov. 1. It shall be the duty of the Senate to see that some form of class competition is carried on between the Freshman and Sophomore classes sometime before Nov. 10.

Section 7. The Student Senate shall have power to take cognizance of the violation of the campus rules and shall be a court of last resort in the interpretation of these rules.

Section 8. It shall be the duty of the Senate to condemn any practice which may be deemed not in accordance with the true college spirit; to summon to its meetings individuals indulging in such practice or violating Campus Rules, and in case of proven misconduct to inflict such penalties as it shall deem expedient.

Section 9. In all cases, its power may extend censure of individual or groups of individuals for misconduct.

Section 10. The Student Senate, either on its own initiative, or upon the suggestion of college officers, shall assume a vigorous control of situations arising in the field of student activities and student government.

Section 11. Violation of all rules, excepting those set forth in Article II under Campus Rules, shall be referred to the Student Senate for settlement. The Senate and Freshman Court may or may not publish the names of the convicted offenders in the Flat Lux.

ARTICLE IX

Section 1. The Student Senate shall pay the Christian Association one dollar per page for publishing in their annual handbook the revised Constitution and By-Laws of the Students' Association.

Section 2. Only letter men in football, basketball, cross-country, track and wrestling may wear the regulation V-neck sweaters.

Section 3. Dances for the benefit of the Athletic Association shall be managed by a person appointed by the athletic council.

ARTICLE X

Any student transacting any financial business for any student activity or in any activity involving students of Alfred University, shall be responsible to a Faculty member chosen annually by the Senate from a number suggested by the Faculty. Such a responsibility will be interpreted to mean a strict accounting of methods and finance at whatever time the auditor chooses. Should any officer fail to do so, the auditor shall suggest an action to the body that placed him in that office.

ARTICLE XI—AMENDMENTS

Section 1. This Constitution and By-Laws may be amended at any regular meeting of the Senate by a three-fourths vote of the entire Senate, providing such amendments have been read at a meeting at least one week previous.

Section 2. The Athletic Association Constitution and the Women's Student Government Constitution may be amended as stated in the different articles under their respective Constitutions.

Section 3. There shall be no Frosh-Soph contest on the campus other than those conducted under the jurisdiction of the Student Senate.

WOMEN'S STUDENT GOVERNMENT

1941-42 Officers

President—Mildred Pivetz
Secretary—Esther Miller
Treasurer—Alice Lundy

Ten members, representing the sororities, the dormitory, the outside group, the N.Y. A. girls, Greene Hall annually make up the Council of the Women's Student Government, which has power to deal with the conduct of its members in their college life, insofar as these are not regulated by the Student Senate, and come within a list of regulations approved by a two-thirds vote granted by the Student Life Committee. This body has the power to inflict the penalties to enforce its decisions. The other members of this year's Council are:

Ailsa Johnstone, Theta Theta Chi
Mary Johnston, Pi Alpha Pi
Eugenie Reb, Sigma Chi Nu
Alice Lundy, Greene Hall
Kay Contrera, Girls' NYA
Marie McDermott, Outside Girls
Esther Miller, Mary Ellen Mills, Emma Jo Hill, The Brick.

Another representative will be elected from The Brick to make up the council.

CONSTITUTION

ARTICLE I.—NAME

This organization shall be called the Women's Student Government of Alfred University.

ARTICLE II.—MEMBERSHIP AND VOTING

Section 1. The membership of the Women's Student Government shall consist of all the women students in the College of

Liberal Arts of Alfred University, of the College of Ceramics of Alfred University, and the School of Agriculture of Alfred University. Membership is not compulsory with those whose parents are residents of Alfred. All members shall have equal power of voting.

ARTICLE III.—PURPOSE-POWER

Section 1. The Women's Student Government shall have power to deal with all questions concerning the conduct of its members in their College life, insofar as these are not regulated by the Student Senate, and come within a list of regulations approved by a two-thirds vote of the Women's Student Government, and granted by the Student Life Committee. It shall have power to inflict the penalties to enforce its decisions.

ARTICLE IV.—COUNCIL

Section 1. The executive and judicial power of the Women's Student Government shall be vested in a council, composed of the president of the organization, the president of the Brick and eight other members, one of whom shall be chosen as an upper-class representative of Theta Theta Chi, Pi Alpha Pi and Sigma Chi Nu, three of whom shall be chosen as representatives of the Brick, one of whom shall be chosen from the town girls, and one from the School of Agriculture.

Section 2. All business transacted in council meetings shall be kept secret unless otherwise ordered by a two-thirds vote of the council.

ARTICLE V.—ELECTIONS

Section 1. Election of the council shall take place by April 15.

Section 2. In case there is vacancy in the council at any time, this vacancy may be filled by vote of the council.

Section 3. The representative from the Freshman class shall be elected by the class every two months. No Freshman shall be eligible for representative for more than two months in the year.

ARTICLE VI.—DUTIES OF OFFICERS

Section 1. The president shall be the executive officer of the organization, and shall call together and preside over all meetings of the organization and council.

Section 2. The duties of the vice-president shall be to assume the duties of the president in the absence, or at the request of the president.

Section 3. The duties of the secretary shall be to keep the minutes of all meetings of the organization.

Section 4. The duties of the treasurer shall be to act as custodian of all funds of the organization, paying bills only by vote of the council.

ARTICLE VII.—ELIGIBILITY

Section 1. The President of the Women's Student Government shall be a senior, and she shall have preferably served on the council either as a representative or as a member prior to her Senior year.

Section 2. Three unexcused absences from Council meetings by a member shall disqualify her from office.

Section 3. Any member is liable to impeachment for misconduct in office by a two-thirds vote of the Council and may be removed from office by a two-thirds vote of the entire Women's Student Government.

ARTICLE VIII.

A quorum of the Women's Student Government shall consist of at least two-thirds of its members.

ARTICLE IX.

Six members of the council shall constitute a quorum, and no action shall be taken by the council upon the agreement of five voting members.

ARTICLE X.—MEETINGS

Section 1. The president of the organization with the advice of the council, shall call a meeting whenever sufficient business demands it. Attendance at these meetings shall be compulsory.

Section 2. The council shall meet regularly every week for discussion of matters and for the transaction of such business as is necessary.

Section 3. The council shall appear at all Student Government meetings attired in the regulation cap and gown. The Juniors and Sophomores will wear only the gown.

ARTICLE XI.—PUBLICITY

Section 1. Each member of the organization shall be supplied with a copy of the Constitution and Regulations of the Women's Student Government at the beginning of each College year. The Constitution and the Regulations shall be read by the president to the freshman class at its first meeting.

ARTICLE XII.

Section 1. After a careful and thorough explanation of the rules by the president of the organization, the Freshmen shall be required to pass an examination on the rules and regulations pertaining to W. S. G., attaining at least a B Grade on such an examination. This shall be conducted by the council not later than Nov. 1. In case anyone fails to pass this examination, due punishment will be inflicted until the grade is attained.

Section 2. Provision shall be made to send the president and a junior representative to the annual Inter-Collegiate Student Government Convention. In case the President cannot go, another delegate shall be elected by the organization from either the Junior or Senior class.

ARTICLE XIII.—AMENDMENTS

Section 1. This Constitution may be amended by a two-thirds vote of the organization.

REGULATIONS

ARTICLE I.—PREAMBLE

Section 1. The Women's Student Government heartily believes that normal comradeship between young men and young women, in mutual respect and reverence, in fine self-direction and self-control are essential to the co-operation of social life and activities with the claims of health and scholarship.

Section 2. The following regulations are an attempt to adapt the members of this organization to the special conditions of the college community. This organization expects its members to be guided by the underlying principles of wholesome social relationships in all situations whether covered by these definite statements or not. Disregard of these principles or violations of the regulations will be considered sufficient grounds for imposing penalties.

ARTICLE II.—CLOSING HOURS

Section 1. Closing hours are indicated on the opposite page. Following are the exceptions:

a. Senior women on the approved list may have one o'clock permission on Friday or Saturday nights with the consent of the house mother. Approved list consists of Senior women recommended by the Dean of

Women and the W.S.G.

b. Junior women on the approved list may have 12 o'clock permission once a month with the permission of the President of the W.S.G. and the house mother. Approved list consists of Junior women recommended by the Dean of Women and the W.S.G.

c. Senior and Juniors may have second show permission on Friday and Saturday nights and 10:30 show permission on Thursday nights.

d. Sophomores and Freshmen may have with permission one second show a month or one 10:30 show permission on Thursday nights.

e. 11 P. M. shall be the closing hour during vacation except by special arrangement with the house hostess.

f. 11 P. M. shall be the closing hour after all examinations have ended.

FRESHMAN REGULATIONS

1. Freshman women shall not ride in cars with escorts after 6 P. M.

2. Freshman women shall not date during the first semester, except for the show Thursday evening and Friday and Saturday evenings.

(a) If, at the beginning of the second semester, a Freshman woman attains at least a one point index (a "C" average), she may date on Sunday nights as well.

(b) Those not attaining a one point index will observe the same dating regulations as during the first semester. Low indices will be referred to the Dean of Women.

3. A date shall be defined as any casual or pre-arranged meeting with a man after 6 P. M.

SPECIAL REGULATIONS

1. Young women may not call for or meet young men at the houses where men live.

CLOSING HOURS

	Mon.	Tues.	Wed.	Thurs.	Fri.	Sat.	Sun.
Seniors	10:00	10:00	10:00	10:00	11:00	11:00	11:00
Juniors	9:45	9:45	9:45	9:45	11:00	11:00	10:30
Sophomores	9:30	9:30	9:30	9:30	11:00	11:00	10:00
Freshmen	9:30	9:30	9:30	9:30	10:00	11:00	10:00
2d semester							
Freshmen	9:30	9:30	9:30	9:30	10:00	10:30	10:00
1st semester							

2. When a woman is invited to visit at the home of a man, she must show to the Dean of Women permission from home and an invitation from the man's mother or other member of the family.

3. When a woman is invited to visit other than a campus woman or other than a near relative, it is necessary to show the Dean of Women permission from home.

4. Any member upon leaving town shall leave with the person in authority at her place of residence, information as to where she is going and her address while out-of-town.

5. Any overnight absence must be arranged with the Head of the House. Students may spend the night in residence houses other than their own only on Friday or Saturday night, unless by special permission. No woman must be absent from her own house after a college party of any kind. Special permission to go to her own home after any such occasion must be obtained from the Dean of Women. If the permission is granted, the student must return to her own house and report in person before leaving.

6. Women returning to college from home or a visit must be at house of residence before closing time unless special permission has been given.

"THE TEN COMMANDMENTS"

1. All permissions in accordance with the Student Government Regulations shall be granted by the President of the Council any time before 7:00 P. M. If you are unable to reach the President, permission may be granted by a Council Member appointed by the President.

2. No more than six 11 o'clock permissions shall be granted unless the applicant has an index of 2.0.

(a) Late permission to work in the Ceramic School shall be granted by the Presi-

dent of the W.S.G. as she deems wise. The permission is not later than 10 o'clock unless with the approval of the department head.

(b) Freshman women cannot have Ceramic School permission.

3. Restaurant privilege is allowed after college calendar events until 11:00 p. m. No restaurant privilege is allowed after this hour.

4. Women not attending college dances on the college calendar may with permission observe 11:30 p. m. closing hours, and be permitted to go to Hornell or elsewhere without such action being counted as a late permission, although, of course, with proper chaperonage.

5. A "campus" means that a woman may not leave her house of residence after 8 P. M.

(a) A "social campus" means that a woman may not go to social recreation places including the Collegiate and "Dog Cart" and may say merely "hello" to men. Any social meeting with men will be considered as violating "social campus".

6. Smoking shall be allowed only in such rooms as provided for by the University.

7. Beginning with Moving-Up Day all classes shall observe the rules of the classes above them.

8. Entertaining at the houses may be done only on week-end afternoons and evenings unless by special permission of the house mother.

9. There may be no dating in on a date night after 11:00 o'clock.

10. Each member, except Council members, is assessed \$1.00 per year.

11. The W.S.G. shall have the power to recommend any woman to the Dean of Women for suspension.

All Women's Student Government regulations are in effect as long as Women are on the campus.

STUDENT SENATE OF THE AGRICULTURAL SCHOOL

The Agricultural School Senate is a manifestation of the democratic propensities of both the faculty and the students. It is a representative body of the various groups in the school, consisting of eight members: the senior and freshman class Presidents are automatically on the board, there are two seniors and two freshmen two-year course men, and one senior and one freshman three-year course men.

Literally the Senate is the governing unit of the student body and it intercedes between student demands and the faculty. The board has at its discretion the dispensation of all money to be allotted to the various organizations, controls all extra-curricular activities, and decides the policies of the school.

Because of its position, all Agricultural School organizations and class officers are responsible for their actions to the Senate.

STUDENT LIFE COMMITTEE

President—Robert Todd
Secretary—Judith Clausen
Miss Marion Fosdick
Chaplain William H. Genné
Dr. S. R. Scholes
Prof. H. O. Burdick
Prof. Don Schreckengost
George Kellogg
Margaret Aylor
S. Grant Merriman
Elizabeth Stargl

CONSTITUTION OF THE STUDENT LIFE COMMITTEE

ARTICLE I—NAME

The name of this organization shall be the Student Life Committee.

ARTICLE II—MEMBERSHIP

Sec. 1. The Committee shall be composed of five faculty members and seven students.

Sec. 2. Three of the faculty members are to be elected by the faculty, and two by the student body.

Sec. 3. One student representative is to be elected by the student body, one by the faculty, and one from and by the Student Senate.

Sec. 4. The presidents of the four classes are ex-officio members; if a class president is otherwise elected to the Committee, the vice-president shall represent the class.

ARTICLE III—PURPOSE

This Committee shall be a regular medium of communication and mediation between students and faculty.

ARTICLE IV—ORGANIZATION

Sec. 1. The officers shall be a president and a secretary-treasurer.

Sec. 2. The president shall call and preside at all meetings, and assist the Dean of Women in drawing up the Social Calendar.

Sec. 3. The secretary-treasurer shall keep the minutes of meetings, carry on all necessary correspondence, and handle the funds.

Sec. 4. Meetings of the Committee shall be held on the first Thursday of each month, or more frequently, at the call of the president.

ARTICLE V.—ELECTIONS

Elections of members by the student body shall take place under the jurisdiction of the Student Senate.

ARTICLE VI--POWERS AND DUTIES

Sec. 1. It shall be the duty of the Committee at all times to advise the Student Senate and make suggestions to it and to the faculty concerning student conduct and self-government. The Student Senate is invited to confer with this Committee on any or all matters of student interest.

Sec. 2. The Committee has advisory supervision over all student social functions and social activities of student life in general. It grants all dates for the campus social calendar. Students desiring to promote any entertainment, party, dance, or other social affair must make application to the Committee. All permissions granted are subject to the approval of the Dean of Women, as to arrangements and chaperonage. Student social affairs will be conducted under the Student Life Regulations which are appended to this Constitution.

Sec. 3. The Committee has the power to act in the capacity of attorney for a student in a critical case, where such action seems justifiable and necessary.

ARTICLE VI--AMENDMENTS

Amendments to this Constitution must be approved by a three-fourths vote of the entire Committee.

STUDENT LIFE REGULATIONS

No student social function may be held within one week prior to examinations, during an examination period, or during Commencement.

Each fraternity (sorority) or non-fraternity organization may have a maximum of four calendar parties per year. Small parties, not on the social calendar, may be held, subject to the regulations governing the large social functions. These parties end at 11:00 P. M.

Arrangements for all social affairs must be made with the Dean of Women by Monday of the week in which the party is to be held. Information must be given as to chaperones, date, place, and type of party. For small parties, the arrangements may be made later in the week, but at least 24 hours before the party is to be held.

The chaperones for all parties must be chosen from the faculty, except by special arrangement with the Dean of Women.

When women are entertained at dinner or otherwise at fraternity houses or other houses where men live, a woman member of the faculty or the wife of a member of the faculty must be invited.

For each party, a student committee of the organization concerned must be responsible for carrying out the social regulations of the College.

No out-of-town dances are to be attended during the week except by special permission of the Dean of Women. During the week-end, out-of-town dances may be attended only after satisfactory arrangements have been made with the Dean of Women. This rule applies also when students are visiting.

All social regulations apply to recess and inter-semester affairs as well as to those held during the college term.

UNIVERSITY FACULTY DIRECTORY

* Indicates that this professor is the chairman of his respective department.

(Note—If no division of the University is noted in connection with a faculty member, he is on the staff of the College of Liberal Arts.)

Raymond L. Alty, B.S., M.S. (1937)
Instructor in Physics
(Office—Hall of Physics)

Charles R. Amberg, B.S., M.S. (1929)
Professor of Ceramic Engineering
(Office—New Ceramic Building)

*Bror H. Anderson, B.S. (1939)
Floriculture and Horticulture
(Office—Technical Institute)

Frank C. Arrance, B.S. (1940)
Research Assistant Ceramic Experiment
Station
(Office—Binns Hall)

*Ellsworth Barnard, Ph.D. (1941)
Associate Professor of English
(Office—Alumni Hall)

Ahva John Clarence Bond, A.M., B.D., D.D.
(1935)
Dean School of Theology
English Bible, Philosophy of Religion,
and Practical Theology
(Office—Gothic)

Harold O. Boraas, A.B., A.M., Ph.D. (1928)
Associate Professor of Education
(Office—Hall of Physics)

*Robert J. Brooks, B.S. (1937)
Air Conditioning
(Office—Technical Institute)

Robert H. Brown, B.S. (1940)
Instructor in Mathematics and Drafting
(Office—Technical Institute)

Wayne E. Brownell, B.S. (1940)
Research Assistant Ceramic Experiment
Station
(Office—Binns Hall)

*Charles D. Buchanan, A.B., A.M., Ph.D.
(1930)
Professor of German
(Office—Alumni Hall)

*Harold O. Burdick, A.B., A.M., Sc.D. (1931)
Professor of Biology, Curator of Museum
(Office—Allen Laboratory)

Wendell M. Burditt, B.S., A.M. (1929)
Associate Professor of English and
Journalism
(Office—Alumni Hall)

Forrest Burnham (1939)
Instructor in Ceramic Art

Robert M. Campbell, B.S. (1933)
Professor of Ceramic Engineering
(Office—Binns Hall)

†Marie Louise Cheval, A.B., A.M. (1931)
Assistant Professor of Romance Languages
(Office—Kenyon Memorial Hall)

*George F. Craig, B.S. (1937)
Radio
(Office—Technical Institute)

†On leave of absence 1941-42

Mary Craig, B.S. (1939)
Mathematics
(Office—Technical Institute)

Lavinia E. Creighton, B.S. (1936)
Director of Physical Education for
Women
Assistant Professor of Physical Education
(Office—South Hall)

A. Burdet Crofoot, B.S. (1936)
Instructor in English
(Office—Green Block)

Phyllis M. Czajkowski, B.S. (1940)
Instructor of Secretarial Studies
(Office—Technical Institute)

Boothe C. Davis, A.M., Ph.D., D.D. (1895-
1933)
President Emeritus

*Dora K. Degen, Ph.B., A.M. (1925)
Dean of Women
Professor of English Bible and Religious
Education
(Office—Green Block)

*M. Ellis Drake, A.M., Ph.D. (1926)
Dean of Men
Director of Summer School
Charles Potter Professor of History and
Political Science
(Office—Kanakadea Hall)

Tobias H. Dunkelberger, Ph.D. (1941)
Assistant Professor of Chemistry
(Office—Binns Hall)

*Kenneth B. Floyd, B.S.A., M.S. (1935)
Agricultural Business
(Office—Technical Institute)

† *Eva L. Ford, A.B., A.M. (1926)
Professor of Romance Languages
(Office—Kenyon Memorial Hall)

Marion L. Fosdick (1915)
Professor of Ceramic Art
(Office—Binns Hall)

E. E. Foster, B.S. (1941)
Instructor in Agronomy
(Office—Technical Institute)

H. A. Van Derck Frechette, B. S. (1941)
Graduate Instructor in the Department
of Ceramic Engineering
(Office—New Ceramic Building)

C. Edward Galbreath, B.A., M.A., Ph.D.
(1939)
George Wesley Rosebush Assistant Pro-
fessor of Economics
(Office—Alumni Hall)

William H. Genné, B.D., M.A. (1940)
Chaplain
Student Pastor and Director of Religious
Activities
(Office—Kenyon Memorial Hall)

Alfred T. Goble, B.A., Ph.D. (1937)
Assistant Professor of Physics
(Office—Hall of Physics)

Ruth P. Greene, A.B., B.L.S., M.S. (1929)
Librarian
(Office—Carnegie Library)

Walter L. Greene, A.B., B.D., D.D. (1926)
Professor of Church History, School of
Theology
(Office—Gothic)

†On leave of absence 1941-42

Thomas S. Halle (1941)
Graduate Instructor in Department of
Industrial Ceramic Design
(Office—New Ceramic Building)

*Charles M. Harder, B.S. (1927)
Professor of Ceramic Art
(Office—Binns Hall)

*William B. Harrison (1937)
Electrical Shop
(Office—Technical Institute Shops)

*E. Fritjof Hildebrand, B.S., A.M. (1922)
George B. Rogers Professor of Industrial
Mechanics
(Office—Shop Building)

*Walter C. Hinkle, B.S. (1937)
Farm Machinery
(Office—Technical Institute Shops)

*Major E. Holmes, A.M., Ph.D. (1932)
Dean, New York State College of Ceramics
(Office—New Ceramic Building)

*William Jaeger, B.S. (1940)
Power Distribution
(Office—Technical Institute)

*Lloyd L. Lowenstein, B.A., Ph.D. (1937)
Associate Professor of Mathematics
(Office—Hall of Physics)

Everett E. Lund, B.S., M.A., Ph.D. (1937)
Associate Professor of Biology
(Office—Allen Laboratory)

James A. McLane, B.P.E. (1928)
Director of Physical Education and of
Athletics, Professor of Physical Edu-
cation
(Office—Gymnasium)

John F. McMahon, B.S. (1937)
Assistant Professor of Ceramic Research
(Office—Binns Hall)

Clarence W. Merritt, B.S. (1925)
Assistant Professor of Ceramic Engineer-
ing
(Office—Binns Hall)

Daniel Minnick, B.S. (1937)
Instructor in Physical Education and
Athletics
(Office—Gymnasium)

J. Gilbert Mohr, B.S. (1940)
Graduate Instructor in Glass Technology
(Office—New Ceramic Building)

*Erie M. Myers, B.S. (1926)
Dairy Engineering
(Office—Dairy Building)

Kaspar O. Myrvagnes, A.M., Ph.D. (1933)
Assistant Professor of German
(Office—Alumni Hall)

*G. Stewart Nease, A.M., Ph.D. (1930)
Wm. C. and Ida F. Kenyon Professor of
Latin and Wm. B. Maxson Professor of
Greek
(Office—Kenyon Memorial Hall)

Clara K. Nelson (1921)
Assistant Professor of Drawing
(Office—New Ceramic Building)

W. Varick Nevins, III, B.S. (1937)
Instructor in Mathematics
(Office—Hall of Physics)

Norman Newman, B.A. (1941)
Assistant in Air Conditioning and Re-
frigeration
(Office—Technical Institute)

J. Nelson Norwood, A.M., Ph.D. (1910)
President
(Office—Carnegie Library)

Paul B. Orvis, B.S. (1936)
Director, New York State Agricultural
and Technical Institute
(Office—Technical Institute)

*Truman A. Parish, B.S. (1936)
Agronomy
(Office—Technical Institute)

Agnes M. Pearson, B.S., M.S. (1939)
Instructor in Business and Secretarial
Studies
(Office—South Hall)

L. Ray Polan, A.B., M.S. (1931)
Assistant Professor of Mathematics
(Office—Hall of Physics)

Hermann Poppelbaum, Ph.D. (1940)
Special Lecturer
Anthropology and Psychology

*Clifford M. Potter, M.S. (1919)
Babcock Professor of Physics
(Office—Hall of Physics)

*Murray J. Rice, A.M., Ph.D. (1927)
Professor of Chemistry in New York
State College of Ceramics
(Office—Binns Hall)

Elbert W. Ringo, A.B., A.M. (1934)
Assistant Professor of Romance Lan-
guages
(Office—Kenyon Memorial Hall)

*George S. Robinson (1918)
Poultry Husbandry
(Office—Technical Institute)

*Lloyd W. Robinson, B.S. (1919)
Animal Husbandry and Farm Management
(Office—Technical Institute)

*Fred W. Ross, B.S., M.S., Ph.D. (1926)
Professor of Botany and Geology
(Office—Kenyon Memorial Hall)

Willis C. Russell, A.M., Ph.D. (1934)
Assistant Professor of History and
Political Science
(Office—Kanakadca Hall)

Anna May Ryno, B.S. (1933)
Assistant Librarian
(Office—Carnegie Library)

*Paul C. Saunders, M.S., Ph.D. (1924)
Professor of Chemistry
(Office—Allen Laboratory)

*Samuel R. Scholes, A.B., Ph.D. (1932)
Professor of Glass Technology and Di-
rector of the Glass Laboratory
(Office—New Ceramic Building)

Lois B. Scholes (1937)
Director of Music
(Office—Technical Institute)

Donald Schreckengost (1935)
Professor of Ceramic Design
(Office—New Ceramic Building)

Harry G. Schurecht, B.S. (1937)
Professor of Research
(Office—Binns Hall)

Ada Becker Seidlin (1920)
Professor of Pianoforte
(Office—Home)

*Joseph Seidlin, M.S., A.M., Ph.D. (1920)
 Professor of Education
 Director of Graduate Division
 Director of Bureau of Appointments
(Office—Hall of Physics)

George B. Shaw, B.D., D.D. (1938)
 Professor of English Bible
(Office—Gothic)

*Herman E. Sicker (1938)
 General Electricity
(Office—Technical Institute)

*C. Duryea Smith, III, B.A., M.A. (1937)
 Assistant Professor of Public Speaking
 and Dramatics
(Office—Green Block)

†John R. Spicer, A.B., A.M. (1935)
 Assistant Professor of English
 Counselor to Prospective Students
(Office—Green Block)

Robert E. Strang, B.S. (1941)
 Assistant in Dairy Manufacturing
(Office—Technical Institute Dairy Bldg.)

Willard J. Sutton, Ph.D. (1941)
 Assistant Professor of Ceramic Engineering
 and Research Ceramist
(Office—New Ceramic Building)

Waldo A. Titsworth, A.M., M.S., Sc.D. (1912)
 Registrar
 Professor of Mathematics
 Registrar of Summer School
(Office—Kanakadea Hall)

Lelia E. Tupper, A.M. (1926)
 Assistant Professor of English
(Office—Green Block)

†On leave of absence, First Semester 1941-42

Edgar D. Van Horn, A.M., D.D. (1927)
 Professor of Theology and Social Science
 School of Theology
(Office—Gothic)

Lloyd R. Watson, A.M., Ph.D. (1931)
 Professor of Chemistry
(Office—Allen Laboratory)

David W. Weaver, B.S., M.S. (1930)
 Assistant Professor of Chemistry
(Office—Allen Laboratory)

Irvin F. Weiss, B.S. (1939)
 Graduate Assistant in Chemistry
(Office—Allen Laboratory)

*John E. Whitcraft, B.S., M.S. (1939)
 Assistant Professor of Business and
 Secretarial Studies
(Office South Hall)

Alfred E. Whitford, A.M., Sc.D. (1932)
 Dean of the College of Liberal Arts
 Stephen Babcock Professor of Higher
 Mathematics
(Office—Hall of Physics)

Leland E. Williams, B.S., A.M. (1929)
 Assistant Professor of Industrial Mechanics
(Office—Hall of Physics)

*Ray W. Wingate (1912)
 Professor of Music
(Office—Green Block)

Alex Yunevich, B.P.E. (1937)
 Assistant Professor of Physical Education
 Head Coach of Athletics
(Office—Gymnasium)

OFFICE DIRECTORY

Joseph J. Auer (1939)

Accountant

(Office—Technical Institute)

James D. Bennelhoff, D.V.M.

Veterinarian

(Office—Technical Institute)

Helen Cottrell (1934)

Secretary to the Director of the Agricultural and Technical Institute

Ben R. Crandall, Ph.D. (1939)

Vocational Counselor

(Office—Green Block)

Burton B. Crandall, A.M., M.B.A. (1930)

Treasurer

(Office—Carnegie Library)

Benjamin F. Crump (1939)

Accountant

(Office—Carnegie Library)

Boothe Colwell Davis, Ph.D., D.D., LL.D.

(1895 - 1933)

President Emeritus of the University

Marian C. Gardiner, B.S. (1934)

Secretary to the Deans

Gay Harder (1940)

Secretary to Director Bureau of Appointments

(Office—Hall of Physics)

R. O. Hitchcock, M.D. (1927)

University Physician

(Office—Home, Clawson Infirmary)

Lucile B. Knapp, B.S. (1930)

Secretary to the President

(Office—Carnegie Library)

Mary K. Lewis (1940)

Assistant in the Registrar's Office

(Office—Kanakadea Hall)

Alice C. McDermott, R.N. (1941)

Supt. Clawson Infirmary

(Office—Clawson Infirmary)

Robert B. Mower, B.S. (1938)

Secretary to the Registrar

(Office—Kanakadea Hall)

Alice Niederhauser (1937)

Secretary to the Dean, New York State

College of Ceramics

(Office—New Ceramic Building)

J. Nelson Norwood, M.A., Ph.D. (1910)

President

(Office—Carnegie Library)

Paul B. Orvis, B.S. (1936)

Director, New York State Agricultural and Technical Institute

(Office—Technical Institute)

Irene C. Post (1932)

Secretary to the Treasurer

(Office—Carnegie Library)

Charles Roberts (1938)

Coordinator of N.Y.A. Boys

(Office—Technical Institute)

Minna Stubbs (1939)

Coordinator of N.Y.A. Girls

(Office—Technical Institute)

Ellen H. Sutton, M.D. (1941)

Assistant Physician

(Office—Clawson Infirmary)

Helen Taylor (1928)
Secretary to the Treasurer
(Office—Carnegie Library)

Katharine S. Titsworth, A.B. (1936)
Assistant in the offices of the President
and Registrar

Ruth D. Whitford, B.S. (1928)
Secretary of the Alumni Association
Assistant Counselor to Prospective Students
(Office—Green Block)

CALENDAR FOR 1941 - 1942

First Semester

Entrance exams. Monday, Sept. 22
Registration for seniors, juniors and
sophomores Mon., Tues., Sept. 22, 23
Freshman Days Tues, Wed., Sept. 23, 24
Instruction begins Thurs., Sept. 25
Founders' Day Exercises Thurs., Nov. 6
Thanksgiving recess begins
Wed., 10 A.M., Nov. 19
THANKSGIVING RECESS
Instruction resumed, Mon., 8 A.M., Nov. 24
Christmas recess begins
Fri., 10 A.M., Dec. 19

CHRISTMAS RECESS

1942
Instruction resumed Monday, 8 A.M., Jan 5
Review Days Mon., Tues., Jan. 26, 27
Mid-year exams begin Wed., Jan. 28
Examinations end; semester ends
Fri., Feb. 6

Second Semester

Registration of new students, Tues, Feb. 10
Instruction begins Wed., Feb. 11
Spring recess begins Fri., 10 A.M., April 3
SPRING RECESS (Easter, April 5)
Instruction resumed Mon., 8 A.M., Apr. 13
Memorial Day Sat., May 30
Review Days Mon., Tues., June 1, 2
Final examinations begin
Tues. P.M., June 2
Senior examinations end Tues., June 9
Final examinations end Fri., June 12

ONE HUNDRED AND SIXTH

ANNIVERSARY COMMENCEMENT

Mon., June 15, 2 P. M.

Summer School, 1942

First session, three weeks—Surveying
Term begins Tues., 10 A.M., June 16
Term ends Fri., July 3
Regular session, six weeks
Term begins Mon., July 6
Term ends Fri., Aug. 14

ATHLETIC SCHEDULES

1941-1942

Varsity Football

Sept. 27—Rutgers at New Brunswick
Oct. 4—Hartwick at Alfred
Oct. 11—Clarkson at Alfred
Oct. 18—Brooklyn at Alfred
Oct. 25—Buffalo at Alfred (Homecoming)
Nov. 1—St. Lawrence at Canton
Nov. 8—Hofstra at Hempstead

Freshman Football

Oct. 25—Buffalo at Buffalo
Nov. 1—U. of Rochester at Rochester
Nov. 8—Scranton-Keystone at LaPlume, Pa.

Varsity Cross Country

Oct. 11—Army at West Point
Oct. 18—R. P. I. at Alfred
Oct. 25—Cornell at Alfred
Oct. 31—Colgate at Alfred
Nov. 8—Buffalo State at Alfred
Nov. 17—I.C.4-A at New York
Nov. 24—N.C.A.A. at East Lansing

Freshman Cross Country

Oct. 18—R. P. I. at Alfred
Oct. 25—Cornell at Alfred
Nov. 17—I.C.4-A at New York

Varsity Wrestling

Feb. 4—Buffalo at Buffalo
Feb. 6—Rochester Mechanics at Rochester
Feb. 14—Colgate at Alfred
Feb. 21—St. Lawrence at Canton
Feb. 25—Buffalo at Alfred
Feb. 27—Case School of Applied Science at Cleveland, Ohio
Feb. 28—Findlay College at Findlay, Ohio
Mar. 6—Tri-State Championships

Varsity Basketball

Dec. 6—Cornell at Ithaca
Dec. 11—Hofstra at Hempstead
Dec. 12—Pratt at Brooklyn
Dec. 13—Brooklyn at Brooklyn
Dec. 15—Hartwick at Alfred
Dec. 20—Rochester U. at Rochester
Jan. 10—Ithaca at Alfred
Jan. 13—Niagara at Alfred
Jan. 17—Cortland at Cortland
Jan. 21—Hobart at Alfred
Feb. 4—St. Lawrence at Alfred
Feb. 7—Buffalo at Buffalo
Feb. 9—Clarkson at Alfred
Feb. 14—St. Bonaventure at St. Bonaventure
Feb. 24—Allegheny at Meadville
Feb. 26—Buffalo at Alfred
Feb. 28—Hartwick at Oneonta
Mar. 6—Susquehanna at Alfred

Freshman Basketball

Jan. 13—Niagara at Alfred
Jan. 21—Hobart at Alfred
Feb. 7—Buffalo at Buffalo
Feb. 14—St. Bonaventure at St. Bonaventure
Feb. 24—Allegheny at Meadville
Feb. 26—Buffalo at Alfred

Six additional games to be scheduled in the fall.

Varsity Track

Mar. 7—I.C.4-A (Indoor at N. Y. C.)
Mar. 28—Rochester at Rochester
Apr. 1—Interclass Meet
Apr. 24—Penn Relays at Philadelphia
Apr. 29—Ithaca at Alfred
May 8—Middle Atlantics at Haverford
May 16—Cortland at Alfred
May 23—Colgate at Hamilton
May 29—I.C.4-A (Outdoor) at N. Y. C.

Fencing, Tennis and Golf to be scheduled in the fall.

ATHLETIC GOVERNING BOARD

1941 - 42 Officers

Chairman—Professor James A. McLane
Vice-chairman—Elton Gamble
Secretary—Reginald Miner

ARTICLE I.—NAME

The name of this organization shall be the Alfred University Athletic Governing Board.

ARTICLE II.—MEMBERSHIP

The following constitute the membership of the Board:

Director of Athletics
Coaches of all sports
Senior managers of all sports
Chairman of the Committee on Athletics
(Board of Trustees)
Chairman of the Committee on Athletics
(Faculty)
Student representatives (2) (Elected by the Student Association)
Two Alumni to be selected annually

ARTICLE III.—OBJECT

Section 1. To submit the budget for the ensuing year to the University for approval.

Section 2. To approve the schedules of all intercollegiate contests.

Section 3. To sanction all insignia and honors recommended by the coaches in their respective sports.

Section 4. To act in an advisory capacity to the Director of Athletics.

Section 5. To elect managers and assistant managers for all sports.

Section 6. To promote good relationships with other universities and colleges.

ARTICLE IV.—OFFICERS

The officers of the board are:

- (1) Chairman (Director of Athletics)
- (2) Vice-Chairman (Student Association representative)
- (3) Secretary (Student Association representative)

ARTICLE V.—DUTIES OF THE OFFICERS

Section 1. The chairman shall:

(a) Preside at the meetings of the Governing Board.

(b) Submit the budget, schedules and policies to the Governing Board for approval.

(c) Be authorized to represent the Governing Board in emergencies.

Section 2. The vice-chairman shall preside at the meetings in the absence of the chairman.

Section 3. The secretary shall keep complete records of all proceedings at the meetings and shall notify members of the committee of a regular or special meeting.

ARTICLE VI.—MEETINGS

Section 1. Meetings shall occur immediately following the close of each seasonal sport.

Section 2. Special meetings may be called at the direction of the chairman or at the request of six members of the Governing Board.

ARTICLE VII.—QUORUM

Ten members including either the chairman or vice-chairman shall constitute a quorum.

ARTICLE VIII.—CHANGE OF CONSTITUTION

An affirmative vote of two thirds of the total membership at a regular or special meeting shall be required to change the

constitution, the change having been proposed at a preceding meeting.

ARTICLE IX.—BY-LAWS

Section 1. Student Varsity Managers:

Shall act as assistants to the Director of Athletics either during his absence or at his request.

Shall work under the direction of the coach in his particular sport in supervising practice, trips, and games; and be responsible for all equipment allotted for his sport.

Shall govern the activities of his assistants and all candidates for managerial positions of his particular sport.

Section 2. Student Freshman Manager:

Shall have as duties the same as the Varsity manager in his particular sport.

Section 3. Election of Managers:

Managers and assistant managers shall be elected by the governing board from such men as have been in competition for the position, unless there is no candidate available. If such be the case, selection of available candidates may be made from the proper class.

At the conclusion of each sport season, upon recommendation of the present manager and coaches, the governing board shall elect Varsity manager, Freshman managers and assistant managers for the coming season.

Section 4. Regulations governing Managers:

(a) A student manager for each Varsity and Freshman sport shall be a Senior unless voted otherwise by a 2-3 majority of the governing board.

(b) Assistant managers for each sport shall be Juniors.

(c) Managers of any particular sport may be removed from office upon recommendation of the coach by a 2-3 majority of the Governing Board.

Section 5. At the last meeting of the school year two Alumni representatives shall be elected to the Athletic Governing Board.

Section 6. Regulations governing athletics:

(a) Major sports are football, basketball, track, cross-country and wrestling. Minor sports are tennis, boxing, fencing, and golf.

(b) Insignia for major sports shall be a 7-inch chenille "A" except that managers' letters shall be designated by small "m" attached to that letter.

(c) Insignia for minor sports shall be a 7-inch chenille block "A" with 3-inch block letters designating the sport on either side, except that managers shall have the small "m" attached.

(d) To win a major "A" in football or basketball, a person must play two-thirds (2-3) of the actual playing time during a season. To win a major "A" in track a person must score at least nine (9) points during the season, those points scored in a conference meet to count double. To win a major "A" in cross country a person must place in a meet won by Alfred or be a point-winning member of a team placing no less than third in a conference meet. To win a major "A" in wrestling, a person must engage in one-half ($\frac{1}{2}$) the meets and obtain a total of nine points for the season. To win a minor "A" in tennis a person must engage in one-half ($\frac{1}{2}$) the matches and win a singles match or pair in a winning doubles match in an inter-collegiate contest.

(e) Numerals shall be awarded for participation in a Freshman sport, under the same regulations that govern Varsity awards.

(f) Upon the recommendation of the varsity manager in any one sport and with the approval of the athletic governing board, freshman numerals shall be awarded to

freshman managers with the following provisions:

1. The numerals shall be earned on a competitive basis.

2. Any number of freshmen may compete for numerals in any one sport.

3. The number of awards shall not exceed fourteen in any one calendar year.

4. The awards shall be distributed as follows:

- a. Football—4 awards
- b. Cross-country—2 awards
- c. Basketball—3 awards
- d. Wrestling—2 awards
- e. Track—3 awards

5. If an insufficient number of freshmen compete in any one sport, the awards shall not be transferred to another sport.

(g) Any person entitled to insignia shall receive a certificate designating authority to wear such insignia. The certificate shall be signed by the Director of Athletics and Coach of that particular sport.

(h) Under special conditions, insignia may be awarded to individuals and teams on recommendation of the coach and approval of the board.

(i) Approved standard sweaters shall be presented to those individuals receiving their major "A" for the first time.

Section 7. Eligibility:

(a) A faculty committee on athletics, appointed by the President of the University, shall have the responsibility of determining the academic eligibility of a candidate for an inter-collegiate team.

(b) In order to be eligible to play on intercollegiate athletic teams a student must be regularly enrolled in Alfred University and must take a minimum of twelve semester hours per week, doing full work in a regular course as defined in the curriculum.

(c) No student shall participate in Varsity inter-collegiate contests until he shall

have been in attendance for one full academic year subsequent to attaining the equivalent of Freshman rank.

(d) No student shall participate in inter-collegiate games for more than three years in the aggregate, and any member of the team who plays in any part of an intercollegiate contest does thereby participate in athletics for the year.

Section 8. General regulations:

(a) The coach shall have complete jurisdiction of the team in all matters of conduct.

(b) The coach shall report to the Committee on Absences of the University immediately after out-of-town games the names of the students who have participated in the contest, the time when they left and when they returned.

(c) No body of students exceeding four in number (two in basketball) shall take part in any contests played out of town, outside of the regular schedule approved by the athletic governing board.

(d) The Junior Varsity shall consist of those men who have regularly participated in practice against the Varsity. The second team shall be under the jurisdiction of the coach, and no group of men other than as above stated shall represent the University in any form of athletics.

Section 9. Upon the completion of three years active service as a Cheerleader, that member shall be awarded a sweater similar to those awarded for excellence in major sports activities in Alfred University. The sweater shall remain the property of the athletic association until that member has actively completed service for the duration of the basketball season of his senior year. Awards shall be made at the beginning of the Senior year.

ALFRED UNIVERSITY INTRAMURAL ASSOCIATION

ARTICLE I.—NAME

The name of this committee is the Alfred University Intramural Association.

ARTICLE II.—MEMBERSHIP

The following constitutes the membership of the Association:

One member representing each fraternity and one representative from any group entering a team in organized contests.

Each organization shall be taxed the sum of \$1.00 for each sport in which they participate.

ARTICLE III.—OBJECT

Section 1. To promote better feeling and sportsmanship on the campus.

Section 2. To provide for organized intramural competition.

Section 3. To enable a larger group to participate in organized sports.

Section 4. To promote interclass competition.

ARTICLE IV.—OFFICERS

The officers of the association are:

- (1) President
- (2) Vice-President
- (3) Secretary-Treasurer

ARTICLE V.—DUTIES OF OFFICERS

Section 1. The President shall:

(a) Preside at the meetings of the Intramural Association.

(b) Submit budget and policies to the Association.

(c) Make all schedules for Intramural sports.

Section 2. The Vice-President shall in the absence of the president preside at all meetings.

Section 3. The Secretary-Treasurer shall keep complete records of all proceedings at the meetings and notify all members of association of regular or special meetings. Also keep a financial record which must be submitted to the Student Senate for approval.

ARTICLE IV.—MEETINGS

Section 1. All meetings shall be called at the direction of the president.

ARTICLE VII.—QUORUM

Section 1. One-half of the members of the association, including the president or the vice-president constitute a quorum.

ARTICLE VIII.—CHANGE OF CONSTITUTION

Section 1. An affirmative vote of 2-3 of the total membership at a regular or special meeting shall be required to change the constitution, the change having been proposed at a preceding meeting.

ARTICLE IX.—BY-LAWS

Section 1. Election of Officers. Officers shall be elected annually at a meeting held at the close of the softball tourney.

Section 2. Eligibility:

(a) All members competing in intramural sports must be regularly enrolled students carrying not less than 10 semester hours.

(b) All persons on either the Varsity, Jay-Vee or Freshman basketball squads are ineligible to play in intramural basketball competition.

(c) All persons having earned a Varsity "A" in basketball are ineligible in basketball competition.

(d) Officials at all intramural contests shall be appointed and approved by the Association.

Section 3. Any organized group can enter a team in any intramural sport.

Section 4. All teams entered in basketball tournament must have individual jerseys for players.

Section 5. To retire any trophy from competition any group must win three "legs" on the trophy for which they are competing.

Section 6. The Association shall make awards at the conclusion of each sport. The number of awards shall be decided upon by the Association.

Section 7. Lists of team members must be handed in to the Association within a week after competition begins. Lists must be complete as there will be no changing of lists after said date.

WOMEN'S ATHLETIC ASSOCIATION

1940 - 1941 Officers

President—Betty Tim Kaiser

Secretary—Ann Bastow

Treasurer—Jane Morris

CONSTITUTION

(Revised 1940)

ARTICLE I—NAME

The name of the organization shall be the Women's Athletic Association of Alfred University.

ARTICLE II—MEMBERSHIP

Section A. All college women shall be members of the Association.

Section B. The following shall constitute the membership of the W.A.G.B.:

The Athletic Director for Women
One Faculty Advisor
One Representative from each of the four classes

The President of Alpha Tau Theta

Section C. Perpetuation of Membership.

The Board shall perpetuate itself by electing to membership at the regular meeting in May a group of girls who have indicated their interest in membership and a faculty advisor.

ARTICLE III—OBJECT

Section A. The object of the Board shall be to promote and supervise the athletic activities of the women of the University and to stimulate interest in all forms of exercise.

Section B. To approve all intra-mural contests.

Section C. To sanction all insignia, honors and prizes recommended by the managers in their respective sports.

Section D. To supervise expenditures.

ARTICLE IV—OFFICERS

Section A. The officers of the Board shall be: President, Secretary, Treasurer.

ARTICLE V—DUTIES OF OFFICERS

Section A. The President.

1. Shall preside at all meetings of the committee and shall have immediate and personal supervision over all the details in connection with the Women's Athletic events of the University.

2. Shall be invested with the authority to represent the Committee in the emergencies.

Section B. Secretary.

1. She shall keep complete records of all the proceedings of the committee.

2. Shall notify all members of the date of meetings.
3. Shall attend to all correspondence necessary to the business of the Board.
4. Shall keep a record on file of all athletic records, winners of contests and intra-mural contests.
5. Shall observe that all motions made are in accordance with the constitution.

ARTICLE VI—MEETINGS

Section A. The first meeting of the school year shall occur on the Tuesday following the opening of the Fall Semester.

Section B. There shall be a monthly meeting at a time decided upon by the Board at the first meeting of the year.

Section C. A special meeting may be called by the President or at the request of any three members.

Section D. A Faculty Member must be present at all meetings.

Section E. There shall be a meeting of all Freshmen women at the beginning of the year.

ARTICLE VII—VOTING

Section A. Six members shall constitute a quorum.

ARTICLE VIII—SPORTS

Section A. Major sports for women shall consist of Hockey, Basketball, Archery, and Badminton.

Section B. Minor sports for women shall consist of Tennis, Baseball, Ping Pong, Swimming, Hiking, and Fencing.

Section C. There shall be an upper-student Manager for each of the Major sports. Recommended.

Section D. Position of point-recorder shall be delegated to one of its members.

(a) Duties of the Managers:

1. Shall be responsible to the President for the administration of the sport.

2. Shall meet class captains of the sport for the purpose of explaining respective duties.

3. Shall give to the respective class managers their record books in which shall be kept attendance and training.

4. Shall notify the Point-Recorder of the number of points obtained by each person in her sport.

5. The Publicity Manager shall keep notices of women's athletics in the *Fiat Lux*.

6. The Publicity Manager shall take charge of any other publicity necessary to women's athletics.

7. The Publicity Manager shall keep a scrap book of *Fiat Lux* reports and present it to the Board at the end of the year.

ARTICLE IX—POINT SYSTEM

Section A. Points shall be awarded in the following manner:

In Major Sports, Hockey and Basketball.

- | | |
|---|----|
| a. Class and intra-mural team membership | 5 |
| b. Champion team membership..... | 7 |
| c. All Alfred team membership..... | 10 |
| d. Honorable mention on All-Alfred team | 7 |
| e. Captains and Managers of class and intra-mural teams | 1 |
| f. Time and Score Keeper | 1 |

Section B. Points shall be awarded in the following manner in Archery:

- | | |
|---|----|
| a. Membership on the telegraphic team | 10 |
| b. Entering in any Tournament..... | 2 |
| c. Placing first in any tournament adds | 7 |

- d. Placing second in any tournament
adds 5

Badminton :

- a. Membership on Club Team—First
String 10
- b. Others on Club Team..... 5
- c. Placing 1st in tournament..... 7
- d. Placing 1st in consolation 5
- e. Placing semi-finals 2nd 5
- f. Entry 2

Section C. Minor Sports :

- a. Hiking, Swimming and Fencing.
Any girl participating in 75% of the
activity shall receive 3
- b. Ping-Pong and Tennis:
Entry in tournament 2
Placing first 3
(Any person defaulting in the first-
round shall not receive credit.)

c. Baseball :

- Any girl representing her class team 1
- Any girl on the championship team.. 2

d. Any girl participating in any unorgan-
ized athletic activity for 12 hours per
semester shall receive one (1) point, pro-
viding she submit, at the time of the ac-
tivity, a slip indicating the time, date, and
the activity.

Section D. Any girl participating in a
Sport's Day program shall receive 4.

Section E. A Member of the Women's
Athletic Governing Board shall receive 5.

Section F. A girl is limited to fifteen
points per year in any sport.

Section G. Any girl refereeing in as
many games as required by team compe-
tition shall be awarded for officiation 5.

ARTICLE X—AWARDS

Section A. The Board shall sanction
and approve all merited awards and shall
recommend to the Student Senate that the
approved standard blazers be presented at
the time of the annual banquet of the year
to all upperclass women who, having won
the Varsity Old English "A", have been
voted this honor by the Board.

Section B. Blazers are awarded upon
outstanding qualities of leadership, ability,
and personality.

Section C. The Old English "A" shall be
awarded to all those girls who shall earn
65 points in athletics.

ARTICLE XI—AMENDMENTS

Section A. The constitution may be
amended by a quorum vote at any meeting.

Section B. The proposed amendment
must be presented at the meeting previous
to the meeting of voting.

TRACK AND FIELD RECORDS AT ALFRED UNIVERSITY

Correct to Spring of 1942

VARSITY

EVENT	TIME	NAME	CLASS	YEAR
100 yd. dash	9.9 sec.	Everett Leahy	'43	1941
220 yd. dash	21.9 sec.	Everett Leahy	'43	1941
440 yd. dash	16 sec.	Newell Wallace	'34	1934
880 yd. run	1:56.0	Emil Zehiegner	'30	1929
1 mile run	4:19.4	Wilbur Getz	'29	1929
2 mile run	9:44.2	Bradley Rendell	'41	1939
2 mile run	9:23.1	Bradley Rendell	'41	1939
Unofficial				
120 yd. high hurdle	16"	Louis Schiffner	'36	1936
220 yd. low hurdle	25.3"	Louis Schiffner	'36	1935
Pole vault	12'10 7/8"	Charles Clarke	'35	1934
Running high jump	6'1"	Walter Johnson	'41	1940
	(Indoor)			

Running broad jump	22'9"	Joseph Majeske	'39	1938
16 pound shot	47'9"	Mearl Greene	'42	1941
Discus	144'3"	Mearl Greene	'42	1941
Javelin	183' 7 7/8"	Aaron Arnold	'38	1936
Mile relay	3:30.2"	Jones, Dawson, Gianassio, Minnick	'37	
Mile Relay (Unofficial)	3:27.1	J. Kelly, E. Leahy, R. Marks, F. Heasley	'36	1935
4-5 Mile relay	2:41	Morley, Gehrke, Kelly, Dauenhauer	'43	1941
				1939

FRESHMEN

EVENT	TIME	NAME	CLASS	YEAR
100 yd. dash	10 sec.	Everett Leahy	'43	
		Urban Ludwig	'44	
220 yd. dash	22.7 sec.	Everett Leahy	'43	
440 yd. dash	51.8 sec.	Maynard Jones	'37	1934
880 yd. run	2:02.3	Lawrence Scudder	'44	
1 mile run	4:33.4	Lawrence Scudder	'44	
2 mile run	10:07.4"	Elton Gamble	'42	1939
120 yd. high hurdle	16.9 sec.	Edward Hirnle	'44	

TRACK AND FIELD RECORDS AT ALFRED UNIVERSITY

Correct to Spring of 1942

FRESHMEN (Continued)			CLASS	YEAR
EVENT	TIME	NAME		
220 yd. low hurdle	27.8"	Bissell	'39	1936
Pole vault	11'11 1/2"	Walter Sheard	'44	1937
Running high jump	5' 9 1/2"	John Halpin	'39	1926
Running broad jump	21' 4"	A. W. Stuart	'42	1939
12 pound shot	50' 4"	Merle Greene	'42	1939
Discus	129' 9"	Merle Greene	'41	1938
Javelin	160'	Harold Glinksky	'43	1940
4.5 mile relay	2:45.2	Hensley, Septon, Leahy, Marks	'31	1928
1 mile relay	3:37.4"	Oburn, Stulman, Steele, McFadden	'41	1938
Medley relay (880, 440, 220, mile)	8:03.3"	Edwin Lagasse Clifford Leahy Joseph Kelly Engene Burgess		

FATERNITIES, SORORITIES AND INDEPENDENTS

Delta Sigma Phi

President—Harold Weaver
Vice-president—Donald Burdick
Secretary—Joseph Salese
Treasurer—Robert Burton

Kappa Nu

President—Cliff Reader
Vice-president—Harold Barr
Secretary—Burrill Friedman
Treasurer—Cliff Reader

Kappa Psi Upsilon

President—Douglas Reals
Vice-president—Alex Ferguson
Secretary—John Powell
Treasurer—John Ray

Klan Alpine

President—George Kellogg
Vice-president—Ralph Rhodes
Secretary—Coulson Hageman
Treasurer—Burton Baker

Lambda Chi Alpha

President—Stanton Langworthy
Vice-president—Robert Sinclair
Secretary—Douglas Taylor
Treasurer—Lee Holtink

Theta Gamma (Technical Institute)

President—Charles Eckbloom
Vice-president—Dan Mulkane
Sec. Treasurer—Walter Mosher

Kappa Delta (Technical Institute)

President—John Luttrell
Vice-president—William Hurd
Secretary—Wayne Schweigert
Treasurer—Byron Worthing

BETA TAU BETA
(Technical Institute)

Vice-president—Melvin Palius
President—Albert Shaw
Secretary—Herman Dym
Treasurer—Saul Biales

INTERFRATERNITY COUNCIL

1941-1942 Officers

President—Carl Husted, Delta Sigma Phi
Vice-president—Clifford Reader, Kappa Nu
Secretary—Robert Jolley, Lambda Chi Alpha
Treasurer—Alexander Ferguson, Kappa Psi
Upsilon
Director of Sports—James Lippke, Kappa
Psi Upsilon

CONSTITUTION

We, the men's fraternal organizations of Alfred University, in order to promote harmony and mutual understanding among the fraternities on the campus; to act as an interpreting medium between the faculty and the allied organizations on the campus of the University; to lay and enforce rules for governing all situations of common interest to the fraternities, do hereby adopt and agree to be governed by the following Constitution and By-laws.

ART. I.—NAME AND OBJECT

Sec. 1. The name of this organization shall be "The Interfraternity Council of Alfred University."

Sec. 2. The object of this organization shall be to control and regulate all matters that may be determined to be of mutual interest to the various organizations herein represented.

ART. II.—MEMBERSHIP

Sec. 1. The council shall be composed of two representatives who are members of either of the two upper classes (Junior and Senior) from each member organization.

Sec. 2. Each fraternity shall be entitled to one vote in any meeting of the Council.

Sec. 3. Any new fraternity organized on the campus, upon approval by the faculty, must become a member organization of the Council.

Sec. 4. Representatives shall be elected during the first week of May, and shall act as an observing body in the remaining Council meetings of that year.

Sec. 5. By May 15, each fraternity shall purchase a bond of \$100 from the University Bank, said bond to be renewed by April 15 of each succeeding year. Failure to renew this membership by any member fraternity shall result in its forfeiture to the Interfraternity Council.

Sec. 6. Any member organization of the Interfraternity Council choosing to withdraw shall automatically forfeit its membership bond.

ART. III.—OFFICERS AND DUTIES

Sec. 1.—Officers shall be elected at the final meeting of the Council.

Sec. 2. The officers of the Council shall be a President, a Vice-president, a Secretary and a Treasurer.

Sec. 3. The duties of the officers shall be in general those pertaining to their respective offices by parliamentary custom.

Sec. 4. The Secretary shall furnish a copy of the minutes of each meeting of the Council to each member fraternity by the Monday following the night on which the meeting is held.

Sec. 5. The Treasurer shall pay out money only by the direction of the Council.

Sec. 6. The President shall be required to call a meeting of the Council the second and fourth Wednesday nights of each month of the college year.

ART. IV.—TRIBUNAL

Part 1. *Membership.*

Sec. 1. There shall be a tribunal composed of a faculty member from each fraternity represented on the Interfraternity Council and a faculty member who is not a member of any Alfred fraternity, who shall act as chairman of the tribunal.

Sec. 2. Each fraternity shall select its representative to the tribunal during the first week in May.

Sec. 3. The Interfraternity Council shall elect the non-fraternity member.

Sec. 4. The members of the tribunal shall serve for one year unless re-elected.

Part 2. *Powers.*

Sec. 1. The tribunal shall be a final court of appeal in all matters, and may be appealed to by any member fraternity of the Council.

Sec. 2. The tribunal shall have the power to impose all penalties.

Part 3. *Conduct Bonds.*

Sec. 1. There shall also be purchased and maintained a bond of \$50 for conduct offenses, the nature and magnitude to be determined by the tribunal.

Sec. 2. All fines shall be payable to the tribunal which in turn shall be given to the treasurer of the Interfraternity Council.

ART. V.—PLEDGING

Sec. 1. Kappa Nu shall be exempt from all rushing and bidding rules in the Interfraternity Council. This provision shall hold unless another Jewish fraternity should be formed. In that event all fraternities shall come under the ruling of the Council.

Sec. 2. No man shall have a pledge pin in his possession until pledged according to the by-laws of this constitution, nor shall he be considered pledged until he wears a pledge pin in the proper place, or has signified in writing his intentions of joining a given fraternity.

Sec. 3. No fraternity shall bid or pledge a man who matriculates the first semester until he has attended Alfred University through one closed season.

No fraternity shall pledge an eligible man who matriculates the second semester until he has attended through one closed season.

Sec. 4. *Rushing Rules.*

a. Closed season shall be defined as the period from the beginning of college instruction in the fall until the Tuesday that all bids are returned to the respective fraternities.

b. (1) During a closed season no eligible man is allowed in a fraternity house except for the time allotted each Monday, Wednesday and Friday evenings, and Saturday afternoons and evenings.

(2) During the closed season no fraternity shall be allowed to entertain more than five eligible men on Monday and Wednesday nights from 5:30 until 11:00.

(3) On Friday night of closed season from 7 until 12 P. M. each fraternity shall be allowed to entertain one-fourth of the eligible men selected by Article V. Not more than twenty cents per eligible man may be spent in entertaining the men.

c. On Saturday afternoons from 1:30 to 7 each fraternity may entertain ten men, and on the days of the home football games these ten men may be entertained from 1:30 P. M. until 12:00 P. M.

d. Representatives from each fraternity must meet at least four days before the first Friday of rushing and divide the eligible men into four equal groups or as nearly equal as possible, which shall be

guests at the different fraternities on successive Friday nights. (That is, each group shall visit each house at least once.)

e. No fraternity men except those men working at Bartlett Dorm are to be allowed in the Dormitory between the hours of 7:00 P. M. and 7:00 A. M. during Rushing Season.

Sec. 5. Pledging shall be subject to the following rules:

a. On the morning after the last rush party, each eligible man shall receive a preferential card from a clerk appointed by the Council which must be filled out and returned by the 6 o'clock mail that same night. On or before 6 P. M. of this same night, each fraternity must have in the hands of the clerk a list of the eligible men they will accept as pledges.

b. Each house shall be limited to 17 freshmen preferentials.

c. Each house shall be permitted to maintain 17 men in each class; a man's class to be considered the one with which he is connected upon entrance.

d. Honorary members shall be exempt from the quota but may not be pledged until the conclusion of the regular rushing season.

e. A list of all bona fide pledges must be posted by the clerk of the Council by 10 A. M. of the following Wednesday morning immediately after the closed season has terminated.

f. All eligible men must be in their place of residence from 7 P. M. to 8 P. M. the Tuesday evening after bids are sent in.

g. Silent period shall extend from the last Friday of rushing at midnight until Saturday at 6 P. M. Silent period is limited to merely saying "Hello" to an eligible man and prohibits the association of fraternity men in any manner whatever with eligible men.

h. The first four weeks of school shall be a non-rushing period, during which time

Freshmen are forbidden to enter into or on fraternity property.

i. There shall be a closed season from the Wednesday after pledging until one week from the following Thursday at 6 P. M. After this time there shall be unlimited rushing.

j. Any house may pledge any eligible man other than a Freshman at any time. An eligible man is defined as any man who has never been connected with a fraternity and has been through one closed season, or a man who has been connected with a fraternity and has been through a closed season since depledging.

k. Each fraternity must charge its pledges at least \$9 yearly fee, and may charge any amount over that if it sees fit to do so.

Sec. 6. a. No rush party or part of a rush party shall be held in the home of, or sponsored by, an alumnus, honorary, or active member of a fraternity. No *Eligible Man* shall room or board in any fraternity house until he has been pledged by the fraternity. No fraternity shall approach any man when he has been pledged to another fraternity or has signified in writing his intention of being pledged.

b. No woman shall take part in any rushing function at a fraternity house.

c. No fraternity shall pledge a man who has worn the pledge pin of another fraternity of this council until the beginning of the next school year. If a man should have a pledge pin taken from him, the council shall be informed by the fraternity whose pin he wore, and the circumstances concerning his case.

ART. VI.—INITIATION

Sec. 1. No man shall be formally initiated into any fraternity until he has attained an index of 1. for his first semester, or any subsequent official index.

Sec. 2. After a man has been initiated into a fraternity represented on this council he is not eligible for membership in any other fraternity during his stay in Alfred.

ART. VIII

Sec. 1. All motions pertaining to reprimands, penalties, suspensions and expulsions shall be carried by a two-thirds vote.

Sec. 2. All amendments shall be carried by a unanimous vote.

ART. VIII

Sec. 1. These rules shall be subject to revision at any time throughout the school year by a unanimous vote, not previous to three weeks after the proposal.

Delta Sigma Phi
Kappa Nu
Kappa Psi Upsilon
Klan Alpine
Lambda Chi Alpha

SORORITIES

1941-42 Officers

Pi Alpha Pi

President--Katherine Hardenbrook
Secretary--Eloise Bassett
Treasurer--Cleo Crawford

Sigma Chi Nu

President--Alice Schryver
Vice-president--Sally Jane Morris
Secretary--Audrey Place
Treasurer--Beatrice Nash

Theta Theta Chi

President--Barbara Hill
Chaplain--Elizabeth Stangl
Recording Secretary--Harriet Klees
Corresponding Secretary--Ruth Woelfel
Treasurer--Rhoda Ungar

INTERSORORITY COUNCIL

CONSTITUTION

Art. 1. NAME AND OBJECT--Sec. 1. The name of this organization shall be the Women's Intersorority Council of Alfred University.

Sec. 2. The object of this organization shall be to control all matters which may be determined to be of interest to the various organizations herein represented.

Art II. MEMBERSHIP. --- Sec. 1. The council shall be composed of two representatives from each woman's fraternity, at least one of whom shall have served previously.

Sec. 2. Each representative shall be entitled to one vote in each council meeting, except the President who votes only in case of tie.

Sec. 3. Any new woman's sorority on the campus, being recognized by the faculty, automatically becomes a member of the council, after signing the Constitution.

Art. III. OFFICERS AND DUTIES--Sec. 1. The officers shall consist of a President, who shall be a Senior and a Secretary-treasurer.

Sec. 2. The officers of the Council shall be elected at the last meeting of the college year, when the old and new Councils shall meet together. The new Council alone shall have power to vote at this election.

Art. IV. POWERS.--The Council shall have power to enforce all enactments, regulations, etc., within its jurisdiction as defined by the articles and by-laws of this constitution.

Art. V. RUSHING.--Sec. 1. A Rushee is defined as meaning a Freshman woman or transfer.

Sec. 2. Rushing Season :

(a) There shall be a *closed* period of the first semester. At the end of this time rushing shall be done in an open period.

(b) *Open* period shall be the first two weeks of the second semester.

(c) *Closed* season shall include only "dutch treat" entertainment, and a sorority girl shall not accompany a rushee to any activity other than college functions.

Saturday afternoon rushing at the house is still permitted under arrangements made by the Council. There shall be no entertainment for a sorority by a resident active member, an honorary, or an alumna.

(d) During closed season sorority girls will be allowed to visit rushees at the Brick or their place of residence only during relaxation periods as described by the Brick House Rules.

(e) Open season shall include entertainment, with expense, at the houses, to be arranged by the council during closed season.

(f) Honorary members may be invited to the house at the times of entertaining the Freshmen.

(g) Sorority girls may not take rushes home with them or vice versa.

(h) All rules apply to vacation as well as to the school session.

Art. VI. BIDDING AND PLEDGING.—Sec.

1. A bulletin will be issued with the rules of preferential bidding stated. To this bulletin shall be added a financial statement denoting the living expenses of each sorority, including price of room, board and dues. This shall be read at a meeting of "rushees" just before bids are sent out.

Sec. 2. Bidding shall be done by the preferential system in mid-winter.

Sec. 3. Upon receiving preferential slip a "rushee" shall make her decision for a sorority in absolute secrecy.

Sec. 4. Silence shall be from the time of the last dinner until the bid is accepted.

Sec. 5. Silence is defined as merely saying "hello".

Sec. 6. Sororities shall not be discussed with "rushee."

Sec. 7. A disinterested person to act as Clerk to the Council. (The duties shall be defined by the Council.)

Sec. 8. No one shall consult the Clerk during bidding except in vote of the Council.

Sec. 9. All problems of bidding shall be dealt with by the Council.

Sec. 10. The Clerk together with the council shall call a meeting of all rushees on a Monday night at the end of the two week period. At this meeting preference slips shall be given to such rushees as whose names appear on the preference lists of the sororities previously submitted to the Clerk. These slips are marked, signed and handed to the Clerk at this time.

Sec. 11. Bidding of honorary members shall take place after Christmas recess.

Art. VII. INITIATION.—Sec. 1. Each sorority shall determine the date of its initiation services.

Sec. 2. No woman shall be formally initiated into any sorority until she has attained an index of 1.0.

Sec. 3. After a woman has been initiated into a sorority represented on this Council, she is not eligible for membership in any other sorority represented on this Council during her stay in Alfred.

Art. VII. VOTING.—Sec. 1. All voting shall be done by secret ballot unless otherwise designated.

Sec. 2. All matters pertaining to reprimand, penalties, suspension and expulsion shall be carried by a 2-3 majority vote.

Art. IX. MISDEMEANORS.—Sec. 1. Any sorority member who belittles or attempts to belittle or degrade any other sorority by word or action, or attempt to coerce the opinion of a Freshman with the help of a

non-member shall be considered as having committed a misdemeanor requiring judicial action by the council.

Sec. 2. If a sorority woman has broken a council rule, she shall have a hearing with the council, in which the two representatives of that sorority shall have a hearing; then the other four Council members, together with the disinterested person, shall decide the punishment unanimously.

Sec. 3. Any sorority or any of its members breaking a rule of the council shall be penalized as a house, such penalty to be decided by the council.

(a) The penalty for Article 6, Sec. 5, shall be the depriving of an overnight for the coming year.

(b) Penalty for Article 6, Sec. 6, and Article 9, Sec. 1, shall be the depriving of a dinner during the current rush period. The choice as to which dinner shall be left to the council to decide.

Art. X. RESIGNATION.—No representative shall resign without the consent of the Council and her fraternity.

Art XI. MEETINGS.—Special meetings may be called at any time by the President, the Secretary-treasurer or by the decision of three members.

Art. XII. AMENDMENTS.—Sec. 1. Amendments to this constitution may be suggested by any sorority. The Council may vote upon it at any time after it has been submitted to the sororities.

Sec. 2. All amendments to be carried must receive unanimous vote of the Council.

Sec. 3. The council shall call a compulsory meeting of all Freshmen and transfer women in the fall to acquaint them with the constitution of Inter-Sorority Council. A similar meeting will be called immediately before rushing.

Sec. 4. The council shall call a compulsory meeting of every sorority girl to impress upon her the intersorority rules. This meeting shall be immediately preceding formal rushing.

Sec. 5. There shall be a meeting of the council following rushing season to discuss any misdemeanors or penitencies.

INDEPENDENT GROUP

1941-1942 Officers

President—Arthur Petri
Vice-president—Mary Ellen Mills
Secretary—Emma Jo Hill
Treasurer—Norman Ruderman

The outstanding achievement of the Independent group of Alfred University this past year is found in the aid which it gave the students of the New York State Agricultural and Technical Institute in the organization of an Independent group of their own. The two groups share social activities but retain their individual identity for convenience in business matters.

It is the aim of the Independent groups to bring together the non-fraternity men and the non-sorority women in closer social relationships.

AG TECH INDEPENDENTS

1941-42 Officers

President—Maurice J. Smith
Vice-president—Shirley Wigren
Secretary-Treasurer—Ethlyn Baldyin
Social Chairman—Thresa Di Francisco

The Independents of the New York State Agricultural and Technical Institute were organized last year for students who are not affiliated with a fraternity. Its primary purpose is to bring the student body together in social and scholastic life. It strives to form a bond with the Independents of Alfred University.

CLUBS AND HONORARY SOCIETIES

FORENSIC SOCIETY

1941-42 Officers

President—Herman Eichorn
Secretary-Treasurer—Arnold Livingston
Manager-Vice President—Robert Meyer

The Forensic Society is the debating society of Alfred University. Emphasis is on prepared talks and discussions on important public issues. Last year Alfred participated in a number of important debates, and arrangements are being made for her continued participation this year.

MATHEMATICS CLUB

1941-42 Officers

President—George LeSuer
Secretary—Jean Torrey
Treasurer—Margaret Ames

The Mathematics Club is an organization on Alfred's campus designed to promote an acquaintance with topics not ordinarily presented in classroom study. The Club

was fortunate in having some interesting lectures by members of the faculty and outside speakers.

SODALITAS LATINA (Latin Club)

1941-42 Officers

President—Jean Merritt
Vice-President—Margaret Wingate
Secretary—William Woods

The Latin Club is an organization to furnish those students interested in Latin a further opportunity of learning the customs of the Roman people and of relating these to modern life. The meetings, held monthly, are partly social and partly educational.

DEUTSCHER VEREIN (German Club)

1941-42 Officers

President—Robert Young
Vice-President—Ruth Rogers
Secretary-Treasurer—Grace M. Schlisman

Membership in the German Club is offered to all students interested in German. The club meets semi-monthly, offering an opportunity to students of gaining a more comprehensive knowledge of German and Germany through conversation, games, talks, readings, slides, and motion pictures.

AMERICAN CERAMIC SOCIETY

1941-42 Officers

President—George Kellogg
Vice-President—Royce Luce
Secretary—Ralph Rhodes
Treasurer—David Armant

This is an organization for all the students enrolled in the General Ceramic Engineering and Glass Technology courses

and a national organization for all the leading men in the Ceramic Industry.

Several important men in the field are attractions for some of the meetings of the year. Dr. Hall, research engineer of Onondaga Pottery Co., Mr. L. I. Shaw, research engineer for the Western Electric Co., and other distinguished men in the industry have spoken before the society.

Each year the seniors of the Ceramic College feature the annual St. Patrick's Festival, at which time some outstanding senior is chosen to represent St. Pat, the patron saint of all engineers. Two days of festivity mark this affair which is climaxed by the grand ball at which the campus queen is crowned.

CERAMIC GUILD

President—Nettie Ann Rapp
Vice-president—Arthur Crapsey
Secretary—Cleo Crawford
Treasurer—Eloise Bassett

This is an organization for the Ceramic Art students. It was organized to give experience and stimulate interest in commercial methods of pottery making. Members are chosen from the junior and senior art students whose work and interest qualifies them. Some of the proceeds from annual sales are retained by the members, the freshmen and sophomores working gratis.

FOOTLIGHT CLUB

President—Margaret Aylor
Vice-president—Arthur Crapsey
Secretary—Jean Merritt
Treasurer—Paul Pettit

The Footlight Club is an organization to promote the best in dramatic production. Its members are chosen from those who show the most ability for acting or stage production. Much of the success of the

University's dramatic season is due to the cooperation of the members of the Footlight Club.

THETA ALPHA PHI

The New York Alpha Chapter of Theta Alpha Phi, the national honorary dramatic fraternity, is located at Alfred University. Its membership is made up of those who have shown unusual interest in, and have particular aptitudes for, dramatic production in its various phases. Theta Alpha Phi, with the assistance of the Footlight Club, presents the "Frosh-Soph Plays" early in the Fall of each year in an attempt to ferret out outstanding material from among the lower classmen on the campus. They also present at least two full length plays during the year.

PHI SIGMA GAMMA

Phi Sigma Gamma, the women's honorary fraternity of Alfred, aims to be a positive factor in Alfred's growth, to maintain and extend a spirit of cooperation and good will between fraternity and non-fraternity groups, and to uphold true Alfred ideals and express these ideals in service to Alfred. Each year those women who have best expressed these ideals are elected to membership. Eligibility is limited to twenty-five upper class women.

ETA MU ALPHA

Eta Mu Alpha, honorary scholastic fraternity on Alfred's campus, has for its goal the promotion of better scholarship and keener interest in things intellectual among the student body of the University. Only Juniors with an accumulative index of 2.4 and Seniors with one of 2.2 are eligible for this honor.

KERAMOS

President—David Armant
Vice-president—Robert Dows
Secretary—James Prokopec
Treasurer—Burton Baker
Herald—Douglas Beals

Keramos is the National Professional Engineering Fraternity. Its membership is composed of students from ceramic colleges throughout the country, and men particularly prominent in the field of ceramics. The principal object of the fraternity is to promote and emphasize scholarship and character in the thoughts of the ceramic students, to stimulate mental achievement, and to promote interest in ceramic engineering. Membership is based on scholastic record and interest in ceramics and is the highest honor a student engineer can attain.

ALPHA TAU THETA

Alpha Tau Theta is an honorary athletic fraternity for women of Alfred. Its aims are the development of loyalty to the ideals of true sportsmanship and the recognition and emphasis of worthwhile achievements in sportsmanship and leadership. This organization cannot include in its members more than one-tenth of the women of the student body and these members must maintain an index of 1. The director of athletics for women is always an associate member.

BLUE KEY

The Blue Key is an honorary fraternity composed of upperclassmen, recognized for their character, scholarship, student activities, leadership, and spirit of service on the campus. As a service organization, the Blue Key welcomes visiting groups on the campus, arranges intramural athletic con-

tests, and performs other services as occasion arises. The Freshman Court, now reorganized, is under the jurisdiction of the Blue Key in connection with the Student Senate.

1-3-6 CLUB

1941-42 Officers

President—Robert Dows
Vice-president—Laur Don G. Wheaton
Secretary-treasurer—Joseph Chait

The 1-3-6 Club was formed by the students enrolled in the Ceramic College for a furtherance of interest in glass. All students taking the Glass Technology course are eligible for membership. The meetings are held every two weeks and these meetings feature talks by the students themselves who have had industrial experiences in this field.

LE FLEUR DE LIS (French Club)

President—Josie Procopio
Vice-president—Lois Creighton
Secretary—Rachel Peterson
Treasurer—Margaret Ames
Historian—Alice Lundy

The Fleur de Lis is a student organization formed for the purpose of attaining greater fluency in the speaking of French. The club plans an extensive "French Week" program in the spring and sponsors French movies during the year. At the bi-weekly meetings, members often present papers on appropriate topics. Membership is open to all French majors.

ASTRONOMY CLUB

The Astronomy Club is a club formed by students in astronomy wishing to learn

more of the universe beyond the range of the eye. Meetings at intervals provide students with the opportunity of "star gazing" and discussions of the interesting phases of the universe. Occasional trips are made to nearby observatories.

INTERNATIONAL RELATIONS CLUB

The International Relations Club is an active group on the campus, holding frequent discussions of important national and international questions. It is affiliated with the Carnegie Foundation of Peace.

MARKETEERS CLUB

1941-42 Officers

President—Lyle Dye

Vice-president—Ethelyn Baldwin

Secretary-Treasurer—William Graves

The Marketeers Club was formed in November, 1939, by a group of interested members of the class in marketing. The aim of the club is to supplement class lectures and discussions with meetings to which executives and marketing specialists are invited. In addition to the discussions, the club hopes to take at least one field trip a year. Although first organized as a club for Agricultural students, it has proven itself to be a very valuable organization for students of Economics in the Liberal Arts College.

FARM MACHINERY CLUB

From the Farm Machinery course in the Agricultural School has evolved this active organization. Its purpose is to promote better scholarship and better fellowship among those interested in this field of work.

PHI PSI OMEGA

The aim of this honorary fraternity is to recognize men for their scholastic record, athletic ability, character and loyalty to Alfred. It is hoped that through striving to gain membership in this organization the high ideals of Alfred will be maintained.

PI GAMMA MU

The national honorary social science fraternity was brought to the campus in 1927 to awaken interest and encourage underclass study in the field of social science. Membership includes a limited number of the faculty and upperclass members who must have an average index of 1.5 and 20 hours of study in the social sciences.

SPIKED SHOE

The Spiked Shoe is a branch of the National Collegiate Society of Spiked Shoe which is organized for the promotion of track and cross country. The purpose of this organization is to bring together those interested in track and cross-country. Members may be chosen, not only from among letter men but also from among those whose main interest is track and cross country. This society fosters interclass and intramural track meets and furthers the aims of track and cross country by serving as officials for meets among undergraduates and High Schools.

HORTUS CLUB

Formed in order to supplement technical training as commercial florists and landscape artists, this Agricultural School club has speedily become an interest center for formal speaker's meetings and round table discussions. Trips to distributor's and grower's places of business make for valuable contacts.

DAIRY SCIENCE CLUB

The Dairy Science Club was organized by students in the Dairy Department of the Agricultural School who were primarily interested in milk and its allied technical phases. The motive of this organization is to integrate the activities of the dairy majors and to provide an extra-curricular means of approaching a better understanding of the dairy industry.

ALFRED ARCHERS CLUB

The purpose of the Alfred Archers Club is to promote student interest in this sport. The Club sponsors tournaments for beginners as well as for advanced archers. During the past year this Club has competed with other colleges in this splendid sport.

AIRO CLUB

The Airo Club was formed to coordinate the activities and interests of the air conditioning majors in the Agricultural School. Plans have been laid to visit many large industrial concerns during the year.

SERVICE CLUB

The purpose of this Agricultural School club is to promote a better understanding of the air conditioning, radio, and general electrical field, and to encourage closer coordination in the service group.

SHUTTLE AND LENS CLUB

The growing interest in photography has manifested itself by the organization of the "Shutter and Lens". Here, dormant interests are activated and requisite skills for the perfection of the art are acquired. The fully equipped dark room, including an en-

larger, has been made possible by the regular attendance and group sponsorship of meetings. Because of the keen interest in this activity, a series of exceptionally fine programs have been presented, being punctuated frequently with social affairs and picture hikes.

ELECTRICAL ASSOCIATION

This growing organization was formed three years ago by electrical students of the Agricultural School. This club is fulfilling a twofold purpose by being both an educational and social group. The program committee sees to it that there is a happy balance between social functions and technical discussions conducted by informed speakers.

HORN AND HOOF CLUB

The Horn and Hoof Club is the student organization for Animal Husbandry majors of the Agricultural School. Each year the club undertakes several projects, and last year the photographing of animals and construction of a board to measure calf growth was undertaken. Student reports on the newer phases in the animal husbandry field keep up with all new developments. In this manner the Club fulfills its motto, "More and Better Milk".

RADIO CLUB

To give students in the Radio Servicing course in the Technical Institute and all other interested students an opportunity to do experimental radio work was the reason for organizing this club. Many worthwhile projects have been undertaken by the club.

CLASS OFFICERS

Seniors

President—George Kellogg
Vice-president—Betty Stangl
Secretary—Sally Jane Morris
Treasurer—Richard Peck

Juniors

President—Margaret Aylor
Vice-president—Roger Marks
Secretary—Donald Wattles
Treasurer—Larry Bickford

Sophomores

President—S. Grant Merriman
Vice-president—John Baker
Secretary—Carolyn Casper
Treasurer—Marion Nadler

ALFRED UNIVERSITY FORUM

A series of cultural and entertaining programs is presented on the campus each year as the University Forum Program. All duly enrolled students in the College of Ceramics and the College of Liberal Arts may attend these splendid programs without cost.

The Forum Committee, annually appointed by President J. Nelson Norwood, is composed of both students and faculty. Prof. C. Duryea Smith III is Chairman.

1941-42 Forum Program

- Oct. 27—Presentation of "Twelfth Night" by the Chekhov Studio Players.
Dec. 8—Max Lerner, lecturer, author, former editor of "The Nation", now Professor of Government at Williams College.
Jan. 19—Paul Robeson, great negro singer.
Feb. 16—Maurice Hindus, world-famous authority on international affairs, radio commentator, linguist, author, lecturer.

STUDENT PUBLICATIONS

FIAT LUX

Editor-in-chief—Sophia Perry
Business Manager—Edwin Syzbillo
Managing Editor—Audrey Place

All freshmen, especially those who are interested in journalism as a profession, have an excellent opportunity for practical experience in newspaper work in *The Fiat Lux*, Alfred University's weekly student newspaper.

The Fiat, as it is referred to in campus jargon, has always maintained a high rating among the college and university publications of the Intercollegiate News Association of the Middle Atlantic States and is expected to reach even greater heights this year.

A six-week's trial period is conducted at the beginning of each year for candidates for reporters' positions on the staff. At the end of the six weeks the editorial staff votes upon the candidates who are recommended by the editors of each department. The same procedure is followed in electing business staff members. The opportunity for election and advancement to an editor's position is excellent for the reporter who is willing to work and who shows aptitude, ability, and interest.

THE KANAKADEA

Co-Editors-in-Chief—Sally Jane Morris,
Ailee Schryver
Business Manager—Harold Barr
Associate Editor—Clifford Reader

The Kanakadea is the Alfred University yearbook, and contains a record of the activities of all four classes during the college year at the end of which it is published. Editor and business manager of the *Kanakadea* are elected by the staff from

competing upperclassmen with previous experience on the book. Subordinate positions—class editors, literary assistants, and many others—are chosen by the editors from all four classes. Each Alfred student subscribes to the *Kanakadea* on matriculation.

THE ARGOSY

Co-Editors-in-chief—Norman Emdin
Maurice J. Smith
Business Manager—Lillian Hamlin

The Argosy is the yearbook of the Agricultural School and aims to present a graphic record of the students and activities of the Agricultural and Technical Institute. The staff is appointed each year on the basis of talents and willingness to serve.

MUSIC

THE MALE GLEE CLUB is a group of sixteen men, directed by Prof. Ray W. Wingate. The positions are competitive. Besides day trips to neighboring towns, the club makes an extended concert tour including New York City during spring recess.

THE WOMEN'S GLEE CLUB under the direction of Mrs. S. R. Scholes is also on a competitive basis. Short trips to near-by towns and several local concerts make up the year's work.

THE TECHNICAL INSTITUTE MALE GLEE CLUB, also directed by Mrs. S. R. Scholes, is a group made up of a score of the best male voices in that School. Several concerts, both in Alfred and out of town, are given annually.

THE WOMEN'S GLEE CLUB OF THE INSTITUTE makes several out-of-town appearances each season and does at various

times join with the Men's Glee Club in a mixed chorus for a number of engagements. This group is also directed by Mrs. Scholes.

UNIVERSITY BAND, directed by Olin Johnson, is open to all who play band instruments. Local concerts and short trips; besides the usual performances at pep rallies and football games, are included in plans for this year.

UNIVERSITY ORCHESTRA, directed by Ada Becker Seidlin, is also on a competitive basis with home recitals scheduled. Annual appearances in assembly, at Founder's Programs and at Commencement are also an important part of this group's work.

THE UNION UNIVERSITY CHOIR is directed by Mrs. Scholes. Try-outs are held at the beginning of the year for those who wish to join. Special Christmas music is the big feature in the choir program for each year.

SEVENTH DAY BAPTIST CHOIR, under the direction of Prof. Ray W. Wingate, furnishes music for the Sabbath Day Services.

ORGAN VESPERS

Ray Winthrop Wingate, Organist

Each Friday evening from seven-thirty to eight o'clock at the Village Church, October 29 to April 28.

DAVIS MEMORIAL CARILLON CONCERTS

Ray Winthrop Wingate, Carillonneur

Friday Concerts—7:30 to 8:15 P. M.

Sunday Concerts—3:00 to 4:00 P. M.
(This schedule is effective from April 28 until October 29. At other times the Friday concert is from 5:00 to 5:30 P. M.)

COLLEGE SONGS AND CHEERS

ALMA MATER

Nestled away 'mid the Empire State hills,
'Neath the watch-care of sentinel pines;
Where the murmuring song of the brook
hums along.

And a favoring sun ever shines;
In a valley so fair where the forest trees
share

Dominion o'er hillside and glen,
Stands the pioneer college of Western New
York—

Alfred, the mother of men.

—Chorus—

Hail to thee, Alfred, thou guide of our
youth.

Sweet, benign mother, all hail!
Sing out thy anthems of duty and truth;
May thy clear ringing music ne'er fail.

She was founded in toil, cemented with
blood,

And nurtured thro' yearnings and tears,
Her treasure the hearts of brave heroes
who stood

Undaunted throughout trying years:
Each stone was a prayer and her battle-
ments there

Have mem'ries of purposes strong,
Staunch daughters and sons are her mon-
uments fair.

And they lift up the grateful song.

—Chorus—

Others may boast of prestige and size,
Of numbers and treasure and fame
But Alfred's pride lies in manhood's clear
eyes,

And womanhood's high stainless name.
O Alfred, dear Alfred, thy fame will abide
With Kenyon and Allen and Main
With Davis the builder and Titsworth our
guide.

May Norwood her power maintain.

—Chorus—

OUR COLLEGE A. U.

Alfred's our college, hail Old A. U.

For the Varsity team give a cheer,
Each manly player so sturdy and true,

Fights on the team without fear,
Encourage each fellow to play a swift game,
And follow the hall best he can:
And when the foes of old Alfred draw nigh,
To fight for her prestige and fame.

—Chorus—

Come give a cheer for your College,

Root for old Alfred A. U.

Cheer her when she is victorious,
Ever be loyal and true.

Purple and Gold are her colors,

Loyal in spirit A. U.

Urge her men on to the victory,
To the praise and the fame of A. U.

Aye and forever, be loyal to her,

With the Varsity spirit let's sing.
Strong on the line up, and swift in the
backs,

Shout 'till the loud echoes ring—
With spirit and vigor for Alfred we'll cheer.
Your whole heart put into the game,
And when the foes of Old Alfred draw nigh
We'll fight for her prestige and fame.

—Chorus—

CHEER FOR ALFRED

We are out to cheer for Alfred,
We will help her win the day,
Make her gain athletic vict'ry.
By our shouts of ray! ray! ray!
Alfred, O!
Purple and the gold triumphant,
Waving 'neath a smiling sky,
Make us say we'll fight for Alfred
'Till the years have all rolled by.

SONG OF CITIES

Sing a song of cities, roll dem cotton bale,
Nigger ne'er so happy as when he's out of
jail.
Norfolk for its oysters, Boston for baked
beans,
Alfred for pretty girls, but for niggers
New Orleans.

—Chorus—

I've been working on the railroad, all the
live long day,
I've been working on the railroad just to
pass the time away,
Don't you hear the cap'n shouting; rise up
so early in the morn,
Don't you hear the darkies calling, Oh
Dinah, blow your horn?

Sing a song of colleges, tell you where to go,
Harvard for its knowledge, Cornell for a
row,
Princeton's wealth, or Amherst's pride, for
them naught do we care.
For old A. U. is strong and true, and for
her we'll do and dare.

—Chorus—

WE'RE PROUD INDEED

We're proud indeed of you football men,
Um, hum and a little bit more.
We cheer for you with all our might,
Um, hum and a little bit more.
Although we can't be very eloquent, we'll
tell you o'er and o'er,
We love you true, indeed we do.
Um, hum and a little bit
Hum, and a little bit
Um and a little bit more.

ON SAXON WARRIORS

On Saxon warriors,
The Purple and the Gold defend;
On Saxon warriors,
Ever on like men.
Crash thru the opponent's line
And victory will come our way
Fight, Fight for Alfred,
And she will win the day.

OH, HERE WE ARE

Oh, here we are! Oh, here we are!
You see us marching down the street.
You hear our cry: "To do or die.
We have the team that can't be beat.
We have!" (shouted)
So give a cheer, a hasty cheer,
And let the echoes carry true,
With a tramp, tramp, tramp,
And a stamp, stamp, stamp,
For the team of old A. U.!

SONG OF THE BELL

By the roaring, roaring banks
Of the old Kanakaden,
Oft I've lingered in the springtime long ago;
While the waters rushed along,
And the hills took up the song:
And a gentle voice was calling sweet and low.

—Chorus—

O, I hear the echoes ringing from the belfry
on the hill,
And the song inspires my heart to do and dare;
Calling me to love and duty, calling me
to faith and prayer,
For the bell is ringing, ringing, ringing still.

When the autumn days were on,
And a brilliant crimson show
Where the Alfred hill-side glory met the sky,
Voices whispered in the breeze
While I sat beneath the trees,
And communed with master minds of days gone by.

—Chorus—

O, the days of frost and snow;
O, the coasters' ruddy glow;
O, the evening's long delight with comrades dear,
When we talked on mighty themes,
Or indulged in happy dreams
Of our victories in the future hovering near.

—Chorus—

Now my hair is turning gray,
For those days have passed away
But their mem'ry lingers sweet and sweeter yet;
And my fireside's evening cheer
Seems to bring old Alfred near.
And the faces which my heart can ne'er forget.

—Chorus—

RAY RAY SONG

Way up in Allegany
'Neath the shade of sheltering pines,
There stands a little college
That's for training noble minds.
And when they get together
On the gridiron, field or track,
You hear the students give their yell
And bring the victory back.

—Chorus—

Oh! Ray! Ray! Ray! Ray! Ray!
Hear the students yell.
Ray! Ray! Ray! Ray! Ray!
Notes of victory tell.
Oh! Ray! Ray! Ray! Ray! Ray!
Better move along
When you hear the students
Sing their Ray Ray! song.

Oh here's the little college
That will help you do your best.
Her girls are true, her men are strong,
They always stand the test,
And when they get together
On the gridiron, field or track,
They put their shoulders to the wheel,
And bring the victory back.

—Chorus—

COLORS

Purple and Gold

YELLS

DOUBLE "A"

AL - - FRED AL - - FRED
A - - - L
F - - - R
E - - - D
AL - - FRED
TEAM! TEAM! TEAM!

VARSITY

V - A - R - S - I - T - Y
VAR - SI - TY VAR - SI - TY
A - L - F - R - E - D
AL - FRED
TEAM! TEAM! TEAM!

TRIPLE "A"

A - A - A
L - L - L
F - F - F
R - R - R
E - E - E
D - D - D
AL - FRED AL - FRED AL - FRED
TEAM! TEAM! TEAM!

LOCOMOTIVE

A - - L - - F - - R - - E - - D
A - L - F - R - E - D
A-L-F-R-E-D
ALFRED! ALFRED!
TEAM! TEAM! TEAM!

BEAT

Beat
Beat
Beat
Fight - Alfred - Fight
Fight - Alfred - Fight
Beat
Team! Team! Team!
TEAM YEA-TEAM
T-E-A-M Yea-Team
T-E-A-M Yea-Team
T-E-A-M Yea-Team

ECHO

A - - - - A
L - - - - L
F - - - - F
R - - - - R
E - - - - E
D - - - - D
ALFRED! ALFRED!
ALFRED!
TEAM! TEAM! TEAM!

FIGHT

AL - - - - FRED

FIGHT! FIGHT! FIGHT! FIGHT!
FIGHT!

AL - - - - FRED

FIGHT! FIGHT! FIGHT! FIGHT!
FIGHT!

ALFRED! ALFRED!

TEAM! TEAM! TEAM!

