



# *Fresh Bible*

**1959-1960**

Alfred University

**HAND**

Published by  
The Student Senate  
of Alfred University

**BOOK**

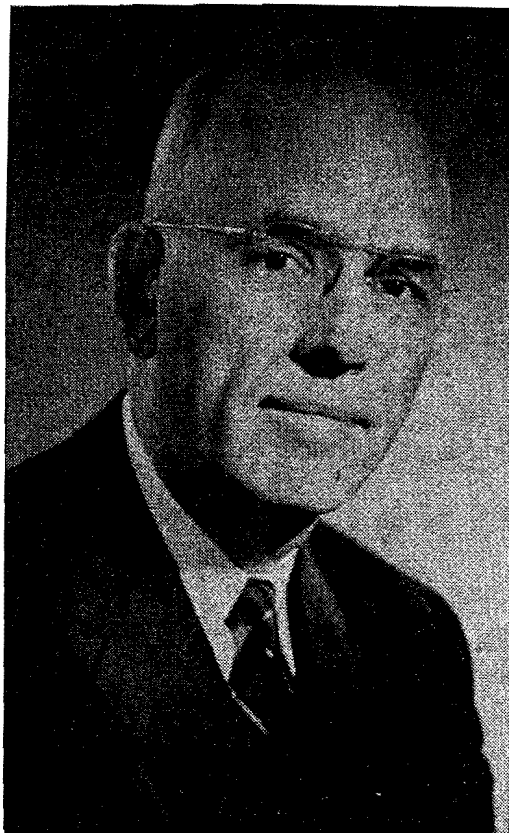
**1959-1960**

# Contents

1. From the President's Desk .....	7
2. College Calendar .....	8
3. Traditions .....	9
4. Songs and Yells .....	12
5. Student Government .....	15
a. Student Senate .....	15
b. NSA .....	15
c. Interfraternity Council .....	16
d. Intersorority Council .....	16
e. Women's Student Government .....	16
f. Student Union Board .....	17
g. St. Pat's Board .....	17
6. Activities .....	18
a. Publications .....	18
b. Athletics .....	19
c. The Forum .....	22
d. Musical Activities .....	22
e. Assemblies .....	23
f. Campus Caravan .....	23
g. Clubs .....	23
1. Departmental-centered .....	23
2. Interest-centered .....	24
h. Chapter Organizations & Honor Societies .....	27
i. Religious Life .....	31
7. Military Training (ROTC) .....	33
8. Regulations .....	34
a. Orientation Week .....	34
b. Frosh Court and Freshman Rules .....	34
c. WSG Letter .....	35
d. Social Code and WSG Regulations .....	35
e. Attendance Regulations .....	37
f. Parking Regulations .....	39
g. Student Marriages .....	39

h. Eligibility Regulations .....	39
i. Insurance .....	39
9. Facilities and Rules Regarding Their Use .....	40
10. Residences .....	44
11. Schools and Colleges .....	46
12. Administrative Offices and Buildings .....	47

## From the President's Desk



To the Class of 1963:

I consider it a real privilege to welcome you to Alfred University. We have been anticipating your arrival for many months, and we are happy to see you.

Alfred University is proud of its teaching staff and curricula. It provides many educational opportunities which will enrich your lives if you take advantage of them.

You will find that Alfred is a student-centered university. A well-developed plan of student government and student participation in university government and policy making are distinguishing features of life on the Alfred campus. Alfred is also known as a friendly university, and you will soon have many friends among your fellow students and teachers.

The true measure of a college or a university is the quality of its product. Alfred has an enviable reputation for the high quality of its academic programs and the success it has achieved in the preparation of its graduates for useful and happy lives. I know that you, like the many generations of students who have preceded you, have come to Alfred with high hopes. You may be sure that we of the faculties will do everything in our power to assist you in the realization of your dreams.

It is a real privilege for me to welcome you to Alfred University. We are delighted to see you. It is my hope and expectation that your Alfred years will be among the happiest and most fruitful of your lives.

M. ELLIS DRAKE  
President

## COLLEGE CALENDAR

For 1959--1960  
First Semester

Sept.	14-17	Registration
Sept.	18	Instruction begins
Sept.	21	Registration Part-Time Graduate Students, 5 to 8 p.m.
Oct.	15	Founders' Day
Nov.	16	Mid-Semester Grades
Nov.	25	Thanksgiving recess begins
Nov.	30	Instruction resumed
Dec.	16	Christmas recess begins

### 1960

Jan.	4	Instruction resumed
Jan.	20	Mid-Year Examinations begin
Jan.	29	Examinations end; Semester ends

### Second Semester

Feb.	2	Registration new students
Feb.	3	Instruction begins
Feb.	8	Registration Part-Time Graduate Students, 5 to 8 p.m.
Mar.	18	St. Pat's Festival, Half Holiday
Mar.	30	Mid-Semester Grades
Apr.	8	Spring recess begins (Easter, April 17)
Apr.	19	Instruction resumed
May	5	Moving-Up Day. No classes after 10 a.m.
May	25	Final Examinations begin
June	3	Examinations end; Semester ends
June	5	124th Anniversary Commencement

## *... traditions*

As much a part of Alfred as the coffee break and the noon mail are traditions such as —

### THE BELLS ...

Whenever an Alfredian thinks of his campus, one of his first recollections is usually that of the bells. The Carillon was brought to Alfred from Belgium in June, 1937, and at the present time the collection includes forty-three bells. Additional bells were added in the summer of 1953, and the steel tower erected. Carillonneur Dr. Ray W. Wingate gives Friday and Sunday afternoon concerts.

### AND THE COMMUNITY ...

Alfred prides itself on its friendly spirit. It has long been a custom to say "hello" to everyone, students or townspeople, whether or not you actually know them. This tradition does a great deal toward increasing friendliness among students and between students, townspeople and faculty members.

One situation which often confuses newcomers to Alfred is the fact that all stores are closed on Saturdays and open on Sundays. The reason for this is that many of the residents attend the Seventh Day Baptist Church. The bank is closed both Saturdays and Sundays. It is well to remember also that village stores are closed on Wednesday afternoon.

## Homecoming

(October 10)

Homecoming, the first big social event of the year is the time when many of the Alfred grads return for a "big weekend," including a football game, a buffet supper, fraternity and sorority open houses, and a general rehashing period of past escapades.

## Winter Carnival

(date to be announced)

Early in the second semester, the Student Senate sponsors, along with the Ag-Tech Student Council, a winter carnival weekend. This all-campus event includes open houses, competitive snow sculpture, Sno Ball, and winter sports events.

## St. Pat's Festival

(March 18 & 19)

Unique among campus events is the celebration of the birthday of St. Pat, the patron saint of ceramic engineers. The festival includes a jazz concert, a Ceramic College open house, ceramic exhibits, and a play presented by the Footlight Club. A ceramic senior is chosen by the St. Pat's Board, which sponsors the festivities, to represent St. Pat himself. The high point of the weekend is the crowning of the St. Pat's Queen at the all-campus Ball, which always features a name band.

## Moving Up Day

(May 5)

About three weeks before final exams is the day marking the moving-up of one class to the next and the honoring of the out-going senior class. A special student-faculty committee is already at work arranging the program which will include the annual assembly and step-singing contest plus the traditional dance, open houses, and push-ball contest.

## Parents Weekend

(May 7 & 8)

Parents Weekend, inaugurated in 1956, is planned to acquaint the parents with the various aspects of Alfred University. The activities of the weekend include a tour of the campus; dormitory, fraternity, and sorority open houses; and an intercollegiate athletic event.



## RAH — RAH LOCOMOTIVE

Rah, rah, rah, rah, Alfred, Alfred  
Rah, rah, rah, rah, Alfred, Alfred  
Rah, rah, rah, rah, Alfred, Alfred  
Fight, team, fight

## T — FIGHT

T - fight  
E - fight  
A - fight  
M - fight  
T - E - A - M FIGHT! TEAM! FIGHT!

## SAXON YELL

S - A - X - O - N - S  
S - A - X - O - N - S  
Saxons Fight!

## HALLELUJAH

Cheerleader: Hallelujah!  
Everybody : Hey!  
Cheerleader: Hallelujah!  
Everybody : Hey! Hey!  
Cheerleader: Hallelujah!  
Everybody : Hey! Hey! Hey!  
Fight, team, fight!

## THE ALFRED YELL

A-L-F-R-E-D  
A-L-F-R-E-D  
A-L-F-R-E-D  
Alfred! Alfred!  
FIGHT, TEAM, FIGHT!

## *... student government*

## Student Senate

President — Henry Nester

Alfred University students are governed by a campus body, the Student Senate, which is composed of representatives of all organized student groups. The Senate offers efficient service to the students whom it represents. Among the duties of the Senate are the running of annual campus elections, allocation of the campus budget, and promotion of good student-faculty relations.

## NSA

Coordinator — Robert Wiggins

The National Student Association is a confederation of over 300 student governments of colleges and universities throughout the United States. It is student run and through individual campus representatives, it gives student governments the opportunity to evaluate student problems. The NSA provides many services to the Alfred campus each year.



## Interfraternity Council

President — Kendal R. Burger

Coordinating fraternity rushing and activities is the function of the Interfraternity Council, made up of elected representatives of all the fraternities on campus. The Council is responsible for the pamphlets which the freshmen men will receive within the next few weeks regarding rules and regulations of rushing and introducing the Alfred fraternity system to the incoming student. The big social event of the year is the annual Interfraternity Ball held after tapping.

## Intersorority Council

President — Linda Rubin

The Intersorority Council is composed of members from each sorority. The aim of the council is to maintain high-plane sorority life and intersorority relations within the college, to further intellectual accomplishment and sound scholarship, and to compile rules governing rushing, pledging, initiation and standard on Alfred's campus.

## Women's Student Government

President — Marjorie Folwell

The Women's Student Government, known as W.S.G., regulates the general conduct and hours of the University women through a system of rules made by their elected representatives. The Senior Court has the power to counsel and to take any action deemed necessary on all violations of these rules made by the W.S.G. These rules may be found under student regulations in this book.

## Student Union Board

Co-Chairmen — Larry Wander, Brenda Johnson

The Alfred Student Union was established to provide a recreational, social and service center for the mutual enrichment of University students, faculty and staff members, all of whom are active members of the Union.

The cafeteria and dining room are controlled by the University. A nine member Student Union Board is responsible for social activities, maintenance and capital equipment in the lounge area. The following rules are to be observed by all using their Union:

1. No food or beverage is to be taken into the lounge area.
2. Ash trays are to be used.
3. Common sense is to be used in the treatment of the furniture.
4. Magazines are not to be taken from the lounge.
5. Organizations wishing to use the Union Meeting Room must schedule their meetings with the Union Board.
6. Union Board meetings are scheduled for Sunday at 4:00 p.m. The Board welcomes guests and suggestions.

## St. Pat's Board

Chairman—Douglas Klosen

The St. Pat's Festival is the result of many months of preparation by the members of the St. Pat's Board. These men, primarily juniors and seniors, are students in the College of Ceramics. The success of the weekend is the result of the Board's hard work and Professor Merritt's guidance and counsel.

## **Publications**

### **FIAT LUX**

Editor-in-Chief — Olyce Mitchell

All freshmen, especially those interested in journalism as a profession, have an excellent opportunity for practical experience in newspaper work on the FIAT LUX, Alfred University's weekly student newspaper.

The FIAT, as it is referred to in campus jargon, has always maintained a high rating among the college and university publications of the Intercollegiate Association.

Purpose of the FIAT as outlined in its constitution, is "to report accurately the news of students, faculty, and alumni, to comment editorially on all matters affecting college students, to seek constant improvement in the journalistic ability of the staff, to reflect trends in education and to present an accurate picture of Alfred University to the outsider."

### **KANAKADEA**

Editor-in-Chief — Donald Rice

The KANAKADEA, Alfred University's yearbook, presents a pictorial coverage of the events of the college year. Positions are available for freshmen to work as staff members in the various departments.

### **ALFRED REVIEW**

The ALFRED REVIEW represents the literary efforts of the creative members of the student and faculty body. Anyone interested in writing for the magazine may submit material to the editorial board, which is made up of both students and faculty. The REVIEW, a winner of the Pi Delta Epsilon national college competition, is published each spring.

## **Athletics**

### **MEN'S ATHLETICS**

Alfred University offers an opportunity for participation in the following intercollegiate sports: football, cross-country, basketball, wrestling, indoor track, tennis, golf, riflery, and outdoor track. Additional sports are offered on a club basis: fencing, badminton, archery and skiing.

### **MAGB**

All the intercollegiate athletic contests are supervised and approved by the Men's Athletic Governing Board, which also elects the managers and assistants in all sports.

Excerpts from the Athletic Governing Board Constitution covering eligibility of men students participating in intercollegiate athletics.

Section 7. Eligibility.

- (a) The faculty of Alfred University will determine the eligibility of students participating in intercollegiate sports.

- (b) In order to be eligible to play on intercollegiate athletic teams a student must be regularly enrolled in Alfred University and must take a minimum of twelve semester hours per week, doing full work in a regular course as defined in the curriculum.
- (c) No student transferring from another college or university shall participate in varsity intercollegiate contests until he shall have been in attendance for one full academic year.
- (d) No student shall participate in intercollegiate games for more than four years in the aggregate, and any member of the team who plays in any part of an intercollegiate contest does thereby participate in athletics for the year.

#### **General Regulations Covering Participation in Sports**

The coach of the sport shall have complete jurisdiction of the team in all matters of conduct.

The coach shall provide written excuses for all authorized absences due to participation in off-campus contests.

No body of students exceeding four in number (two in basketball) shall take part in contests taking place off-campus unless approved by the Athletic Governing Board.

Note: Permission may be granted in certain instances by the Director of Athletics providing a faculty representative is in charge of the group.

#### **Eastern College Athletic Conference Regulation**

Students will be declared ineligible if they participate in **ANY** outside athletic competition or activity without specific advance permission from the Director of Athletics. This includes all vacation periods including summer.

## **MEN'S INTRAMURAL BOARD**

The intramural program is governed by the Men's Intramural Board and all men students are invited to participate. Special announcements will be made at the beginning of each school year concerning intramural activities. Any group may enter teams in football, basketball, softball, tennis, volleyball, badminton, table tennis, golf, or horseshoes.

## **WOMEN'S SPORTS**

Women's sports include campus tournaments in archery, badminton, basketball, fencing, field hockey, riflery, softball, table tennis, tennis, and volleyball.

Each fall a sports day program with other near-by colleges is set up and freshmen are eligible to try out for the teams.

Points are given for participation and leadership in sports. The "A" is awarded for 35 points and the silver key for 65 points. Certificates are presented at the award session in May, indicating the number of points earned during the year.

## **W.A.G.B.**

The Women's Athletic Governing Board promotes and supervises all the women's sports. Its object is to stimulate skill, good sportsmanship, and high ideals in athletics. Each fall, two representatives from the Brick and one representative from each of the other residences are chosen to serve on the Board. These girls along with the officers of the previous year's Board, make up the new Board.

## Forum

Realizing the value to be derived from a well-balanced series of cultural and entertaining programs, Alfred University offers to all its regularly matriculated students, several Forum attractions each year.

The programs are planned by a student-faculty committee, headed by the chairman of the department of speech and dramatic production.

## Musical Activities

**MEN'S GLEE CLUB.** Interested students are invited to try out for the Glee Club. Campus performances, outside engagements, and a concert tour will be planned.

**UNIVERSITY CHORUS.** Open to students, faculty, and members of the community, the only requirement is an interest in music. The University Chorus will give a Pops Concert and formal programs, including The Messiah, during the year.

**CHAPEL CHOIR.** This group is open to men and women, by audition, and furnishes music for the University chapel services. A feature of the group is the concert tour. Last year's outside performances included concerts at Rochester and other cities.

**UNIVERSITY ORCHESTRA.** Students, faculty and members of the community who play any musical instrument, are invited to join the orchestra.

**UNIVERSITY BAND.** All students who play any band instrument are invited to join this group, whose primary function is playing at home football games.

Note: One hour of credit per semester is available on an optional basis, for each of the above musical activities.

## Assemblies

Thursday at 11 a.m. is the assembly hour, at which time programs of general interest are presented in Alumni Hall. Attendance of freshmen and sophomores is required.

## Campus Caravan

Originating directly from the Campus Union every Saturday morning, the Campus Caravan is a radio program produced entirely by students working in conjunction with WWHG in Hornell. The Caravan reviews the latest campus events, announces coming activities, features special guests and plays favorite records in an attempt to offer good listening to the students.

## Clubs

### DEPARTMENTAL

The various instructional departments of the University sponsor student organizations and clubs. Among these clubs are the following:

**ALFRED BUSINESS CLUB** . . . open to all sophomore, junior, and senior business and economic majors.

**CERCLE FRANCAIS** . . . open to all students interested in the French language and culture.

**EL CENTRO IBEROAMERICANO** . . . open to all students interested in the Spanish language and culture.

**POLITICAL SCIENCE CLUB** . . . open to all students interested in political science.

PSYCHOLOGY CLUB . . . open to all students interested in psychology.  
SOCIOLOGY CLUB . . . open to all students interested in sociology.  
SODALITAS LATINA . . . open to all students interested in the Latin language and the history and traditions of ancient Rome.

## INTEREST

### ALFRED BADMINTON CLUB

The purpose of this club is to sponsor and encourage the game of badminton in Alfred. Tournaments with other clubs in the area are sponsored by the ABC throughout the year. Membership is open to anyone in the university. Beginners are welcome. The club meets on Sunday afternoons from 3:00—5:00, from mid-October until spring vacation.

### ALFRED OUTING CLUB

Through the efforts of the AOC, the hills and trails about Alfred annually afford ample opportunity for students to enjoy outdoor life and sports. This year, the students may participate in hikes, barbecues, dances, picnics, skating, and skiing. The club is a member of the Intercollegiate Outing Club Association.

### AUF AA

The Alfred University Fine Arts Association was organized to stimulate a professional attitude on the part of students through exhibitions of students' work, guest speakers and exchange programs with other universities; to acquaint members with trends and directions in the fine arts; and to promote an interest and understanding on the part of the university and the community in art.

## CHEER LEADERS

The Cheer Leaders are a campus organization with their own constitution and award system. This group leads the cheering for both football and basketball. Annual tryouts for women cheerleaders are held between the football and basketball seasons, while the tryouts for men are held prior to the opening of the football season.

## EYES RIGHT CLUB

The Eyes Right Club, the ROTC social organization, sponsors the Military Ball, the Military Banquet and the annual picnic. In the past, it also sponsored a three-day visit to the United States Military Academy at West Point, New York, for two cadets in the advanced ROTC Corps. Membership is open to all Alfred University cadets.

## FOOTLIGHT CLUB

The Footlight Club is an organization designed to promote the best in dramatic production. Its members are chosen from those showing the most ability for dramatics or stage production. The club last year included in its program two regular and one arena staged play, plus an assembly presentation.

## INTERNATIONAL CLUB

The International Club was organized to foster international relations, to create an understanding of various national groups, and to acquaint socially the foreign students on campus with one another and with other students and faculty members. The club is open to all students and faculty.

## VARSITY "A" CLUB

The Varsity "A" Club was formed in the interest of bigger and better athletics and the promotion of

true fellowship among athletes. The club is composed of those athletes who have been duly voted a certificate for varsity athletics and are furthermore awarded the Varsity "A" sweaters for this achievement. The most important purpose of the club is to promote athletics in Alfred, and create principles of true sportsmanship. An award is also given to the outstanding senior athlete of the year.

## Chapter Organizations

### AMERICAN CERAMIC SOCIETY

The Alfred branch of the American Ceramic Society, a professional organization of ceramic engineers, ceramic technologists and glass technologists, strives to promote interest and a better understanding of ceramics and associated industries. The programs of the society are designed to supplement the academic curriculum.

### AMERICAN CHEMICAL SOCIETY

The Student Affiliates of the American Chemical Society (formed in 1957) is a group of students interested in the various aspects of chemistry. The group presents films and lectures that help bring better appreciation of the many frontiers a chemist can explore.

### STUDENT NURSES ASSOCIATION

All students of nursing are members of the Student Nurses Association. This organization has two major objectives:

1. To promote the interests of student nurses both on and off campus, and to achieve a unity of all students of nursing throughout their total university experience.
2. To enroll all Alfred University students of nursing in the Student Organization on the national, state and area levels, so that they may plan an active role in this professional organization.

## Honorary Societies

### ALPHA LAMBDA DELTA — 1954

The purpose of Alpha Lambda Delta, a national honor sorority, is to promote intelligent living and

a high standard of learning and to encourage superior scholastic attainment among the freshmen women. Its present members from all four classes are pledged to service and are called upon in that capacity by the administration, by the faculty and by the student body.

#### ALPHA PHI OMEGA — 1946

Alpha Phi Omega is a national service fraternity, composed chiefly of ex-scouts. Because it is a service fraternity, its constitution has no racial or religious discrimination clauses. Its main objective is the development of the qualities of leadership, friendship and service in its members through service to campus, community and the scouting movement.

#### ALPHA TAU THETA — 1930

This is an honorary athletic fraternity for women at Alfred. It aims to develop loyalty to the ideals of true sportsmanship and to recognize worthwhile achievements in sports.

#### BLUE KEY — 1936

The Blue Key is a national honorary fraternity composed of upperclassmen, recognized for their character, scholarship, student activities, leadership and spirit of service on the campus. As a service organization, the Blue Key welcomes visiting groups to the campus and sponsors Frosh Court, Campus Cleanup, and the annual talent show.

#### CWENS — 1959

The National Society of Cwens is an honorary society for Sophomore women. Freshman women are

tapped at the end of their first year. These women must have a 2.0 index and must have been leaders in their freshman year. Those chosen are initiated at a special Cwens ritual and banquet.

The organization does the following:

1. Assists in orientation of freshman women throughout the year.
2. Serves as hostess for various campus affairs.
3. Serves as ushers for special occasions.
4. Gives teas for "B" average freshman women.
5. Gives an award to an outstanding freshman woman who needs financial help.
6. Recognizes hall in freshman dorm with highest average.
7. Cooperates, when desired, with other organizations in common project.

#### ETA MU ALPHA — 1924

Founded in 1924, by members of the junior class, Eta Mu Alpha is the scholastic honor society of the College of Liberal Arts. Elections are held in October and March of each year, and prospective members are elected by faculty members belonging to Phi Beta Kappa and Eta Mu Alpha. To be eligible, students must be in the upper tenth of their graduating class. One or more outstanding students are elected in March of the junior year.

#### GOLD KEY

The Gold Key is an honorary society for Senior women. The women are tapped at the end of their Junior year after a unanimous vote by the members. The organization recognizes these women by evidence of their extra-curricular activities and their academic achievements, which have aided in the

development of Alfred University. The society sponsors two activities a year. During the first semester it brings to campus an outstanding professional woman. The second semester it pays tribute to an outstanding woman in the field of arts and letters.

#### KERAMOS — 1932

Keramos is the national professional engineering fraternity. Its membership is composed of students from ceramic colleges throughout the country and men particularly prominent in the field of ceramics. The principle object of the fraternity is to promote and emphasize scholarship and character in ceramic students, to stimulate mental achievement and to promote interest in ceramic engineering. Membership is based on scholastic record and interest in ceramics.

#### PI DELTA EPSILON — 1943

The national honorary journalism fraternity is composed of a group of students who, by their constant endeavor to raise the level of the collegiate publications on campus, have shown their interest in an improved type of journalism. Members are selected after having served two years on some campus publication, showing outstanding ability during that period, generally in an editorial position.

#### PI GAMMA MU — 1927

This national honorary social science fraternity was brought to the campus in 1927 to awaken interest and encourage underclass study in the field of social science. Membership includes a limited number of the faculty and upperclass members who must have an average index of 2.0 and 20 hours of study in the social sciences.

## Religious Life

All student religious activity at Alfred is voluntary. This does not mean that the University administration is indifferent toward religion. The Alfred University Chaplain serves as director of religious activities. Alfred's united religious program, in which all denominations cooperate, has been so successful that other colleges have studied or copied the Alfred plan.

The aim is two-fold: 1. to provide regular worship services of quality such as will awaken and expand the student's awareness; 2. to establish religious organizations which give students experience and purpose in controlling religious groups.

#### REGULAR WORSHIP SERVICES

University Chapel Service: Tuesday, 11:00, Alumni Hall. There is a mixed choir especially for this service.

The Union Church: 9:30 a.m. and 11:00 a.m., Sunday in the Seventh Day Baptist Church, is an interdenominational christian service. There is a vested choir. The Reverend James M. Dick is minister.

Catholic Mass, Alumni Hall, Sunday morning at 9:00 and 10:30 a.m. Weekdays at 7:15 a.m. The first Friday of every month there is Mass at 7:00 a.m. Every Monday thru Friday there is Rosary at 7:00 p.m. The Very Reverend Monsignor John J. Neylon, chaplain.

Episcopal Service, the Gothic Chapel, Sayles Street. Each Sunday, 8:00 a.m., Holy Communion. First and third Sundays at 11:00 a.m., Holy Communion and sermon.



Second and fourth Sundays at 11:00 a.m., Morning Prayer and sermon. Fifth Sunday, Litany. Every Wednesday at 5:00 p.m., there is Communion. The Reverend Robert H. Bone, chaplain.

Jewish Service — The Gothic Chapel.

Friday, 7:15 p.m. Dr. Melvin Bernstein, Advisor.

Seventh Day Baptist Service, Saturday morning at 11:00 a.m., in the Seventh Day Baptist Church. The Reverend Hurley S. Warren is minister.

Friends Meeting, School of Theology, 58 South Main Street, Sunday morning at 11:00 a.m.

#### MEETINGS

Newman Club, every second Thursday evening, at 7:30 p.m. Dr. Manolo Rodriguez-Diaz, advisor.

Hillel, Saturday, 1:30 p.m., Howell Hall. Dr. Melvin Bernstein, advisor.

Canterbury Club, Sunday evenings, the Gothic Chapel.

AUCA, Sunday evenings, Howell Hall. Open to all, the Alfred Student Christian Association tries through active group participation to create a strong feeling of Christian fellowship among students on campus. The Alfred University Chaplain is the advisor.

Methodist Student Fellowship, bi-monthly meetings on Sunday evenings, 8 p.m.

Lutheran Club, to be announced.

Midweek Christian Fellowship, to be announced.

### *... military training*

#### RESERVE OFFICERS' TRAINING CORPS

The ROTC unit at Alfred University provides a general military curriculum. This means that the ROTC cadet will be given general army training without reference to any one arm or technical service.

For those cadets who so elect and are chosen to pursue the advanced course (third and fourth academic years), a choice of branch will be made prior to commissioning based upon the needs of the service and the individual's desires and capabilities.

Basic course (first and second academic years) will be presented in three class-hours per week, while advanced course cadets will receive five hours instruction per week.

Credits count toward graduation as in any other course. Draft deferments will be authorized to those who qualify.

Full details will be available at registration. The program is compulsory for entering students, provided they are physically able to qualify.

## *... regulations*

### ORIENTATION WEEK

Orientation Week is planned to acquaint the new students with Alfred, its activities, traditions and school life. During this time, freshmen meet the personnel deans, the academic deans and campus leaders who do their best to answer questions and make the freshmen feel at home. Included on the program are meetings, teas, movies, tours of the campus and get-acquainted dances. In addition, tests will be given and finally, there will be registration for the first year at Alfred.

### FROSH COURT

Frosh Court is administered by the senior members of Blue Key and representatives of the WSG. As often as is necessary the "justices" hold court in Alumni Hall. Violators of the freshmen rules are given a chance to plead their cases and then are freed or sentenced. "Ignorance of the law is no excuse."

### FRESHMAN RULES—1959-1960

1. All freshman men and women are required to wear the regulation freshman cap without alteration from 6 a.m. to 6 p.m., Monday through Friday and at all home athletic events from Orientation Week to Homecoming.

2. Freshmen are required to carry their handbook at all times and be able to answer any question on rules and regulations presented to them by upperclassmen.

3. Freshmen shall greet all faculty members, campus guests and students with the customary "hello" or similar greeting.

4. Freshmen shall learn the Alma Mater and all freshman rules.

5. Violation of the above rules shall be handled by the Frosh Court and the Women's Student Government.

## WOMEN'S STUDENT GOVERNMENT

To the Women of the Class of '63:

The Women's Student Government takes great pleasure in welcoming you to your first year on Alfred's campus.

Your success and happiness at Alfred will depend upon your friendly attitude and willingness to take part in not only your orientation but also in the many activities here on campus.

The W.S.G. has published a handbook which contains all the rules and regulations you will be expected to observe during your stay at Alfred. This book is intended to answer any questions you may have concerning rules, student life, and social behavior at the University.

If you have any questions left unanswered by the handbook, remember the W.S.G. represents you and any member of the council will be more than willing to assist you.

Sincerely,  
Marjorie Folwell  
President, 1959—60

### SOCIAL CODE OF ALFRED UNIVERSITY

It is expected that men and women of Alfred University will conduct themselves at all times in a manner that will not bring discredit upon themselves or the University according to the best traditions of moral and social behavior.

### WOMEN'S STUDENT GOVERNMENT RULES AND REGULATIONS

All freshman women and transfers are REQUIRED to read the freshman handbook published by the WSG. The men are encouraged to read this

book also, but for their enlightenment we quote the rules and hours which women are expected to observe.

### Closing Hours

#### Freshman Women — First Semester

Sunday thru Thursday—10 p.m.

Friday and Saturday—1 a.m.

#### Second Semester

Sunday thru Thursday—11 p.m.

Friday and Saturday—1 a.m.

#### Sophomores and Juniors

#### First and Second Semester

Sunday thru Thursday—11 p.m.

Friday and Saturday—1 a.m.

#### Seniors

#### First and Second Semester

Monday, Tuesday and Thursday—11 p.m.

Sunday and Wednesday—12 midnight

Friday and Saturday—1 a.m.

Freshman women shall be subject to the freshman rules prescribed by the Student Senate.

### ATTENDANCE REGULATIONS.

The faculty believes that attendance regulations should instill the qualities of courtesy, consideration and self reliance and have, therefore, adopted the following regulations.

1. Inasmuch as a student is responsible for all work covered in a course, it is essential for him to attend class regularly. Instructors check this attendance and report to the personnel deans whenever an undergraduate student is absent from the course three or more times. Excuses or notes concerning an absence never exempt a student from the work included in a course; however, the cause for an absence may properly influence an instructor in considering what aid to extend in preparing make-up assignments, examinations, etc.

Any faculty member or department can apply additional regulations for attendance in a course. This is done regularly for the courses in Military Science and Tactics, for Physical Education 1, 2, 3, and 4, and for Assembly in which attendance is handled in the manner of a regular course.

2. Two unexcused absences from assembly per semester are allowed. All excuses are submitted to the Dean of Men.

3. The department of physical education has special regulations governing required attendance and excuses for men and women.

4. If a student is absent from an announced one-hour quiz or a final examination and has not been excused because of official University business or illness, it shall be the decision of the Academic Dean and the instructor whether or not the missed quiz or final examination may be made up. The instructor should announce the time and place of finals to his classes to avoid the occasional absence from a final examination resulting from a misunderstanding or misreading of the printed schedule.

## 5. Attendance at ROTC Classes:

### a. General

University regulations applying to all class attendance apply also to ROTC classes. However, since much ROTC instruction is designed to teach a student facts or procedures he will require later at summer camp or on active duty, it is the student's responsibility to make up all ROTC classwork. Also, since ROTC cadets are constantly under observation and are being graded for leadership potential in addition to academic achievement, it behooves each cadet to be punctual and uniform in attendance and performance in class as well as in other military work.

### b. Absence from Class

(1) ROTC cadets who miss instruction or examinations because of absence from class will receive a zero grade until the work is made up.

(2) Advanced Course cadets will receive a deduction of two days' commutation of subsistence for each unauthorized class absence.

(3) Excuses will be presented to the instructor concerned who may or may not accept the excuse. All absences for which excuses are accepted must be made up by work outside the classroom at the discretion of the instructor.

(4) A cadet obtaining a medical excuse that states "Excused from marching," will attend drill periods, but will not be required to march.

(5) All absences will be recorded in grade record book by instructor concerned. An instructor may place any cadet on probation for excessive absences or failure to demonstrate suitable academic proficiency at any time during a semester.

(6) Any cadet whose attendance record shows over 3 absences for any cause may be called to appear before a Board of Officers who will examine the record to determine the validity of excuses and

to determine if the absences will affect the cadet's ability to successfully complete the semester with a passing grade.

## PARKING REGULATIONS

Resident freshmen are not permitted to have cars on campus or in the village of Alfred. Campus traffic and parking regulations have already been distributed.

## STUDENT MARRIAGES

Students who plan to be married are expected to observe the following regulations:

1. The personnel deans must be notified of marriage plans in advance;
2. The parents of both students must also be notified;
3. If college work is continued after marriage, and both students continue to live in Alfred, the couple must live together.

## ELIGIBILITY RULINGS

A student "on condition" may not be permitted (1) to participate in any extra curricular activities (athletics, dramatics, music, etc.) or (2) to carry a full curricular load, or (3) to engage in any extra social activities, or (4) to engage in any combination of (1), (2) or (3). Whatever the nature of the "the condition," its main objective is to assist the student in gaining or regaining the requisite academic standing in the shortest possible time and in a way that will do the student the most all-round good.

## INSURANCE

Alfred University does not carry insurance protecting the personal effects of dormitory residents against fire and similar hazards. Students are urged to consult with their parents to make certain that there is proper coverage.

## *... facilities*

### HERRICK MEMORIAL LIBRARY

The Herrick Memorial Library, located on the corner of University and Park Streets, was erected in 1956-57 by a bequest from the late Margaret Brown Herrick, as a memorial to her husband, John P. Herrick. The regulations are:

1. Library hours — The library is open for regular work from 8:00 a.m. to 10:50 p.m. each day from Monday through Thursday. On Fridays the library is open from 8 a.m. to 9 p.m. On Saturdays, the library is open from 1:00 to 4:00 p.m., and on Sundays, from 3:00 to 5:00 p.m., and from 7:00 to 10:50 p.m.

#### 2. Loan of books—

(1) Most books may be withdrawn for a period of two weeks, with the privilege of renewal. Recent popular books may be withdrawn for but one week without the privilege of renewal. Reference books, such as dictionaries, encyclopedias and periodicals, bound and unbound, may not be withdrawn at any time.

(2) An overdue charge of five cents a day, holidays excluded, is made on all books overdue.

(3) Students whose accounts are in arrears must settle the same before receiving credits at the end of each semester.

(4) All books must be signed for at the delivery desk before being removed from the building. Wait for the librarian to check and stamp each book.

#### 3. Reserved books—

(1) Reserved books may be obtained by calling at the delivery desk. Such books should be re-

turned to the desk as soon as you are finished with them, as others may be waiting for them.

(2) Reserved books may be withdrawn from the library a half hour before closing time each night, and must be returned to the library by 9:00 the following morning, except that books withdrawn on Friday night must be returned by 1:00 Saturday, and books withdrawn on Saturday afternoon must be returned at 3:00 Sunday.

(3) An overdue charge of 25c for the first hour and 10c for each additional hour or fraction thereof is made on all reserved books overdue.

4. Overdues — Overdue charges are payable at time of returning books. If not paid at this time, a carrying charge of 25c is added to the amount.

### THE PRINT COLLECTION

A collection of prints of well known works of art is available to students and faculty members for rental each academic year. Prices are \$2.00 to \$4.00. These prints may also be purchased through the office of the Dean of Women.

### CERAMICS COLLEGE LIBRARY

The library of the New York State College of Ceramics, located on State Street on the second floor of Binns-Merrill Hall, is a reference library. No books may be withdrawn on loan. Over 13,000 books are available. Although the books are of interest chiefly to the students and staff members of the Ceramic College, anyone on the college campus is welcome to use the library facilities during the hours following: 8:30 a.m. to 5:00 p.m., Monday through Friday and from 7:00 to 10:00 p.m., weekday nights; 2:00 to 4:00 p.m. Saturday and Sunday and 7:00 to 10:00 p.m., Sunday.

The librarian is R. R. B. Murray.

## HEALTH CENTER

The Clawson Health Center, located on Park Street, south of Kruson Hall, provides facilities for the treatment of student illness. The staff consists of the University physician, who is assisted by registered nurses. It is equipped for minor X-ray examinations, infra-red and short wave therapy and ordinary clinical laboratory examinations. The regulations of the infirmary are:

1. It is the responsibility of the student to report immediately, night or day, to the infirmary in the event of illness.

2. Except for emergencies, the doctor will be at the infirmary from 3:30 p.m. to 5:30 p.m., Monday through Friday.

3. Student fees provide for a maximum of 14 days of infirmary care per year. Beyond this number of days, a charge of \$4 a day is made.

4. The infirmary is prepared to provide the following services:

- a. Ordinary nursing care.
- b. Certain common drugs and medicines.
- c. Treatment for minor ailments and injuries.
- d. Ordinary clinical laboratory examinations.
- e. Minor X-ray examinations.
- f. Infra-red and short-wave therapy.
- g. Treatment of chronic illnesses within the limits of facilities. The University, however, can assume no responsibility for illnesses which existed prior to admissions.

5. Any medical, hospital or surgical service which the infirmary is not equipped to provide must be paid for by the student. When a student is transported to a hospital, he becomes a private patient with a freedom of choice concerning a physician and

must assume liability for all debts. House calls are chargeable to the student.

6. If a student wishes to be treated by a physician of his own choice, he must:

- a. Assume responsibility for payment of all medical bills.
- b. Inform the physician that he is an Alfred student.
- c. Inform the infirmary of his action.
- d. Request the attending physician to notify the infirmary. The attending physician may not admit or treat students in the infirmary.

7. Absence from class because of illness may be excused by the doctor directly or by the doctor through the agency of a housemother or other authorized person.

8. All permanent and temporary excuses from physical education will be issued at the infirmary and must be filed at the Registrar's office.

9. Students' visiting hours at the infirmary are from 1 to 3 p.m. and 7 to 8 p.m.

10. After being admitted to the infirmary, students are not allowed visitors for the first 24 hours without special permission.

11. No student suffering from an infectious ailment will be allowed visitors until he is past the stage of transmission.

12. In the event of an emergency, the infirmary must be notified and instructions obtained. Do not call the doctor.

## FINANCIAL ASSISTANCE AND SCHOLARSHIPS

University students desiring financial assistance or scholarships should see the chairman of the Committee on Student Financial Assistance, whose office is in Greene Hall.

Part-time employment is available to students in the University.

## COUNSELING

Every student has a faculty advisor from whom he receives his mid-semester's grades and with whom he meets during the school year in conference. Academic, social, financial and other personal problems are discussed individually, and solutions are sought, if necessary, with the help of interested faculty members. In addition, the personnel deans, the academic deans, the counselor and the Director of the Religious Program are available as skilled counselors as are the members of the psychology department.

## Residences

### FOR WOMEN

**THE BRICK** — Located on University Street; for all University freshman women.  
Head Resident—Mrs. Adele Schultz

**KRUSON HALL** — Located on Park Street next to the Brick; for University freshman women and upperclass women.  
Head Resident—Mrs. Eva M. Black

**THE CASTLE** — Located on Reynolds Street.  
Head Resident—Mrs. Edith Holmes

### SORORITIES:

**ALPHA KAPPA OMICRON** — South Main Street  
President—Karol Edwards  
Head Resident — Mrs. Florence Robinson

**PI ALPHA PI** — Sayles Street  
President—Grace Vaccaro  
Head Resident — Mrs. Helena Kage

**SIGMA CHI NU** — Sayles Street  
President—Linda Rubin  
Head Resident—Mrs. Margaretta Almy  
**THETA THETA CHI** — Sayles Street  
President—Brenda Johnson  
Head Resident—Mrs. Florence Kelley

### FOR MEN

**BARTLETT DORMITORY**—Located on State Street  
Head Resident—Mrs. Elizabeth Houghton

**BARRESI DORMITORY**—Located on State Street  
Head Resident—Mr. Norman Severin

**CANNON DORMITORY**—Located on State Street  
Head Resident—Mr. Robert Hildebrandt

**RODIES DORMITORY**—Located in Saxon Heights

### FRATERNITIES:

**DELTA SIGMA PHI** — North Main Street  
President—William Sturm  
Head Resident—Mrs. Margaret Corbin

**KAPPA NU** — Elm Street  
President—Jimmie Fassler  
Head Resident — Mrs. Lydia Orcutt

**KAPPA PSI UPSILON** — Hillcrest Drive  
President—George Neudeck  
Head Resident—Mrs. Sybil Gray

**KLAN ALPINE** — South Main Street  
President—Norman Browner  
Head Resident—to be appointed

**LAMBDA CHI ALPHA** — State Street  
President—Ronald Theis  
Head Resident—Mrs. Martha Fissell

**TAU DELTA PHI** — Church Street  
President—Paul Cohen  
Head Resident—Mrs. Elizabeth Mapes

## SCHOOLS AND COLLEGES

Alfred University had its beginnings in a select school which opened in the village of Alfred on December 5, 1836. This school was chartered in 1843 as "Alfred Academy" and in 1857 the New York State legislature passed an act creating Alfred University. Courses in liberal arts and theology were instituted from which have evolved the present College of Liberal Arts and the School of Theology.

In 1900 the State of New York established a school affiliated with the University. The school became in 1932 the College of Ceramics. This college is a unit of the State University of New York but is administered by the Alfred University Board of Trustees and is an integral part of Alfred University.

In 1953 the School of Nursing was established. This school grew out of a Cadet Nursing Program which began on campus in 1943.

In 1947 a Graduate School was organized which coordinates all instruction in the University on the graduate level.

## Administrative Offices

President, M. E. Drake; office located in Carnegie.  
Treasurer-Business Manager, E. K. Lebohner; office located in Carnegie.

Registrar, Fred H. Gertz; office located in Kana-kadea Hall.

Dean, College of Ceramics, J. F. McMahon; office located in Binns-Merrill Hall.

Dean, College of Liberal Arts; office located in Physics Hall.

Dean, School of Nursing, I. Vernetta Grau; office located in Myers Hall.

Dean, School of Theology, Albert N. Rogers; office located at 58 South Main Street.

Dean, Graduate School, J. Seidlin; office located in South Hall.

Dean of Men, Paul Powers; office located in Greene Hall.

Dean of Women, Barbara Bechtell; office located in Greene Hall.

Director of Religious Program; office located in Myers Hall.

Director of Admissions: Philip Hedstrom; office located in Greene Hall.

Counselor, William S. Anderson; office located in South Hall.



# Buildings

**ALLEN LAB:** Home of biology department on the east side of State Street.

**ALUMNI HALL:** English taught downstairs; movies and assemblies in the hall upstairs; off University Street.

**BINNS-MERRILL HALL:** Home of ceramic engineering and design located on State Street.

**CAMPUS CENTER:** Home of student activities, publications, student government, and cafeteria.

**CARNEGIE:** President and Treasurer.

**GREENE HALL:** Home of speech and drama, as well as some administrative offices upstairs. including the personnel deans; on Main Street next to Carnegie.

**HERRICK MEMORIAL LIBRARY:** Corner University and Park.

**KANAKADEA HALL:** Social sciences taught upstairs; registrar's office downstairs; first building on west side of State Street.

**MEN'S GYM:** Located on Pine Street.

**MYERS HALL:** Home of philosophy, languages, nursing, chemistry, geology, Director of Religious Program; located on State Street.

**PHYSICS HALL:** Next to Kanakadea Hall on State Street; instruction in physics and mathematics.

**SOUTH HALL:** Women's gym downstairs; courses in business and secretarial studies, sociology, psychology and education.

**SUSAN HOWELL SOCIAL HALL:** At the top of University; also home of music department.